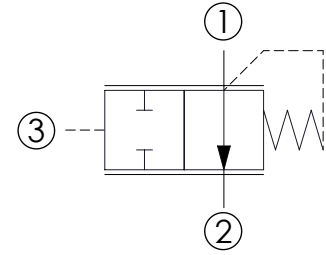
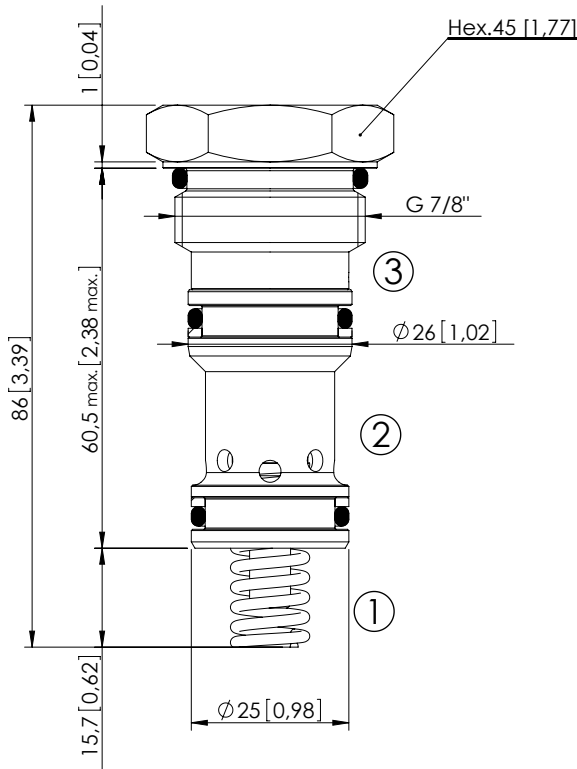


CDLN-100-SBPE

NORMALLY OPEN
SPOOL TYPE



SPECIFICATIONS

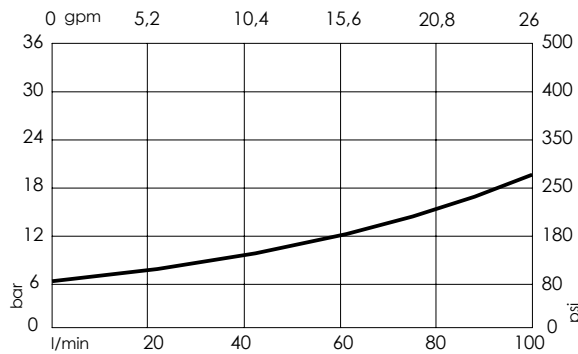
Max. operating pressure:	350 bar (5000 psi)
Rated flow:	100 l/min (26 gpm)
Cavity:	VP000555
Weight:	0,27 kg (0,6 lbs)
Spool:	$\varnothing 16$ mm [0,63]
Installation torque:	135 - 145 Nm (100 - 107 ft-lb)
Seal kit:	RC700330
Contamination class to ISO 4406:	See technical spec.
MTTF _a :	150 years

Dimensions: mm [inches]

NOTES

Parts in body compensator

CURVES



ORDERING CODES

Quick code	Description	Closing pressure
CD000115	CDLN-100-SBPE-01-555-N005	5 bar (75 psi)