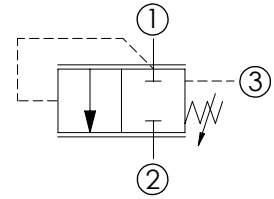
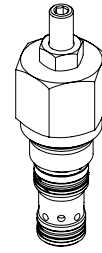
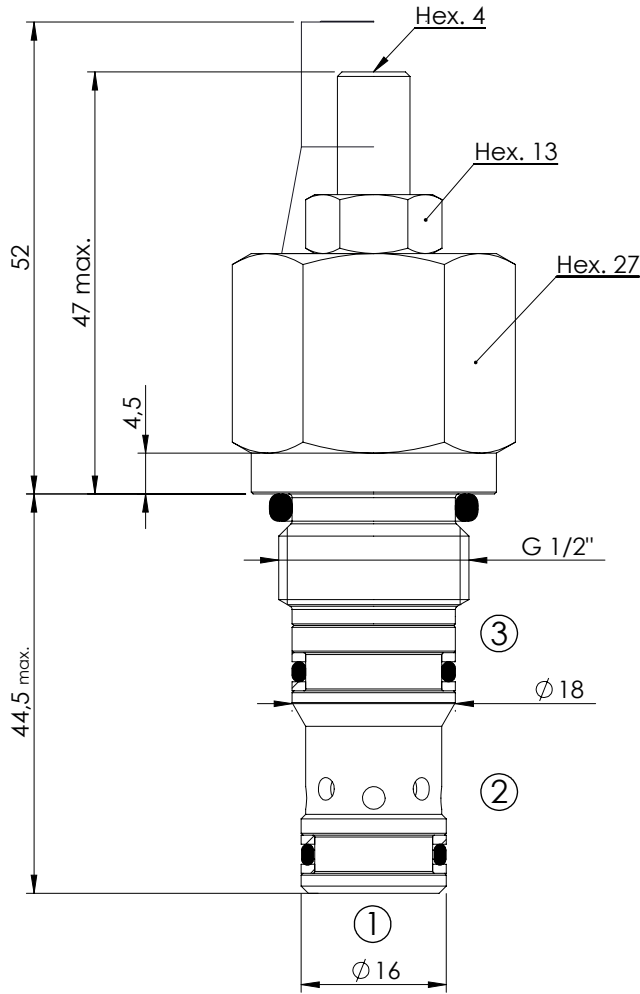


LOGIC ELEMENT

CDLN-100-SCPC

**NORMALLY CLOSED
SPOOL TYPE
ADJUSTABLE SETTING**

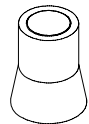


SPECIFICATIONS

Max. operating pressure:	350 bar
Rated flow:	100 l/min
Cavity:	VP000198
Weight:	0,2 kg
Spool:	$\phi 10$ mm

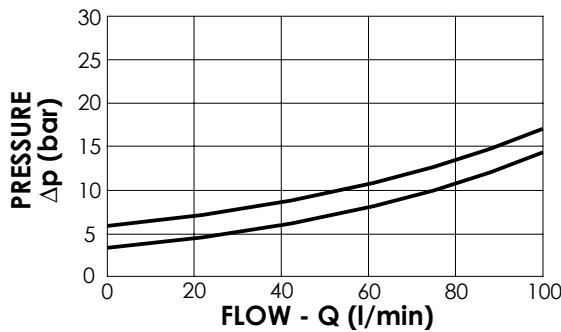
SEALING CAP

Ordering code:
AT000020



NOTES

Installation torque:	75 - 85 Nm
Seal kit:	RD700198
Parts in body compensator	



ORDERING CODES

Quick code	Description	Setting range (bar)	
CD000358	CDLN-100-SCPC-01-198-H020	10 - 20	