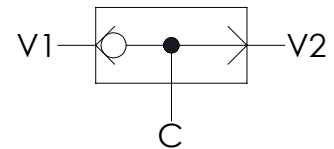
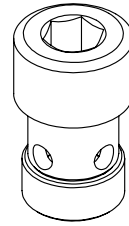
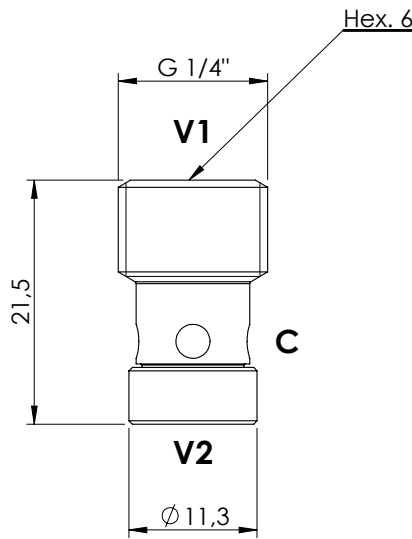


SHUTTLE VALVE

CDSN-030-SSNS

INSERT TYPE

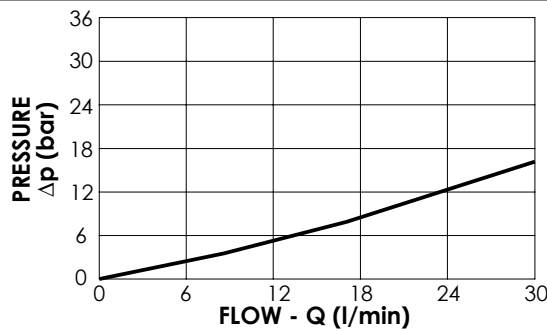


SPECIFICATIONS

Max. operating pressure:	350 bar
Rated flow:	30 l/min
Cavity:	VP000079
Weight:	0,01 kg

NOTES

Installation torque:	14 - 16 Nm
----------------------	------------



ORDERING CODES

Quick code	Description
CD000045	CDSN-030-SSNS-FN-079-N000