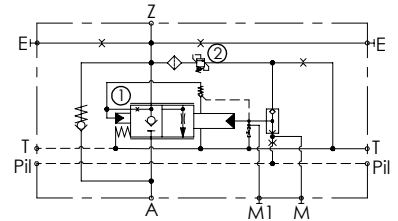
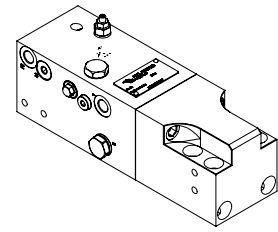
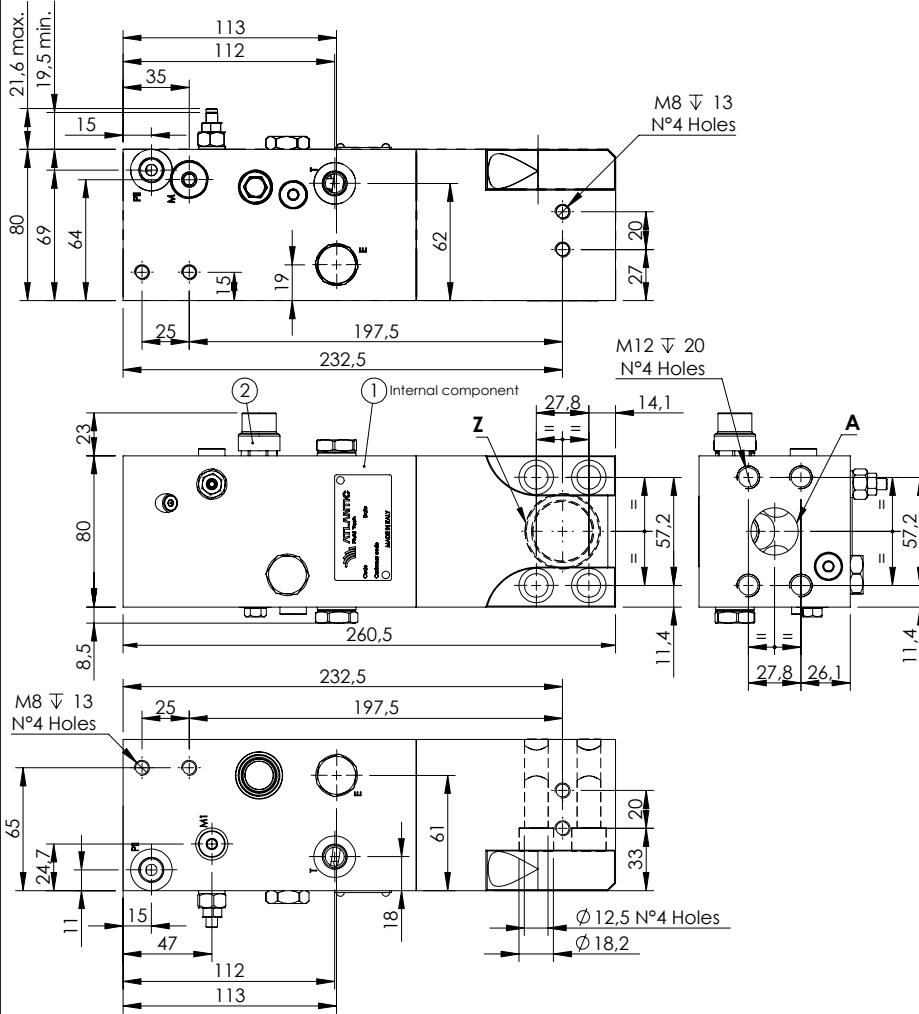


CHECK AND METERING VALVE

MLNT-350-AAGN

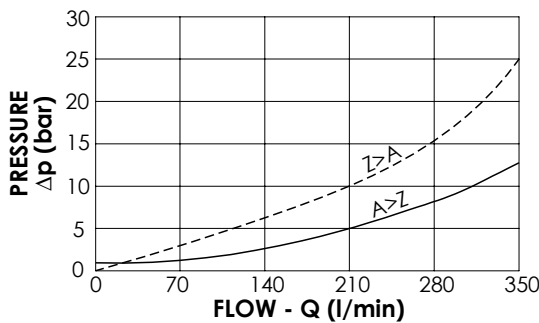
**FLANGE TYPE
1" SAE 6000**



SPECIFICATIONS

Max. operating pressure:	420 bar
Rated flow:	350 l/min
Manifold:	Steel
Weight:	10,18 kg

PATENTED



NOTES

When correctly adjusted for the special excavator installation, these valves meet the requirement of ISO 8643

ORDERING CODES

Quick code	Description	Main ports size	Standard setting (bar)	Adjust. range (bar)	Pressure increase (bar/turn)
ML000271	MLNT-350-AAGN-00-S10-N420	Z,A: 1" SAE 6000 E,T,Pii,M: G1/4" M1: G1/8"	① 5,5 Crack. pr. ② 420 Q=5 l/min	① 3 - 17 ② 200 - 420	① 2,4 ② 236