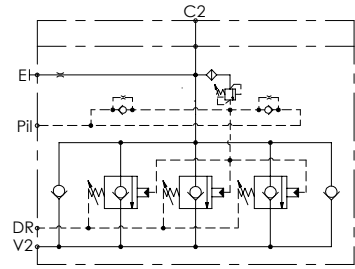
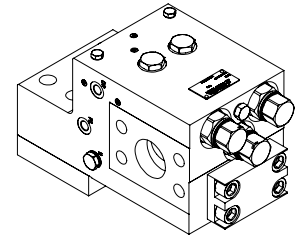
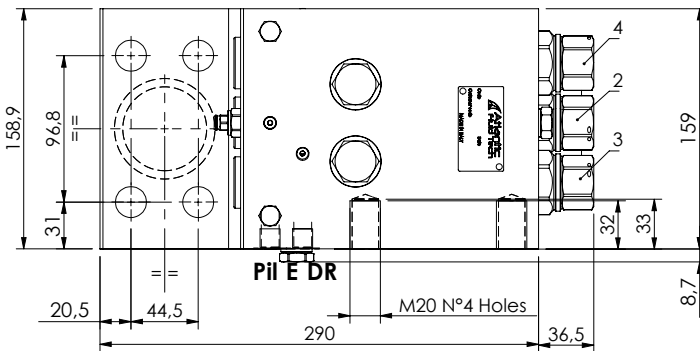
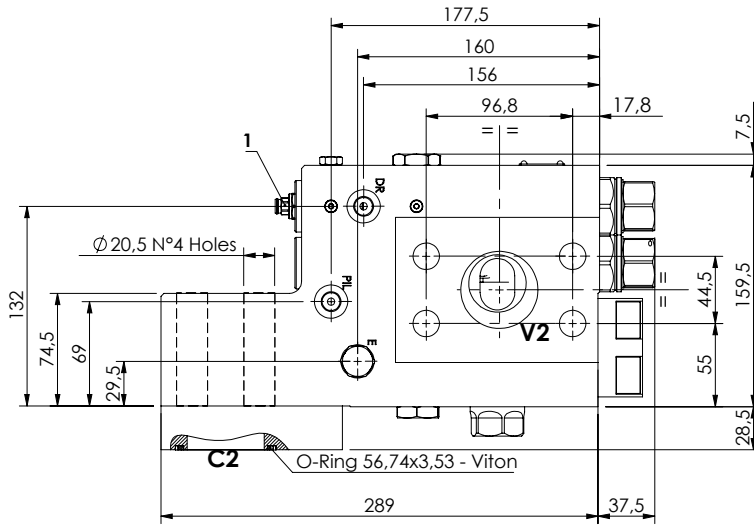


CHECK AND METERING VALVE

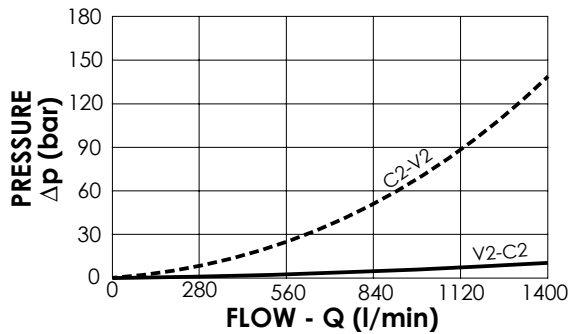
**MLST-1400-AAGR**

**FLANGED TYPE  
2" SAE 6000  
RIGHT VERSION**



**SPECIFICATIONS**

Max. operating pressure:	420 bar
Rated flow:	1400 l/min
Manifold:	Steel
Weight:	45,87 kg



**NOTES**

When correctly adjusted for the special excavator installation, these valves meet the requirement of ISO 8643

**ORDERING CODES**

Quick code	Description	Main ports size	Standard setting (bar, Q=5 l/min)	Adjust. range (bar)	Pressure increase (bar/turn)
ML000167	MLST-1400-AAGR-00-S20-N420	V2,C2: 2" SAE 6000 E,Pil,DR: G 1/4"	① 400 Q=5 l/min ② 7,5 Crack. pr. ③ ④ 8,5 Crack. pr.	① 150-420 ② ③ ④ 3-15	① 236 ② ③ ④ 3.4