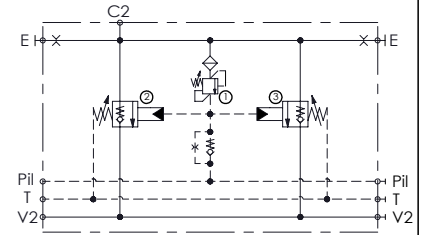
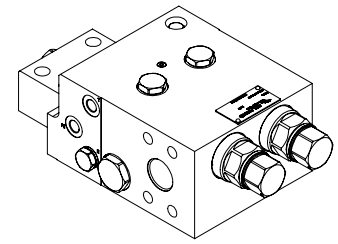
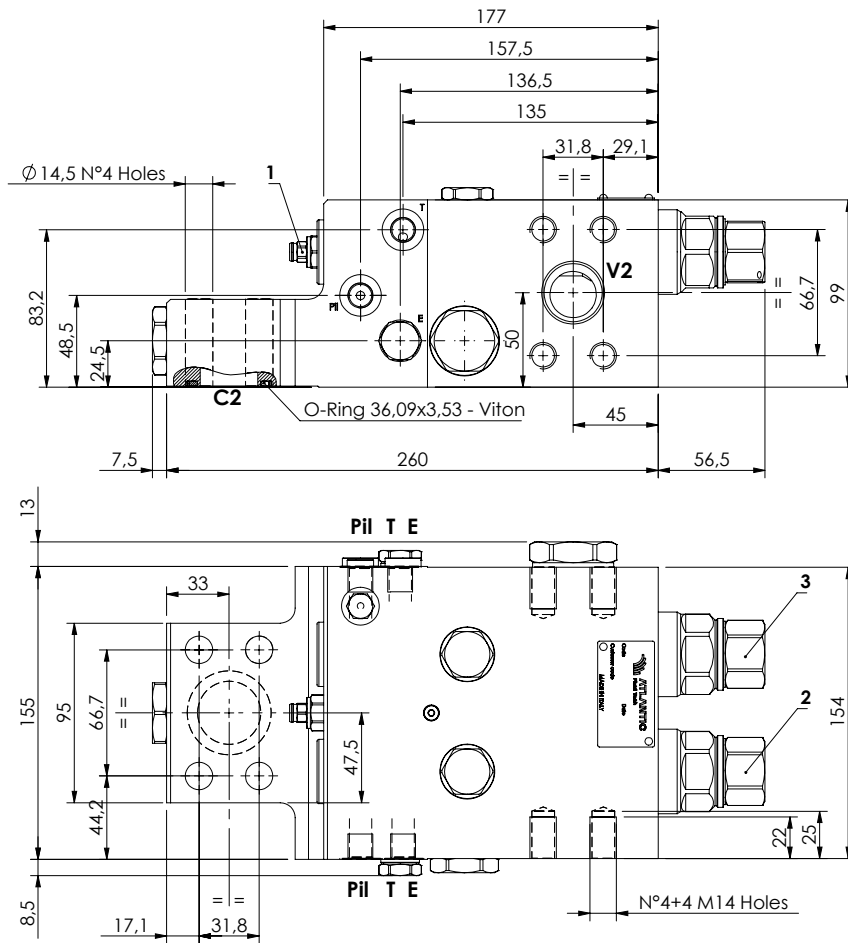


CHECK AND METERING VALVE

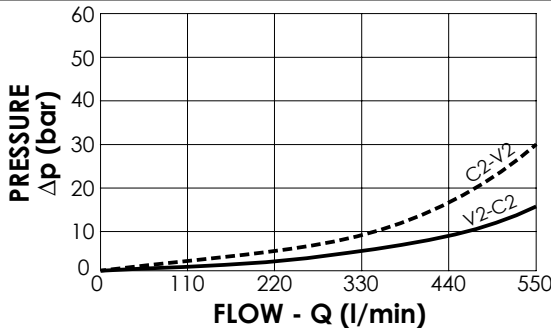
**MLST-550-AAGN**

FLANGED TYPE  
1" 1/4 SAE 6000



**SPECIFICATIONS**

Max. operating pressure:	420 bar
Rated flow:	550 l/min
Manifold:	Steel
Weight:	22,67 kg



**NOTES**

When correctly adjusted for the special excavator installation, these valves meet the requirement of ISO 8643

**ORDERING CODES**

Quick code	Description	Main ports size	Standard setting (bar)	Adjust. range (bar)	Pressure increase (bar/turn)
ML000161	MLST-550-AAGN-00-S11-N420	V2,C2:1" 1/4 SAE 6000 E,Pii,T:G 1/4"	① 350 Q=5 l/min ②③ 7.5 Crack. pr.	① 150-420 ②③ 3-15	① 236 ②③ 3.4