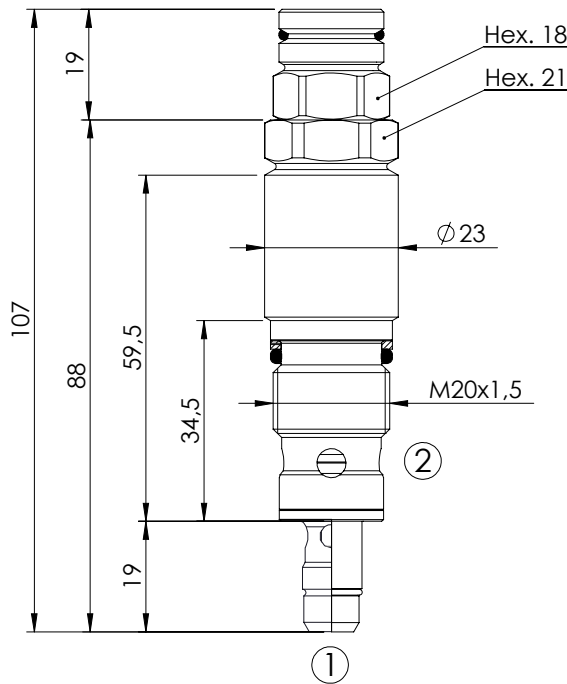
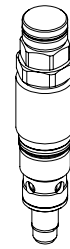


RELIEF VALVE

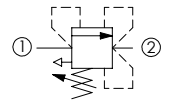
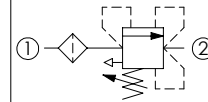
CPLT-030-DHNA

DIRECT ACTING COMPENSATED
STABILIZED PISTON
HARDENED SEAT



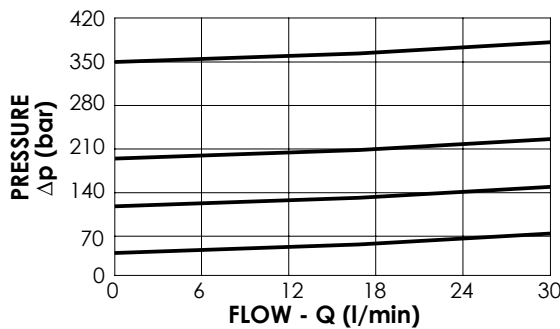
With Filter

Without Filter



SPECIFICATIONS

Max. operating pressure:	420 bar
Max. operating pressure on T:	350 bar
Rated flow:	30 l/min
Cavity:	VP000008
Weight:	0,2 kg



NOTES

Installation torque:	45-50 Nm
Seal kit:	RC700008
Filtration:	300 micron

ORDERING CODES

Quick code	Description	Standard setting (bar, Q=5 l/min)	Adjustment range (bar)	Pressure increase (bar/turn)	Options
CP000410	CPLT-030-DHNA-HF-008-N420	350	250-420	104	With Filter
CP000095	CPLT-030-DHNA-HN-008-N350	350	100-350	91	Without Filter
CP000096	CPLT-030-DHNA-HN-008-N200	200	50-210	42	Without Filter
CP000097	CPLT-030-DHNA-HN-008-N100	100	30-100	20	Without Filter
CP000098	CPLT-030-DHNA-HN-008-N050	50	10-50	10	Without Filter