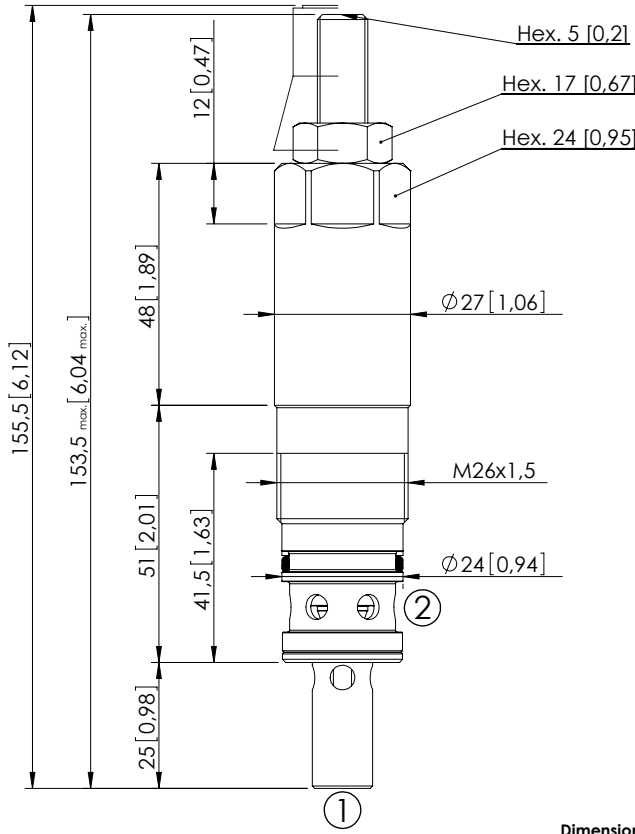


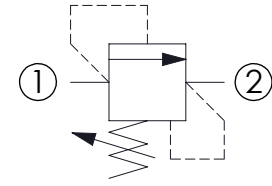
RELIEF VALVE

CPLN-080-DPNA

DIRECT ACTING
STABILIZED PISTON



Dimensions: mm [inches]

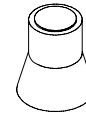


SPECIFICATIONS

| | |
|----------------------------------|----------------------------|
| Max. operating pressure: | 420 bar (6000 psi) |
| Rated flow: | 80 l/min (21 gpm) |
| Cavity: | VP000086 |
| Weight: | 0,34 kg (0,75 lbs) |
| Contamination class to ISO 4406: | See technical spec. |
| Seal kit: | RC700086 |
| Installation torque: | 80 - 95 Nm (59 - 70 ft-lb) |
| MTF _d : | 150 years |

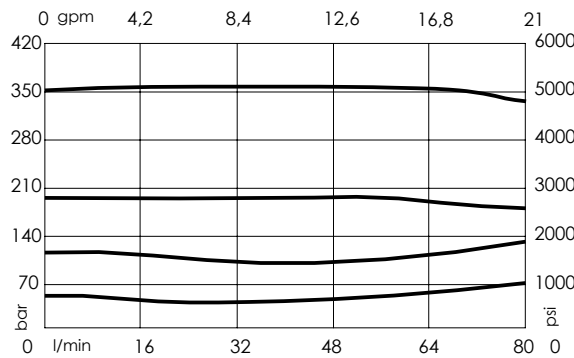
NOTES

SEALING CAP



Ordering code:
AT000021

CURVES



ORDERING CODES

| Quick code | Description | Standard setting (cracking pressure) | Adjustment range | Pressure increase |
|------------|---------------------------|--------------------------------------|-----------------------------|----------------------------|
| CP000180 | CPLN-080-DPNA-HN-086-N420 | 350 bar (5000 psi) | 150-420 bar (2100-6000 psi) | 53 bar/turn (750 psi/turn) |
| CP000026 | CPLN-080-DPNA-HN-086-N350 | 350 bar (5000 psi) | 100-350 bar (1400-5000 psi) | 42 bar/turn (600 psi/turn) |
| CP000076 | CPLN-080-DPNA-HN-086-N200 | 200 bar (2900 psi) | 60-210 bar (900-3000 psi) | 24 bar/turn (350 psi/turn) |
| CP000077 | CPLN-080-DPNA-HN-086-N100 | 100 bar (1400 psi) | 25-100 bar (400-1400 psi) | 13 bar/turn (200 psi/turn) |
| CP000099 | CPLN-080-DPNA-HN-086-N050 | 50 bar (700 psi) | 5-50 bar (100-500 psi) | 9 bar/turn (150 psi/turn) |