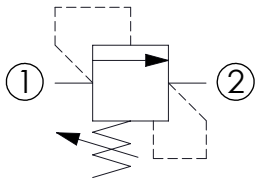
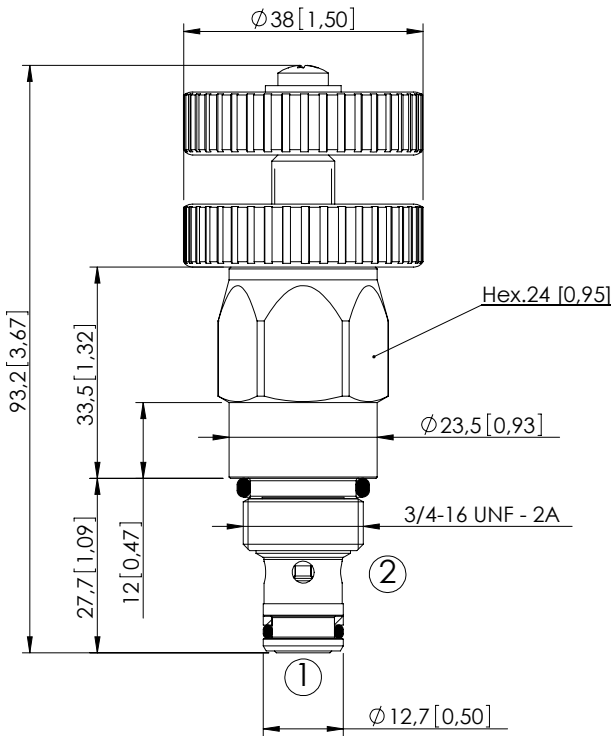


RELIEF VALVE

CPLN-020-DPNA

DIRECT ACTING



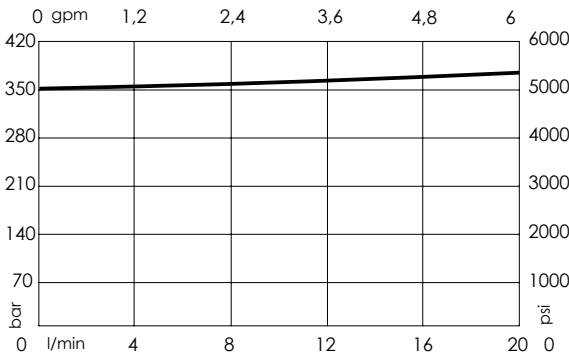
SPECIFICATIONS

| | |
|----------------------------------|----------------------------|
| Max. operating pressure: | 350 bar (5000 psi) |
| Rated flow: | 20 l/min (6 gpm) |
| Cavity: | SAE-08-2N |
| Weight: | 0,18 kg (0,4 lbs) |
| Contamination class to ISO 4406: | See technical spec. |
| Seal kit: | RA700081 |
| Installation torque: | 45 - 50 Nm (33 - 37 ft-lb) |
| MTTF _d : | 150 years |

Dimensions: mm [inches]

NOTES

CURVES



ORDERING CODES

| Quick code | Description | Standard setting (cracking pressure) | Adjustment range | Pressure increase |
|------------|---------------------------|--------------------------------------|---------------------------|----------------------------|
| CP000173 | CPLN-020-DPNA-VN-S08-N350 | 350 bar (5000 psi) | 20-350 bar (300-5000 psi) | 56 bar/turn (800 psi/turn) |
| | | | | |
| | | | | |
| | | | | |
| | | | | |
| | | | | |