



**ATLANTIC**  
Fluid Tech

## **SECTION 22**

Accessories  
and Spare

# ACCESSORIES AND SPARE

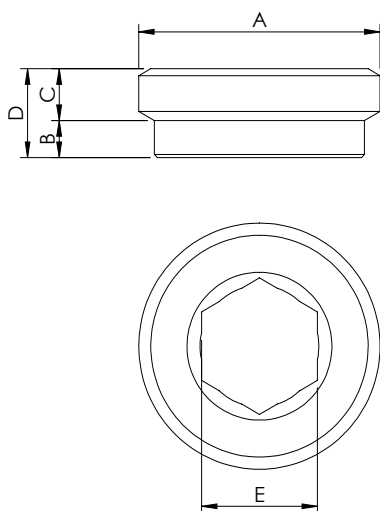


| Hydraulic scheme | Valve description  | Valve type                     | Rated flow<br>l/min (gpm) | Max.<br>pressure<br>bar (psi)      | Installation | Main port size<br>or cavity type | Page      |
|------------------|--------------------|--------------------------------|---------------------------|------------------------------------|--------------|----------------------------------|-----------|
|                  | Filter G 3/8"      | 300 micron filtration          | 50 (13)                   | $\Delta p$ 35<br>( $\Delta p$ 500) | Insert       | G1/4"                            | 22.00.010 |
|                  | Filter G 1/4"      | 300 micron filtration          | 25 (7)                    |                                    | Insert       | G3/8"                            | 22.00.010 |
|                  | Filter G 1/8"      | 300 micron filtration          | 10 (3)                    |                                    | Insert       | G1/8"                            | 22.00.010 |
|                  | Manual override    | Detent type                    | -                         | -                                  | Screw        | -                                | 22.00.020 |
|                  | Sleeve body G 1/4" | For hose burst and check valve | -                         | 350 (5000)                         | In line      | G1/4"                            | 22.00.030 |
|                  | Sleeve body G 3/8" | For hose burst and check valve | -                         | 350 (5000)                         | In line      | G3/8"                            | 22.00.030 |
|                  | Sleeve body G 1/2" | For hose burst and check valve | -                         | 350 (5000)                         | In line      | G1/2"                            | 22.00.030 |
|                  | Sleeve body G 3/4" | For hose burst and check valve | -                         | 350 (5000)                         | In line      | G3/4"                            | 22.00.030 |
|                  | Sleeve body G 1/4" | For flow control valve         | -                         | 350 (5000)                         | In line      | G1/4"                            | 22.00.040 |
|                  | Sleeve body G 3/8" | For flow control valve         | -                         | 350 (5000)                         | In line      | G3/8"                            | 22.00.040 |
|                  | Sleeve body G 1/2" | For flow control valve         | -                         | 350 (5000)                         | In line      | G1/2"                            | 22.00.040 |
|                  | Sleeve body G 3/4" | For flow control valve         | -                         | 350 (5000)                         | In line      | G3/4"                            | 22.00.040 |
|                  | CFSN-090-PBSR-06   | For flow control valve         | 0 - 6<br>(0 - 2)          | 350 (5000)                         | In line      | VP000132                         | 22.00.050 |
|                  | CFSN-090-PBSR-12   | For flow control valve         | 0 - 12<br>(0 - 3)         | 350 (5000)                         | In line      | VP000132                         | 22.00.050 |
|                  | CFSN-090-PBSR-25   | For flow control valve         | 0 - 25<br>(0 - 7)         | 350 (5000)                         | In line      | VP000132                         | 22.00.050 |
|                  | CFSN-090-PBSR-32   | For flow control valve         | 0 - 32<br>(0 - 8)         | 350 (5000)                         | In line      | VP000132                         | 22.00.050 |
|                  | CFSN-090-PBSR-50   | For flow control valve         | 0 - 50<br>(0 - 13)        | 350 (5000)                         | In line      | VP000132                         | 22.00.050 |
|                  | CFSN-090-PBSR-63   | For flow control valve         | 0 - 63<br>(0 - 17)        | 350 (5000)                         | In line      | VP000132                         | 22.00.050 |
|                  | CFSN-090-PBSR-70   | For flow control valve         | 0 - 70<br>(0 - 19)        | 350 (5000)                         | In line      | VP000132                         | 22.00.050 |
|                  | CFSN-090-PBSR-80   | For flow control valve         | 0 - 80<br>(0 - 21)        | 350 (5000)                         | In line      | VP000132                         | 22.00.050 |
|                  | CFSN-200-BHSR      | For flow control valve         | -                         | 350 (5000)                         | In line      | VP000096<br>VP000152             | 22.00.060 |
|                  | CFSN-200-BVSR      | For flow control valve         | -                         | 350 (5000)                         | In line      | VP000096<br>VP000152             | 22.00.060 |
|                  | CFSN-200-BMSR      | For flow control valve         | -                         | 350 (5000)                         | In line      | VP000096<br>VP000152             | 22.00.060 |
|                  | CFSN-090-BHSR      | For flow control valve         | -                         | 350 (5000)                         | In line      | VP000132                         | 22.00.060 |
|                  | CFSN-090-BVSR      | For flow control valve         | -                         | 350 (5000)                         | In line      | VP000132                         | 22.00.060 |
|                  | CFSN-090-BMSR      | For flow control valve         | -                         | 350 (5000)                         | In line      | VP000132                         | 22.00.060 |
|                  | CFSN-035-BHSR      | For flow control valve         | -                         | 350 (5000)                         | In line      | VP000132                         | 22.00.060 |
|                  | CFSN-035-BVSR      | For flow control valve         | -                         | 350 (5000)                         | In line      | VP000132                         | 22.00.060 |
|                  | CFSN-035-BMSR      | For flow control valve         | -                         | 350 (5000)                         | In line      | VP000132                         | 22.00.060 |
|                  | VP000057 G 3/4"    | Cavity plug                    | -                         | -                                  | In line      | VP000057                         | 22.00.070 |
|                  | VP000013 G 1"      | Cavity plug                    | -                         | -                                  | In line      | VP000013                         | 22.00.070 |
|                  | SAE-XX-2N          | Cavity plug                    | -                         | -                                  | In line      | -                                | 22.00.080 |
|                  | SAE-XX-3N          | Cavity plug                    | -                         | -                                  | In line      | -                                | 22.00.090 |
|                  | SAE-XX-4N          | Cavity plug                    | -                         | -                                  | In line      | -                                | 22.00.100 |
|                  | Seal kit           | Cavity Personalized            | -                         | -                                  | -            | -                                | 22.00.110 |
|                  |                    | Cavity SAE                     | -                         | -                                  | -            | -                                | 22.00.140 |

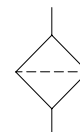
## ACCESSORIES

## FILTER

## SCREW IN FILTER



Dimensions: mm [inches]



## SPECIFICATIONS

Max. operating  $\Delta p$ : 35 bar (500 psi)

Rated flow: See table

Weight: 8 g (0,02 lbs)

Cavity: See table

Contamination class to ISO 4406: See technical spec.

MTTF<sub>d</sub>: 150 - 1200 years: See technical spec.

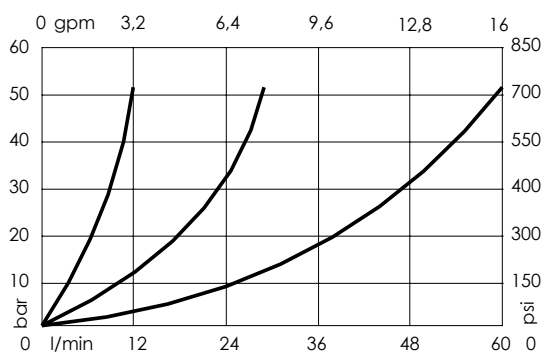
For other configurations/quick codes not available in this catalogue page please consult factory

## APPLICATION LIMITATIONS

Not suitable for use with:

- fast acting valve
- cold oil
- high viscosity oil
- other conditions creating pressure bdrop greater than 35 bar (500 psi)
- max. operatig pressure is 350 bar (5000 psi)

## CURVES



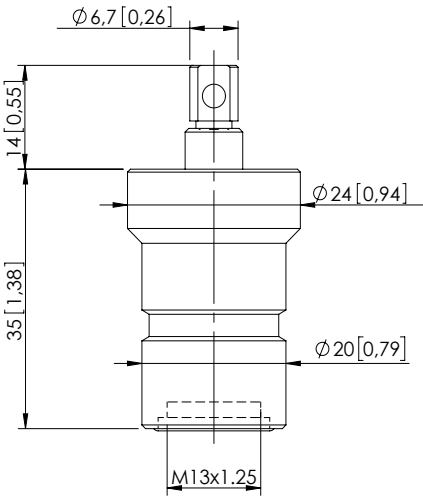
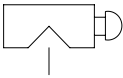
## ORDERING CODES

| Quick code | Description   | Max. flow         | Filtration             | A      | B          | C          | D          | E        | Installation torque |
|------------|---------------|-------------------|------------------------|--------|------------|------------|------------|----------|---------------------|
| CT000002   | Filter G 3/8" | 50 l/min (13 gpm) | 300 micron (0,0118 in) | G 3/8" | 2,5 [0,10] | 3,5 [0,14] | 6 [0,24]   | 8 [0,31] | 10 Nm (7 ft.-lb)    |
| CT000003   | Filter G 1/4" | 25 l/min (7 gpm)  | 300 micron (0,0118 in) | G 1/4" | 2 [0,08]   | 3 [0,12]   | 5 [0,20]   | 6 [0,24] | 5 Nm (4 ft.-lb)     |
| CT000004   | Filter G 1/8" | 10 l/min (3 gpm)  | 300 micron (0,0118 in) | G 1/8" | 1,6 [0,06] | 2,2 [0,09] | 3,8 [0,15] | 5 [0,20] | 3 Nm (2 ft.-lb)     |
|            |               |                   |                        |        |            |            |            |          |                     |
|            |               |                   |                        |        |            |            |            |          |                     |
|            |               |                   |                        |        |            |            |            |          |                     |

Revision A1

MANUAL OVERRIDE

DETENT TYPE



Dimensions: mm [inches]

NOTES

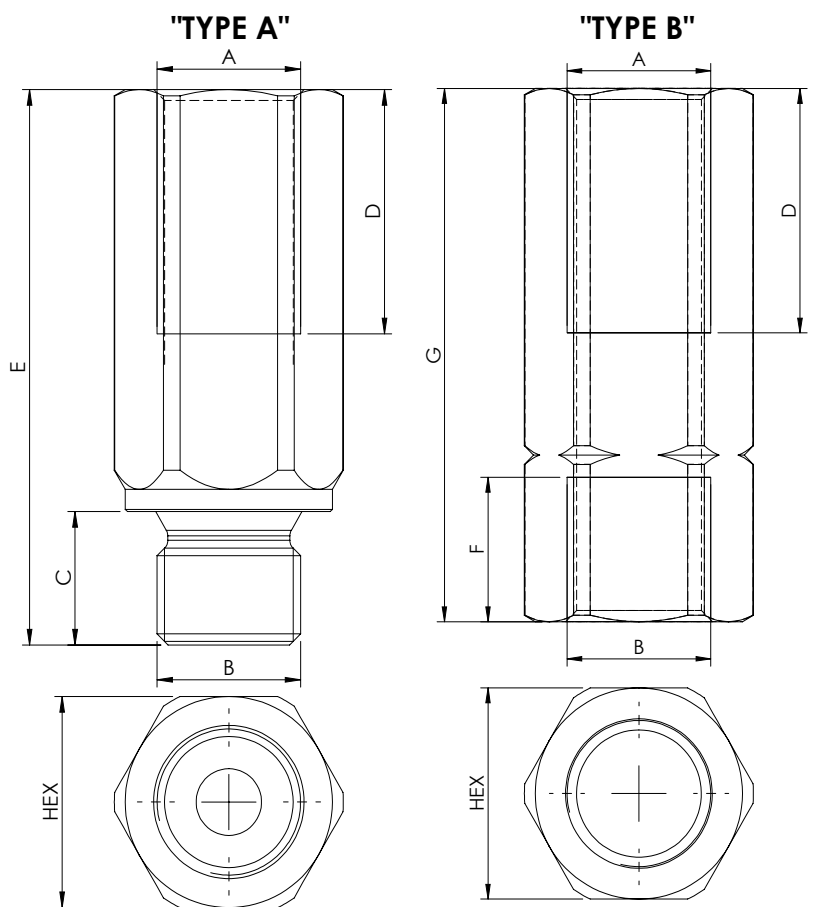
Suitable for push style override solenoid valves.

ORDERING CODES

| Quick code | Description     |  |
|------------|-----------------|--|
| ST000364   | Manula override |  |
|            |                 |  |
|            |                 |  |
|            |                 |  |
|            |                 |  |
|            |                 |  |
|            |                 |  |
|            |                 |  |

## SLEEVE BODY

## SLEEVE



Dimensions: mm [inches]

## SPECIFICATIONS

Max. operating pressure: 350 bar (5000 psi)

Material: Steel

Contamination class to ISO 4406: See technical spec.

MTF<sub>d</sub>: 150 - 1200 years: See technical spec.

## NOTES

Suitable for:  
 -Hose burst valve (CFHN-XXX-MHST)  
 For other configurations/quick codes not available in this catalogue page  
 please consult factory

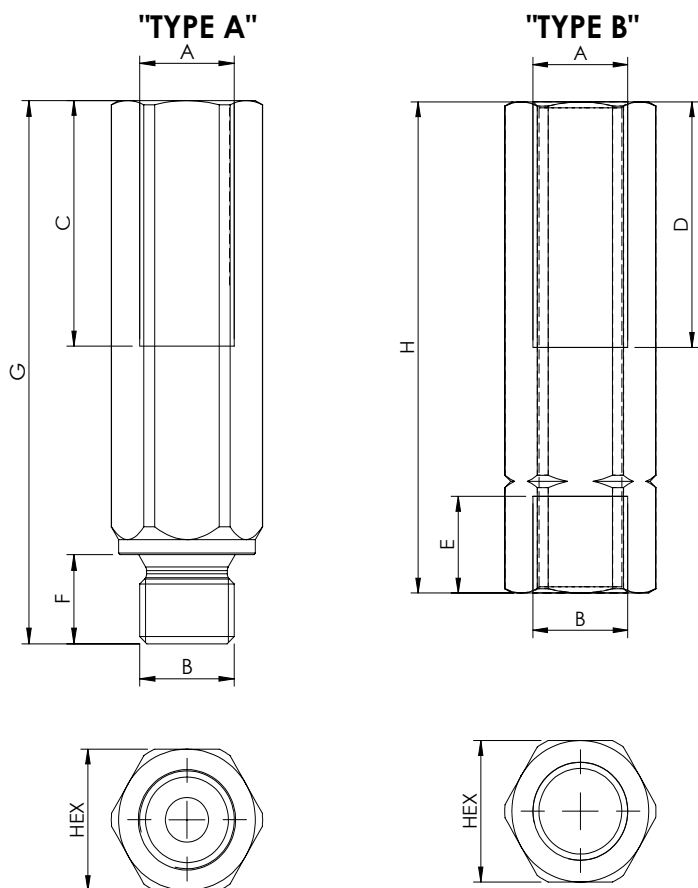
## ORDERING CODES

| Quick code "TYPE A" | Quick code "TYPE B" | A/B    | C         | D         | E         | F         | G         | Hex.      | Weight "TYPE A"   | Weight "TYPE B"   |
|---------------------|---------------------|--------|-----------|-----------|-----------|-----------|-----------|-----------|-------------------|-------------------|
| PC000127            | PC000315            | G 1/4" | 12 [0,47] | 22 [0,86] | 50 [1,97] | 13 [0,51] | 48 [1,89] | 19 [0,75] | 0,07 kg (0,15 lb) | 0,07 kg (0,15 lb) |
| PC000128            | PC000260            | G 3/8" | 12 [0,47] | 26 [1,02] | 55 [2,17] | 13 [0,51] | 52 [2,05] | 22 [0,87] | 0,09 kg (0,20 lb) | 0,09 kg (0,20 lb) |
| PC000129            | PC000349            | G 1/2" | 14 [0,55] | 30 [1,18] | 65 [2,55] | 15 [0,59] | 60 [2,36] | 27 [1,06] | 0,16 kg (0,35 lb) | 0,15 kg (0,33 lb) |
| PC000130            | PC000496            | G 3/4" | 16 [0,63] | 38 [1,49] | 78 [3,07] | 17 [0,66] | 72 [2,83] | 32 [1,26] | 0,25 kg (0,55 lb) | 0,23 kg (0,51 lb) |
| PC000580            | PC000581            | G 1"   | 18 [0,70] | 47 [1,85] | 92 [3,62] | 19 [0,74] | 85 [3,34] | 41 [1,61] | 0,50 kg (1,1 lb)  | 0,46 kg (1,0 lb)  |
|                     |                     |        |           |           |           |           |           |           |                   |                   |
|                     |                     |        |           |           |           |           |           |           |                   |                   |
|                     |                     |        |           |           |           |           |           |           |                   |                   |

Revision B

## SLEEVE BODY

## SLEEVE



Dimensions: mm [inches]

## SPECIFICATIONS

Max. operating pressure: 350 bar (5000 psi)

Material: Steel

Contamination class to ISO 4406: See technical spec.

MTTF<sub>d</sub>: 150 - 1200 years: See technical spec.

## NOTES

Suitable for:  
-Flow control valves (CFST-XXX-MDST)

For other configurations/quick codes not available in this catalogue page  
please consult factory

## ORDERING CODES

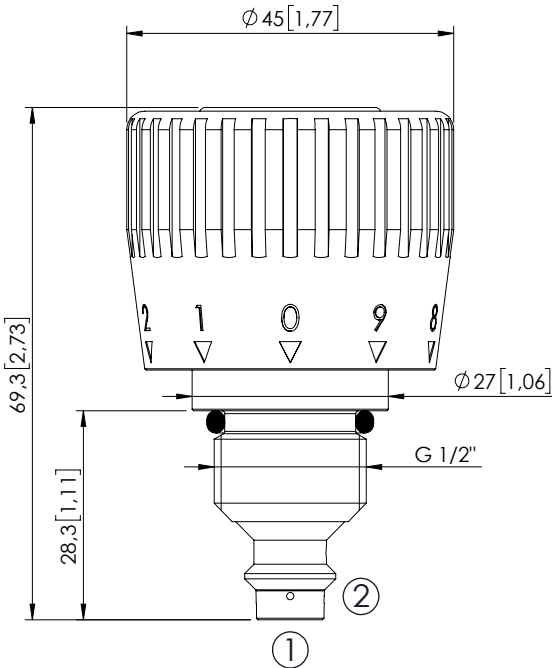
| Quick code<br>"TYPE A" | Quick code<br>"TYPE B" | A/B    | C         | D         | E         | F         | G          | H          | Hex.      | Weight<br>"TYPE A"   | Weight<br>"TYPE B"   |
|------------------------|------------------------|--------|-----------|-----------|-----------|-----------|------------|------------|-----------|----------------------|----------------------|
| PC000196               | PC000232               | G 1/4" | 33 [1,30] | 33 [1,30] | 13 [0,51] | 12 [0,47] | 73 [2,87]  | 66 [2,60]  | 19 [0,75] | 0,12 kg<br>(0,26 lb) | 0,10 kg<br>(0,22 lb) |
| PC000197               | PC000249               | G 3/8" | 40 [1,57] | 34 [1,34] | 13 [0,51] | 12 [0,47] | 82 [3,23]  | 70 [2,76]  | 22 [0,87] | 0,15 kg<br>(0,33 lb) | 0,13 kg<br>(0,30 lb) |
| PC000162               | PC000462               | G 1/2" | 45 [1,77] | 40 [1,57] | 15 [0,59] | 14 [0,55] | 96 [3,78]  | 80 [3,15]  | 27 [1,06] | 0,25 kg<br>(0,55 lb) | 0,21 kg<br>(0,46 lb) |
| PC000198               | PC000165               | G 3/4" | 51 [2,01] | 51 [2,01] | 17 [0,66] | 16 [0,63] | 105 [4,13] | 100 [3,94] | 32 [1,26] | 0,35 kg<br>(0,77 lb) | 0,32 kg<br>(0,70 lb) |
|                        |                        |        |           |           |           |           |            |            |           |                      |                      |
|                        |                        |        |           |           |           |           |            |            |           |                      |                      |
|                        |                        |        |           |           |           |           |            |            |           |                      |                      |
|                        |                        |        |           |           |           |           |            |            |           |                      |                      |

Revision B1

ACCESSORIES

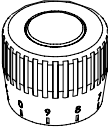
CFSN-090-BPSR

FLOW REGULATOR  
SPARE PART



Dimensions: mm [inches]

| SPECIFICATIONS                   |                                       |
|----------------------------------|---------------------------------------|
| Max. operating pressure:         | 350 bar (5000 psi)                    |
| Rated flow:                      | 80 l/min (21 gpm)                     |
| Cavity:                          | VP000132                              |
| Weight:                          | 0,25 kg 0.55 lbs)                     |
| Installation torque:             | 130 - 140 Nm (96 - 103 ft-lb)         |
| Seal kit:                        | RC700132                              |
| Contamination class to ISO 4406: | See technical spec.                   |
| MTF <sub>d</sub> :               | 150 - 1200 years: See technical spec. |

| NOTES  | OPTIONS  |
|--|--|
| Components we be supplied partially disassembled.<br>Contact AFT sales network for assembling instruction<br>For other configurations/quick codes not available in this catalogue page<br>please consult factory | <br>Graduated handknob<br>for flow regulation<br>under pressure |

ORDERING CODES

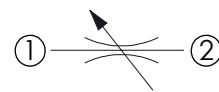
| Quick code | Description               | Flow range adjustment | Options            |
|------------|---------------------------|-----------------------|--------------------|
| CF000237   | CFSN-090-BMSR-06-132-N350 | 0-6 l/min (0-2 gpm)   | Graduated handknob |
| CF000238   | CFSN-090-BMSR-12-132-N350 | 0-12 l/min (0-3 gpm)  | Graduated handknob |
| CF000239   | CFSN-090-BMSR-25-132-N350 | 0-25 l/min (7 gpm)    | Graduated handknob |
| CF000240   | CFSN-090-BMSR-32-132-N350 | 0-32 l/min (0-8 gpm)  | Graduated handknob |
| CF000392   | CFSN-090-BMSR-50-132-N350 | 0-50 l/min (0-13 gpm) | Graduated handknob |
| CF000242   | CFSN-090-BMSR-63-132-N350 | 0-63 l/min (0-17 gpm) | Graduated handknob |
| CF000243   | CFSN-090-BMSR-70-132-N350 | 0-70 l/min (0-19 gpm) | Graduated handknob |
| CF000244   | CFSN-090-BMSR-80-132-N350 | 0-80 l/min (0-21 gpm) | Graduated handknob |

## ACCESSORIES

## FLOW CONTROL



|  | REGULATION TYPE   |   |   |
|--|---|---|---|
|  | STANDARD (G 3/4")   | STANDARD (G 1/2")   | FINE  |
| A<br>D<br>J<br>U<br>S<br>T<br>M<br>E<br>N<br>T<br><br>T<br>Y<br>P<br>E | <p>40,3 max. [1,59 max.]<br/>1 [0,04]<br/>Hex.30 [1,18]<br/>Screw and locknut<br/>Ø 38 [1,50]</p> | <p>38 max. [1,50 max.]<br/>1 [0,04]<br/>Hex.27 [1,06]<br/>Screw and locknut<br/>Ø 38 [1,50]</p> | <p>38,8 max. [1,53 max.]<br/>1 [0,04]<br/>Hex.27 [1,06]<br/>Screw and locknut<br/>Ø 38 [1,50]</p> |
|  | <p>45 max. [1,77 max.]<br/>Handknob and locknut<br/>Ø 45 [1,77]</p>                               | <p>44 max. [1,73 max.]<br/>Handknob and locknut<br/>Ø 45 [1,77]</p>                             | <p>44,5 max. [1,75 max.]<br/>Handknob and locknut<br/>Ø 45 [1,77]</p>                             |
|  | <p>44,5 max. [1,75 max.]<br/>Graduated handknob<br/>Ø 45 [1,77]</p>                               | <p>41,5 max. [1,63 max.]<br/>Graduated handknob<br/>Ø 45 [1,77]</p>                             | <p>42 max. [1,65 max.]<br/>Graduated handknob<br/>Ø 45 [1,77]</p>                                 |
|  | <p>31,3 [1,23]<br/>G3/4"<br/>Totally closed</p>   | <p>24 [0,94]<br/>G1/2"<br/>Totally closed</p>   | <p>24 [0,94]<br/>G1/2"<br/>Totally closed</p>   |



## SPECIFICATIONS

|                                  |                                       |
|----------------------------------|---------------------------------------|
| Max. operating pressure:         | 350 bar (5000 psi)                    |
| Rated flow:                      | See table                             |
| Cavity:                          | See table                             |
| Contamination class to ISO 4406: | See technical spec.                   |
| MTF <sub>d</sub> :               | 150 - 1200 years: See technical spec. |

## NOTES

Dimensions: mm [inches]

- Spare parts for flow regulations parts parts in body.
- Contact AFT sales network for assembling instruction.

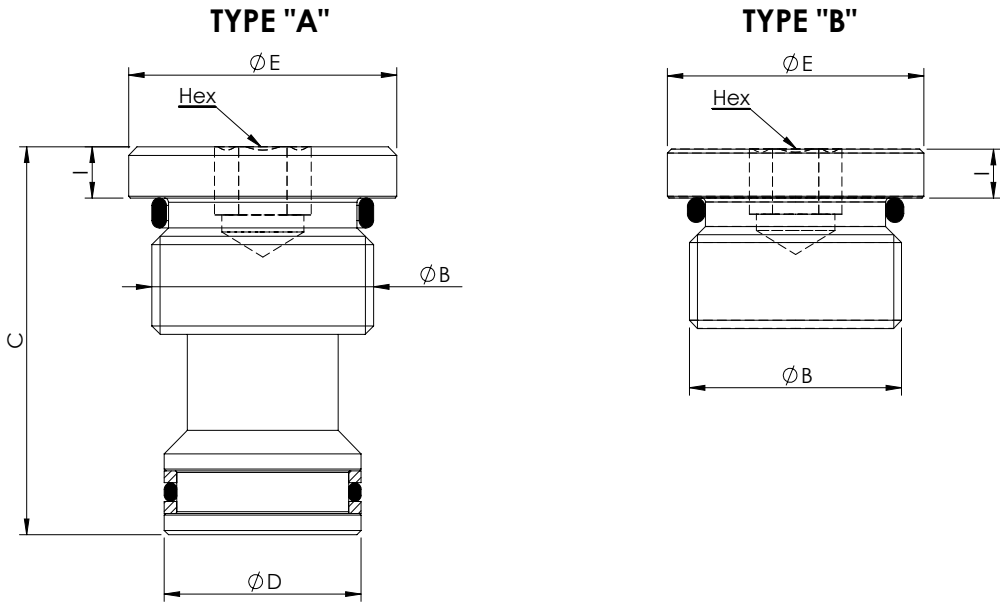
For other configurations/quick codes not available in this catalogue page please consult factory

## ORDERING CODES

| Quick code | Description               | Options              | Regulated sensivity | Max. flow regulation     | Cavity               | Installation torque       |
|------------|---------------------------|----------------------|---------------------|--------------------------|----------------------|---------------------------|
| CF000015   | CFSN-200-BHSR-NP-096-N350 | Screw and locknut    | Standard (G 3/4")   | 90-190 l/min (24-50 gpm) | VP000096<br>VP000152 | 120-150 Nm (89-111 ft-lb) |
| CF000030   | CFSN-200-BVSR-NP-096-N350 | Handknob and locknut | Standard (G 3/4")   | 90-190 l/min (24-50 gpm) | VP000096<br>VP000152 | 120-150 Nm (89-111 ft-lb) |
| CF000042   | CFSN-200-BMSR-NP-096-N350 | Graduated handknob   | Standard (G 3/4")   | 90-190 l/min (24-50 gpm) | VP000096<br>VP000152 | 120-150 Nm (89-111 ft-lb) |
| CF000029   | CFSN-090-BHSR-NP-132-N350 | Screw and locknut    | Standard (G 1/2")   | 55 l/min (15 gpm)        | VP000132             | 75-85 Nm (55-63 ft-lb)    |
| CF000019   | CFSN-090-BVSR-NP-132-N350 | Handknob and locknut | Standard (G 1/2")   | 55 l/min (15 gpm)        | VP000132             | 75-85 Nm (55-63 ft-lb)    |
| CF000033   | CFSN-090-BMSR-NP-132-N350 | Graduated handknob   | Standard (G 1/2")   | 55 l/min (15 gpm)        | VP000132             | 75-85 Nm (55-63 ft-lb)    |
| CF000036   | CFSN-035-BHSR-NP-132-N350 | Screw and locknut    | Fine                | 30 l/min (8 gpm)         | VP000132             | 75-85 Nm (55-63 ft-lb)    |
| CF000037   | CFSN-035-BVSR-NP-132-N350 | Handknob and locknut | Fine                | 30 l/min (8 gpm)         | VP000132             | 75-85 Nm (55-63 ft-lb)    |
| CF000034   | CFSN-035-BMSR-NP-132-N350 | Graduated handknob   | Fine                | 30 l/min (8 gpm)         | VP000132             | 75-85 Nm (55-63 ft-lb)    |

Revision A1



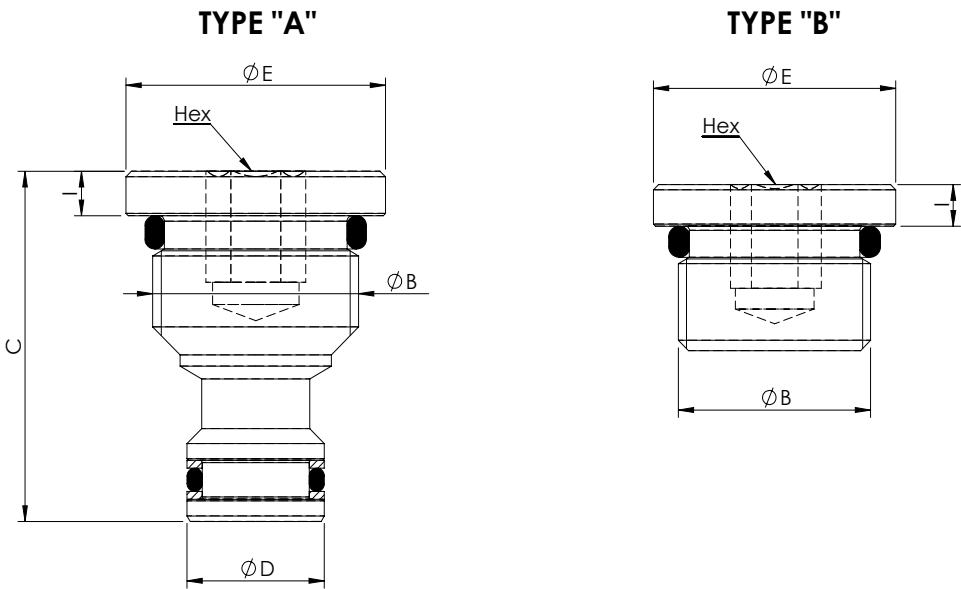


ORDERING CODES

| Quick code<br>TYPE A | Quick code<br>TYPE B | A        | B      | C           | D           | E         | F | G | Hex.      | I        | Installation<br>torque         |
|----------------------|----------------------|----------|--------|-------------|-------------|-----------|---|---|-----------|----------|--------------------------------|
| ST000259             | ST000278             | VP000057 | G 3/4" | 45,5 [1,79] | 23,5 [0,93] | 32 [1,26] |   |   | 10 [0,39] | 6 [0,24] | 110-130 Nm<br>(81-96 ft.-lb)   |
| ST000337             | ST000338             | VP000013 | G 1"   | 55 [2,17]   | 30 [1,18]   | 38 [1,50] |   |   | 13 [0,51] | 6 [0,24] | 135-150 Nm<br>(100-111 ft.-lb) |
|                      |                      |          |        |             |             |           |   |   |           |          |                                |
|                      |                      |          |        |             |             |           |   |   |           |          |                                |
|                      |                      |          |        |             |             |           |   |   |           |          |                                |
|                      |                      |          |        |             |             |           |   |   |           |          |                                |

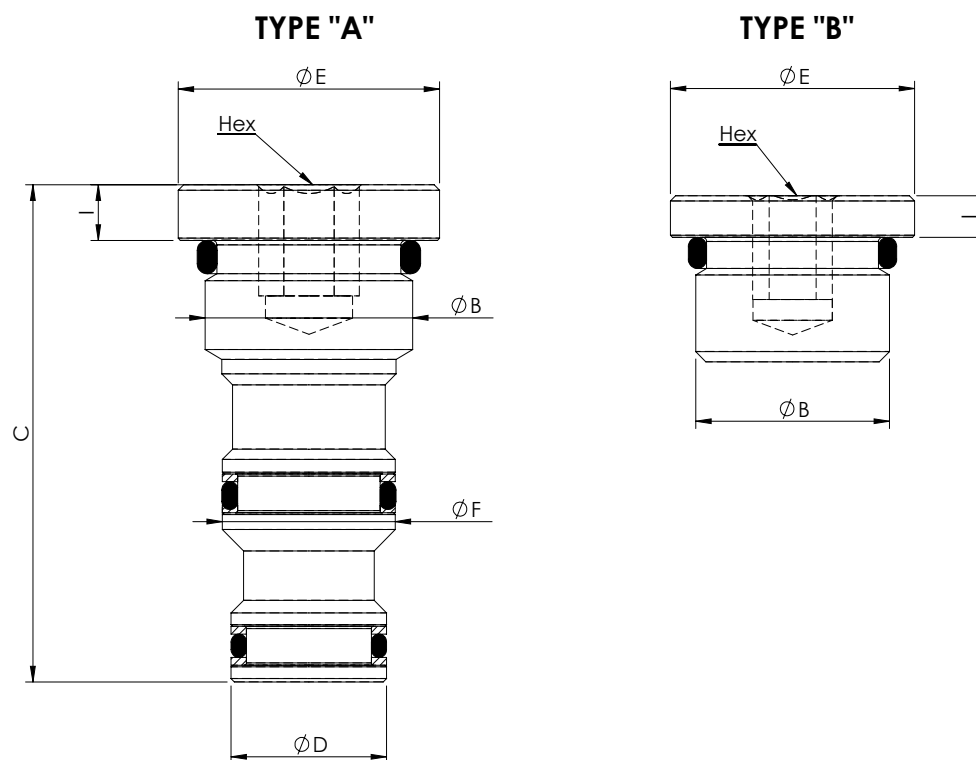
STANDARD PLUG

SAE-XXX-2N



ORDERING CODES

| Quick code<br>TYPE A | Quick code<br>TYPE B | A         | B             | C           | D            | E         | F | Hex.      | I        | Installation<br>torque        |
|----------------------|----------------------|-----------|---------------|-------------|--------------|-----------|---|-----------|----------|-------------------------------|
| ST000027             | ST000331             | SAE-08-2N | 3/4-16 UNF    | 31,5 [1,24] | 12,7 [0,50]  | 24 [0,94] |   | 8 [0,31]  | 4 [0,16] | 45-50 Nm<br>(33-37 ft-lb)     |
| ST000332             | ST000333             | SAE-10-2N | 7/8-14 UNF    | 38 [1,50]   | 15,87 [0,62] | 27 [1,06] |   | 10 [0,39] | 6 [0,24] | 50-55 Nm<br>(37-41 ft-lb)     |
|                      | ST000208             | SAE-12-2N | 1 1/16-12 UNF |             |              | 32 [1,26] |   | 13 [0,51] | 6 [0,24] | 100-110 Nm<br>(74-81 ft-lb)   |
|                      | ST000396             | SAE-16-2N | 1 5/16-12 UNF |             |              | 38 [1,50] |   | 15 [0,59] | 6 [0,24] | 170-190 Nm<br>(125-140 ft-lb) |
|                      | ST000397             | SAE-20-2N | 1 5/8-12 UNF  |             |              | 46 [1,81] |   | 17 [0,67] | 6 [0,24] | 280-320 Nm<br>(207-236 ft-lb) |
|                      |                      |           |               |             |              |           |   |           |          |                               |

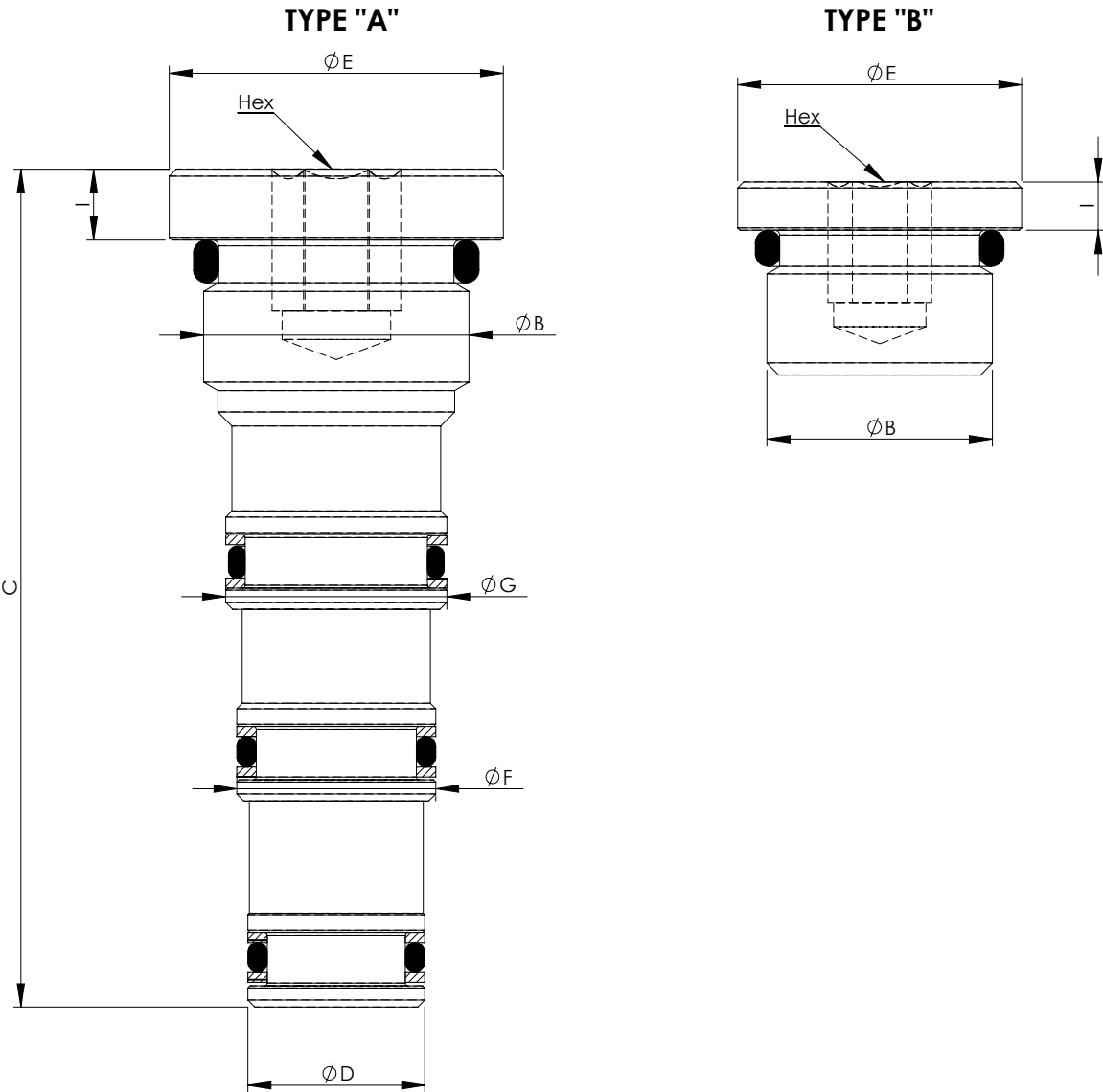


## ORDERING CODES

| Quick code<br>TYPE A | Quick code<br>TYPE B | A         | B             | C           | D            | E         | F            | Hex.      | I        | Installation<br>torque        |
|----------------------|----------------------|-----------|---------------|-------------|--------------|-----------|--------------|-----------|----------|-------------------------------|
| ST000292             | ST000331             | SAE-08-3N | 3/4-16 UNF    | 44,7 [1,76] | 14,27 [0,56] | 24 [0,94] | 15,87 [0,62] | 8 [0,31]  | 5 [0,20] | 45-50 Nm<br>(33-37 ft-lb)     |
| ST000334             | ST000333             | SAE-10-3N | 7/8-14 UNF    | 53 [2,09]   | 15,87 [0,62] | 27 [1,06] | 17,47 [0,69] | 10 [0,39] | 6 [0,24] | 50-55 Nm<br>(37-41 ft-lb)     |
|                      | ST000208             | SAE-12-3N | 1 1/16-12 UNF |             |              | 32 [1,26] |              | 13 [0,51] | 6 [0,24] | 100-110 Nm<br>(74-81 ft-lb)   |
|                      | ST000396             | SAE-16-3N | 1 5/16-12 UNF |             |              | 38 [1,50] |              | 15 [0,59] | 6 [0,24] | 170-190 Nm<br>(125-140 ft-lb) |
|                      | ST000397             | SAE-20-3N | 1 5/8-12 UNF  |             |              | 46 [1,81] |              | 17 [0,67] | 6 [0,24] | 280-320 Nm<br>(207-236 ft-lb) |
|                      |                      |           |               |             |              |           |              |           |          |                               |

Revision C1

SAE-XXX-4N



ORDERING CODES

| Quick code<br>TYPE A | Quick code<br>TYPE B | A         | B             | C           | D            | E         | F            | G            | Hex.      | I        | Installation<br>torque        |
|----------------------|----------------------|-----------|---------------|-------------|--------------|-----------|--------------|--------------|-----------|----------|-------------------------------|
| ST000335             | ST000331             | SAE-08-4N | 3/4-16 UNF    | 59 [2,32]   | 12,7 [0,50]  | 24 [0,94] | 14,28 [0,56] | 15,87 [0,62] | 8 [0,31]  | 5 [0,20] | 45-50 Nm<br>(33-37 ft-lb)     |
| ST000336             | ST000333             | SAE-10-4N | 7/8-14 UNF    | 68,6 [2,70] | 15,87 [0,62] | 27 [1,06] | 17,47 [0,69] | 19,05 [0,75] | 10 [0,39] | 6 [0,24] | 50-55 Nm<br>(37-41 ft-lb)     |
|                      | ST000208             | SAE-12-4N | 1 1/16-12 UNF |             |              | 32 [1,26] |              |              | 13 [0,51] | 6 [0,24] | 100-110 Nm<br>(74-81 ft-lb)   |
|                      | ST000396             | SAE-16-4N | 1 5/16-12 UNF |             |              | 38 [1,50] |              |              | 15 [0,59] | 6 [0,24] | 170-190 Nm<br>(125-140 ft-lb) |
|                      | ST000397             | SAE-20-4N | 1 5/8-12 UNF  |             |              | 46 [1,81] |              |              | 17 [0,67] | 6 [0,24] | 280-320 Nm<br>(207-236 ft-lb) |
|                      |                      |           |               |             |              |           |              |              |           |          |                               |

## SEAL KIT

## SEAL KIT-SPECIAL CAVITIES



| CAVITY   | BACKUP RING TYPE   | NBR 70   | NBR 90   | VITON 80 |
|----------|--------------------|----------|----------|----------|
| VP000005 | Single backup ring | RC700005 |          |          |
|          | Double backup ring |          |          |          |
| VP000006 | Single backup ring | RC700006 |          |          |
|          | Double backup ring |          |          |          |
| VP000008 | Single backup ring | RC700008 |          |          |
|          | Double backup ring |          |          |          |
| VP000013 | Single backup ring |          | RC900013 |          |
|          | Double backup ring |          | RD900013 |          |
| VP000015 | Single backup ring | RC700015 |          |          |
|          | Double backup ring |          |          |          |
| VP000016 | Single backup ring | RC700016 |          |          |
|          | Double backup ring |          |          |          |
| VP000018 | Single backup ring | -        |          |          |
|          | Double backup ring | -        |          |          |
| VP000028 | Single backup ring | RC700028 |          |          |
|          | Double backup ring |          |          |          |
| VP000038 | Single backup ring | RC700038 |          |          |
|          | Double backup ring |          |          |          |
| VP000057 | Single backup ring |          | RC900057 |          |
|          | Double backup ring |          | RD900057 |          |
| VP000058 | Single backup ring | RC700058 |          |          |
|          | Double backup ring |          |          |          |
| VP000065 | Single backup ring |          | RC900065 |          |
|          | Double backup ring |          | RD900065 |          |
| VP000070 | Single backup ring | RC700070 |          |          |
|          | Double backup ring |          |          |          |
| VP000079 | Single backup ring | -        |          |          |
|          | Double backup ring | -        |          |          |
| VP000080 | Single backup ring |          | RC900080 |          |
|          | Double backup ring |          |          |          |
| VP000086 | Single backup ring | RC700086 |          |          |
|          | Double backup ring |          |          |          |
| VP000096 | Single backup ring |          |          |          |
|          | Double backup ring |          |          |          |
| VP000098 | Single backup ring | RC700098 |          |          |
|          | Double backup ring |          |          |          |
| VP000120 | Single backup ring |          |          |          |
|          | Double backup ring | RD700120 |          |          |
| VP000121 | Single backup ring |          |          |          |
|          | Double backup ring | RD700121 |          |          |

## SEAL KIT



## SEAL KIT - SPECIAL CAVITIES

| CAVITY   | BACKUP RING TYPE   | NBR 70   | NBR 90   | VITON 80 |
|----------|--------------------|----------|----------|----------|
| VP000127 | Single backup ring |          |          |          |
|          | Double backup ring |          | RD900127 |          |
| VP000128 | Single backup ring |          |          |          |
|          | Double backup ring |          | RD900128 |          |
| VP000132 | Single backup ring |          |          |          |
|          | Double backup ring | RC700132 |          |          |
| VP000154 | Single backup ring |          | RC900154 |          |
|          | Double backup ring |          |          |          |
| VP000158 | Single backup ring | -        |          |          |
|          | Double backup ring | -        |          |          |
| VP000161 | Single backup ring | RC700161 |          |          |
|          | Double backup ring |          |          |          |
| VP000165 | Single backup ring | RC700165 |          |          |
|          | Double backup ring |          |          |          |
| VP000166 | Single backup ring | RC700166 |          |          |
|          | Double backup ring |          |          |          |
| VP000174 | Single backup ring |          |          |          |
|          | Double backup ring | RD700174 |          |          |
| VP000178 | Single backup ring | RC700178 |          |          |
|          | Double backup ring |          |          |          |
| VP000180 | Single backup ring |          |          |          |
|          | Double backup ring |          |          |          |
| VP000189 | Single backup ring | RC700189 |          |          |
|          | Double backup ring |          |          |          |
| VP000193 | Single backup ring | RC700193 |          |          |
|          | Double backup ring |          |          |          |
| VP000198 | Single backup ring |          |          |          |
|          | Double backup ring | RD700198 |          |          |
| VP000202 | Single backup ring | -        |          |          |
|          | Double backup ring | -        |          |          |
| VP000204 | Single backup ring | RC700204 |          |          |
|          | Double backup ring |          |          |          |
| VP000216 | Single backup ring | RC700216 |          |          |
|          | Double backup ring |          |          |          |
| VP000249 | Single backup ring |          | RC900249 |          |
|          | Double backup ring |          |          |          |
| VP000250 | Single backup ring |          | RC900250 |          |
|          | Double backup ring |          |          |          |
| VP000263 | Single backup ring | RC700263 |          |          |
|          | Double backup ring |          |          |          |



SEAL KIT - SPECIAL CAVITIES

| CAVITY   | BACKUP RING TYPE   | NBR 70   | NBR 90 | VITON 80 |
|----------|--------------------|----------|--------|----------|
| VP000307 | Single backup ring | -        |        |          |
|          | Double backup ring | -        |        |          |
| VP000309 | Single backup ring | -        |        |          |
|          | Double backup ring | -        |        |          |
| VP000310 | Single backup ring | -        |        |          |
|          | Double backup ring | -        |        |          |
| VP000311 | Single backup ring | -        |        |          |
|          | Double backup ring | -        |        |          |
| VP000312 | Single backup ring | -        |        |          |
|          | Double backup ring | -        |        |          |
| VP000314 | Single backup ring | RC700314 |        |          |
|          | Double backup ring |          |        |          |
| VP000330 | Single backup ring | RC700330 |        |          |
|          | Double backup ring |          |        |          |
| VP000338 | Single backup ring |          |        |          |
|          | Double backup ring | RD700338 |        |          |
| VP000371 | Single backup ring | RC700371 |        |          |
|          | Double backup ring |          |        |          |
| VP000445 | Single backup ring | RC700445 |        |          |
|          | Double backup ring |          |        |          |
|          |                    |          |        |          |
|          |                    |          |        |          |
|          |                    |          |        |          |
|          |                    |          |        |          |
|          |                    |          |        |          |
|          |                    |          |        |          |
|          |                    |          |        |          |
|          |                    |          |        |          |
|          |                    |          |        |          |
|          |                    |          |        |          |
|          |                    |          |        |          |
|          |                    |          |        |          |
|          |                    |          |        |          |
|          |                    |          |        |          |
|          |                    |          |        |          |
|          |                    |          |        |          |
|          |                    |          |        |          |
|          |                    |          |        |          |

## SEAL KIT

## SEAL KIT-STANDARD CAVITIES



| CAVITY    | BACKUP RING TYPE   | NBR 70   | NBR 90   | VITON 80 |
|-----------|--------------------|----------|----------|----------|
| SAE-08-2N | Single backup ring | RA700081 | RA900081 |          |
|           | Double backup ring | RB700081 | RB900081 |          |
| SAE-10-2N | Single backup ring | RA700082 | RA900082 |          |
|           | Double backup ring | RB700082 | RB900082 |          |
| SAE-12-2N | Single backup ring | RA700083 | RA900083 |          |
|           | Double backup ring |          |          |          |
| SAE-16-2N | Single backup ring | RA700084 | RA900084 |          |
|           | Double backup ring |          |          |          |
| SAE-20-2N | Single backup ring |          | RA900085 |          |
|           | Double backup ring |          |          |          |
| SAE-08-3C | Single backup ring | RA700086 |          |          |
|           | Double backup ring |          |          |          |
| SAE-10-3C | Single backup ring | RA700087 |          |          |
|           | Double backup ring | RB700087 |          |          |
| SAE-12-3C | Single backup ring |          |          |          |
|           | Double backup ring |          |          |          |
| SAE-16-3C | Single backup ring |          |          |          |
|           | Double backup ring |          |          |          |
| SAE-20-3C | Single backup ring |          |          |          |
|           | Double backup ring |          | RB900090 |          |
| SAE-08-3N | Single backup ring |          |          |          |
|           | Double backup ring | RB700091 |          |          |
| SAE-10-3N | Single backup ring | RA700092 |          |          |
|           | Double backup ring | RB700092 |          |          |
| SAE-12-3N | Single backup ring | RA700093 |          |          |
|           | Double backup ring |          |          |          |
| SAE-16-3N | Single backup ring |          |          |          |
|           | Double backup ring | RB700094 |          |          |
| SAE-20-3N | Single backup ring |          |          |          |
|           | Double backup ring |          |          |          |
| SAE-08-4N | Single backup ring |          |          |          |
|           | Double backup ring | RB700101 |          |          |
| SAE-10-4N | Single backup ring |          |          |          |
|           | Double backup ring | RB700102 |          |          |
| SAE-12-4N | Single backup ring |          |          |          |
|           | Double backup ring | RB700103 |          |          |
| SAE-16-4N | Single backup ring |          |          |          |
|           | Double backup ring | RB700104 |          |          |
| SAE-20-4N | Single backup ring |          |          |          |
|           | Double backup ring |          |          |          |