



ATLANTIC
Fluid Tech

SECTION 12

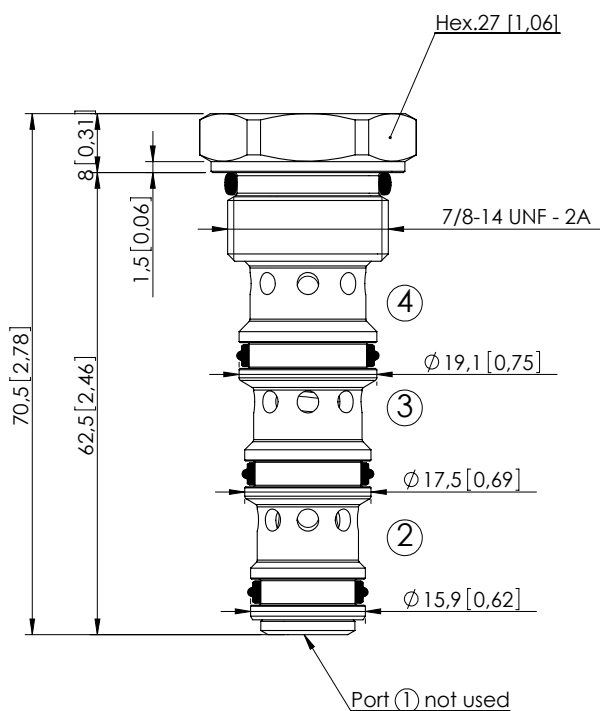
Flow Dividers
and
Combiners

FLOW DIVIDERS AND COMBINERS

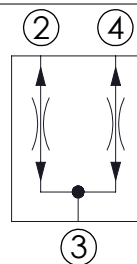


| Hydraulic scheme | Valve description | Valve type | Rated flow l/min (gpm) | Max. pressure bar (psi) | Installation | Main port size or cavity type | Page |
|------------------|-------------------------------|----------------------------------|---------------------------|----------------------------|--------------|----------------------------------|-------------------|
| | CFDT-055-BRAR | Spool type, divider and combiner | 55 (15) | 350 (5000) | Cartridge | SAE-10-4N | 12.01. 010 |
| | CFDT-160-BFRP | Spool type, divider and combiner | 160 (43) | 350 (5000) | Cartridge | SAE-16-4N | 12.01. 020 |
| | MFDT-040-BFTR | Spool type, divider and combiner | 40 (11) | 210 (3000) | In line | G 3/8" - G 1/2" | 12.02. 030 |
| | MFDT-150-BFLR | Spool type, divider and combiner | 150 (40) | 210 (3000) | In line | G 1" - G 3/4" | 12.02. 040 |
| | KFDT-055-BFAR | Spool type, divider and combiner | 55 (15) | 210 (3000) | In line | G 1/4" - G 3/8" - G 1/2" | 12.02. 050 |

CFDT-055-BFRR



Dimensions: mm [inches]



SPECIFICATIONS

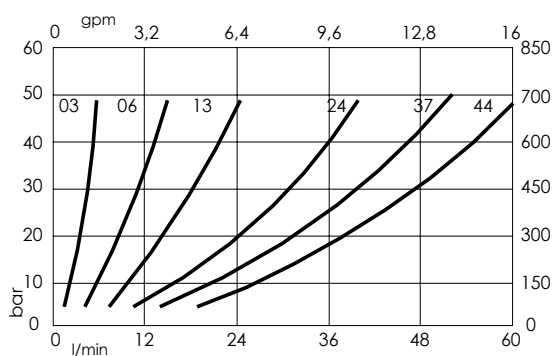
| | |
|----------------------------------|---------------------------------------|
| Max. operating pressure: | 350 bar (5000 psi) |
| Division or combination: | 50 %- 50 % |
| Cavity: | SAE-10-4N-3P |
| Weight: | 0,13 kg (0,29 lbs) |
| Seal kit: | RB700102 |
| Installation torque: | 50 - 57 Nm (37 - 42 ft-lb) |
| Contamination class to ISO 4406: | See technical spec. |
| MTTF _d : | 150 - 1200 years: See technical spec. |

NOTES

Flow divider accuracy: $\pm 7/8\%$ between 40-100% of max. input flow.
Other dividing ratios available.

For other configurations/quick codes not available in this catalogue page please consult factory

CURVES

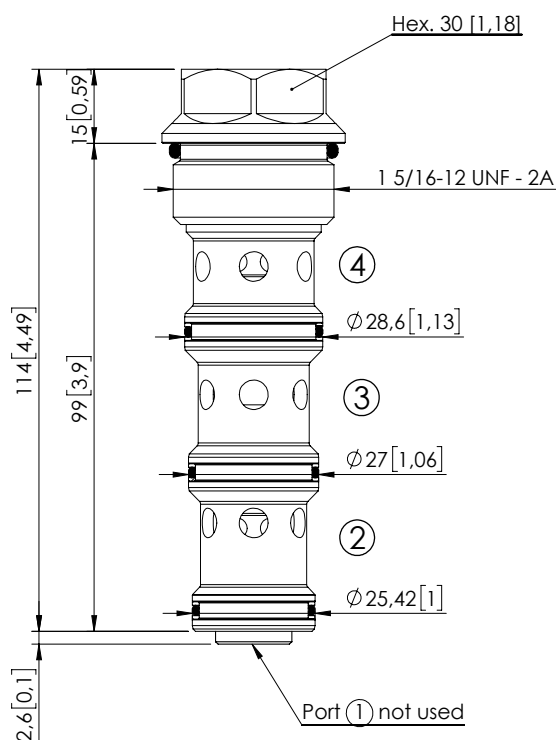


ORDERING CODES

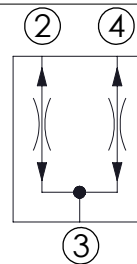
| Quick code | Description | Inlet range flow | |
|------------|---------------------------|-------------------------------|--|
| CF000047 | CFDT-055-BFRR-03-S10-N350 | 1,2-3 l/min (0,3-0,8 gpm) | |
| CF000048 | CFDT-055-BFRR-06-S10-N350 | 3-6 l/min (0,8-1,6 gpm) | |
| CF000049 | CFDT-055-BFRR-13-S10-N350 | 6-13 l/min (1,6-3,4 gpm) | |
| CF000050 | CFDT-055-BFRR-24-S10-N350 | 10-24 l/min (2,6-6,3 gpm) | |
| CF000001 | CFDT-055-BFRR-37-S10-N350 | 15-37 l/min (3,9-9,8 gpm) | |
| CF000051 | CFDT-055-BFRR-44-S10-N350 | 18-44 l/min (4,8-11,6 gpm) | |

Revision C1

CFDT-160-BFRR



Dimensions: mm [inches]



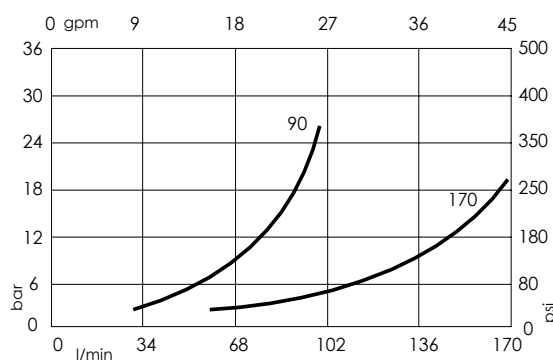
SPECIFICATIONS

| | |
|----------------------------------|---------------------------------------|
| Max. operating pressure: | 350 bar (5000 psi) |
| Division or combination: | 50 %- 50 % |
| Cavity: | SAE-16-4N |
| Weight: | 0,36 kg (0,79 lbs) |
| Seal kit: | RB700104 |
| Installation torque: | 118 - 132 Nm (87 - 97 ft-lb) |
| Contamination class to ISO 4406: | See technical spec. |
| MTTF _d : | 150 - 1200 years: See technical spec. |

NOTES

Flow divider accuracy: $\pm 7/8\%$ between 40-100% of max. input flow.
 Other dividing ratios available.
 For other configurations/quick codes not available in this catalogue page please consult factory

CURVES

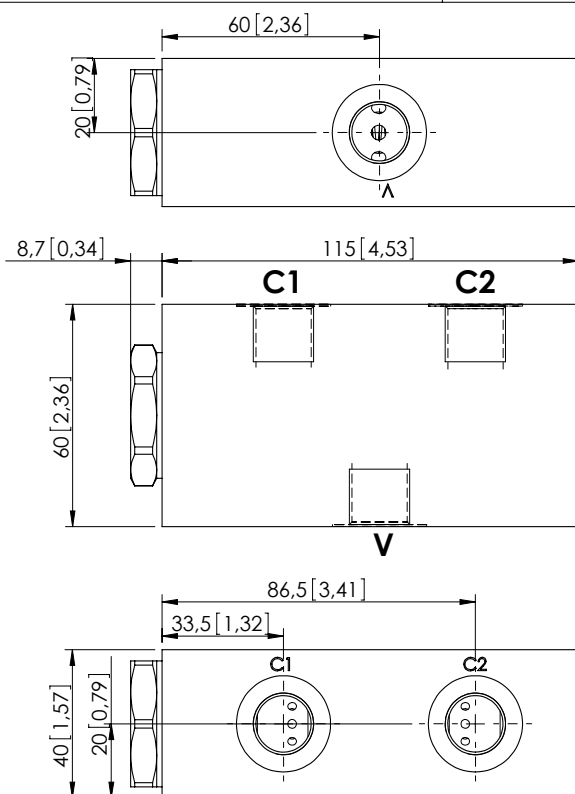


ORDERING CODES

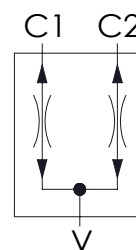
| Quick code | Description | Inlet range flow | |
|------------|----------------------------|-----------------------------|--|
| CF000364 | CFDT-160-BFRR-90-S16-N350 | 30-90 l/min (8-24 gpm) | |
| CF000370 | CFDT-160-BFRR-170-S16-N350 | 50-170 l/min (13-45 gpm) | |
| | | | |
| | | | |
| | | | |
| | | | |

Revision C1

MFDT-040-BFTR



Dimensions: mm [inches]



SPECIFICATIONS

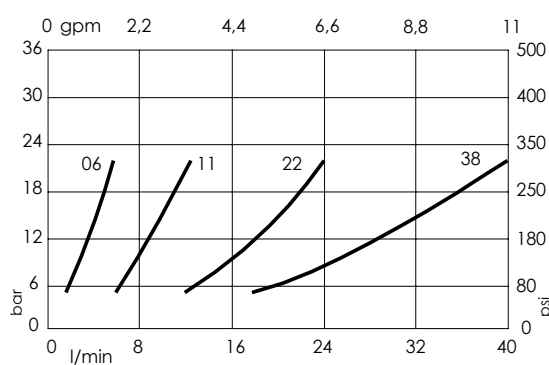
| | |
|----------------------------------|---------------------------------------|
| Max. operating pressure: | 210 bar (3000 psi) |
| Division or combination: | 50 % - 50 % |
| Manifold: | Aluminium |
| Weight: | 0,88 kg (1,94 lbs) |
| Cavity: | VP000242 |
| Contamination class to ISO 4406: | See technical spec. |
| MTTFd: | 150 - 1200 years: See technical spec. |

NOTES

Flow divider accuracy: $\pm 7/8\%$ between 40-100% of max. input flow.

For other configurations/quick codes not available in this catalogue page please consult factory

CURVES

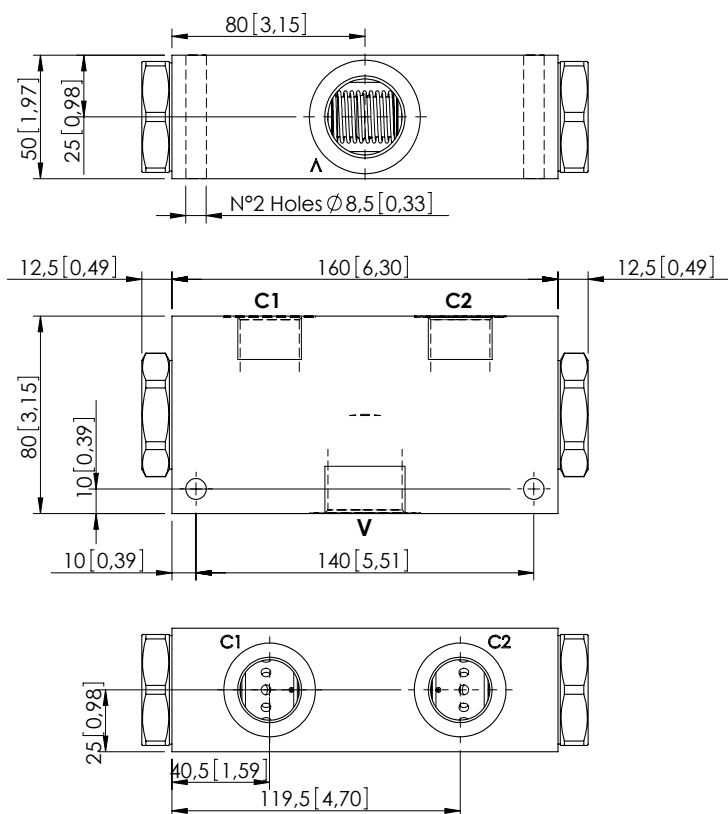


ORDERING CODES

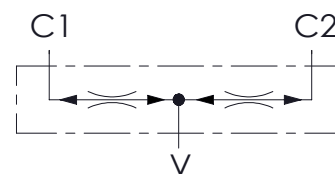
| Quick code | Description | Main ports size | Inlet range flow |
|------------|---------------------------|------------------------|-------------------------------|
| MF000076 | MFDT-040-BFTR-06-G38-N210 | V:G3/8" ; C1,C2:G 3/8" | 2,8 - 5,8 l/min (0,7-1,5 gpm) |
| MF000077 | MFDT-040-BFTR-11-G38-N210 | V:G3/8" ; C1,C2:G 3/8" | 6,5 - 11 l/min (2-3 gpm) |
| MF000078 | MFDT-040-BFTR-22-G38-N210 | V:G3/8" ; C1,C2:G 3/8" | 13 - 22 l/min (3,5-6 gpm) |
| MF000075 | MFDT-040-BFTR-38-G38-N210 | V:G3/8" ; C1,C2:G 3/8" | 25 - 38 l/min (7-10 gpm) |
| MF000080 | MFDT-040-BFTR-06-G12-N210 | V:G1/2" ; C1,C2:G 3/8" | 2,8 - 5,8 l/min (0,7-1,5 gpm) |
| MF000081 | MFDT-040-BFTR-11-G12-N210 | V:G1/2" ; C1,C2:G 3/8" | 6,5 - 11 l/min (2-3 gpm) |
| MF000082 | MFDT-040-BFTR-22-G12-N210 | V:G1/2" ; C1,C2:G 3/8" | 13 - 22 l/min (3,6-6 gpm) |
| MF000079 | MFDT-040-BFTR-38-G12-N210 | V:G1/2" ; C1,C2:G 3/8" | 25 - 38 l/min (7-10 gpm) |

Revision A1

MFDT-150-BFLR



Dimensions: mm [inches]



SPECIFICATIONS

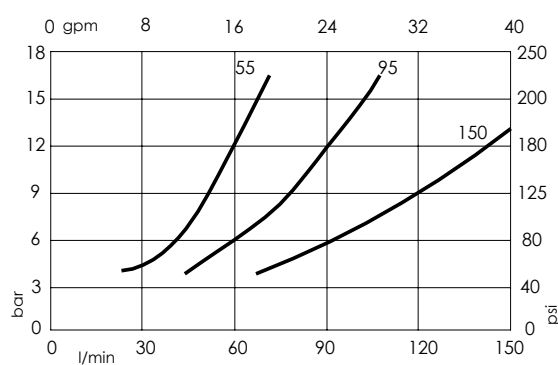
| | |
|----------------------------------|---------------------------------------|
| Max. operating pressure: | 210 bar (3000 psi) |
| Division or combination: | 50 %- 50 % |
| Manifold: | Aluminium |
| Weight: | 2,1 kg (4,63 lbs) |
| Contamination class to ISO 4406: | See technical spec. |
| MTTFd: | 150 - 1200 years: See technical spec. |

NOTES

Flow divider accuracy: $\pm 7/8\%$ between 40-100% of max. input flow.

For other configurations/quick codes not available in this catalogue page please consult factory

CURVES

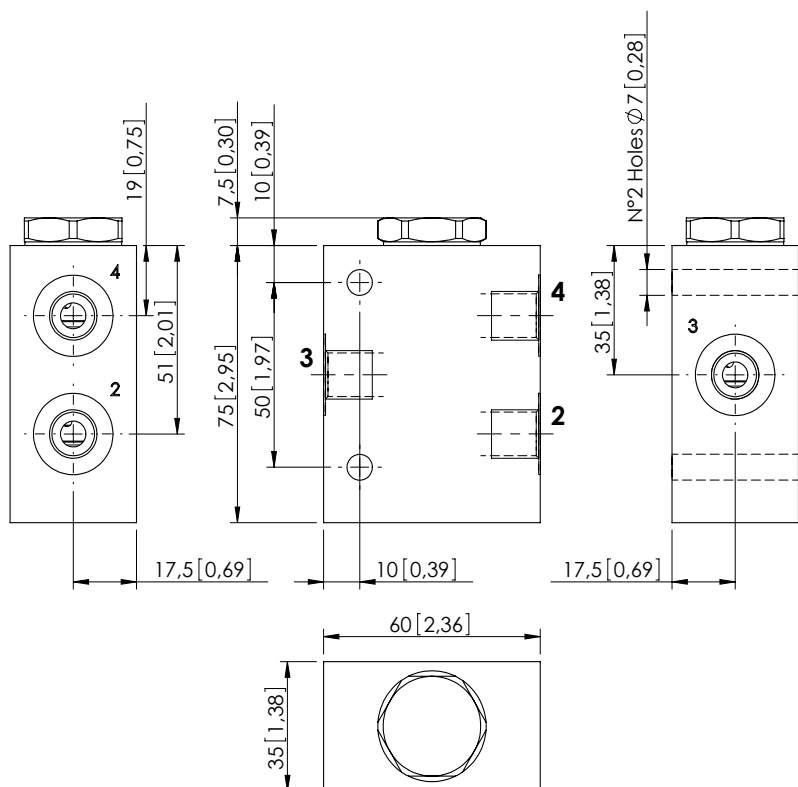


ORDERING CODES

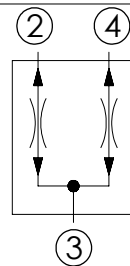
| Quick code | Description | Main ports size | Inlet range flow |
|------------|---------------------------|--------------------------|----------------------------|
| MF000117 | MFDT-150-BFLR-95-G10-N210 | V: G 1"; C1,C2: G 3/4" | 56 - 95 l/min (15-25 gpm) |
| MF000118 | MFDT-150-BFLR-15-G10-N210 | V: G 1"; C1,C2: G 3/4" | 90 - 150 l/min (24-40 gpm) |
| MF000122 | MFDT-150-BFLR-55-G34-N210 | V: G 3/4"; C1,C2: G 1/2" | 28 - 55 l/min (7.5-15 gpm) |
| MF000123 | MFDT-150-BFLR-95-G34-N210 | V: G 3/4"; C1,C2: G 1/2" | 56 - 95 l/min (15-25 gpm) |
| | | | |
| | | | |

Revision A1

KFDT-055-BFAR



Dimensions: mm [inches]



SPECIFICATIONS

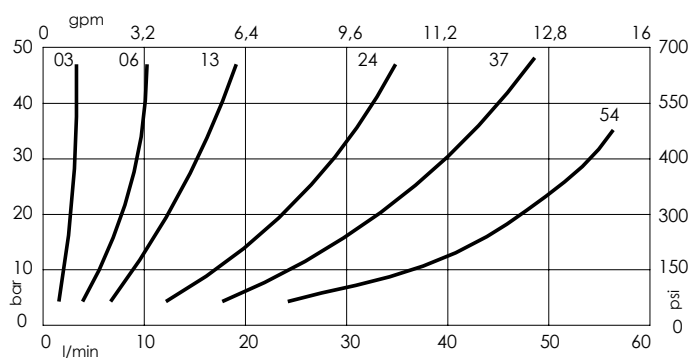
| | |
|----------------------------------|---------------------------------------|
| Max. operating pressure: | 210 bar (3000 psi) |
| Division or combination: | 50 %- 50 % |
| Manifold: | Aluminium |
| Weight: | 0,47 kg (1,01 lbs) |
| Cavity: | SAE-10-4N |
| Contamination class to ISO 4406: | See technical spec. |
| MTF _d : | 150 - 1200 years: See technical spec. |

NOTES

Flow divider accuracy: $\pm 7/8\%$ between 40-100% of max. input flow.

For other configurations/quick codes not available in this catalogue page please consult factory

CURVES



ORDERING CODES

| Quick code | Description | Main ports size | Inlet range flow |
|------------|-----------------------------|-----------------|---------------------------|
| KF000005 | KFDT-055-BFAR-03-G14-N210-L | 2,3,4 : G 1/4" | 1,2-3 l/min (0,3-0,8 gpm) |
| KF000006 | KFDT-055-BFAR-06-G14-N210-L | 2,3,4 : G 1/4" | 3-6 l/min (0,8-2 gpm) |
| KF000007 | KFDT-055-BFAR-13-G14-N210-L | 2,3,4 : G 1/4" | 6-13 l/min (2-3,4 gpm) |
| KF000010 | KFDT-055-BFAR-13-G38-N210-L | 2,3,4 : G 3/8" | 6-13 l/min (2-3,4 gpm) |
| KF000011 | KFDT-055-BFAR-24-G38-N210-L | 2,3,4 : G 3/8" | 10-24 l/min (3-6 gpm) |
| KF000012 | KFDT-055-BFAR-37-G38-N210-L | 2,3,4 : G 3/8" | 15-37 l/min (4-10 gpm) |
| KF000009 | KFDT-055-BFAR-37-G12-N210-L | 2,3,4 : G 1/2" | 15-37 l/min (4-10 gpm) |
| KF000008 | KFDT-055-BFAR-44-G12-N210-L | 2,3,4 : G 1/2" | 18-44 l/min (5-12 gpm) |
| KF000004 | KFDT-055-BFAR-54-G12-N210-L | 2,3,4 : G 1/2" | 22-54 l/min (6-14 gpm) |

Revision A1