

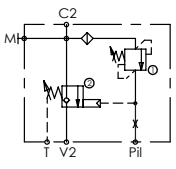
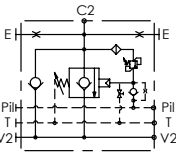
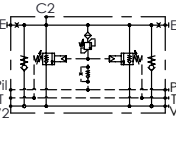
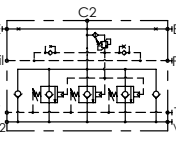
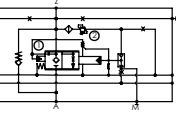


ATLANTIC
Fluid Tech

SECTION 10

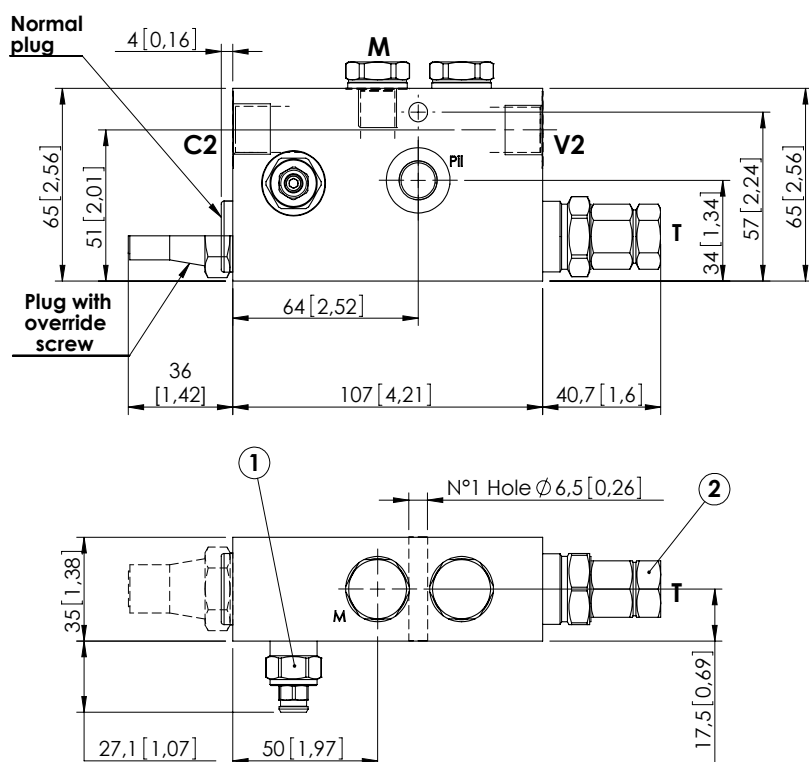
Check and
Metering
Valves

CHECK AND METERING VALVES

Hydraulic scheme	Valve description	Valve type	Rated flow l/min (gpm)	Max. pressure bar (psi)	Installation	Main port size or cavity type	Page
	MLST-040-ALGR	Right version	40 (11)	420 (6000)	In line	G 3/8"	10.01. 010
	MLST-040-ALGL	Left version	40 (11)	420 (6000)	In line	G 3/8"	10.01. 020
	MLST-100-ALGR	Right version	100 (26)	420 (6000)	In line	G 1/2"	10.01. 030
	MLST-100-ALGL	Left version	100 (26)	420 (6000)	In line	G 1/2"	10.01. 040
	MLST-150-ALGR	Right version	150 (40)	420 (6000)	In line	G 3/4"	10.01. 050
	MLST-150-ALGL	Left version	150 (40)	420 (6000)	In line	G 3/4"	10.01. 060
	MLLT-100-AAGN	Right and left version	100 (26)	420 (6000)	Flanged	1/2" SAE 6000	10.02. 070
	MLLT-150-AAGN	Right and left version	150 (40)	420 (6000)	Flanged	1/2" SAE 6000	10.02. 080
	MLLT-200-AAGR	Right and left version	250 (66)	420 (6000)	Flanged	3/4" SAE 6000	10.02. 090
	MLLT-200-AAGR	Right and left version	250 (66)	420 (6000)	Flanged	1" SAE 6000	10.02. 100
	MLLT-300-AAGR	Right and left version	350 (93)	420 (6000)	Flanged	3/4" SAE 6000	10.02. 110
	MLLT-300-AAGR	Right and left version	400 (106)	420 (6000)	Flanged	1" SAE 6000	10.02. 120
	MLLT-500-AAJN	Right and left version	500 (132)	420 (6000)	Flanged	3/4" SAE 6000	10.03. 140
	MLLT-500-AAGN	Right and left version	500 (132)	420 (6000)	Flanged	1" SAE 6000	10.03. 150
	MLLT-550-AAGN	Right and left version	550 (146)	420 (6000)	Flanged	1 1/4" SAE 6000	10.03. 160
	MLLT-700-AAGN	Right and left version	700 (185)	420 (6000)	Flanged	1 1/4" SAE 6000	10.03. 170
	MLLT-700-AAGN	Right and left version	700 (185)	420 (6000)	Flanged	1 1/2" SAE 6000	10.03. 180
	MLLT-1400-AAGN	Right and left version	1400 (370)	420 (6000)	Flanged	1 1/2" SAE 6000	10.04. 190
	MLLT-1400-AAGR	Right version	1400 (370)	420 (6000)	Flanged	2" SAE 6000	10.04. 200
	MLLT-1400-AAGL	Left version	1400 (370)	420 (6000)	Flanged	2" SAE 6000	10.04. 210
	MLLT-1500-AAGR	Right version	1500 (396)	420 (6000)	Flanged	2" SAE 6000 3" SAE 6000	10.04. 220
	MLLT-1500-AAGL	Left version	1500 (396)	420 (6000)	Flanged	2" SAE 6000 3" SAE 6000	10.04. 230
	MLNT-250-AAGN	Right and left version	250 (66)	420 (6000)	Flanged	3/4" SAE 6000	10.05. 240
	MLNT-350-AAGN	Right and left version	350 (93)	420 (6000)	Flanged	1" SAE 6000	10.05. 250
	MLNT-500-AAGN	Right and left version	500 (132)	420 (6000)	Flanged	1 1/4" SAE 6000	10.05. 260

CHECK AND METERING VALVE

MLST-040-ALGR

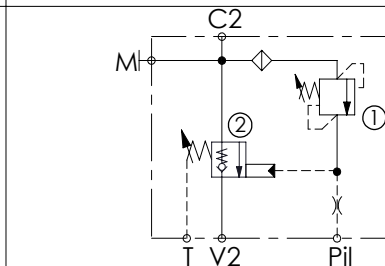
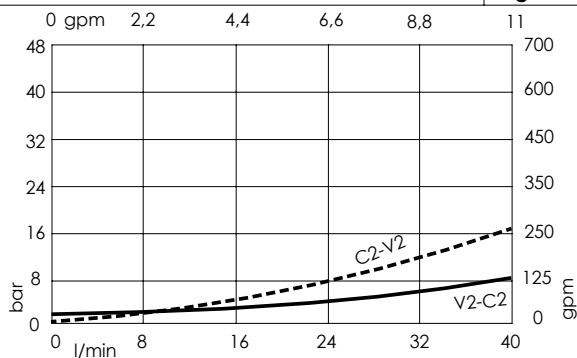
IN LINE VERSION
RIGHT VERSION

Dimensions: mm [inches]

NOTES

When correctly adjusted for the specific excavator installation, these valves meet the requirement of ISO 8643.
For other configurations/quick codes not available in this catalogue page please consult factory

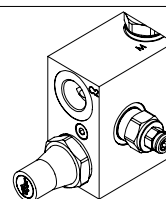
CURVES



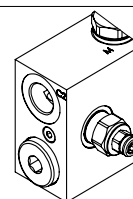
SPECIFICATIONS

Max. operating pressure:	420 bar (6000 psi)
Rated flow:	40 l/min (11 gpm)
Manifold:	Steel
Weight:	1,86 kg (4,1 lbs)
Contamination class to ISO 4406:	See technical spec.
MTTFd:	150 - 1200 years: See technical spec.

OPTIONS



Plug with override screw



Normal plug

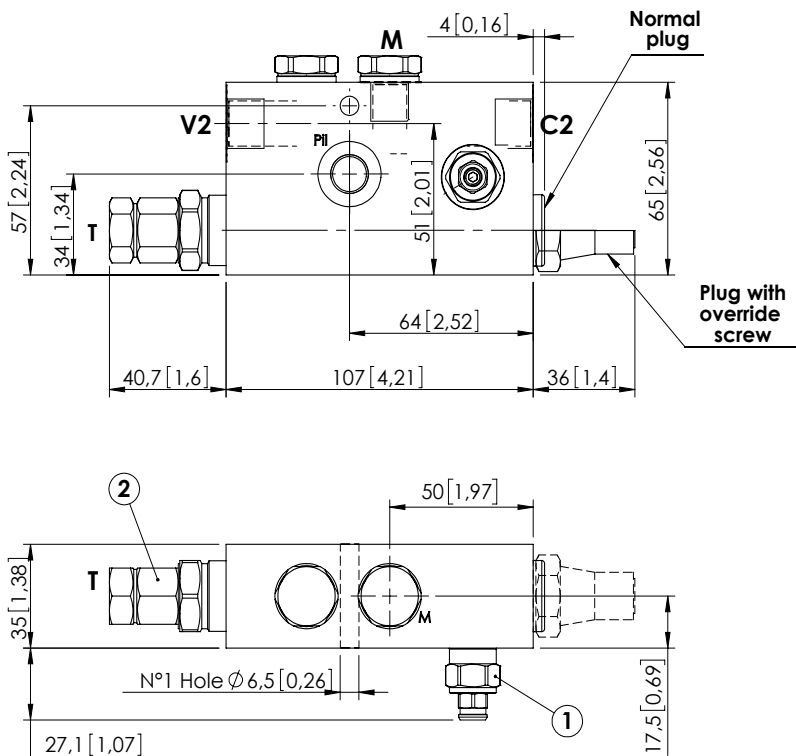
ORDERING CODES

Quick code	Description	Main ports size	Plug with override screw	Standard setting	Adjustment range	Pressure increase
ML000143	MLST-040-ALGR-00-G38-N420	V2,C2: G 3/8" P11,T,M: G 1/4"	No	① 350 bar @5 l/min (5000 psi @1,3 gpm) ② 7.5 bar (100 psi) Crack. pr.	① 150-420 bar (2100-6000 psi) ② 3-15 bar (50-200 psi)	① 236 bar/turn (3400 psi/turn) ② 6.7 bar/turn (100 psi/turn)
ML000144	MLST-040-ALGR-00-G38-E420	V2,C2: G 3/8" P11,T,M: G 1/4"	Yes	① 350 bar @5 l/min (5000 psi @1,3 gpm) ② 7.5 bar (100 psi) Crack. pr.	① 150-420 bar (2100-6000 psi) ② 3-15 bar (50-200 psi)	① 236 bar/turn (3400 psi/turn) ② 6.7 bar/turn (100 psi/turn)
ML000185	MLST-040-ALJR-00-J38-N420	V2,C2: JIS 3/8" P11,T,M: JIS 1/4"	No	① 350 bar @5 l/min (5000 psi @1,3 gpm) ② 7.5 bar (100 psi) Crack. pr.	① 150-420 bar (2100-6000 psi) ② 3-15 bar (50-200 psi)	① 236 bar/turn (3400 psi/turn) ② 6.7 bar/turn (100 psi/turn)
ML000186	MLST-040-ALJR-00-J38-E420	V2,C2: JIS 3/8" P11,T,M: JIS 1/4"	Yes	① 350 bar @5 l/min (5000 psi @1,3 gpm) ② 7.5 bar (100 psi) Crack. pr.	① 150-420 bar (2100-6000 psi) ② 3-15 bar (50-200 psi)	① 236 bar/turn (3400 psi/turn) ② 6.7 bar/turn (100 psi/turn)

Revision B1

CHECK AND METERING VALVE

MLST-040-ALGL

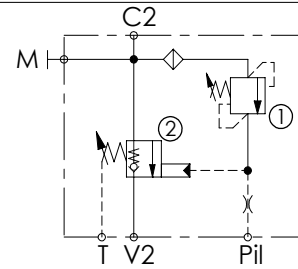
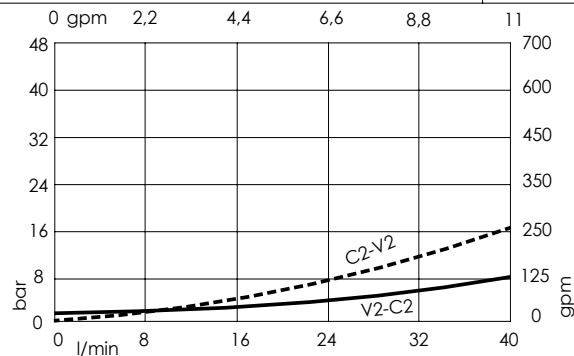
IN LINE VERSION
LEFT VERSION

Dimensions: mm [inches]

NOTES

When correctly adjusted for the specific excavator installation, these valves meet the requirement of ISO 8643.
For other configurations/quick codes not available in this catalogue page please consult factory

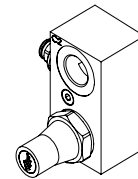
CURVES



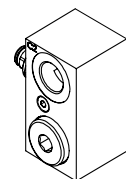
SPECIFICATIONS

Max. operating pressure:	420 bar (6000 psi)
Rated flow:	40 l/min (11 gpm)
Manifold:	Steel
Weight:	1,86 kg (4,1 lbs)
Contamination class to ISO 4406:	See technical spec.
MTTFd:	150 - 1200 years: See technical spec.

OPTIONS



Plug with override screw



Normal plug

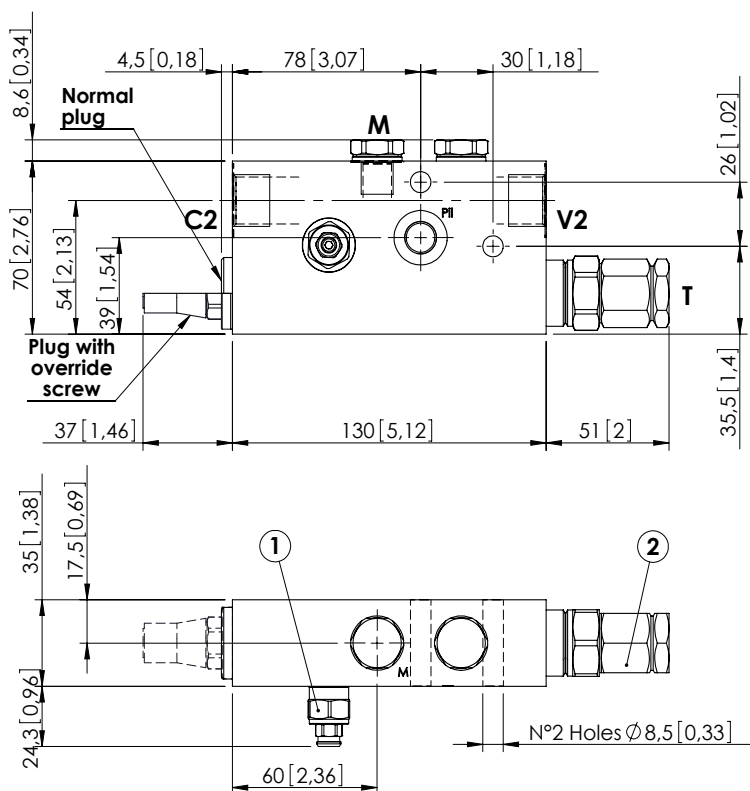
ORDERING CODES

Quick code	Description	Main ports size	Plug with override screw	Standard setting	Adjustment range	Pressure increase
ML000145	MLST-040-ALGL-00-G38-N420	V2,C2: G 3/8" Pil,T,M: G 1/4"	No	① 350 bar @5 l/min (5000 psi @1,3 gpm) ② 7.5 bar (100 psi) Crack. pr.	① 150-420 bar (2100-6000 psi) ② 3-15 bar (50-200 psi)	① 236 bar/turn (3400 psi/turn) ② 6.7 bar/turn (100 psi/turn)
ML000146	MLST-040-ALGL-00-G38-E420	V2,C2: G 3/8" Pil,T,M: G 1/4"	Yes	① 350 bar @5 l/min (5000 psi @1,3 gpm) ② 7.5 bar (100 psi) Crack. pr.	① 150-420 bar (2100-6000 psi) ② 3-15 bar (50-200 psi)	① 236 bar/turn (3400 psi/turn) ② 6.7 bar/turn (100 psi/turn)
ML000187	MLST-040-ALJL-00-J38-N420	V2,C2: JIS 3/8" Pil,T,M: JIS 1/4"	No	① 350 bar @5 l/min (5000 psi @1,3 gpm) ② 7.5 bar (100 psi) Crack. pr.	① 150-420 bar (2100-6000 psi) ② 3-15 bar (50-200 psi)	① 236 bar/turn (3400 psi/turn) ② 6.7 bar/turn (100 psi/turn)
ML000188	MLST-040-ALJL-00-J38-E420	V2,C2: JIS 3/8" Pil,T,M: JIS 1/4"	Yes	① 350 bar @5 l/min (5000 psi @1,3 gpm) ② 7.5 bar (100 psi) Crack. pr.	① 150-420 bar (2100-6000 psi) ② 3-15 bar (50-200 psi)	① 236 bar/turn (3400 psi/turn) ② 6.7 bar/turn (100 psi/turn)

Revision B1

CHECK AND METERING VALVE

MLST-100-ALGR

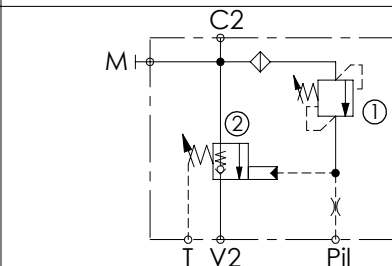
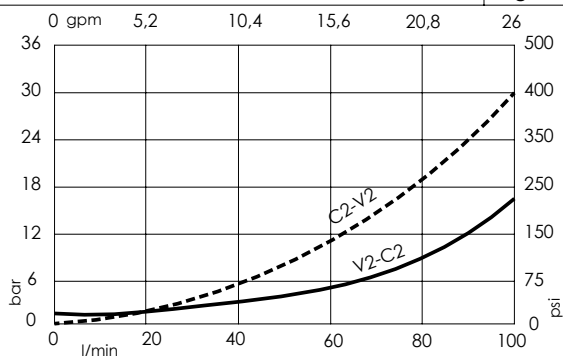
IN LINE VERSION
RIGHT VERSION

Dimensions: mm [inches]

NOTES

When correctly adjusted for the specific excavator installation, these valves meet the requirement of ISO 8643.
For other configurations/quick codes not available in this catalogue page please consult factory

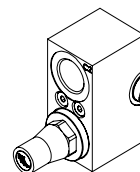
CURVES



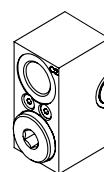
SPECIFICATIONS

Max. operating pressure:	420 bar (6000 psi)
Rated flow:	100 l/min (26 gpm)
Manifold:	Steel
Weight:	2,41 kg (5,27 lbs)
Contamination class to ISO 4406:	See technical spec.
MTF _d :	150 - 1200 years: See technical spec.

OPTIONS



Plug with override screw



Normal plug

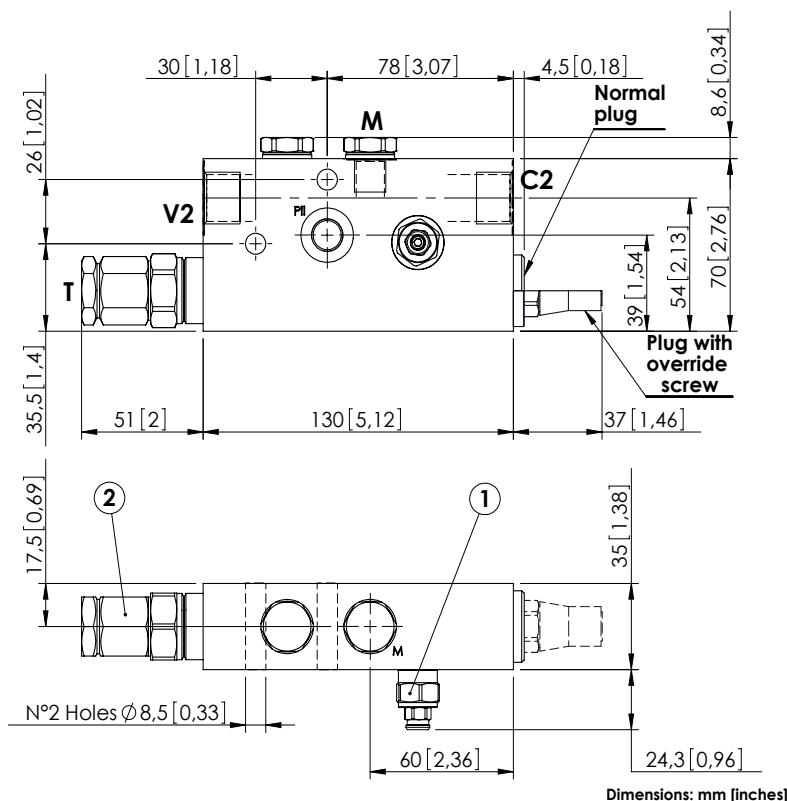
ORDERING CODES

Quick code	Description	Main ports size	Plug with override screw	Standard setting	Adjustment range	Pressure increase
ML000134	MLST-100-ALGR-00-G12-N420	V2,C2: G 1/2" P1, T, M: G 1/4"	No	① 350 bar @5 l/min (5000 psi @1,3 gpm) ② 7.5 bar (100 psi) Crack. pr.	① 150-420 bar (2100-6000 psi) ② 3-15 bar (50-200 psi)	① 236 bar/turn (3400 psi/turn) ② 7 bar/turn (100 psi/turn)
ML000147	MLST-100-ALGR-00-G12-E420	V2,C2: G 1/2" P1, T, M: G 1/4"	Yes	① 350 bar @5 l/min (5000 psi @1,3 gpm) ② 7.5 bar (100 psi) Crack. pr.	① 150-420 bar (2100-6000 psi) ② 3-15 bar (50-200 psi)	① 236 bar/turn (3400 psi/turn) ② 7 bar/turn (100 psi/turn)
ML000135	MLST-100-ALGR-00-J12-N420	V2,C2: JIS 1/2" P1, T, M: JIS 1/4"	No	① 350 bar @5 l/min (5000 psi @1,3 gpm) ② 7.5 bar (100 psi) Crack. pr.	① 150-420 bar (2100-6000 psi) ② 3-15 bar (50-200 psi)	① 236 bar/turn (3400 psi/turn) ② 7 bar/turn (100 psi/turn)
ML000148	MLST-100-ALGR-00-J12-E420	V2,C2: JIS 1/2" P1, T, M: JIS 1/4"	Yes	① 350 bar @5 l/min (5000 psi @1,3 gpm) ② 7.5 bar (100 psi) Crack. pr.	① 150-420 bar (2100-6000 psi) ② 3-15 bar (50-200 psi)	① 236 bar/turn (3400 psi/turn) ② 7 bar/turn (100 psi/turn)

Revision E1

CHECK AND METERING VALVE

MLST-100-ALGL

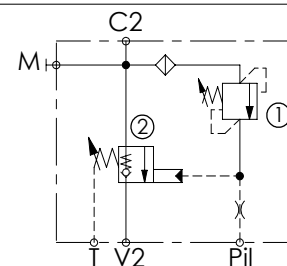
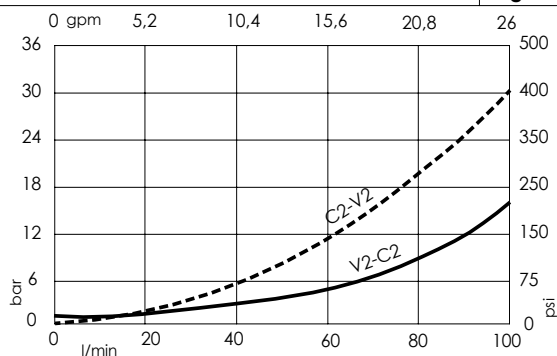
IN LINE VERSION
LEFT VERSION

Dimensions: mm [inches]

NOTES

When correctly adjusted for the specific excavator installation, these valves meet the requirement of ISO 8643.
For other configurations/quick codes not available in this catalogue page please consult factory

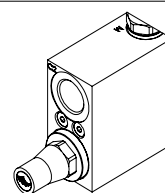
CURVES



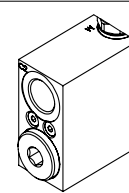
SPECIFICATIONS

Max. operating pressure:	420 bar (6000 psi)
Rated flow:	100 l/min (26 gpm)
Manifold:	Steel
Weight:	2,41 kg (5,27 lbs)
Contamination class to ISO 4406:	See technical spec.
MTTFd:	150 - 1200 years: See technical spec.

OPTIONS



Plug with override screw



Normal plug

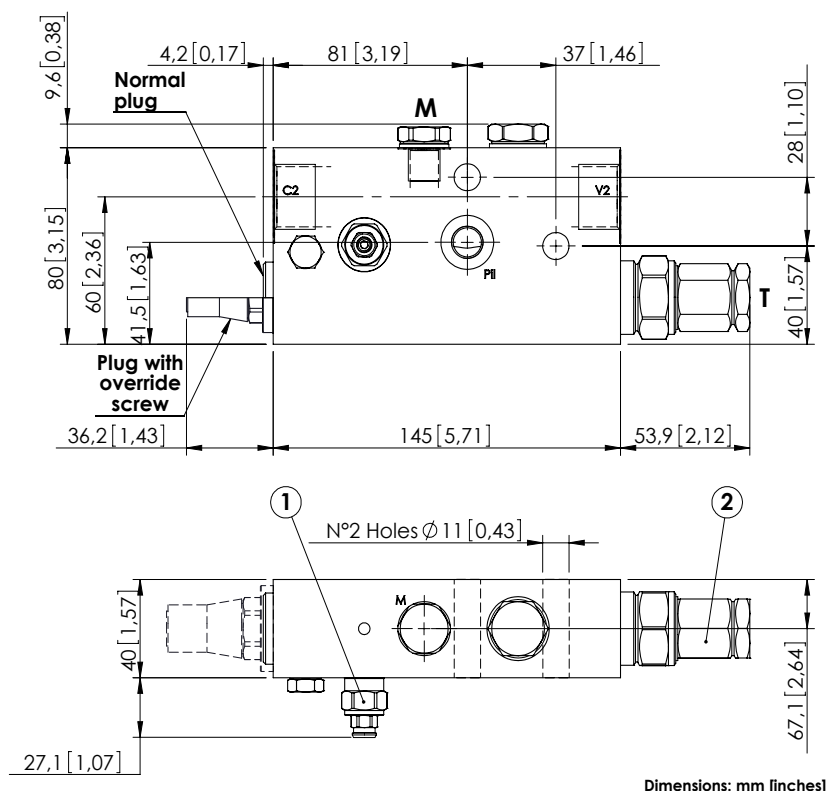
ORDERING CODES

Quick code	Description	Main ports size	Plug with override screw	Standard setting	Adjustment range	Pressure increase
ML000136	MLST-100-ALGL-00-G12-N420	V2,C2: G 1/2" Pi, T, M: G 1/4"	No	① 350 bar @5 l/min (5000 psi @1,3 gpm) ② 7.5 bar (100 psi) Crack. pr.	① 150-420 bar (2100-6000 psi) ② 3-15 bar (50-200 psi)	① 236 bar/turn (3400 psi/turn) ② 7 bar/turn (100 psi/turn)
ML000149	MLST-100-ALGL-00-G12-E420	V2,C2: G 1/2" Pi, T, M: G 1/4"	Yes	① 350 bar @5 l/min (5000 psi @1,3 gpm) ② 7.5 bar (100 psi) Crack. pr.	① 150-420 bar (2100-6000 psi) ② 3-15 bar (50-200 psi)	① 236 bar/turn (3400 psi/turn) ② 7 bar/turn (100 psi/turn)
ML000137	MLST-100-ALGL-00-J12-N420	V2,C2: JIS 1/2" Pi, T, M: JIS 1/4"	No	① 350 bar @5 l/min (5000 psi @1,3 gpm) ② 7.5 bar (100 psi) Crack. pr.	① 150-420 bar (2100-6000 psi) ② 3-15 bar (50-200 psi)	① 236 bar/turn (3400 psi/turn) ② 7 bar/turn (100 psi/turn)
ML000150	MLST-100-ALGL-00-J12-E420	V2,C2: JIS 1/2" Pi, T, M: JIS 1/4"	Yes	① 350 bar @5 l/min (5000 psi @1,3 gpm) ② 7.5 bar (100 psi) Crack. pr.	① 150-420 bar (2100-6000 psi) ② 3-15 bar (50-200 psi)	① 236 bar/turn (3400 psi/turn) ② 7 bar/turn (100 psi/turn)

Revision E1

CHECK AND METERING VALVE

MLST-150-ALGR

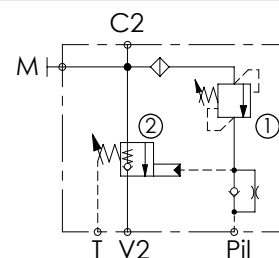
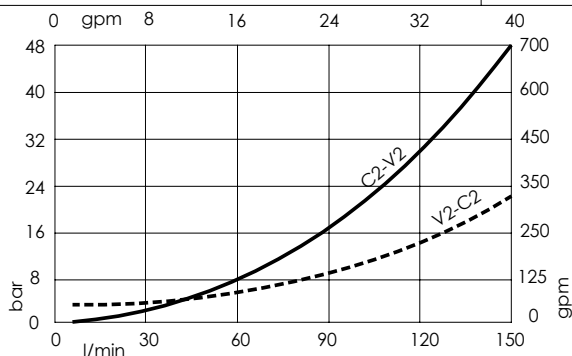
IN LINE VERSION
RIGHT VERSION

Dimensions: mm [inches]

NOTES

When correctly adjusted for the specific excavator installation, these valves meet the requirement of ISO 8643.
For other configurations/quick codes not available in this catalogue page please consult factory

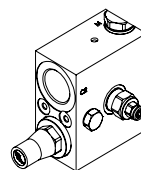
CURVES



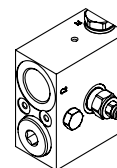
SPECIFICATIONS

Max. operating pressure:	420 bar (6000 psi)
Rated flow:	150 l/min (40 gpm)
Manifold:	Steel
Weight:	3,35 kg (7,39 lbs)
Contamination class to ISO 4406:	See technical spec.
MTF _d :	150 - 1200 years: See technical spec.

OPTIONS



Plug with override screw



Normal plug

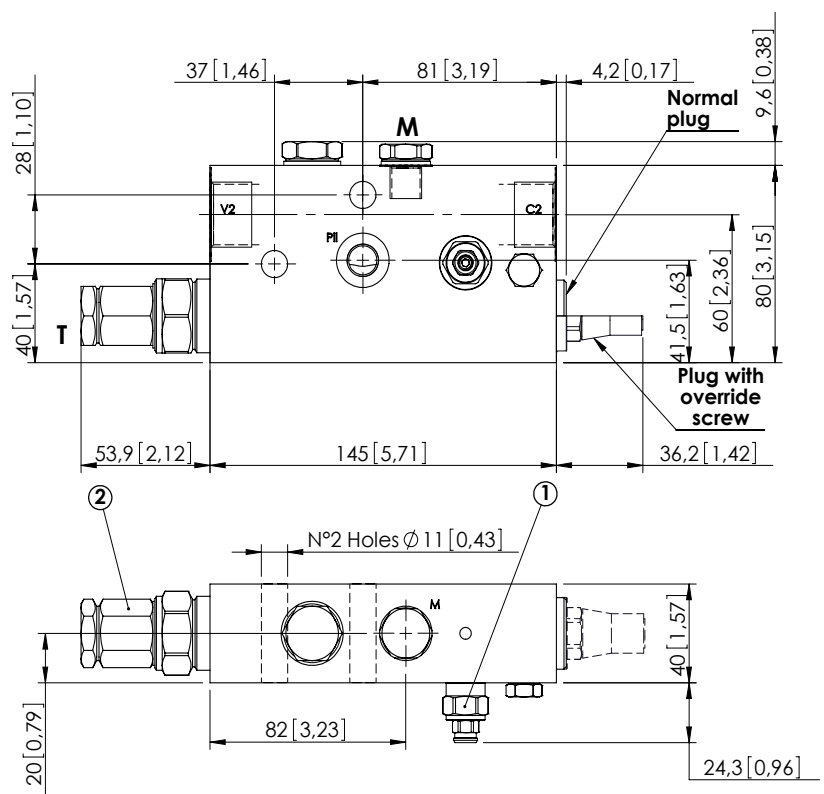
ORDERING CODES

Quick code	Description	Main ports size	Plug with override screw	Standard setting	Adjustment range	Pressure increase
ML000126	MLST-150-ALGR-00-G34-N420	V2,C2: G 3/4" Pil,T,M: G 1/4"	No	① 350 bar @5 l/min (5000 psi @1,3 gpm) ② 7.5 bar (100 psi) Crack. pr.	① 150-420 bar (2100-6000 psi) ② 3-15 bar (50-200 psi)	① 236 bar/turn (3400 psi/turn) ② 8 bar/turn (100 psi/turn)
ML000011	MLST-150-ALGR-00-G34-E420	V2,C2: G 3/4" Pil,T,M: G 1/4"	Yes	① 350 bar @5 l/min (5000 psi @1,3 gpm) ② 7.5 bar (100 psi) Crack. pr.	① 150-420 bar (2100-6000 psi) ② 3-15 bar (50-200 psi)	① 236 bar/turn (3400 psi/turn) ② 8 bar/turn (100 psi/turn)
ML000122	MLST-150-ALGR-00-U11-N420	V2,C2: 1 1/16-12 UNF Pil,T: 9/16-18 UNF M: G 1/4"	No	① 350 bar @5 l/min (5000 psi @1,3 gpm) ② 7.5 bar (100 psi) Crack. pr.	① 150-420 bar (2100-6000 psi) ② 3-15 bar (50-200 psi)	① 236 bar/turn (3400 psi/turn) ② 8 bar/turn (100 psi/turn)
ML000029	MLST-150-ALGR-00-U11-E420	V2,C2: 1 1/16-12 UNF Pil,T: 9/16-18 UNF M: G 1/4"	Yes	① 350 bar @5 l/min (5000 psi @1,3 gpm) ② 7.5 bar (100 psi) Crack. pr.	① 150-420 bar (2100-6000 psi) ② 3-15 bar (50-200 psi)	① 236 bar/turn (3400 psi/turn) ② 8 bar/turn (100 psi/turn)
ML000123	MLST-150-ALGR-00-J34-N420	V2,C2: 3/4" JIS Pil,T,M: 1/4" JIS	No	① 350 bar @5 l/min (5000 psi @1,3 gpm) ② 7.5 bar (100 psi) Crack. pr.	① 150-420 bar (2100-6000 psi) ② 3-15 bar (50-200 psi)	① 236 bar/turn (3400 psi/turn) ② 7 bar/turn (100 psi/turn)
ML000105	MLST-150-ALGR-00-J34-E420	V2,C2: 3/4" JIS Pil,T,M: 1/4" JIS	Yes	① 350 bar @5 l/min (5000 psi @1,3 gpm) ② 7.5 bar (100 psi) Crack. pr.	① 150-420 bar (2100-6000 psi) ② 3-15 bar (50-200 psi)	① 236 bar/turn (3400 psi/turn) ② 7 bar/turn (100 psi/turn)

Revision B1

CHECK AND METERING VALVE

MLST-150-ALGL

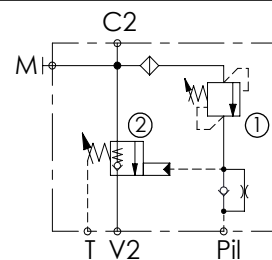
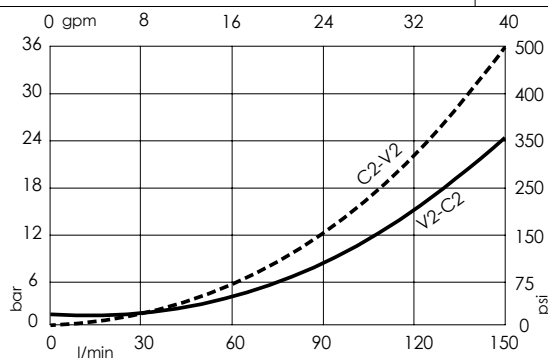
IN LINE VERSION
LEFT VERSION

Dimensions: mm [inches]

NOTES

When correctly adjusted for the specific excavator installation, these valves meet the requirement of ISO 8643.
For other configurations/quick codes not available in this catalogue page please consult factory

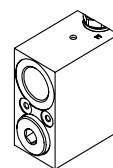
CURVES



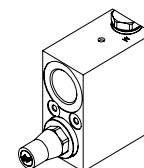
SPECIFICATIONS

Max. operating pressure:	420 bar (6000 psi)
Rated flow:	150 l/min (40 gpm)
Manifold:	Steel
Weight:	3,35 kg (7,39 lbs)
Contamination class to ISO 4406:	See technical spec.
MTTFd:	150 - 1200 years: See technical spec.

OPTIONS



Normal plug



Plug with override screw

ORDERING CODES

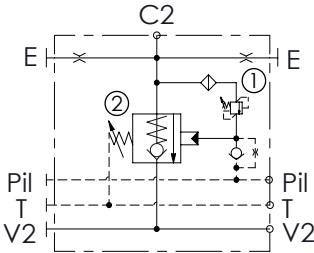
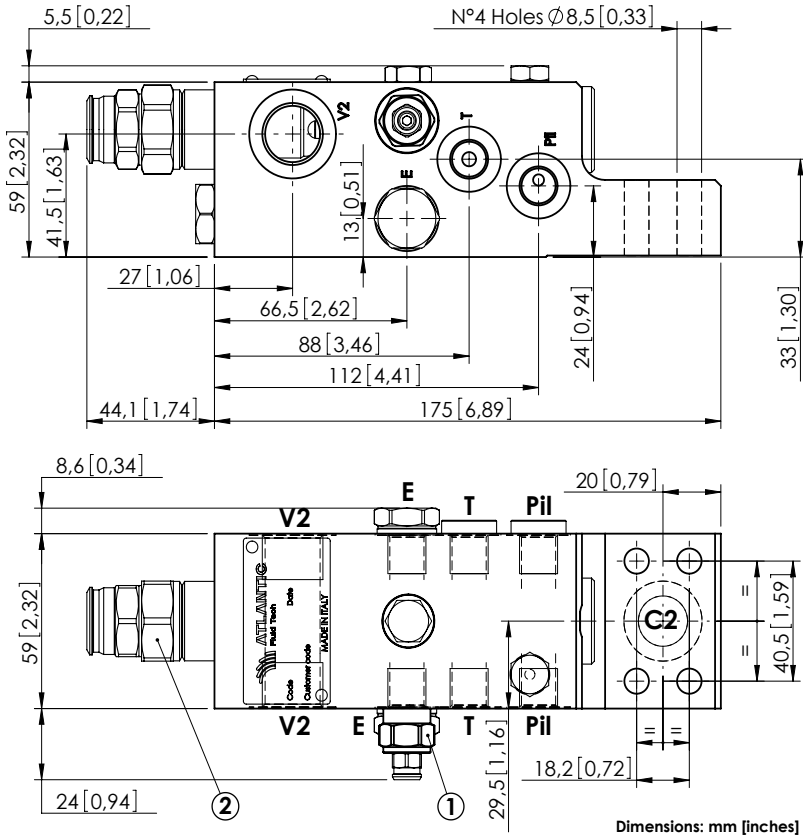
Quick code	Description	Main ports size	Plug with override screw	Standard setting	Adjustment range	Pressure increase
ML000121	MLST-150-ALGL-00-G34-N420	V2,C2: G 3/4" Pil,T,M: G 1/4"	No	① 350 bar @5 l/min (5000 psi @1,3 gpm) ② 7.5 bar (100 psi) Crack. pr.	① 150-420 bar (2100-6000 psi) ② 3-15 bar (50-200 psi)	① 236 bar/turn (3400 psi/turn) ② 8 bar/turn (100 psi/turn)
ML000010	MLST-150-ALGL-00-G34-E420	V2,C2: G 3/4" Pil,T,M: G 1/4"	Yes	① 350 bar @5 l/min (5000 psi @1,3 gpm) ② 7.5 bar (100 psi) Crack. pr.	① 150-420 bar (2100-6000 psi) ② 3-15 bar (50-200 psi)	① 236 bar/turn (3400 psi/turn) ② 8 bar/turn (100 psi/turn)
ML000124	MLST-150-ALGL-00-U11-N420	V2,C2: 1 1/16-12 UNF Pil,T: 9/16-18 UNF M: G 1/4"	No	① 350 bar @5 l/min (5000 psi @1,3 gpm) ② 7.5 bar (100 psi) Crack. pr.	① 150-420 bar (2100-6000 psi) ② 3-15 bar (50-200 psi)	① 236 bar/turn (3400 psi/turn) ② 8 bar/turn (100 psi/turn)
ML000030	MLST-150-ALGL-00-U11-E420	V2,C2: 1 1/16-12 UNF Pil,T: 9/16-18 UNF M: G 1/4"	Yes	① 350 bar @5 l/min (5000 psi @1,3 gpm) ② 7.5 bar (100 psi) Crack. pr.	① 150-420 bar (2100-6000 psi) ② 3-15 bar (50-200 psi)	① 236 bar/turn (3400 psi/turn) ② 8 bar/turn (100 psi/turn)
ML000125	MLST-150-ALGL-00-J34-N420	V2,C2: 3/4" JIS Pil,T,M: 1/4" JIS	No	① 350 bar @5 l/min (5000 psi @1,3 gpm) ② 7.5 bar (100 psi) Crack. pr.	① 150-420 bar (2100-6000 psi) ② 3-15 bar (50-200 psi)	① 236 bar/turn (3400 psi/turn) ② 8 bar/turn (100 psi/turn)
ML000104	MLST-150-ALGL-00-J34-E420	V2,C2: 3/4" JIS Pil,T,M: 1/4" JIS	Yes	① 350 bar @5 l/min (5000 psi @1,3 gpm) ② 7.5 bar (100 psi) Crack. pr.	① 150-420 bar (2100-6000 psi) ② 3-15 bar (50-200 psi)	① 236 bar/turn (3400 psi/turn) ② 8 bar/turn (100 psi/turn)

Revision B1

CHECK AND METERING VALVE

MLLT-100-AAGN

FLANGED TYPE
1/2" SAE 6000



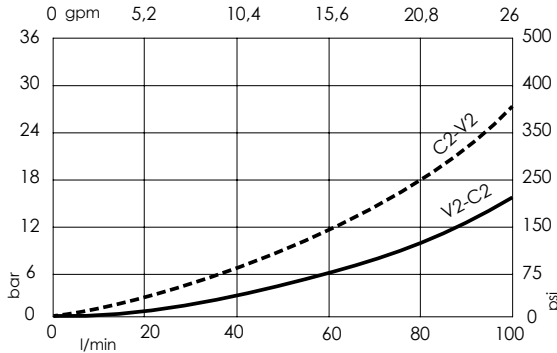
SPECIFICATIONS

Max. operating pressure:	420 bar (6000 psi)
Rated flow:	100 l/min (26 gpm)
Manifold:	Steel
Weight:	3.87 kg (8.53 lbs)
Contamination class to ISO 4406:	See technical spec.
MTTFd:	150 - 1200 years: See technical spec.

NOTES

When correctly adjusted for the specific excavator installation, these valves meet the requirement of ISO 8643.
For other configurations/quick codes not available in this catalogue page please consult factory

CURVES



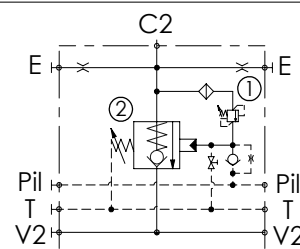
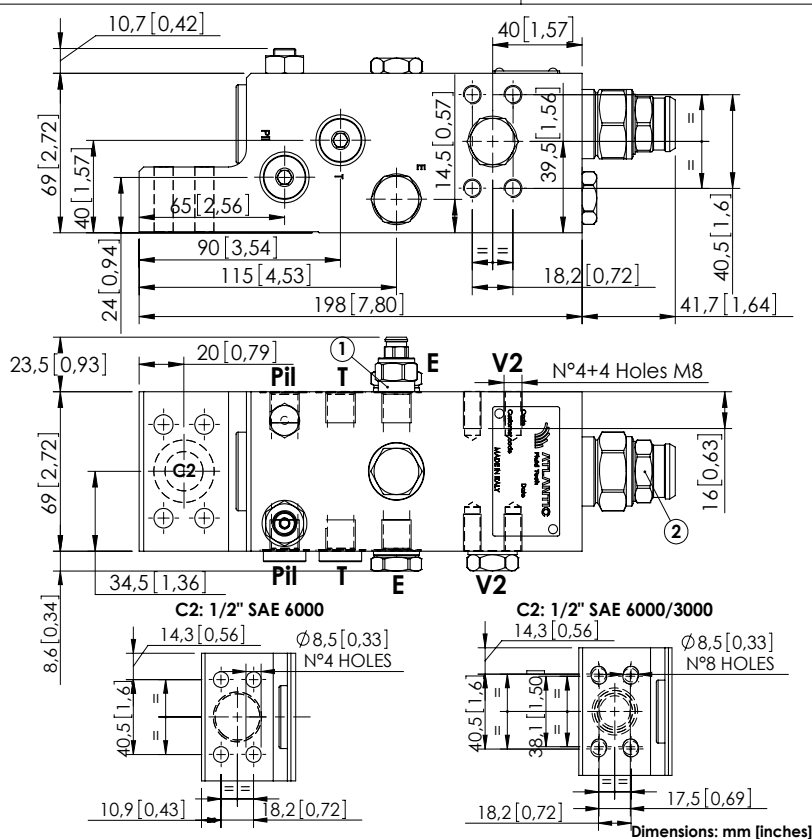
ORDERING CODES

Quick code	Description	Main ports size	Standard setting	Adjustment range	Pressure increase
ML000130	MLLT-100-AAGN-00-S12-N420	C2: 1/2" SAE 6000 V2 : G 1/2" E,Pil,T: G 1/4	① 350 bar @5 l/min (5000 psi @1.3 gpm) ② 7.5 bar (100 psi) Crack. pr.	① 150-420 bar (2100-6000 psi) ② 3-15 bar (50-200 psi)	① 236 bar/turn (3400 psi/turn) ② 6 bar/turn (85 psi/turn)

CHECK AND METERING VALVE

MLLT-150-AAGN

FLANGED TYPE
1/2" SAE 6000



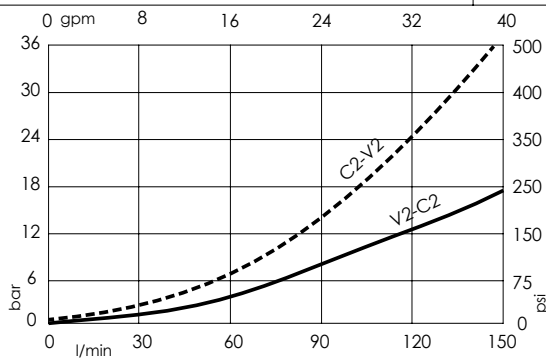
SPECIFICATIONS

Max. operating pressure:	420 bar (6000 psi)
Rated flow:	150 l/min (40 gpm)
Manifold:	Steel
Weight:	6,09 kg (13,43 lbs)
Contamination class to ISO 4406: See technical spec.	
MTTF _d :	150 - 1200 years: See technical spec.

NOTES

When correctly adjusted for the specific excavator installation, these valves meet the requirement of ISO 8643.
For other configurations/quick codes not available in this catalogue page please consult factory

CURVES



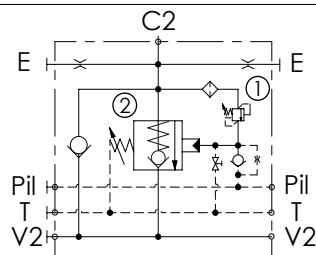
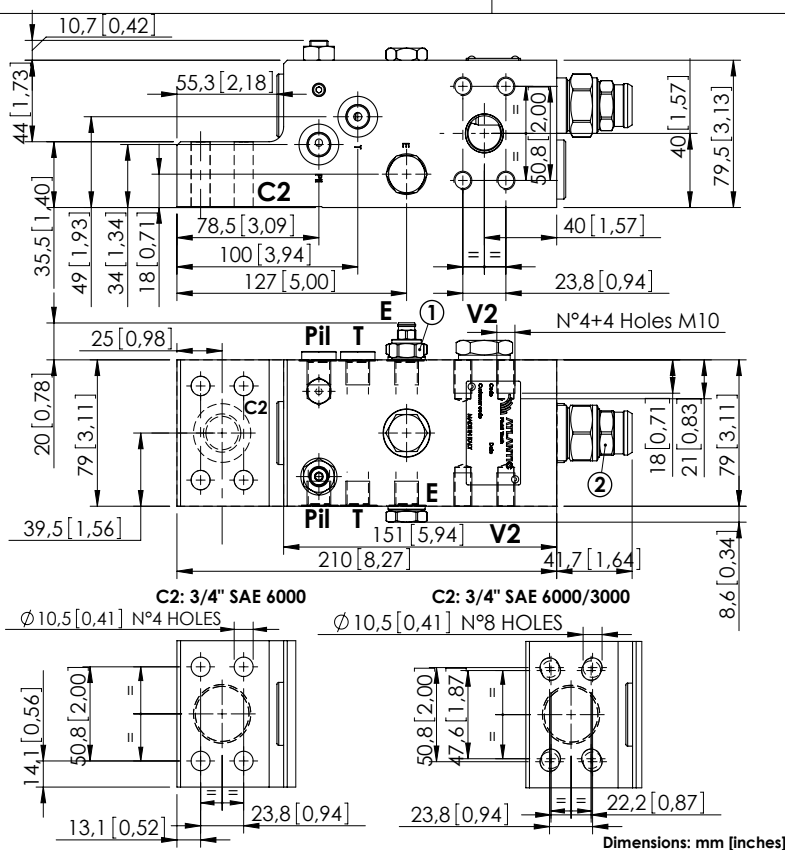
ORDERING CODES

Quick code	Description	Main ports size	Standard setting	Adjustment range	Pressure increase
ML000082	MLLT-150-AAGN-00-S12-N420	V2,C2: 1/2" SAE 6000 E,Pil,T: G 1/4"	① 350 bar @5 l/min (5000 psi @1,3 gpm) ② 7.5 bar (100 psi) Crack. pr.	① 150-420 bar (2100-6000 psi) ② 3-15 bar (50-200 psi)	① 236 bar/turn (3400 psi/turn) ② 5 bar/turn (70 psi/turn)
ML000083	MLLT-150-ASGN-00-S12-N420	C2: 1/2" SAE 6000/3000 V2: 1/2" SAE 6000 E,Pil,T: G 1/4"	① 350 bar @5 l/min (5000 psi @1,3 gpm) ② 7.5 bar (100 psi) Crack. pr.	① 150-420 bar (2100-6000 psi) ② 3-15 bar (50-200 psi)	① 236 bar/turn (3400 psi/turn) ② 5 bar/turn (70 psi/turn)

CHECK AND METERING VALVE

MLLT-200-AAGR

FLANGED TYPE
3/4" SAE 6000



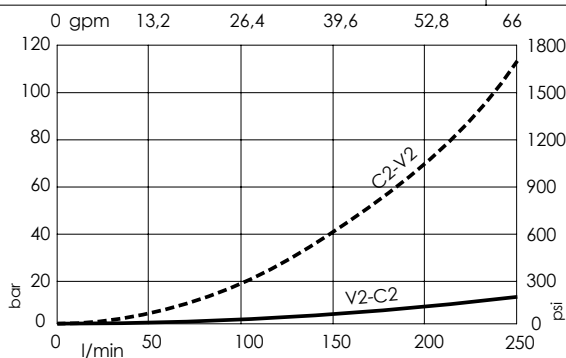
SPECIFICATIONS

Max. operating pressure:	420 bar (6000 psi)
Rated flow:	250 l/min (66 gpm)
Manifold:	Steel
Weight:	8,17 kg (17,97 lbs)
Contamination class to ISO 4406: See technical spec.	
MTTF_d: 150 - 1200 years: See technical spec.	

NOTES

When correctly adjusted for the specific excavator installation, these valves meet the requirement of ISO 8643.
For other configurations/quick codes not available in this catalogue page please consult factory

CURVES



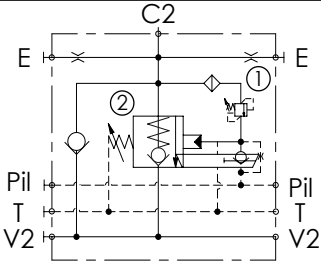
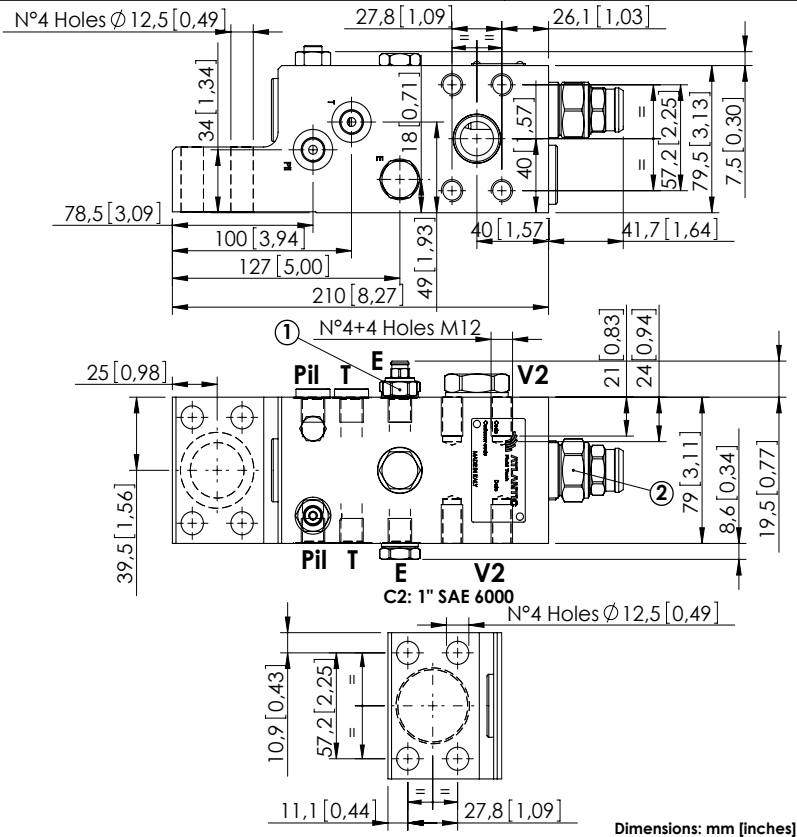
ORDERING CODES

Quick code	Description	Main ports size	Standard setting	Adjustment range	Pressure increase
ML000075	MLLT-200-AAGR-00-S34-N420	V2,C2: 3/4" SAE 6000 E,Pil,T: G 1/4"	① 350 bar @5 l/min (5000 psi @1,3 gpm) ② 7.5 bar (100 psi) Crack. pr.	① 150-420 bar (2100-6000 psi) ② 3-15 bar (50-200 psi)	① 236 bar/turn (3400 psi/turn) ② 5 bar/turn (70 psi/turn)
ML000076	MLLT-200-AAUR-00-S34-N420	V2,C2: 3/4" SAE 6000 E,Pil,T: 9/16-18 UNF-2B	① 350 bar @5 l/min (5000 psi @1,3 gpm) ② 7.5 bar (100 psi) Crack. pr.	① 150-420 bar (2100-6000 psi) ② 3-15 bar (50-200 psi)	① 236 bar/turn (3400 psi/turn) ② 5 bar/turn (70 psi/turn)
ML000091	MLLT-200-ASGR-00-S34-N420	V2: 3/4" SAE 6000 C2: 3/4" SAE 6000/3000 E,Pil,T: G 1/4"	① 350 bar @5 l/min (5000 psi @1,3 gpm) ② 7.5 bar (100 psi) Crack. pr.	① 150-420 bar (2100-6000 psi) ② 3-15 bar (50-200 psi)	① 236 bar/turn (3400 psi/turn) ② 5 bar/turn (70 psi/turn)
ML000112	MLLT-200-ASJR-00-S34-N420	V2,C2: 3/4" SAE 6000 E,Pil,T: 1/4" JIS	① 350 bar @5 l/min (5000 psi @1,3 gpm) ② 7.5 bar (100 psi) Crack. pr.	① 150-420 bar (2100-6000 psi) ② 3-15 bar (50-200 psi)	① 236 bar/turn (3400 psi/turn) ② 5 bar/turn (70 psi/turn)

CHECK AND METERING VALVE

MLLT-200-AAGR

FLANGED TYPE
1" SAE 6000



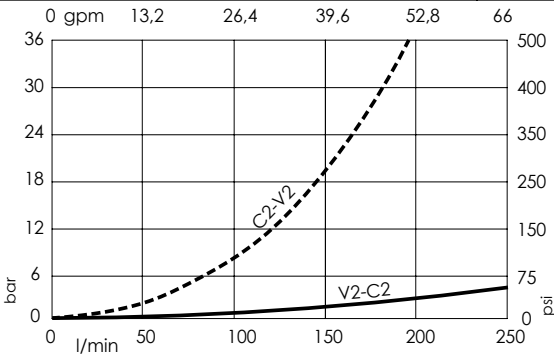
SPECIFICATIONS

Max. operating pressure:	420 bar (6000 psi)
Rated flow:	250 l/min (66 gpm)
Manifold:	Steel
Weight:	8,01 kg (17,66 lbs)
Contamination class to ISO 4406:	See technical spec.
MTTFd:	150 - 1200 years: See technical spec.

NOTES

When correctly adjusted for the specific excavator installation, these valves meet the requirement of ISO 8643.
For other configurations/quick codes not available in this catalogue page please consult factory

CURVES

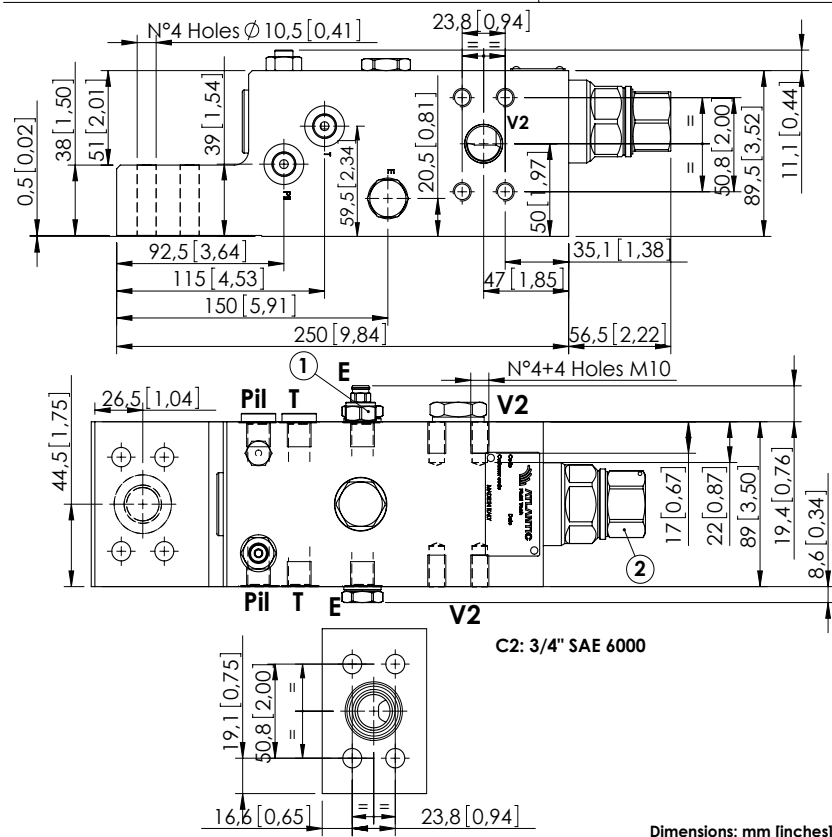


ORDERING CODES

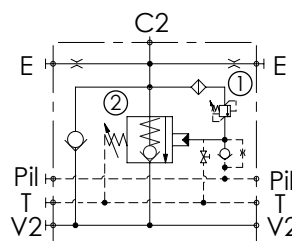
Quick code	Description	Main ports size	Standard setting	Adjustment range	Pressure increase
ML000138	MLLT-200-AAGR-00-S10-N420	V2,C2: 1" SAE 6000 E,Pil,T: G 1/4"	① 350 bar @5 l/min (5000 psi @1,3 gpm) ② 7.5 bar (100 psi) Crack. pr.	① 150-420 bar (2100-6000 psi) ② 3-15 bar (50-200 psi)	① 236 bar/turn (3400 psi/turn) ② 5 bar/turn (70 psi/turn)

CHECK AND METERING VALVE

MLLT-300-AAGR

FLANGED TYPE
3/4" SAE 6000

Dimensions: mm [inches]



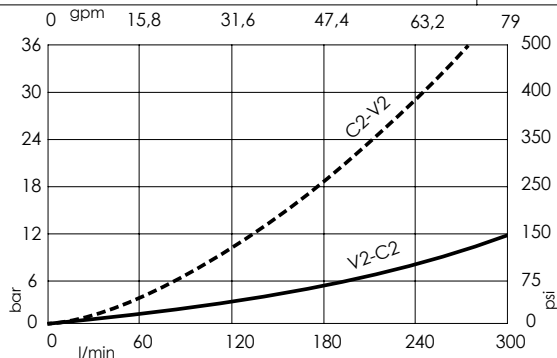
SPECIFICATIONS

Max. operating pressure:	420 bar (6000 psi)
Rated flow:	350 l/min (92 gpm)
Manifold:	Steel
Weight:	12,27 kg (27,05 lbs)
Contamination class to ISO 4406:	See technical spec.
MTTF _d :	150 - 1200 years: See technical spec.

NOTES

When correctly adjusted for the specific excavator installation, these valves meet the requirement of ISO 8643.
For other configurations/quick codes not available in this catalogue page please consult factory

CURVES



ORDERING CODES

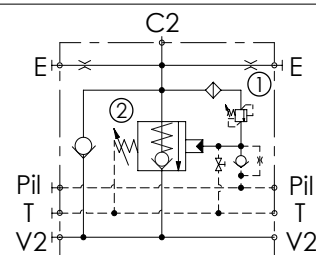
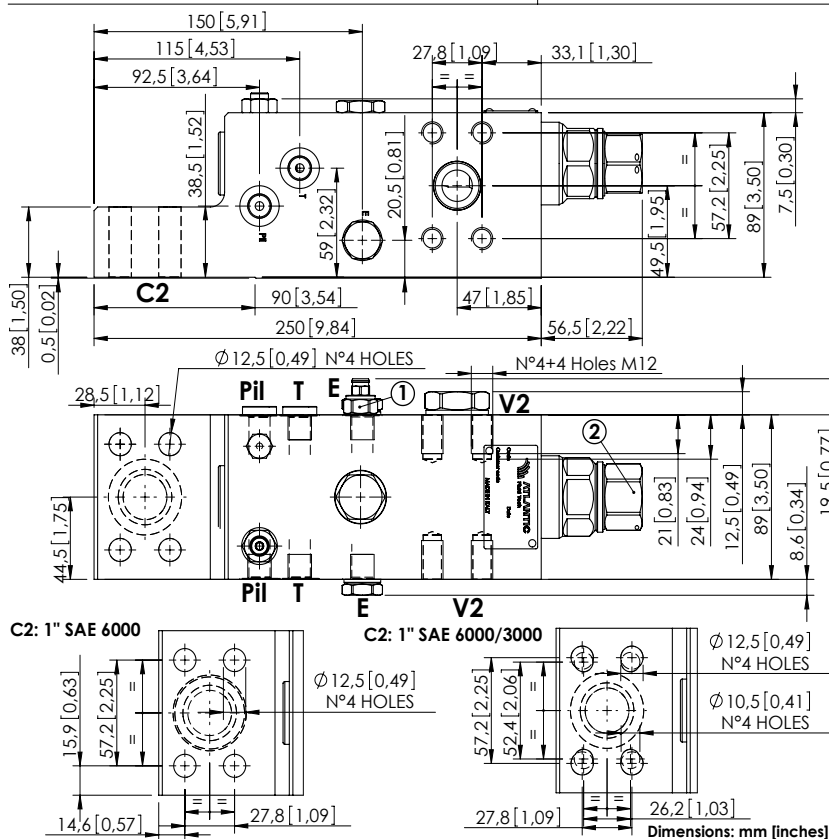
Quick code	Description	Main ports size	Standard setting	Adjustment range	Pressure increase
ML000106	MLLT-300-AAGR-00-S34-N420	V2,C2: 3/4" SAE 6000 E,Pil,T: G 1/4"	① 350 bar @5 l/min (5000 psi @1,3 gpm) ② 7.5 bar (100 psi) Crack. pr.	① 150-420 bar (2100-6000 psi) ② 3-15 bar (50-200 psi)	① 236 bar/turn (3400 psi/turn) ② 3,4 bar/turn (50 psi/turn)
ML000115	MLLT-300-AAJR-00-S34-N420	V2,C2: 3/4" SAE 6000 E,Pil,T: 1/4" JIS	① 350 bar @5 l/min (5000 psi @1,3 gpm) ② 7.5 bar (100 psi) Crack. pr.	① 150-420 bar (2100-6000 psi) ② 3-15 bar (50-200 psi)	① 236 bar/turn (3400 psi/turn) ② 3,4 bar/turn (50 psi/turn)

Revision D1

CHECK AND METERING VALVE

MLLT-300-AAGR

FLANGED TYPE
1" SAE 6000



SPECIFICATIONS

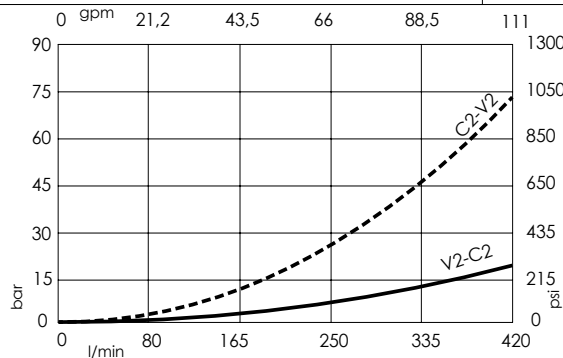
Max. operating pressure:	420 bar (6000 psi)
Rated flow:	400 l/min (106 gpm)
Manifold:	Steel
Weight:	12,14 kg (26,76 lbs)
Contamination class to ISO 4406: See technical spec.	
MTTF_d:	150 - 1200 years: See technical spec.

NOTES

When correctly adjusted for the specific excavator installation, these valves meet the requirement of ISO 8643.

For other configurations/quick codes not available in this catalogue page please consult factory

CURVES

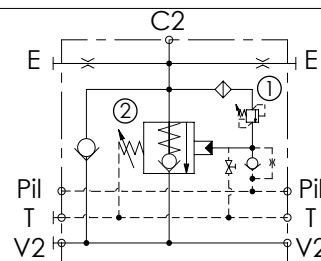
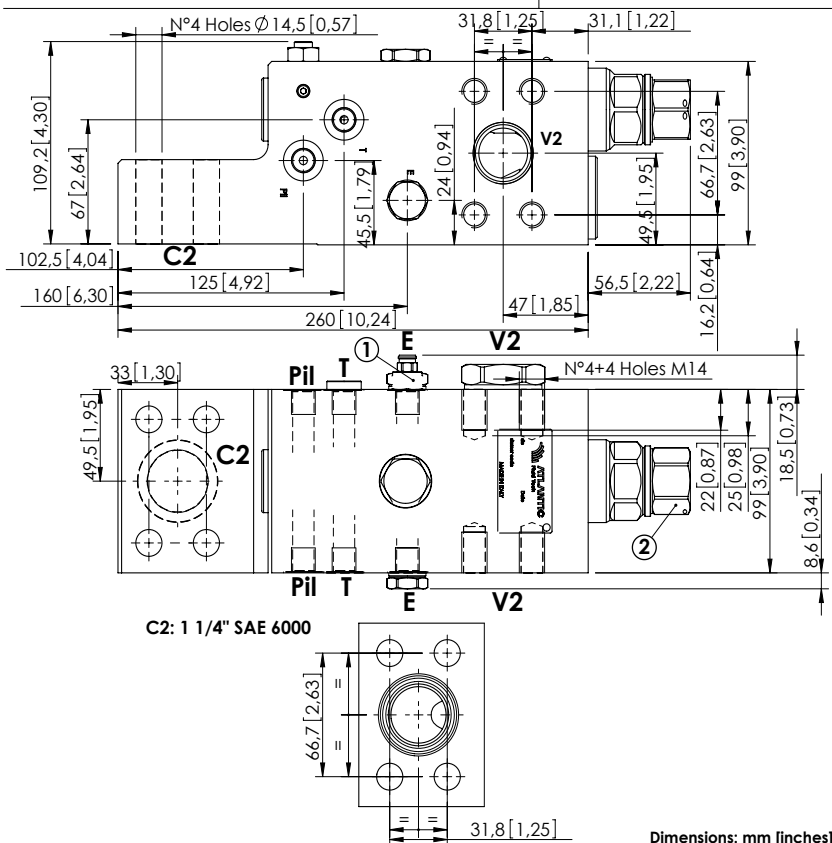


ORDERING CODES

Quick code	Description	Main ports size	Standard setting	Adjustment range	Pressure increase
ML000079	MLLT-300-AAGR-00-S10-N420	V2,C2: 1 " SAE 6000 E,Pil,T: G 1/4"	① 350 bar @5 l/min (5000 psi @1,3 gpm) ② 7.5 bar (100 psi) Crack. pr.	① 150-420 bar (2100-6000 psi) ② 3-15 bar (50-200 psi)	① 236 bar/turn (3400 psi/turn) ② 3,4 bar/turn (50 psi/turn)
ML000080	MLLT-300-AAUR-00-S10-N420	V2,C2: 1 " SAE 6000 E,Pil,T: 9/16-18 UNF-2B	① 350 bar @5 l/min (5000 psi @1,3 gpm) ② 7.5 bar (100 psi) Crack. pr.	① 150-420 bar (2100-6000 psi) ② 3-15 bar (50-200 psi)	① 236 bar/turn (3400 psi/turn) ② 3,4 bar/turn (50 psi/turn)
ML000081	MLLT-300-ASGR-00-S10-N420	V2: 1" SAE 6000 C2: 1" SAE 6000/3000 E, Pil, T: G 1/4"	① 350 bar @5 l/min (5000 psi @1,3 gpm) ② 7.5 bar (100 psi) Crack. pr.	① 150-420 bar (2100-6000 psi) ② 3-15 bar (50-200 psi)	① 236 bar/turn (3400 psi/turn) ② 3,4 bar/turn (50 psi/turn)
ML000177	MLLT-300-ASJR-00-S10-N420	V2,C2: 1" SAE 6000 E, Pil, T: JIS 1/4"	① 350 bar @5 l/min (5000 psi @1,3 gpm) ② 7.5 bar (100 psi) Crack. pr.	① 150-420 bar (2100-6000 psi) ② 3-15 bar (50-200 psi)	① 236 bar/turn (3400 psi/turn) ② 3,4 bar/turn (50 psi/turn)

CHECK AND METERING VALVE

MLLT-300-AAGN

FLANGED TYPE
1 1/4" SAE 6000

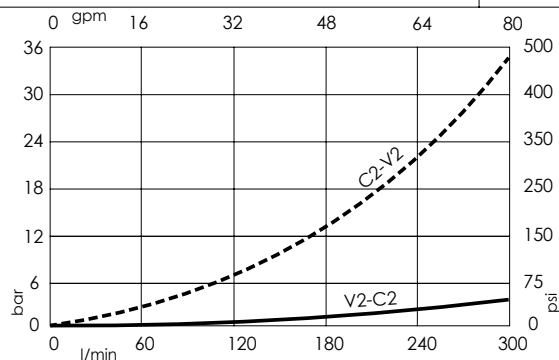
SPECIFICATIONS

Max. operating pressure:	420 bar (6000 psi)
Rated flow:	500 l/min (132 gpm)
Manifold:	Steel
Weight:	15.08 kg (33.25 lbs)
Contamination class to ISO 4406:	See technical spec.
MTF _d :	150 - 1200 years: See technical spec.

NOTES

When correctly adjusted for the specific excavator installation, these valves meet the requirement of ISO 8643.
For other configurations/quick codes not available in this catalogue page please consult factory

CURVES



ORDERING CODES

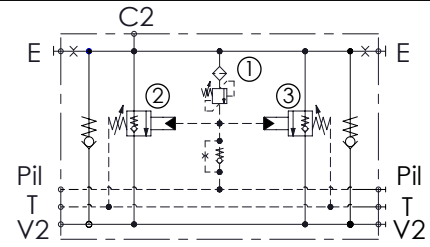
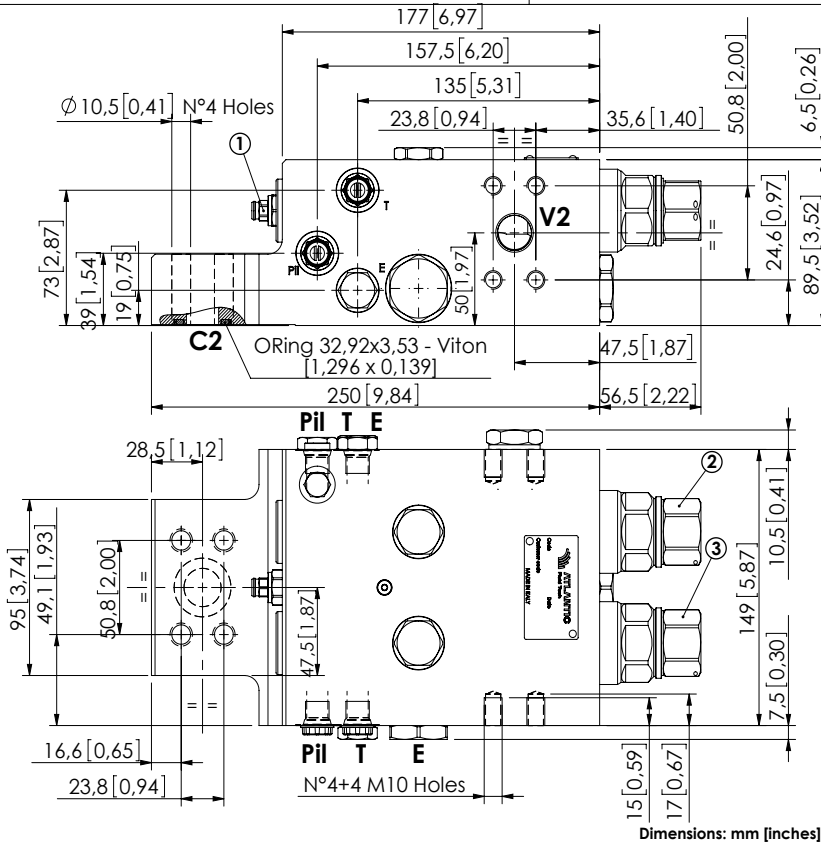
Quick code	Description	Main ports size	Standard setting	Adjustment range	Pressure increase
ML000077	MLLT-300-AAGN-00-S11-N420	V2,C2: 1 1/4" SAE 6000 E,Pil,T: G 1/4"	① 350 bar @5 l/min (5000 psi @1,3 gpm) ② 7.5 bar (100 psi) Crack. pr.	① 150-420 bar (2100-6000 psi) ② 3-15 bar (50-200 psi)	① 236 bar/turn (3400 psi/turn) ② 3,4 bar/turn (50 psi/turn)
ML000078	MLLT-300-AAUN-00-S11-N420	V2,C2: 1 1/4" SAE 6000 E,Pil,T: 9/16-18 UNF-2B	① 350 bar @5 l/min (5000 psi @1,3 gpm) ② 7.5 bar (100 psi) Crack. pr.	① 150-420 bar (2100-6000 psi) ② 3-15 bar (50-200 psi)	① 236 bar/turn (3400 psi/turn) ② 3,4 bar/turn (50 psi/turn)
ML000131	MLLT-300-AAJN-00-S11-N420	V2,C2: 1 1/4" SAE 6000 E,Pil,T: 1/4" JIS	① 350 bar @5 l/min (5000 psi @1,3 gpm) ② 7.5 bar (100 psi) Crack. pr.	① 150-420 bar (2100-6000 psi) ② 3-15 bar (50-200 psi)	① 236 bar/turn (3400 psi/turn) ② 3,4 bar/turn (50 psi/turn)

Revision C1

CHECK AND METERING VALVE

MLLT-500-AAJN

FLANGED TYPE
3/4" SAE 6000



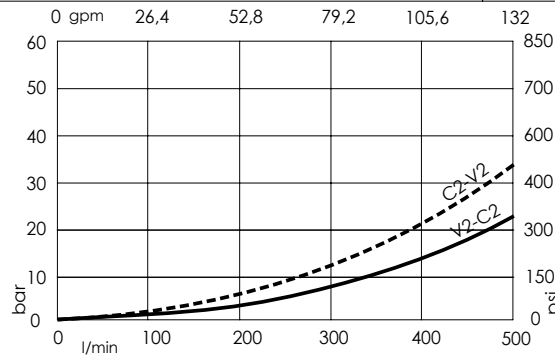
SPECIFICATIONS

Max. operating pressure:	420 bar (6000 psi)
Rated flow:	500 l/min (132 gpm)
Manifold:	Steel
Weight:	19.63 kg (43,28 lbs)
Contamination class to ISO 4406:	See technical spec.
MTTFd:	150 - 1200 years: See technical spec.

NOTES

When correctly adjusted for the specific excavator installation, these valves meet the requirement of ISO 8643.
For other configurations/quick codes not available in this catalogue page please consult factory

CURVES

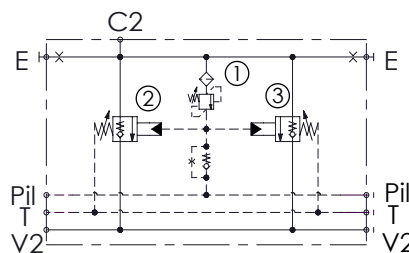
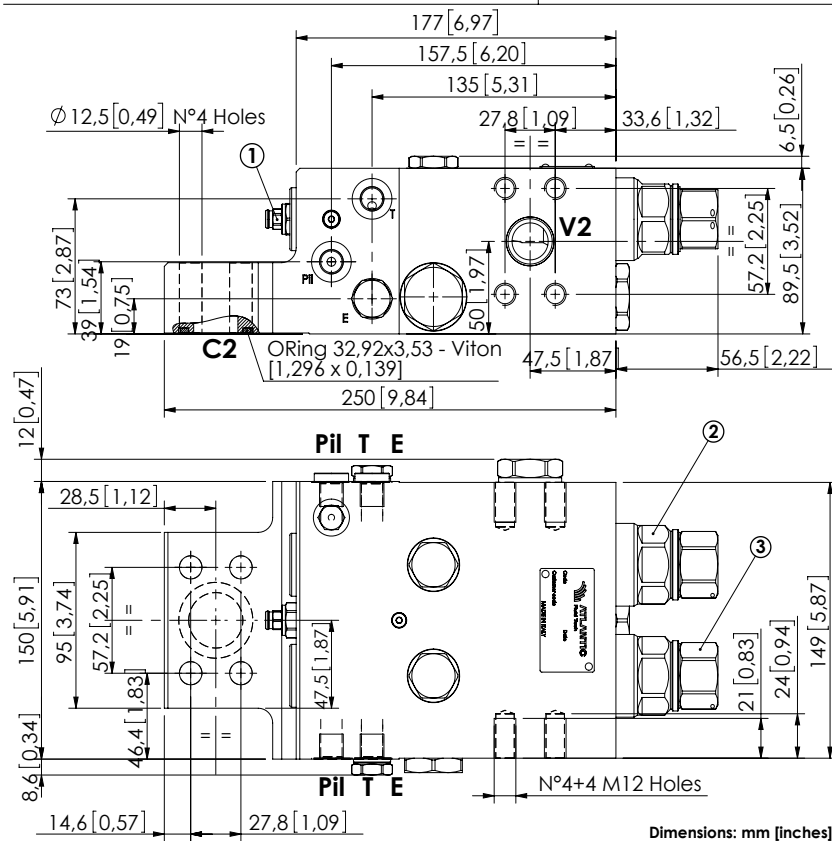


ORDERING CODES

Quick code	Description	Main ports size	Standard setting	Adjustment range	Pressure increase
ML000263	MLLT-500-AAJN-00-S34-N420	V2,C2: 3/4" SAE 6000 E,Pil,T: JIS 1/4"	① 350 bar @5 l/min (5000 psi @1.3 gpm) ② ③ 7.5 bar (100 psi) Crack. pr.	① 150-420 bar (2100-6000 psi) ② ③ 3-15 bar (50-200 psi)	① 236 bar/turn (3400 psi/turn) ② ③ 3,4 bar/turn (50 psi/turn)

CHECK AND METERING VALVE

MLLT-500-AAGN

FLANGED TYPE
1" SAE 6000

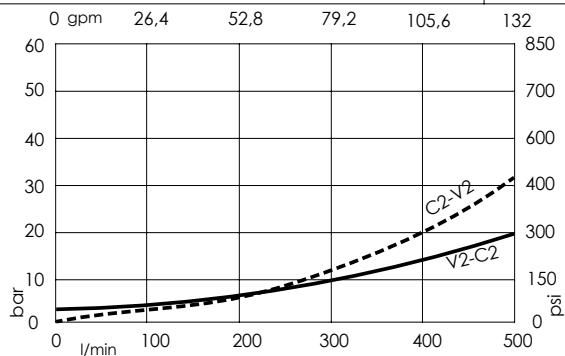
SPECIFICATIONS

Max. operating pressure:	420 bar (6000 psi)
Rated flow:	500 l/min (132 gpm)
Manifold:	Steel
Weight:	19.48 kg (42.95 lbs)
Contamination class to ISO 4406:	See technical spec.
MTTF _d :	150 - 1200 years: See technical spec.

NOTES

When correctly adjusted for the specific excavator installation, these valves meet the requirement of ISO 8643.
For other configurations/quick codes not available in this catalogue page please consult factory

CURVES



ORDERING CODES

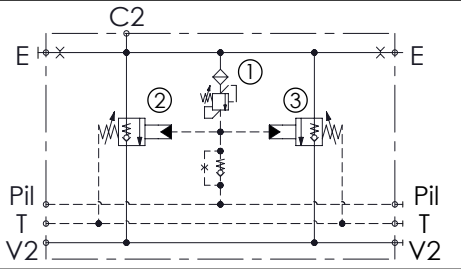
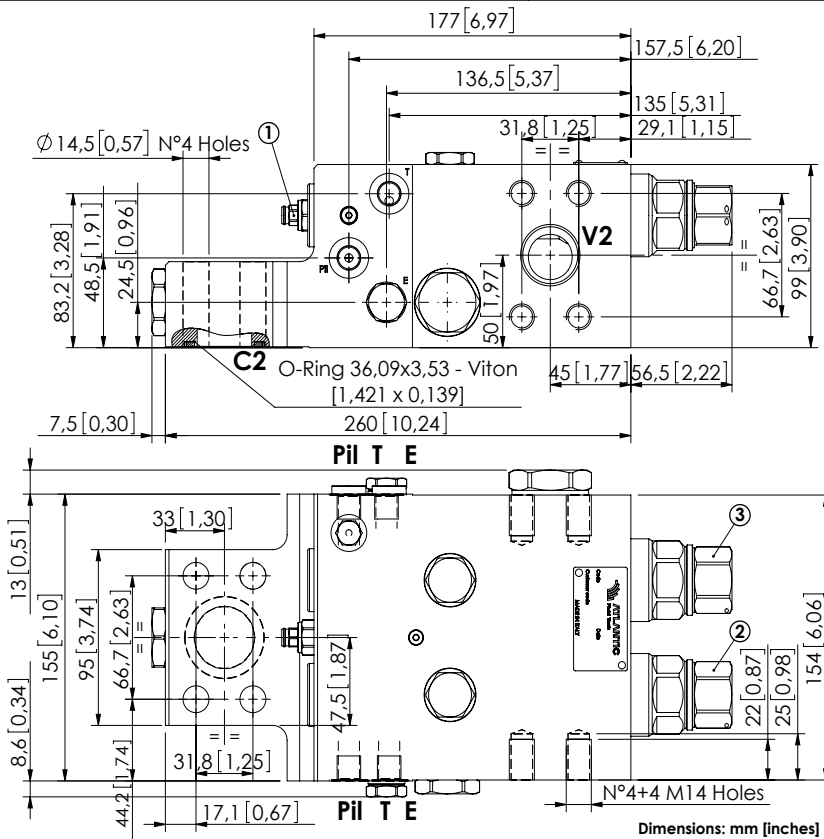
Quick code	Description	Main ports size	Standard setting	Adjustment range	Pressure increase
ML000113	MLLT-500-AAGN-00-S10-N420	V2,C2: 1" SAE 6000 E,Pil,T: G 1/4"	① 350 bar @5 l/min(5300 psi @1,3 gpm) ② 10 bar (150 psi) Crack. pr. ③ 7.5 bar (100 psi) Crack. pr.	① 150-420 bar (2100-6000 psi) ② ③ 3-15 bar (50-200 psi)	① 236 bar/turn (3400 psi/turn) ② ③ 3,4 bar/turn (50 psi/turn)

Revision D1

CHECK AND METERING VALVE

MLLT-550-AAGN

FLANGED TYPE
1" 1/4 SAE 6000



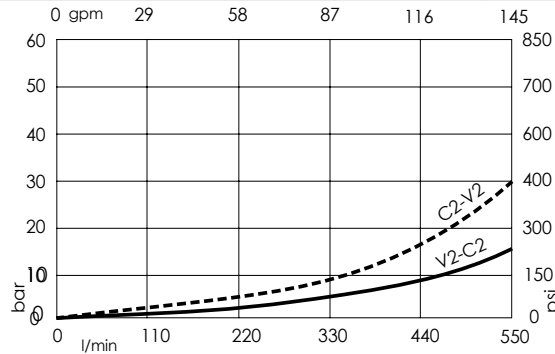
SPECIFICATIONS

Max. operating pressure:	420 bar (6000 psi)
Rated flow:	550 l/min (145 gpm)
Manifold:	Steel
Weight:	22.66 kg (49.96 lbs)
Contamination class to ISO 4406:	See technical spec.
MTTF _d :	150 - 1200 years: See technical spec.

NOTES

When correctly adjusted for the specific excavator installation, these valves meet the requirement of ISO 8643.
For other configurations/quick codes not available in this catalogue page please consult factory

CURVES

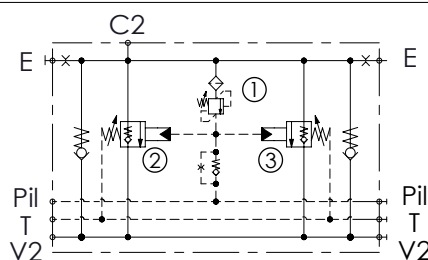
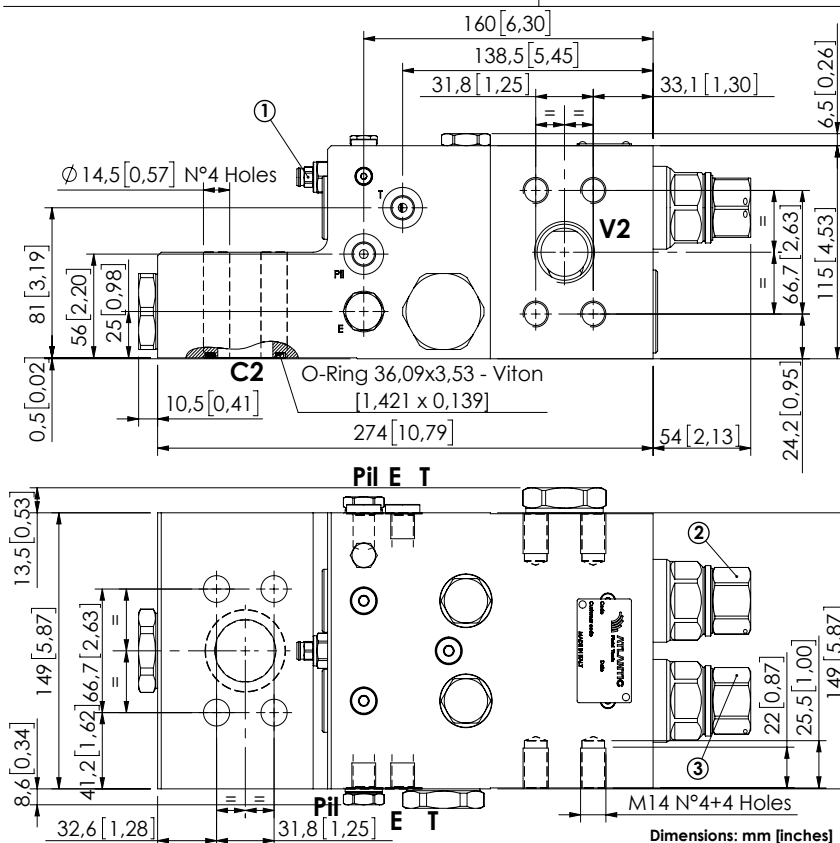


ORDERING CODES

Quick code	Description	Main ports size	Standard setting	Adjustment range	Pressure increase
ML000161	MLLT-500-AAGN-00-S11-N420	V2,C2:1" 1/4 SAE 6000 E,Pil,T:G 1/4"	① 350 bar @5 l/min (5000 psi @1.3 gpm) ②③ 7.5 bar (100 psi) Crack. pr.	① 150-420 bar (2100-6000 psi) ②③ 3-15 bar (50-200 psi)	① 236 bar/turn (3400 psi/turn) ②③ 3,4 bar/turn (50 psi/turn)

CHECK AND METERING VALVE

MLLT-700-AAGN

FLANGED TYPE
1" 1/4 SAE 6000

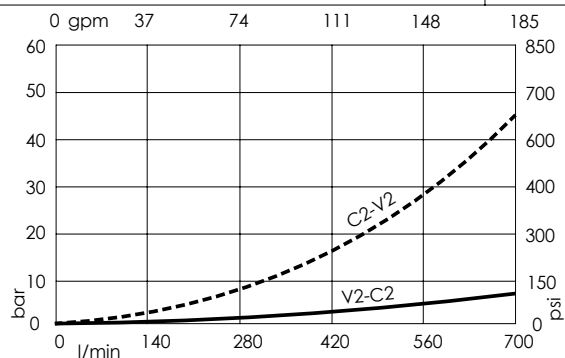
SPECIFICATIONS

Max. operating pressure:	420 bar (6000 psi)
Rated flow:	700 l/min (185 gpm)
Manifold:	Steel
Weight:	27,53 kg (60,69 lbs)
Contamination class to ISO 4406:	See technical spec.
MTTF _d :	150 - 1200 years: See technical spec.

NOTES

When correctly adjusted for the specific excavator installation, these valves meet the requirement of ISO 8643.
For other configurations/quick codes not available in this catalogue page please consult factory

CURVES



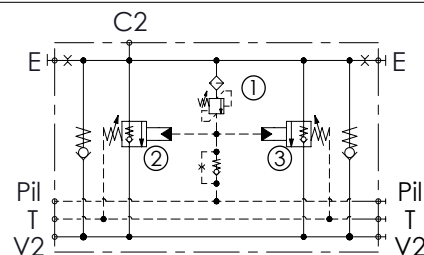
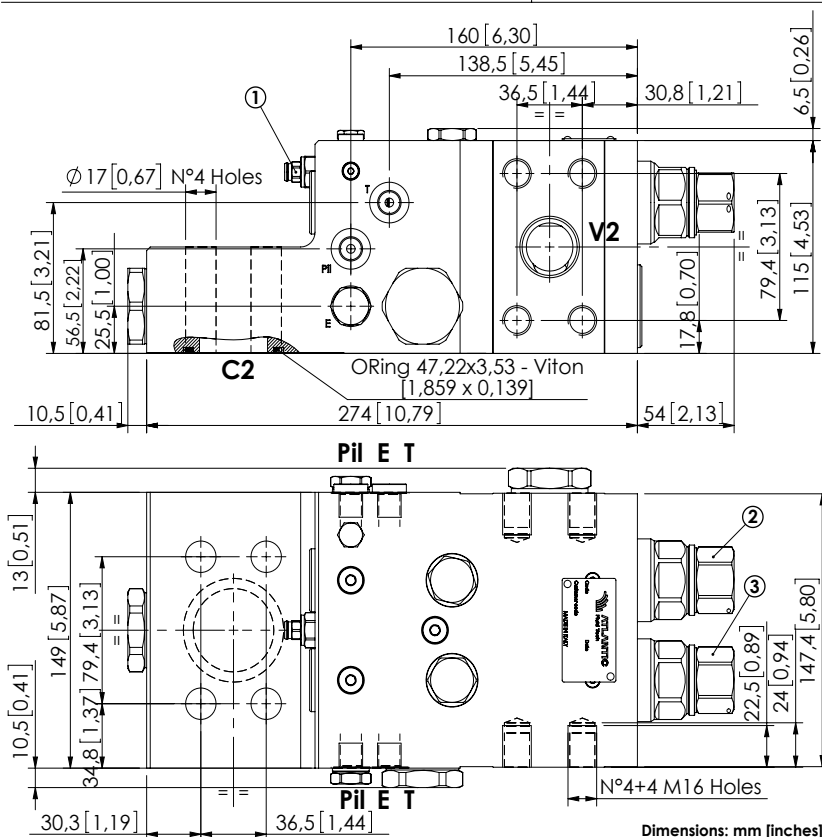
ORDERING CODES

Quick code	Description	Main ports size	Standard setting	Adjustment range	Pressure increase
ML000211	MLLT-700-AAGN-00-S11-N420	V2,C2:1" 1/4 SAE 6000 E,Pil,T:G 1/4"	① 400 bar @5 l/min(5800 psi @1,3 gpm) ② 10.5 bar (150 psi) Crack. pr. ③ 7.5 bar (100 psi) Crack. pr.	① 150-420 bar (2100-6000 psi) ② ③ 3-15 bar (50-200 psi)	① 236 bar/turn (3400 psi/turn) ② ③ 3,4 bar/turn (50 psi/turn)

Revision A1

CHECK AND METERING VALVE

MLLT-700-AAGN

FLANGED TYPE
1" 1/2 SAE 6000

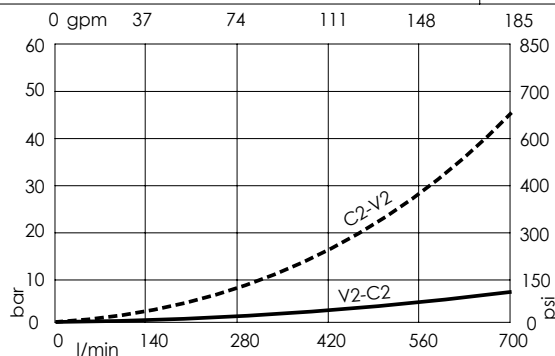
SPECIFICATIONS

Max. operating pressure:	420 bar (6000 psi)
Rated flow:	700 l/min (185 gpm)
Manifold:	Steel
Weight:	27.27 kg (60,19 lbs)
Contamination class to ISO 4406:	See technical spec.
MTTFd:	150 - 1200 years: See technical spec.

NOTES

When correctly adjusted for the specific excavator installation, these valves meet the requirement of ISO 8643.
For other configurations/quick codes not available in this catalogue page please consult factory

CURVES



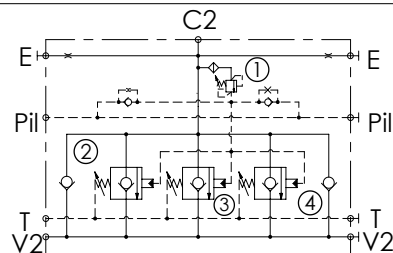
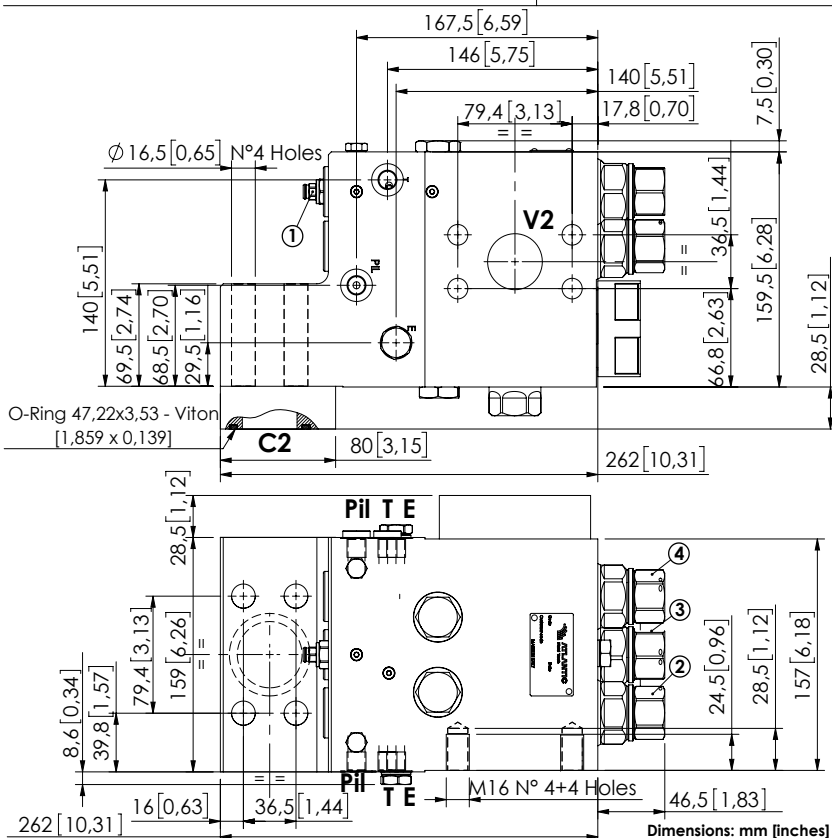
ORDERING CODES

Quick code	Description	Main ports size	Standard setting	Adjustment range	Pressure increase
ML000098	MLLT-700-AAGN-00-S22-N420	V2,C2:1" 1/2 SAE 6000 E,Pil,T:G 1/4"	① 400 bar @5 l/min(5800 psi @1,3 gpm) ② 10.5 bar (150 psi) Crack. pr. ③ 7.5 bar (100 psi) Crack. pr.	① 150-420 bar (2100-6000 psi) ② ③ 3-15 bar (50-200 psi)	① 236 bar/turn (3400 psi/turn) ② ③ 3,4 bar/turn (50 psi/turn)
ML000094	MLLT-700-AAJN-00-S22-N420	V2,C2:1" 1/2 SAE 6000 E,Pil,T:1/4" JIS	① 400 bar @5 l/min(5800 psi @1,3 gpm) ② 10.5 bar (150 psi) Crack. pr. ③ 7.5 bar (100 psi) Crack. pr.	① 150-420 bar (2100-6000 psi) ② ③ 3-15 bar (50-200 psi)	① 236 bar/turn (3400 psi/turn) ② ③ 3,4 bar/turn (50 psi/turn)

Revision D

CHECK AND METERING VALVE

MLLT-1400-AAGN

FLANGED TYPE
1" 1/2 SAE 6000

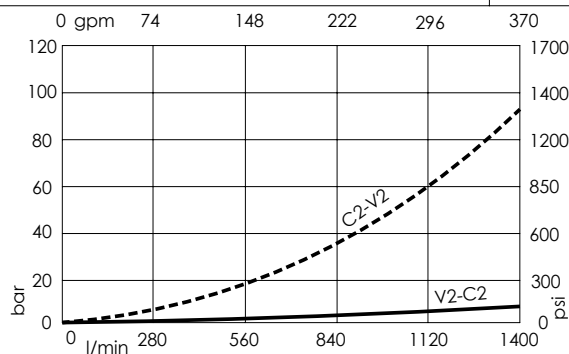
SPECIFICATIONS

Max. operating pressure:	420 bar (6000 psi)
Rated flow:	1400 l/min (370 gpm)
Manifold:	Steel
Weight:	43.12 kg (94.91 lbs)
Contamination class to ISO 4406:	See technical spec.
MTFa:	150 - 1200 years: See technical spec.

NOTES

When correctly adjusted for the specific excavator installation, these valves meet the requirement of ISO 8643.
For other configurations/quick codes not available in this catalogue page please consult factory

CURVES



ORDERING CODES

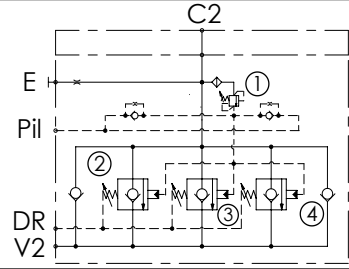
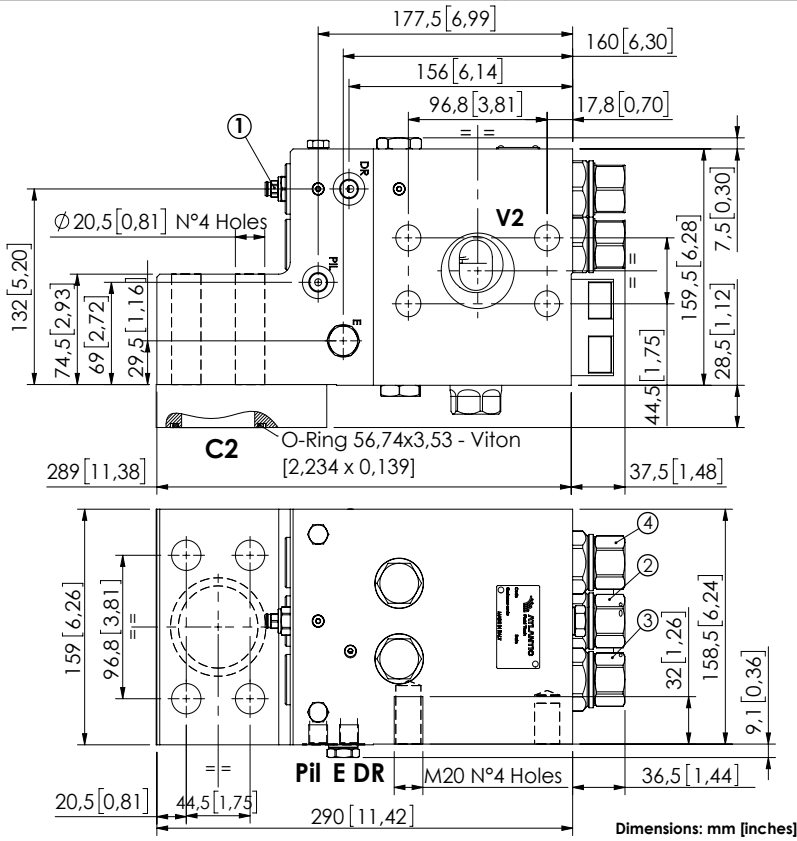
Quick code	Description	Main ports size	Standard setting	Adjustment range	Pressure increase
ML000162	MLLT-1400-AAGN-00-S22-N420	V2,C2:1" 1/2 SAE 6000 E,Pil,T:G 1/4"	① 400 bar @5 l/min (5800 psi @1.3 gpm) ③ 7.5 bar Crack. pr. (100 psi) ②④ 8.5 bar Crack.pr. (120 psi)	① 150-420 bar (2100-6000 psi) ②③④ 3-15 bar (50-200 psi)	① 236 bar/turn (3400 psi/turn) ②③④ 3,4 bar/turn (50 psi/turn)

Revision D1

CHECK AND METERING VALVE

MLLT-1400-AAGR

FLANGED TYPE
2" SAE 6000
RIGHT VERSION



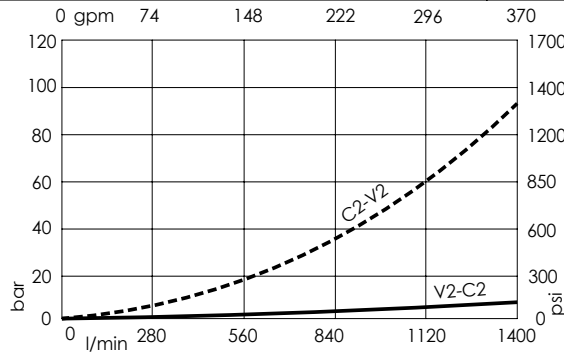
SPECIFICATIONS

Max. operating pressure:	420 bar (6000 psi)
Rated flow:	1400 l/min (370 gpm)
Manifold:	Steel
Weight:	45.75 kg (100,93 lbs)
Contamination class to ISO 4406:	See technical spec.
MTF _d :	150 - 1200 years: See technical spec.

NOTES

When correctly adjusted for the specific excavator installation, these valves meet the requirement of ISO 8643.
For other configurations/quick codes not available in this catalogue page please consult factory

CURVES



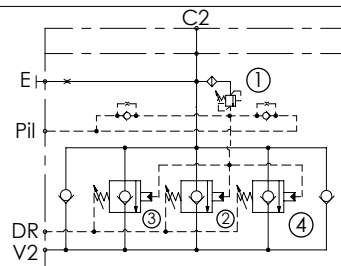
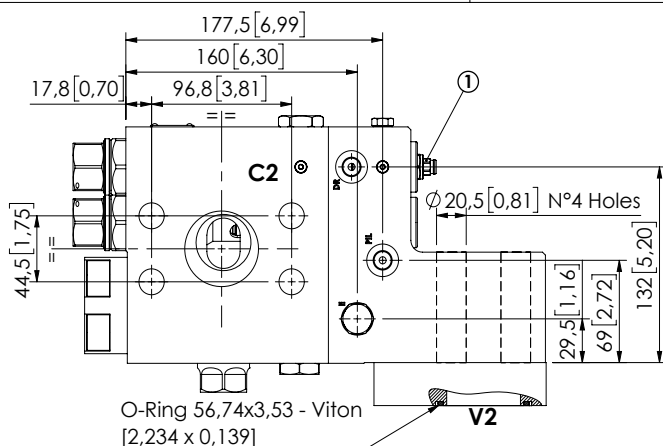
ORDERING CODES

Quick code	Description	Main ports size	Standard setting	Adjustment range	Pressure increase
ML000167	MLLT-1400-AAGR-00-S20-N420	V2,C2: 2" SAE 6000 E,Pil,DR: G 1/4"	① 400 bar @5 l/min (5800 psi @1,3 gpm) ② 7.5 bar Crack. pr. (100 psi) ③④ 8.5 bar Crack.pr. (120 psi)	① 150-420 bar (2100-6000 psi) ②③④ 3-15 bar (50-200 psi)	① 236 bar/turn (3400 psi/turn) ②③④ 3,4 bar/turn (50 psi/turn)

CHECK AND METERING VALVE

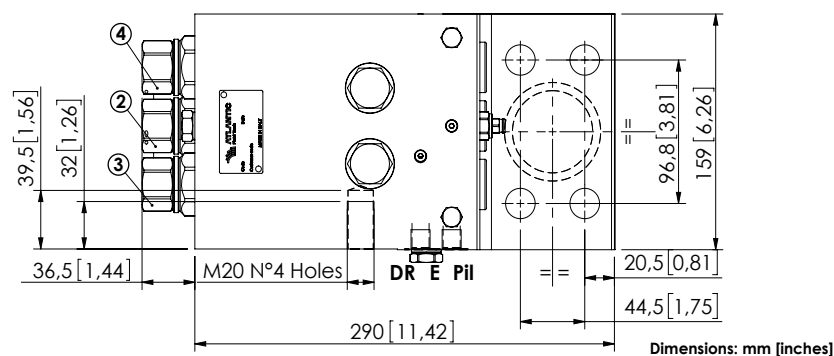
MLLT-1400-AAGL

FLANGED TYPE
2" SAE 6000
LEFT VERSION



SPECIFICATIONS

Max. operating pressure:	420 bar (6000 psi)
Rated flow:	1400 l/min (370 gpm)
Manifold:	Steel
Weight:	45.77 kg (100,97 lbs)
Contamination class to ISO 4406:	See technical spec.
MTTFd:	150 - 1200 years: See technical spec.

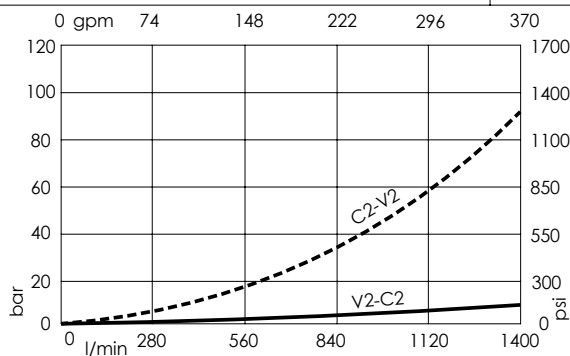


Dimensions: mm [inches]

NOTES

When correctly adjusted for the specific excavator installation, these valves meet the requirement of ISO 8643.
For other configurations/quick codes not available in this catalogue page please consult factory

CURVES



ORDERING CODES

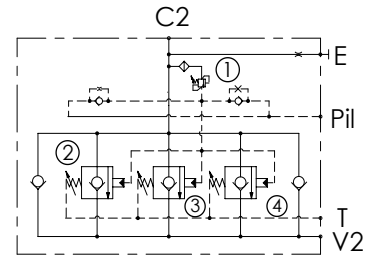
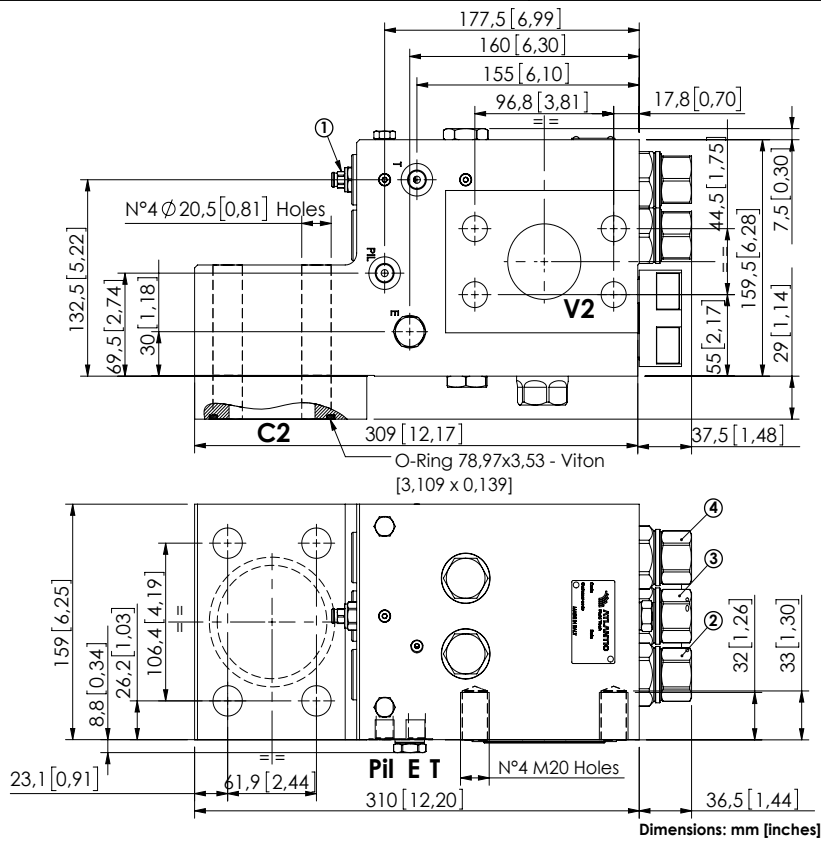
Quick code	Description	Main ports size	Standard setting	Adjustment range	Pressure increase
ML000166	MLLT-1400-AAGL-00-S20-N420	V2,C2:2" SAE 6000 E,Pil,T:G 1/4"	① 400 bar @5 l/min (5700 psi @1,3 gpm) ② 7.5 bar Crack. pr. (100 psi) ③④ 8.5 bar Crack.pr. (120 psi)	① 150-420 bar (5000-6000 psi) ②③④ 3-15 bar (50-200 psi)	① 236 bar/turn (3400 psi/turn) ②③④ 3,4 bar/turn (50 psi/turn)

Revision D1

CHECK AND METERING VALVE

MLLT-1500-AAGR

FLANGED TYPE
3" SAE 3000 / 2" SAE 6000
RIGHT VERSION



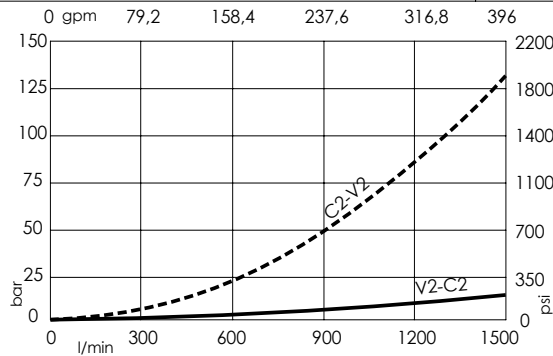
SPECIFICATIONS

Max. operating pressure:	420 bar (6000 psi)
Rated flow:	1500 l/min (396 gpm)
Manifold:	Steel
Weight:	47.14 kg (103.9 lbs)
Contamination class to ISO 4406:	See technical spec.
MTTFd:	150 - 1200 years: See technical spec.

NOTES

When correctly adjusted for the specific excavator installation, these valves meet the requirement of ISO 8643.
For other configurations/quick codes not available in this catalogue page please consult factory

CURVES



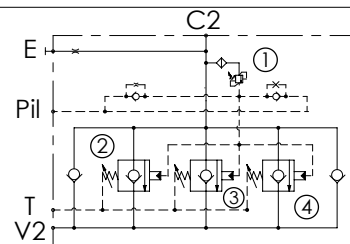
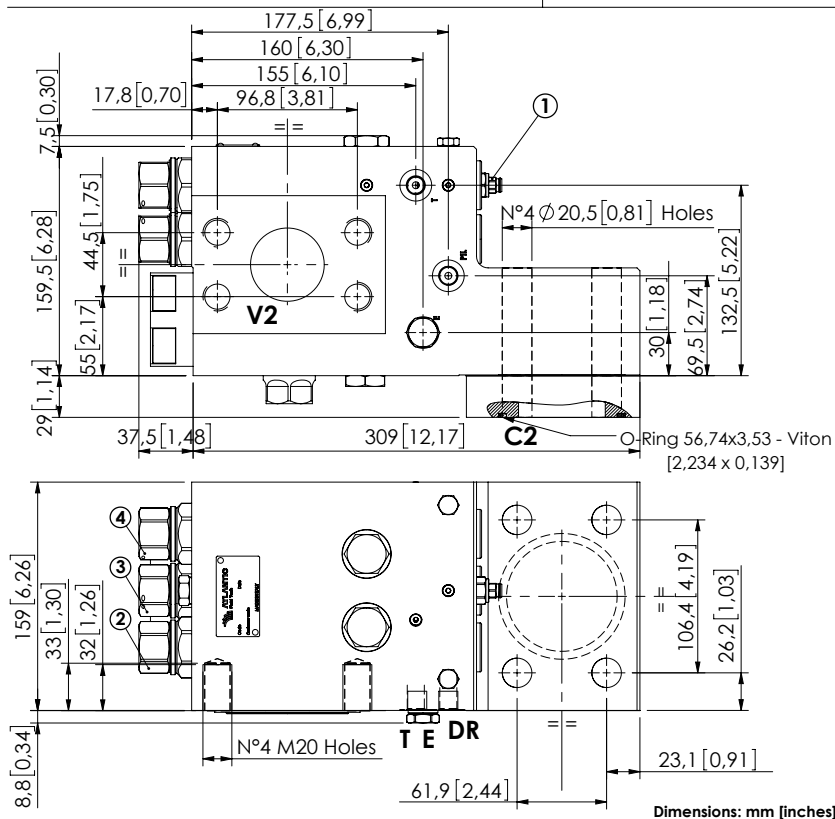
ORDERING CODES

Quick code	Description	Main ports size	Standard setting	Adjustment range	Pressure increase
ML000164	MLLT-1500-AAGR-00-S30-N420	V2: 2" SAE 6000 C2: 3" SAE 3000 E, Pil, T: G 1/4"	① 400 bar @ 5 l/min (5800 psi @ 1.3 gpm) ② ④ 8.5 bar Crack. pr. (120 psi) ③ 7.5 bar Crack.pr. (100 psi)	① 150-420 bar (2100-6000 psi) ②③④ 3-15 bar (50-200 psi)	① 236 bar/turn (3400 psi/turn) ②③④ 3.4 bar/turn (50 psi/turn)

CHECK AND METERING VALVE

MLLT-1500-AAGL

FLANGED TYPE
3" SAE 3000 / 2" SAE 6000
LEFT VERSION



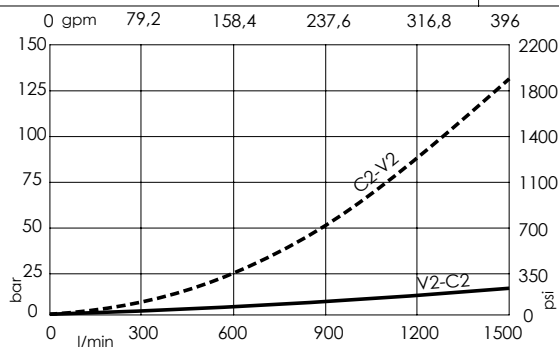
SPECIFICATIONS

Max. operating pressure:	420 bar (6000 psi)
Rated flow:	1500 l/min (396 gpm)
Manifold:	Steel
Weight:	47.13 kg (103,9 lbs)
Contamination class to ISO 4406:	See technical spec.
MTFa:	150 - 1200 years: See technical spec.

NOTES

When correctly adjusted for the specific excavator installation, these valves meet the requirement of ISO 8643.
For other configurations/quick codes not available in this catalogue page please consult factory

CURVES



ORDERING CODES

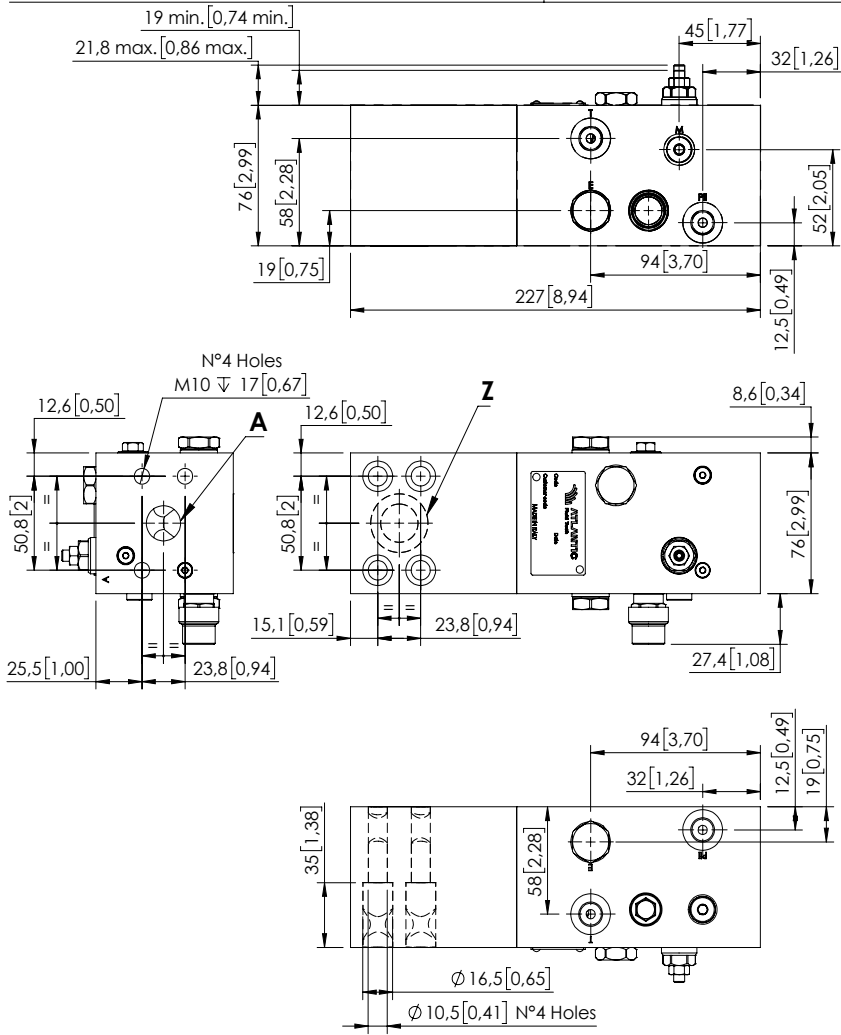
Quick code	Description	Main ports size	Standard setting	Adjustment range	Pressure increase
ML000163	MLLT-1500-AAGL-00-S30-N420	V2: 2" SAE 6000 C2: 3" SAE 3000 E, Pil, T: G 1/4"	① 400 bar @5 l/min (5800 psi @1,3 gpm) ②④ 8.5 bar Crack. pr. (120 psi) ③ 7.5 bar Crack.pr. (100 psi)	① 200-420 bar (2800-6000 psi) ②③④ 3-15 bar (50-200 psi)	① 236 bar/turn (3400 psi/turn) ②③④ 3,4 bar/turn (50 psi/turn)

Revision D1

CHECK AND METERING VALVE

MLNT-250-AAGN

FLANGED TYPE
3/4" SAE 6000

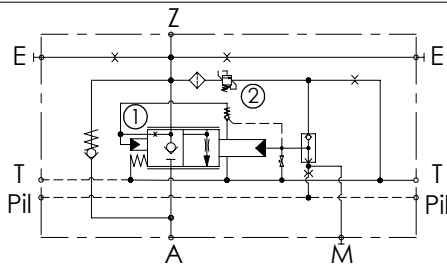
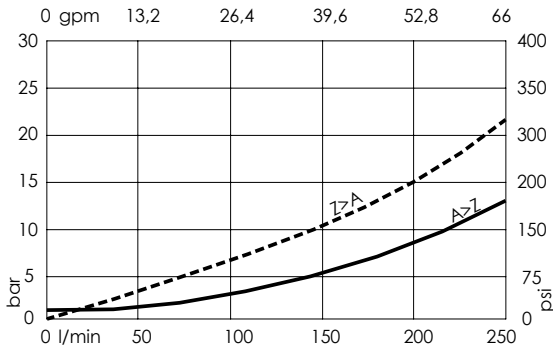


Dimensions: mm [inches]

NOTES

When correctly adjusted for the specific excavator installation, these valves meet the requirement of ISO 8643.
For other configurations/quick codes not available in this catalogue page please consult factory

CURVES



SPECIFICATIONS

Max. operating pressure:	420 bar (6000 psi)
Rated flow:	250 l/min (66 gpm)
Manifold:	Steel
Weight:	8,54 kg (18,32 lbs)
Contamination class to ISO 4406:	See technical spec.
MTF _d :	150 - 1200 years: See technical spec.

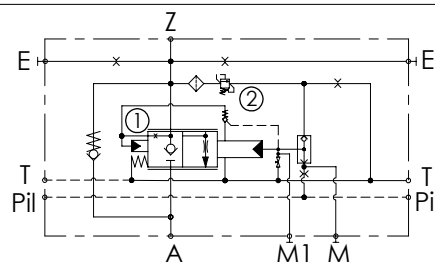
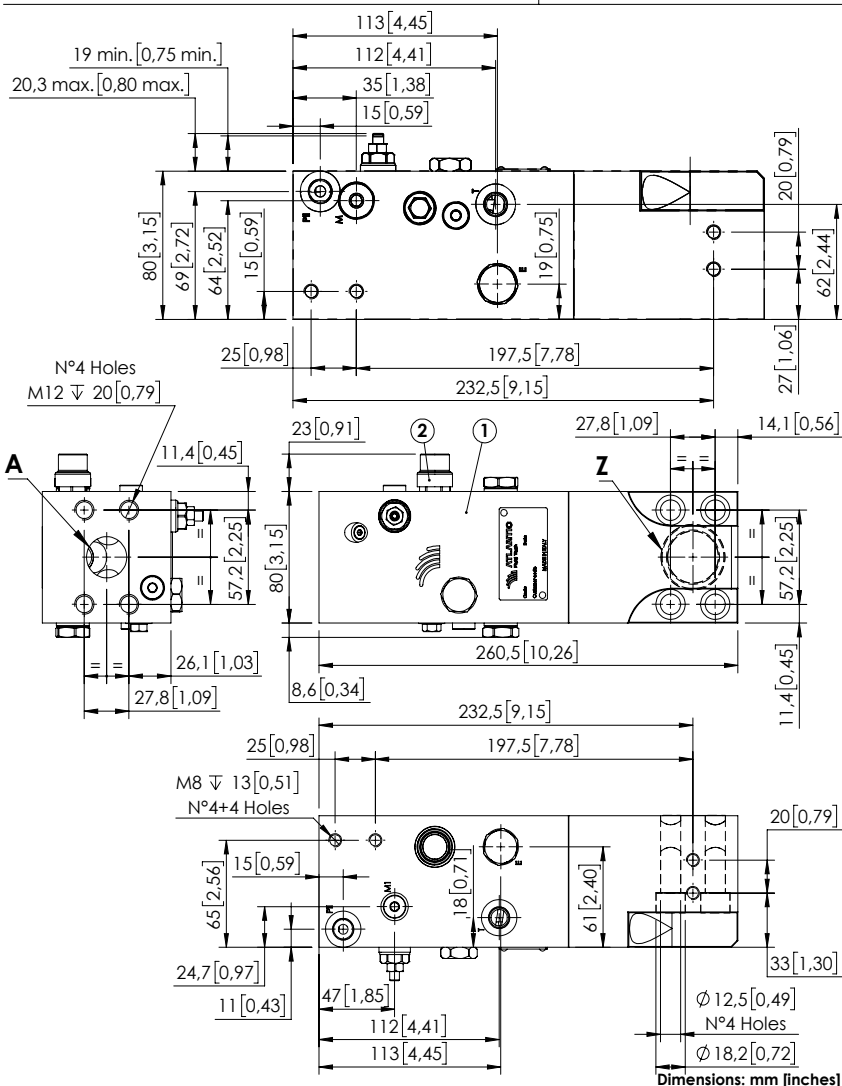
ORDERING CODES

Quick code	Description	Main ports size	Standard setting	Adjustment range	Pressure increase
ML000900	MLNT-250-AAGN-00-S34-N420	Z, A: 3/4" SAE 6000 E, T, Pil: G1/4" M: G1/8"	① 5,5 bar Cracking press. (75 psi Cracking press.) ② 420 bar @5 l/min (6000 psi @1,3 gpm)	① 3-10 bar (50-150 psi) ② 200-420 bar (2900-6000 psi)	① 1,8 bar/turn (25 psi/turn) ② 236 bar/turn (3400 psi/turn)

Revision D

CHECK AND METERING VALVE

MLNT-350-AAGN

FLANGED TYPE
1" SAE 6000

SPECIFICATIONS

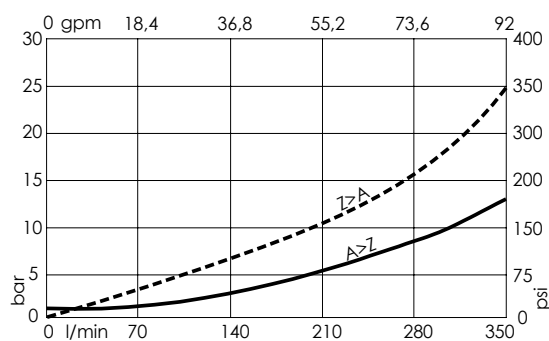
Max. operating pressure:	420 bar (6000 psi)
Rated flow:	350 l/min (92 gpm)
Manifold:	Steel
Weight:	10.18 kg (22,47 lbs)
Contamination class to ISO 4406:	See technical spec.
MTF _d :	150 - 1200 years: See technical spec.

NOTES

When correctly adjusted for the specific excavator installation, these valves meet the requirement of ISO 8643.

For other configurations/quick codes not available in this catalogue page please consult factory

CURVES



ORDERING CODES

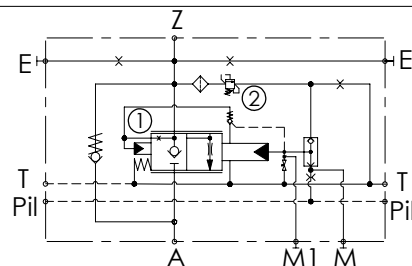
Quick code	Description	Main ports size	Standard setting	Adjustment range	Pressure increase
ML000271	MLNT-350-SAGN-00-S10-V420	Z, A: 1" SAE 6000 E, T, P, M: G1/4" M1: G1/8"	① 5,5 bar Cracking press. (75 psi Cracking press.) ② 420 bar @ 5 l/min (6000 psi @ 1,3 gpm)	① 3-17 bar (50-250 psi) ② 200-420 bar (2900-6000 psi)	① 2,4 bar/turn (35 psi/turn) ② 236 bar/turn (3400 psi/turn)

Revision E1

CHECK AND METERING VALVE

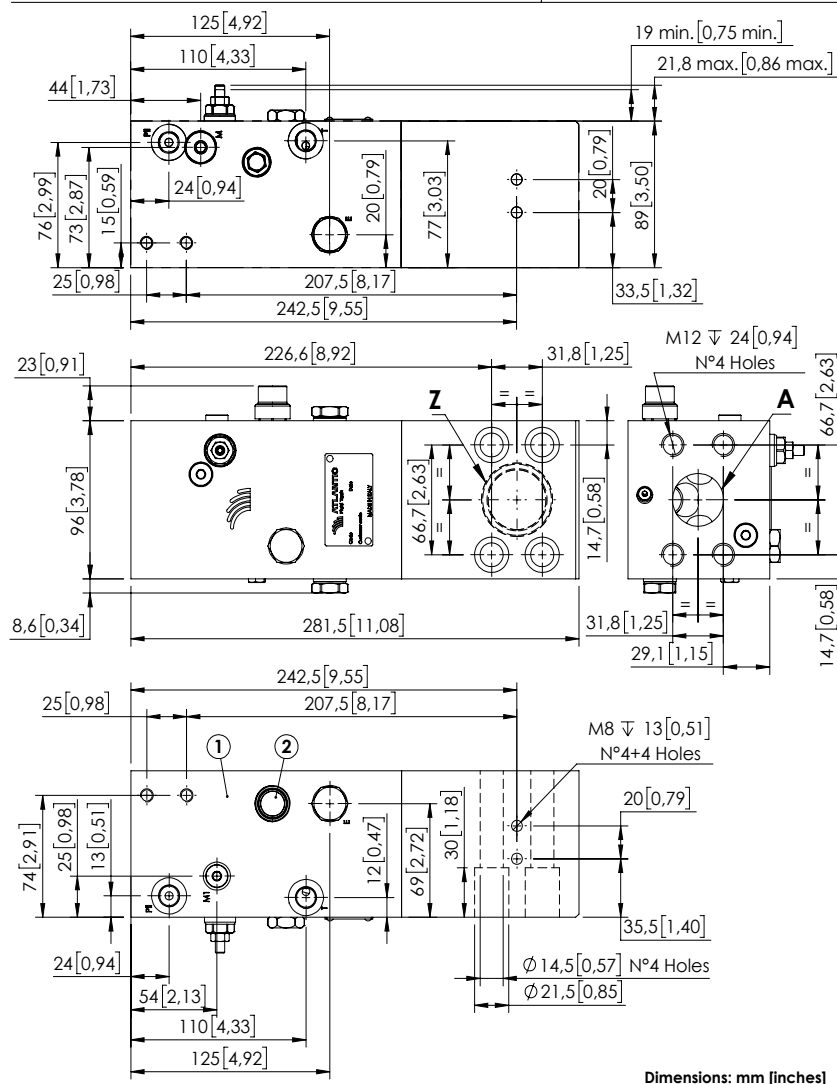
MLNT-500-AAGN

FLANGED TYPE
1" - 1/4 SAE 6000



SPECIFICATIONS

Max. operating pressure:	420 bar (6000 psi)
Rated flow:	500 l/min (132 gpm)
Manifold:	Steel
Weight:	14.92 kg (32,87 lbs)
Contamination class to ISO 4406: See technical spec.	
MTTF _d : 150 - 1200 years: See technical spec.	



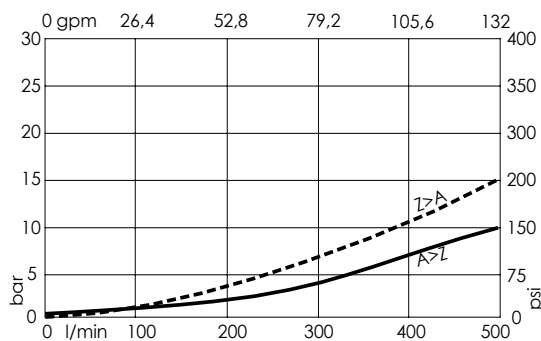
Dimensions: mm [inches]

NOTES

When correctly adjusted for the specific excavator installation, these valves meet the requirement of ISO 8643.

For other configurations/quick codes not available in this catalogue page please consult factory

CURVES



ORDERING CODES

Quick code	Description	Main ports size	Standard setting	Adjustment range	Pressure increase
ML000333	MLNT-500-SAGN-00-S11-N420	Z,A: 1"-1/4 SAE 6000 E,T,Pil,M: G1/4" M1: G1/8"	① 5,5 bar Cracking press. (75 psi Cracking press.) ② 420 bar @5 l/min (6000 psi @1.3 qpm)	① 2-10 bar (25-150 psi) ② 200-420 bar (2900-6000 psi)	① 2 bar/turn (25 psi/turn) ② 236 bar/turn (3400 psi/turn)

Revision B1