

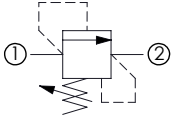
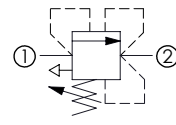
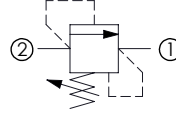
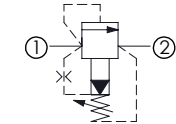
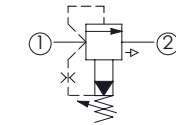
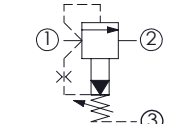


ATLANTIC
Fluid Tech

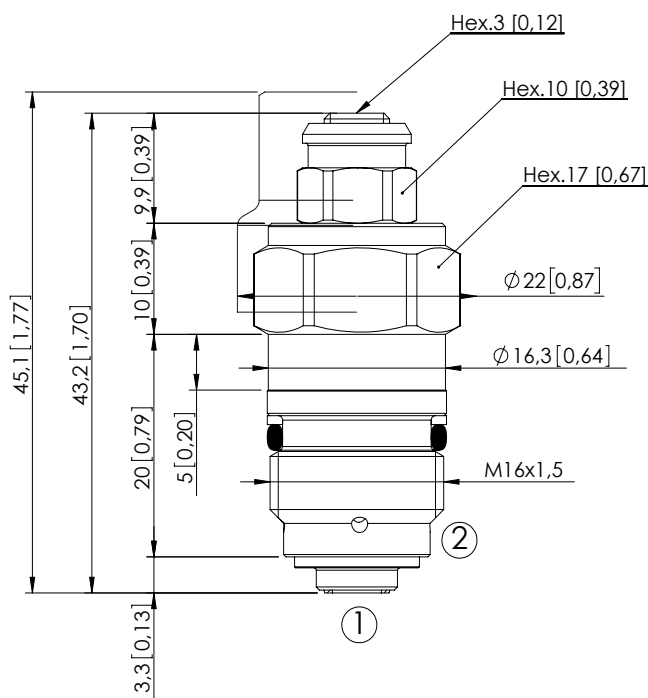
SECTION 1

Relief Valves

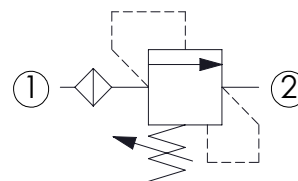
RELIEF VALVES

| Hydraulic scheme | Valve description | Valve type | Rated flow l/min (gpm) | Max. pressure bar (psi) | Installation | Main port size or cavity type | Page |
|---|-------------------------------|--|---------------------------|----------------------------|--------------|----------------------------------|--------------------------------------|
|  | CPLN-005-DPNA | Direct acting, poppet type | 1,5 (0,4) | 460 (6600) | Cartridge | VP000005 | 1.01. 010 |
| | CPLN-020-DPNA | Direct acting, poppet type | 20 (5) | 420 (6000) 350 (5000) | Cartridge | SAE-08-2N | 1.01. 020 1.01. 030 |
| | KPLN-020-DPNA | Direct acting, poppet type | 20 (5) | 350 (5000) | In line | G1/4" - G3/8" | 1.01. 040 |
| | CPLN-XXX-DHNA | Direct acting, poppet type | 30 (8) | 500 (7200) | Cartridge | VP000008 | 1.01. 050 |
| | CPLN-080-DPNA | Direct acting, poppet type | 80 (21) | 420 (6000) | Cartridge | VP000086 | 1.01. 060 |
| | KPLN-080-DPNA | Direct acting, poppet type | 80 (21) | 350 (5000) | In line | G1/2" - G3/4" | 1.01. 070 |
|  | CPLT-005-DPNA | Direct acting, with filter, compensated | 1,5 (0,4) | 460 (6700) | Cartridge | VP000005 | 1.02. 080 |
| | CPLT-030-DHNA | Direct acting, poppet type, compensated | 30 (8) | 420 (6000) | Cartridge | VP000008 | 1.02. 090 |
| | CPLV-080-DHNA | Direct acting, poppet type, chamber vented | 80 (21) | 350 (5000) | Cartridge | SAE-16-3C | 1.02. 100 |
|  | CPLN-040-DHGD | Differential, poppet type | 40 (11) | 350 (5000) | Cartridge | VP000080 | 1.03. 110 |
| | CPLN-090-DHGA | Direct acting, poppet type | 90 (24) | 380 (5400) | Cartridge | VP000249 | 1.03. 120 |
|  | CPLN-120-PSNA | Pilot operated, spool type | 120 (32) | 350 (5000) | Cartridge | SAE-10-2N | 1.04. 130 |
| | KPLN-120-PSNA | Pilot operated, spool type | 120 (32) | 350 (5000) | In line | G3/8" - G1/2" | 1.04. 140 |
| | CPLN-300-PSNA | Pilot operated, spool type | 300 (79) | 350 (5000) | Cartridge | SAE-16-2N | 1.04. 150 |
| | CPLN-500-PHNA | Pilot operated, spool type | 500 (132) | 350 (5000) | Cartridge | SAE-20-2N | 1.04. 160 |
|  | CPLT-120-PSNA | Pilot operated, spool type, compensated | 120 (32) | 350 (5000) | Cartridge | SAE-10-2N | 1.05. 170 |
|  | CPLV-120-PSNA | Pilot operated, spool type | 120 (32) | 350 (5000) | Cartridge | SAE-10-2N | 1.06. 180 |

RELIEF VALVE

CPLN-005-DPNADIRECT ACTING
WITH FILTER

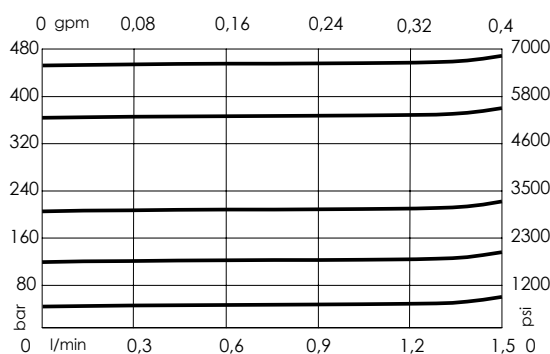
Dimensions: mm [inches]

**SPECIFICATIONS**

| | |
|----------------------------------|--|
| Max. operating pressure: | 460 bar (6700 psi) |
| Rated flow: | 1,5 l/min (0,4 gpm) |
| Cavity: | VP000005 |
| Weight: | 0,05 kg (0,11 lbs) |
| Contamination class to ISO 4406: | See technical spec. |
| Seal kit: | RC700005 |
| Installation torque: | 27 - 33 Nm (20 - 24 ft-lb) |
| MTFa: | 150 - 1200 years: See technical spec. |

NOTES

For other configurations/quick codes not available in this catalogue page please consult factory

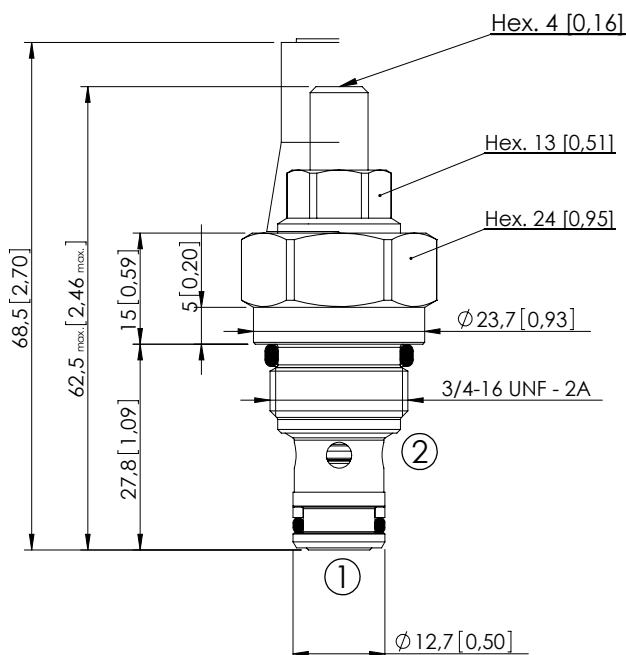
SEALING CAPOrdering code:
ST000014**CURVES****ORDERING CODES**

| Quick code | Description | Standard setting (cracking pressure) | Adjustment range | Pressure increase |
|------------|---------------------------|--------------------------------------|------------------------------------|-------------------------------------|
| CP000015 | CPLN-005-DPNA-PF-005-N460 | 460 bar (6700 psi) | 150-460 bar (2100-6700 psi) | 236 bar/turn (3400 psi/turn) |
| CP000002 | CPLN-005-DPNA-PF-005-N350 | 350 bar (5000 psi) | 120-350 bar (1700-5000 psi) | 165 bar/turn (2400 psi/turn) |
| CP000029 | CPLN-005-DPNA-PF-005-N200 | 200 bar (2800 psi) | 100-200 bar (1500-2900 psi) | 75 bar/turn (1100 psi/turn) |
| CP000030 | CPLN-005-DPNA-PF-005-N100 | 100 bar (1400 psi) | 25-100 bar (400-1500 psi) | 41 bar/turn (600 psi/turn) |
| CP000277 | CPLN-005-DPNA-PF-005-N040 | 40 bar (600 psi) | 10-40 bar (150-600 psi) | 22 bar/turn (300 psi/turn) |
| | | | | |

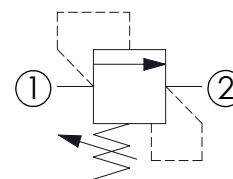
Revision A1

RELIEF VALVE

CPLN-020-DPNA

DIRECT ACTING
STABILIZED PISTON

Dimensions: mm [inches]



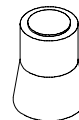
SPECIFICATIONS

| | |
|----------------------------------|---------------------------------------|
| Max. operating pressure: | 420 bar (6000 psi) |
| Rated flow: | 20 l/min (5 gpm) |
| Cavity: | SAE-08-2N |
| Weight: | 0,1 kg (0,22 lbs) |
| Contamination class to ISO 4406: | See technical spec. |
| Seal kit: | RA700081 |
| Installation torque: | 45 - 50 Nm (33 - 37 ft-lb) |
| MTFa: | 150 - 1200 years: See technical spec. |

NOTES

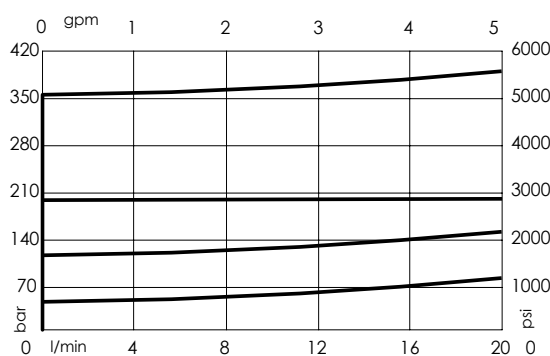
For other configurations/quick codes not available in this catalogue page please consult factory

SEALING CAP



Ordering code:
AT000020

CURVES



ORDERING CODES

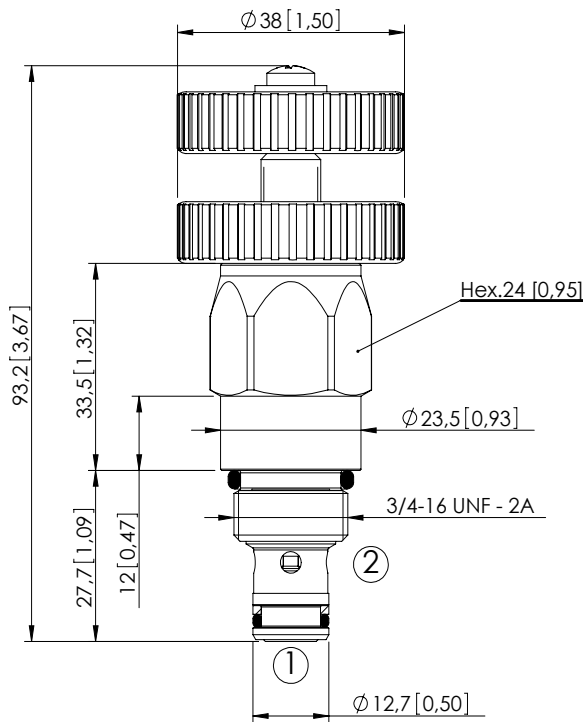
| Quick code | Description | Standard setting (cracking pressure) | Adjustment range | Pressure increase |
|------------|---------------------------|--------------------------------------|-----------------------------|------------------------------|
| CP000168 | CPLN-020-DPNA-SN-S08-N420 | 350 bar (5000 psi) | 200-420 bar (2800-6000 psi) | 207 bar/turn (3000 psi/turn) |
| CP000025 | CPLN-020-DPNA-SN-S08-N350 | 350 bar (5000 psi) | 175-350 bar (2500-5000 psi) | 177 bar/turn (2600 psi/turn) |
| CP000007 | CPLN-020-DPNA-SN-S08-N200 | 200 bar (2900 psi) | 105-210 bar (1500-3000 psi) | 80 bar/turn (1200 psi/turn) |
| CP000028 | CPLN-020-DPNA-SN-S08-N100 | 100 bar (1400 psi) | 35-140 bar (500-2000 psi) | 49 bar/turn (700 psi/turn) |
| CP000027 | CPLN-020-DPNA-SN-S08-N050 | 50 bar (700 psi) | 10-70 bar (150-1000 psi) | 26 bar/turn (350 psi/turn) |

Revision A1

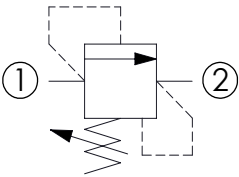
RELIEF VALVE

CPLN-020-DPNA

DIRECT ACTING



Dimensions: mm [inches]



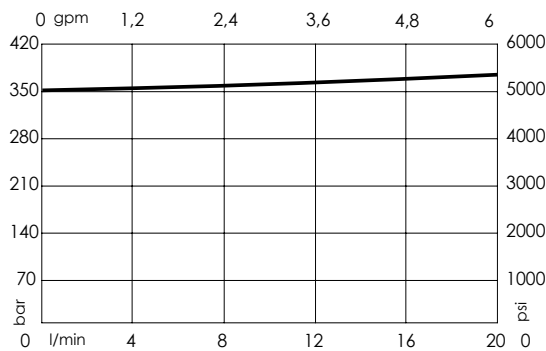
SPECIFICATIONS

| | |
|----------------------------------|---------------------------------------|
| Max. operating pressure: | 350 bar (5000 psi) |
| Rated flow: | 20 l/min (6 gpm) |
| Cavity: | SAE-08-2N |
| Weight: | 0,18 kg (0,4 lbs) |
| Contamination class to ISO 4406: | See technical spec. |
| Seal kit: | RA700081 |
| Installation torque: | 45 - 50 Nm (33 - 37 ft-lb) |
| MTTFd: | 150 - 1200 years: See technical spec. |

NOTES

For other configurations/quick codes not available in this catalogue page please consult factory

CURVES



ORDERING CODES

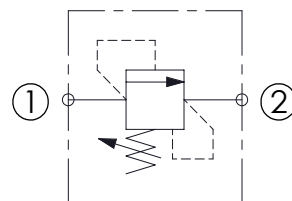
| Quick code | Description | Standard setting (cracking pressure) | Adjustment range | Pressure increase |
|------------|---------------------------|--------------------------------------|---------------------------|----------------------------|
| CP000173 | CPLN-020-DPNA-VS-S08-N350 | 350 bar (5000 psi) | 20-350 bar (300-5000 psi) | 56 bar/turn (800 psi/turn) |
| | | | | |
| | | | | |
| | | | | |
| | | | | |
| | | | | |

Revision A1

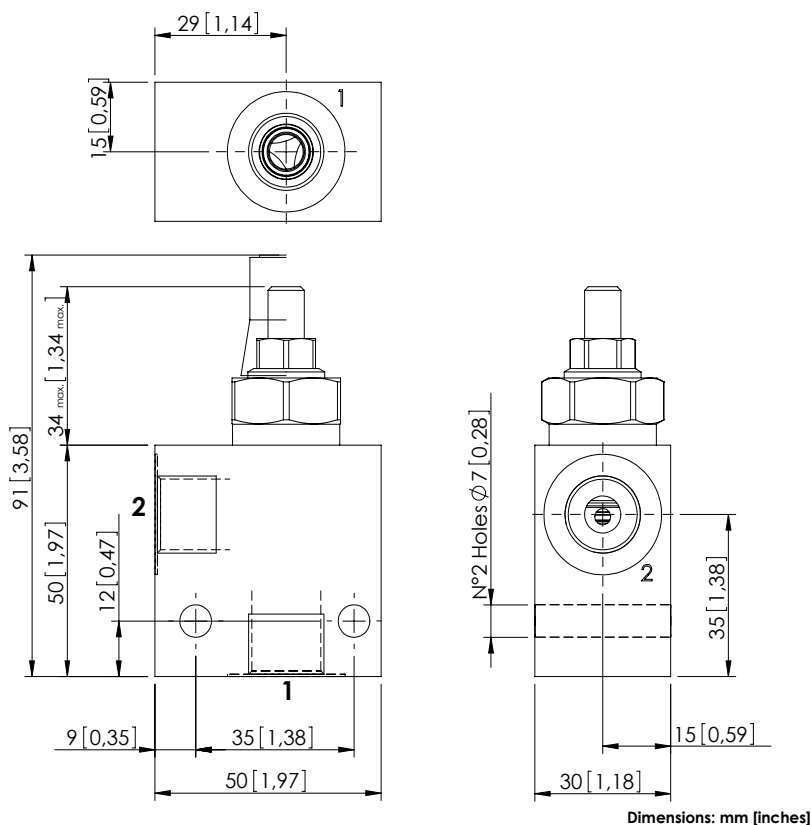
KPLN-020-DPNA



ATLANTIC
Fluid Tech



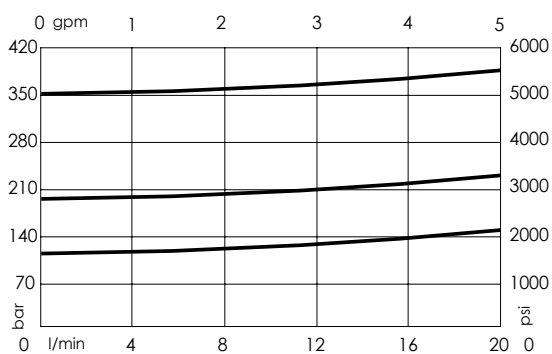
| | |
|--|---------------------------|
| Max. operating pressure: | 350 bar (5000 psi) |
| Rated flow: | 20 l/min (5 gpm) |
| Manifold: | Aluminium |
| Weight: | 0,25 kg (0,55 lbs) |
| Contamination class to ISO 4406: See technical spec. | |
| MTTF_d: 150 - 1200 years: See technical spec. | |



For other configurations/quick codes not available in this catalogue page please consult factory

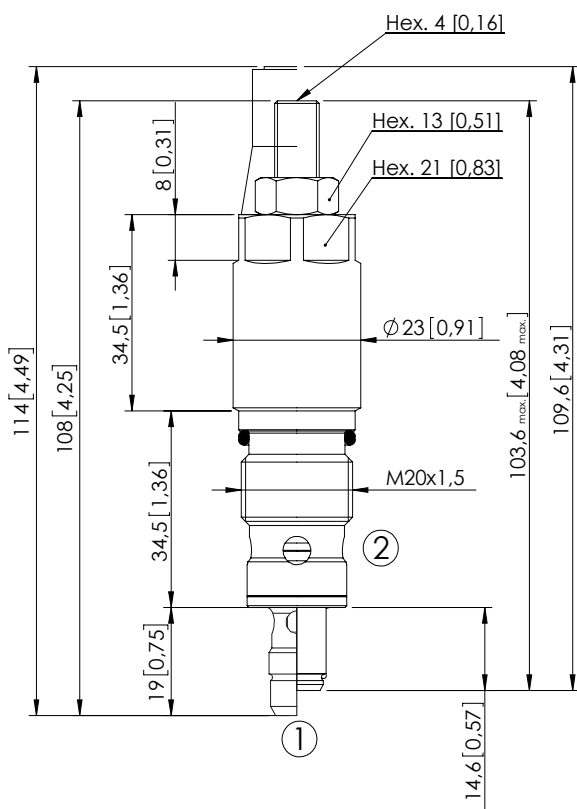
Ordering code:
AT000020

CURVES

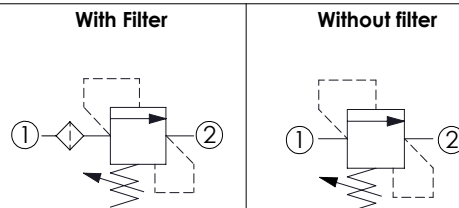


| Quick code | Description | Main ports size | Standard setting Q=5 l/min (1,3 gpm) | Adjustment range | Pressure increase |
|------------|---------------------------|---------------------|---|---------------------------------------|--|
| KP000010 | KPLN-020-DPNA-SN-G38-N350 | P,T : G 3/8" | 350 bar (5000 psi) | 175-350 bar (2500-5000 psi) | 177 bar/turn (2500 psi/turn) |
| KP000037 | KPLN-020-DPNA-SN-G38-N200 | P,T : G 3/8" | 200 bar (2900 psi) | 105-210 bar (1500-3000 psi) | 80 bar/turn (1200 psi/turn) |
| KP000038 | KPLN-020-DPNA-SN-G38-N100 | P,T : G 3/8" | 100 bar (1400 psi) | 35-140 bar (500-2000 psi) | 49 bar/turn (700 psi/turn) |
| KP000008 | KPLN-020-DPNA-SN-G14-N350 | P,T : G 1/4" | 350 bar (5000 psi) | 175-350 bar (2500-5000 psi) | 177 bar/turn (2500 psi/turn) |
| KP000039 | KPLN-020-DPNA-SN-G14-N200 | P,T : G 1/4" | 200 bar (2900 psi) | 105-210 bar (1500-3000 psi) | 80 bar/turn (1200 psi/turn) |
| KP000040 | KPLN-020-DPNA-SN-G14-N100 | P,T : G 1/4" | 100 bar (1400 psi) | 35-140 bar (500-2000 psi) | 49 bar/turn (700 psi/turn) |

**DIRECT ACTING
STABILIZED PISTON
HARDENED SEAT**



Dimensions: mm [inches]



SPECIFICATIONS

| | |
|---|--|
| Max. operating pressure: | 500 bar (7200 psi) |
| Max. operating pressure on T: | 350 bar (5000 psi) |
| Cavity: | VP000008 |
| Weight: | 0,17 kg (0,38 lbs) |
| Contamination class to ISO 4406: | See technical spec. |
| Seal kit: | RC700008 |
| Installation torque: | 40 - 45 Nm (29 - 33 ft-lb) |
| MTF_d: | 150 - 1200 years: See technical spec. |
| Filtration: | 300 micron |

NOTES

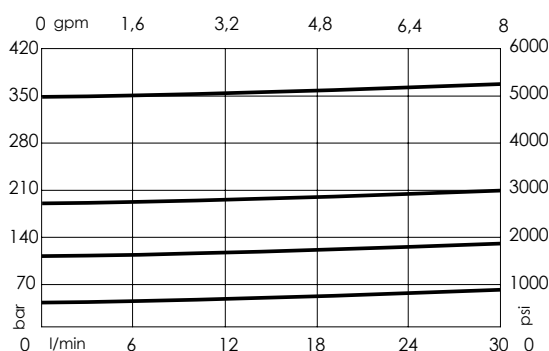
For other configurations/quick codes not available in this catalogue page please consult factory

SEALING CAP



Ordering code:
AT000020

CURVES



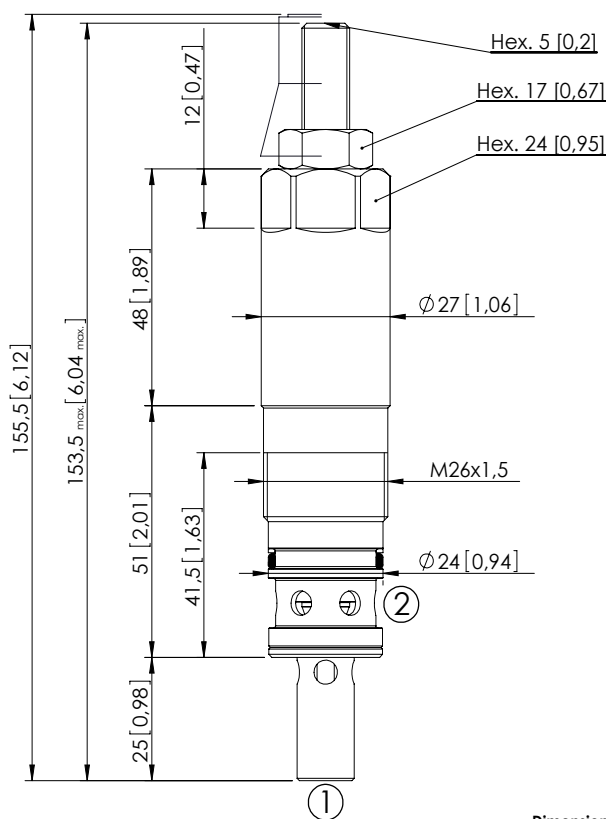
ORDERING CODES

| Quick code | Description | Rated flow | Standard setting Q=5 l/min (1,3 gpm) | Adjustment range | Pressure increase | Option |
|------------|---------------------------|---------------------|---|----------------------------------|---------------------------------|----------------|
| CP000401 | CPLN-023-DHNA-HF-008-N500 | 20 l/min (5 gpm) | 350 bar (5000 psi) | 150 - 500 bar (2200-7200 psi) | 150 bar/turn (2200 psi/turn) | With Filter |
| CP000411 | CPLN-030-DHNA-HF-008-N420 | 30 l/min (8 gpm) | 350 bar (5000 psi) | 250-420 bar (3600-6000 psi) | 104 bar/turn (1500 psi/turn) | With Filter |
| CP000082 | CPLN-030-DHNA-HN-008-N350 | 30 l/min (8 gpm) | 350 bar (5000 psi) | 100-350 bar (1400-5000 psi) | 91 bar/turn (1300 psi/turn) | Without Filter |
| CP000083 | CPLN-030-DHNA-HN-008-N200 | 30 l/min (8 gpm) | 200 bar (2900 psi) | 50-210 bar (700-3000 psi) | 42 bar/turn (600 psi/turn) | Without Filter |
| CP000084 | CPLN-030-DHNA-HN-008-N100 | 30 l/min (8 gpm) | 100 bar (1400 bar) | 30-100 bar (400-1400 psi) | 20 bar/turn (300 psi/turn) | Without Filter |
| CP000085 | CPLN-030-DHNA-HN-008-N050 | 30 l/min (8 gpm) | 50 bar (700 psi) | 10-50 bar (150-700 psi) | 10 bar/turn (150 psi/turn) | Without Filter |

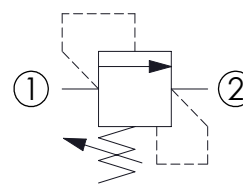
Revision A1

RELIEF VALVE

CPLN-080-DPNA

DIRECT ACTING
STABILIZED PISTON

Dimensions: mm [inches]



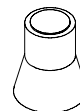
SPECIFICATIONS

| | |
|----------------------------------|---------------------------------------|
| Max. operating pressure: | 420 bar (6000 psi) |
| Rated flow: | 80 l/min (21 gpm) |
| Cavity: | VP000086 |
| Weight: | 0,34 kg (0,75 lbs) |
| Contamination class to ISO 4406: | See technical spec. |
| Seal kit: | RC700086 |
| Installation torque: | 80 - 95 Nm (59 - 70 ft-lb) |
| MTTF _d : | 150 - 1200 years: See technical spec. |

NOTES

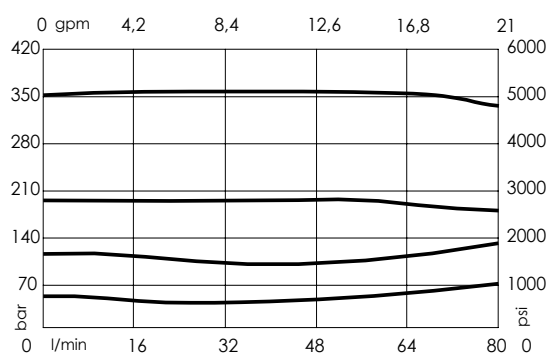
For other configurations/quick codes not available in this catalogue page please consult factory

SEALING CAP



Ordering code:
AT000021

CURVES

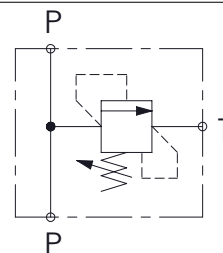


ORDERING CODES

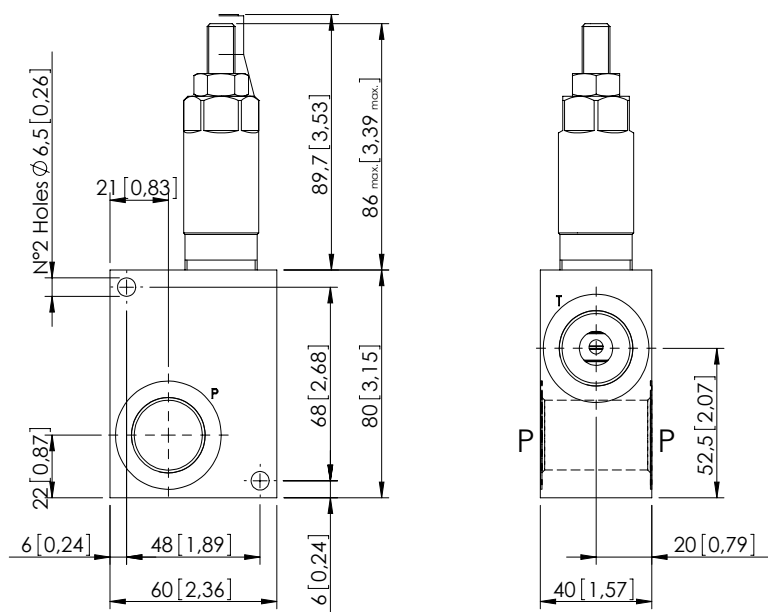
| Quick code | Description | Standard setting (cracking pressure) | Adjustment range | Pressure increase |
|------------|---------------------------|--------------------------------------|-----------------------------|----------------------------|
| CP000180 | CPLN-080-DPNA-HN-086-N420 | 350 bar (5000 psi) | 150-420 bar (2100-6000 psi) | 53 bar/turn (750 psi/turn) |
| CP000026 | CPLN-080-DPNA-HN-086-N350 | 350 bar (5000 psi) | 100-350 bar (1400-5000 psi) | 42 bar/turn (600 psi/turn) |
| CP000076 | CPLN-080-DPNA-HN-086-N200 | 200 bar (2900 psi) | 60-210 bar (900-3000 psi) | 24 bar/turn (350 psi/turn) |
| CP000077 | CPLN-080-DPNA-HN-086-N100 | 100 bar (1400 psi) | 25-100 bar (400-1400 psi) | 13 bar/turn (200 psi/turn) |
| CP000099 | CPLN-080-DPNA-HN-086-N050 | 50 bar (700 psi) | 5-50 bar (100-500 psi) | 9 bar/turn (150 psi/turn) |

Revision B1

RELIEF VALVE IN BODY

KPLN-080-DPNADIRECT ACTING
STABILIZED PISTON**SPECIFICATIONS**

| | |
|----------------------------------|---------------------------------------|
| Max. operating pressure: | 350 bar (5000 psi) |
| Rated flow: | 80 l/min (21 gpm) |
| Manifold: | Aluminium |
| Weight: | 0,68 kg (1,5 lbs) |
| Contamination class to ISO 4406: | See technical spec. |
| MTTF _d : | 150 - 1200 years: See technical spec. |

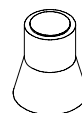
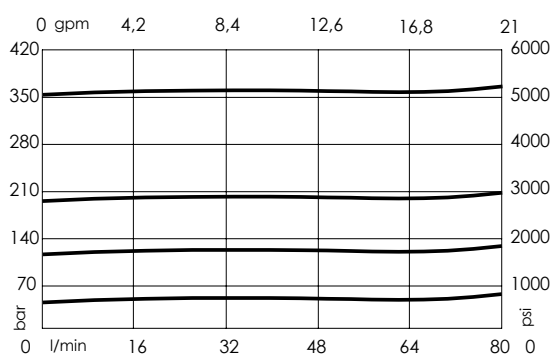


Dimensions: mm [inches]

NOTES

Codes available with steel manifold.

For other configurations/quick codes not available in this catalogue page please consult factory

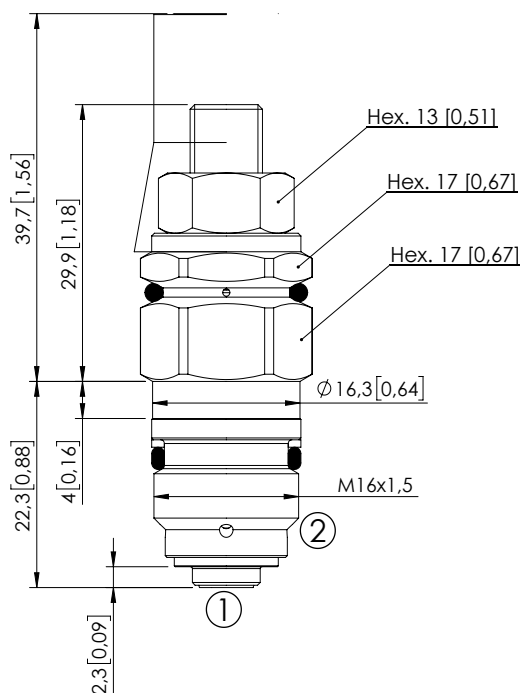
SEALING CAPOrdering code:
AT000021**CURVES****ORDERING CODES**

| Quick code | Description | Main ports size | Standard setting Q=5 l/min (1,3 gpm) | Adjustment range | Pressure increase |
|------------|---------------------------|-----------------|---|-----------------------------|----------------------------|
| KP000018 | KPLN-080-DPNA-HN-G34-N350 | P,T : G 3/4" | 350 bar (5000 psi) | 100-350 bar (1400-5000 psi) | 42 bar/turn (600 psi/turn) |
| KP000070 | KPLN-080-DPNA-HN-G34-N200 | P,T : G 3/4" | 200 bar (2900 psi) | 60-210 bar (900-3000 psi) | 24 bar/turn (350 psi/turn) |
| KP000069 | KPLN-080-DPNA-HN-G34-N100 | P,T : G 3/4" | 100 bar (1400 psi) | 25-100 bar (350-1400 psi) | 13 bar/turn (200 psi/turn) |
| KP000098 | KPLN-080-DPNA-HN-G34-N050 | P,T : G 3/4" | 50 bar (700 psi) | 5-50 bar (100-700 psi) | 9 bar/turn (150 psi/turn) |
| KP000016 | KPLN-080-DPNA-HN-G12-N350 | P,T : G 1/2" | 350 bar (5000 psi) | 100-350 bar (1400-5000 psi) | 42 bar/turn (600 psi/turn) |
| KP000090 | KPLN-080-DPNA-HN-G12-N200 | P,T : G 1/2" | 200 bar (2900 psi) | 60-210 bar (900-3000 psi) | 24 bar/turn (350 psi/turn) |
| KP000091 | KPLN-080-DPNA-HN-G12-N100 | P,T : G 1/2" | 100 bar (1400 psi) | 25-100 bar (350-1400 psi) | 13 bar/turn (200 psi/turn) |
| KP000099 | KPLN-080-DPNA-HN-G12-N050 | P,T : G 1/2" | 50 bar (700 psi) | 5-50 bar (100-700 psi) | 9 bar/turn (150 psi/turn) |

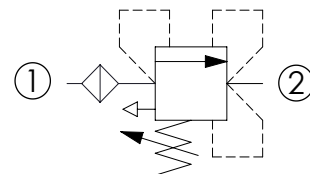
Revision A1

RELIEF VALVE

CPLT-005-DPNA

DIRECT ACTING
WITH FILTER
COMPENSATED

Dimensions: mm [inches]



SPECIFICATIONS

| | |
|----------------------------------|---------------------------------------|
| Max. operating pressure: | 460 bar (6700 psi) |
| Rated flow: | 1,5 l/min (0,4 gpm) |
| Cavity: | VP000005 |
| Weight: | 0,06 kg (0,11 lbs) |
| Contamination class to ISO 4406: | See technical spec. |
| Seal kit: | RC700005 |
| Installation torque: | 27 - 33 Nm (20 - 24 ft-lb) |
| MTF _d : | 150 - 1200 years: See technical spec. |

NOTES

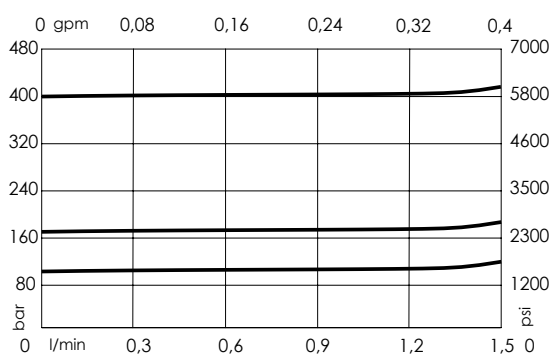
For other configurations/quick codes not available in this catalogue page please consult factory

SEALING CAP



Ordering code:
AT000020

CURVES



ORDERING CODES

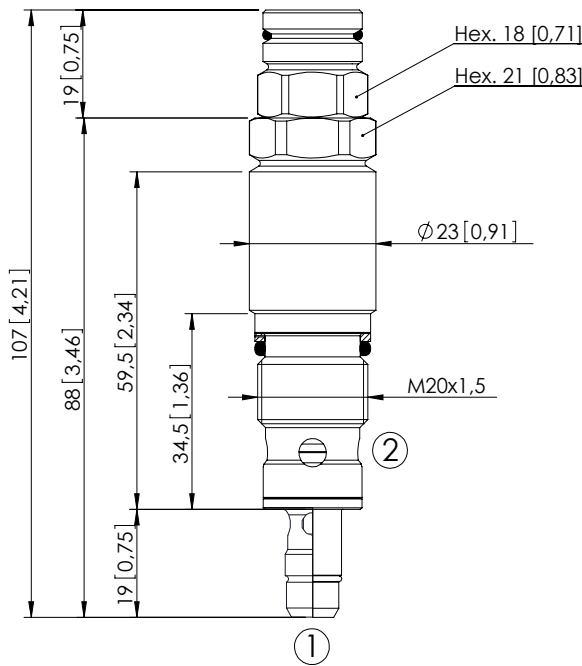
| Quick code | Description | Standard setting (Cracking Pressure) | Adjustment range | Pressure increase |
|------------|---------------------------|---|--------------------------------|------------------------------|
| CP000262 | CPLT-005-DPNA-HF-005-N460 | 400 bar (5800 psi) | 150-460 bar (2100-6700 psi) | 296 bar/turn (4300 psi/turn) |
| CP000263 | CPLT-005-DPNA-HF-005-N200 | 170 bar (2400 psi) | 100-200 bar (1400-2900 psi) | 93 bar/turn (1300 psi/turn) |
| CP000454 | CPLT-005-DPNA-HF-005-N100 | 100 bar (1400 psi) | 25-100 bar (350-1400 psi) | 41 bar/turn (600 psi/turn) |
| | | | | |
| | | | | |
| | | | | |

Revision B1

RELIEF VALVE

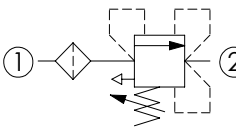
CPLT-030-DHNA

DIRECT ACTING COMPENSATED
STABILIZED PISTON
HARDENED SEAT

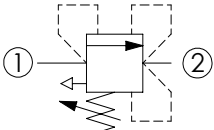


Dimensions: mm [inches]

With filter



Without filter



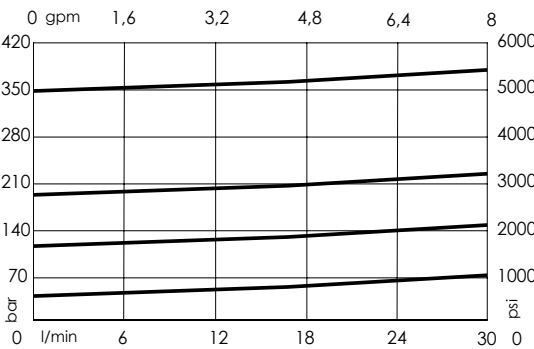
SPECIFICATIONS

| | |
|----------------------------------|---------------------------------------|
| Max. operating pressure: | 420 bar (6000 psi) |
| Max. operating pressure on T: | 350 bar (5000 psi) |
| Rated flow: | 30 l/min (8 gpm) |
| Cavity: | VP000008 |
| Weight: | 0,2 kg (0,44 lbs) |
| Contamination class to ISO 4406: | See technical spec. |
| Seal kit: | RC700008 |
| Installation torque: | 45 - 50 Nm (33 - 37 ft-lb) |
| MTTF _d : | 150 - 1200 years: See technical spec. |
| Filtration: | 300 micron |

NOTES

For other configurations/quick codes not available in this catalogue page please consult factory

CURVES

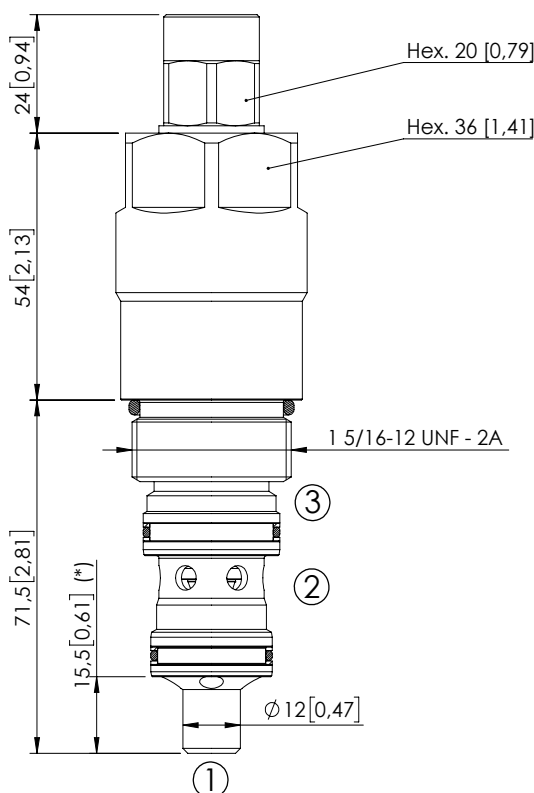


ORDERING CODES

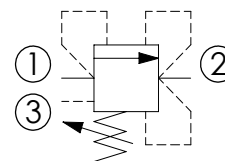
| Quick code | Description | Standard setting Q=5 l/min (1,3 gpm) | Adjustment range | Pressure increase | Option |
|------------|---------------------------|---|-----------------------------|------------------------------|----------------|
| CP000410 | CPLT-030-DHNA-HF-008-N420 | 350 bar (5000 psi) | 250-420 bar (3600-6000 psi) | 104 bar/turn (1500 psi/turn) | With Filter |
| CP000095 | CPLT-030-DHNA-HN-008-N350 | 350 bar (5000 psi) | 100-350 bar (1400-5000 psi) | 91 bar/turn (1300 psi/turn) | Without Filter |
| CP000096 | CPLT-030-DHNA-HN-008-N200 | 200 bar (2900 psi) | 50-210 bar (700-3000 psi) | 42 bar/turn (600 psi/turn) | Without Filter |
| CP000097 | CPLT-030-DHNA-HN-008-N100 | 100 bar (1400 psi) | 30-100 bar (400-1400 psi) | 20 bar/turn (300 psi/turn) | Without Filter |
| CP000098 | CPLT-030-DHNA-HN-008-N050 | 50 bar (700 psi) | 10-50 bar (150-700 psi) | 10 bar/turn (150 psi/turn) | Without Filter |

Revision A1

RELIEF VALVE

CPLV-080-DHNADIRECT ACTING
STABILIZED PISTON
CHAMBER VENTED

Dimensions: mm [inches]

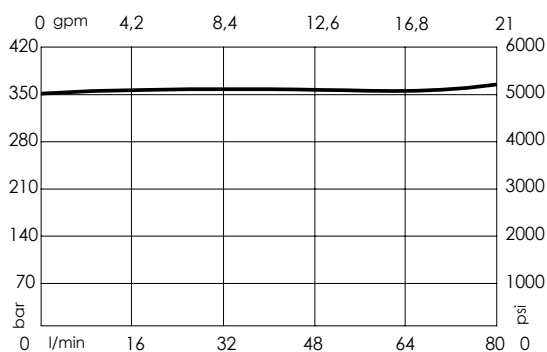
**SPECIFICATIONS**

| | |
|----------------------------------|---------------------------------------|
| Max. operating pressure: | 350 bar (5000 psi) |
| Rated flow: | 80 l/min (21 gpm) |
| Cavity: | SAE-16-3C |
| Weight: | 0,75 kg (1,65 lbs) |
| Contamination class to ISO 4406: | See technical spec. |
| Seal kit: | RB700089 |
| Installation torque: | 118 - 132 Nm (87 - 97 ft-lb) |
| MTTF _d : | 150 - 1200 years: See technical spec. |

NOTES

(*) The cartridge exceed overall dimension of the standard cavity into port 1.

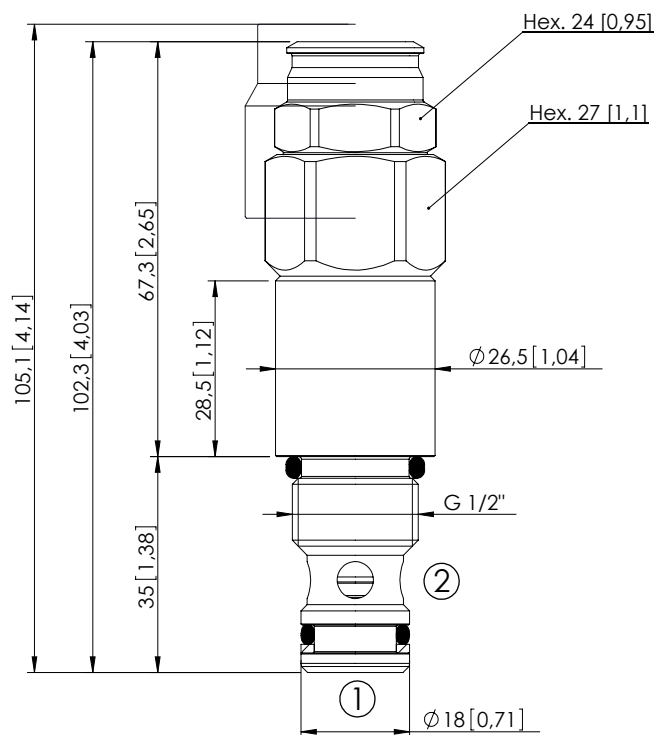
For other configurations/quick codes not available in this catalogue page please consult factory

CURVES**ORDERING CODES**

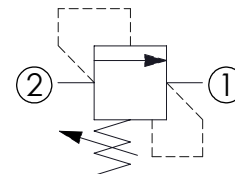
| Quick code | Description | Standard setting (cracking pressure) | Adjustment range | Pressure increase |
|------------|---------------------------|--------------------------------------|-----------------------------|----------------------------|
| CP000171 | CPLV-080-DHNA-HN-S16-V420 | 400 bar (5700 psi) | 150-420 bar (2100-6000 psi) | 53 bar/turn (750 psi/turn) |
| CP000513 | CPLV-080-DHNA-HN-S16-V350 | 350 bar (5000 psi) | 100-350 bar (1400-5000 psi) | 42 bar/turn (600 psi/turn) |
| CP000501 | CPLV-080-DHNA-HN-S16-V200 | 200 bar (2900 psi) | 60-210 bar (900-3000 psi) | 24 bar/turn (350 psi/turn) |
| CP000514 | CPLV-080-DHNA-HN-S16-V100 | 100 bar (1400 psi) | 25-100 bar (400-1400 psi) | 13 bar/turn (200 psi/turn) |
| CP000515 | CPLV-080-DHNA-HN-S16-V050 | 50 bar (700 psi) | 5-50 bar (100-700 psi) | 9 bar/turn (150 psi/turn) |

Revision A1

RELIEF VALVE

CPLN-040-DHGDDIFFERENTIAL AREA
POPPET TYPE

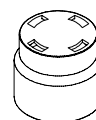
Dimensions: mm [inches]

**SPECIFICATIONS**

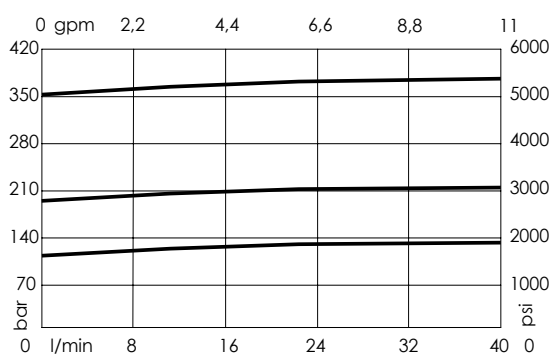
| | |
|----------------------------------|---------------------------------------|
| Max. operating pressure: | 350 bar (5000 psi) |
| Rated flow: | 40 l/min (11 gpm) |
| Cavity: | VP000080 |
| Weight: | 0,31 kg (0,68 lbs) |
| Contamination class to ISO 4406: | See technical spec. |
| Seal kit: | RC900080 |
| Installation torque: | 95 - 105 Nm (70 - 77 ft-lb) |
| MTF _d : | 150 - 1200 years: See technical spec. |

NOTES

For other configurations/quick codes not available in this catalogue page please consult factory

SEALING CAP

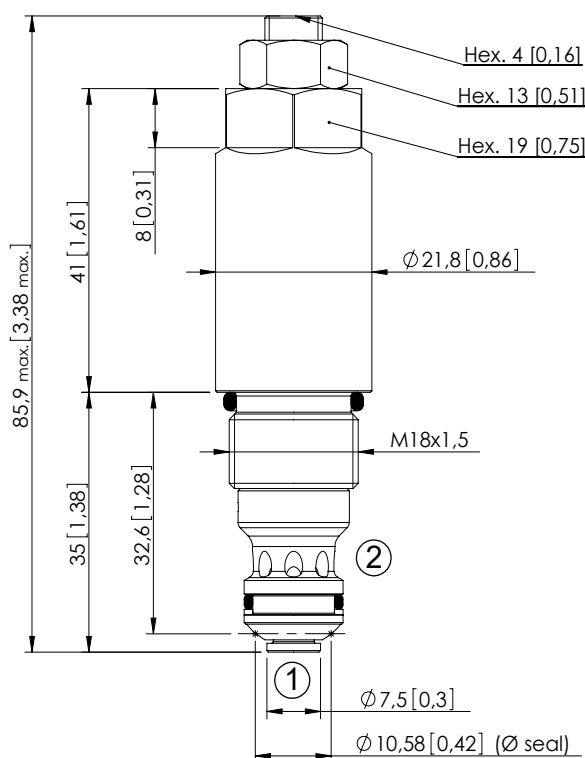
Ordering code:
PT000258

CURVES**ORDERING CODES**

| Quick code | Description | Standard setting (cracking pressure) | Adjustment range | Pressure increase |
|------------|---------------------------|--------------------------------------|-----------------------------|------------------------------|
| CP000036 | CPLN-040-DHGD-HN-080-N350 | 350 bar (5000 psi) | 100-350 bar (1400-5000 psi) | 119 bar/turn (1700 psi/turn) |
| CP000088 | CPLN-040-DHGD-HN-080-N200 | 200 bar (2900 psi) | 50-210 bar (700-3000 psi) | 63 bar/turn (900 psi/turn) |
| CP000223 | CPLN-040-DHGD-HN-080-N100 | 100 bar (1400 psi) | 30-100 bar (400-1400 psi) | 30 bar/turn (400 psi/turn) |
| | | | | |
| | | | | |
| | | | | |

Revision B1

CPLN-090-DHGA



| | |
|----------------------------------|---------------------------------------|
| Max. operating pressure: | 380 bar (5000 psi) |
| Rated flow: | 90 l/min (24 gpm) |
| Cavity: | VP000249 |
| Weight: | 0,15 kg (0,33 lbs) |
| Contamination class to ISO 4406: | See technical spec. |
| Seal kit: | RC900249 |
| Installation torque: | 45 - 50 Nm (33 - 37 ft-lb) |
| MTTF _d : | 150 - 1200 years: See technical spec. |

For other configurations/quick codes not available in this catalogue page please consult factory

The graph shows the relationship between flow rate (l/min) and pressure drop (bar) for a 2000 µm mesh. The left y-axis represents pressure drop in bar (0 to 420), and the right y-axis represents flow rate in l/min (0 to 6000). The x-axis represents flow rate in l/min (0 to 90). The graph shows several curves representing different pressure drops. A label '2 > 1' is placed near the bottom curve.

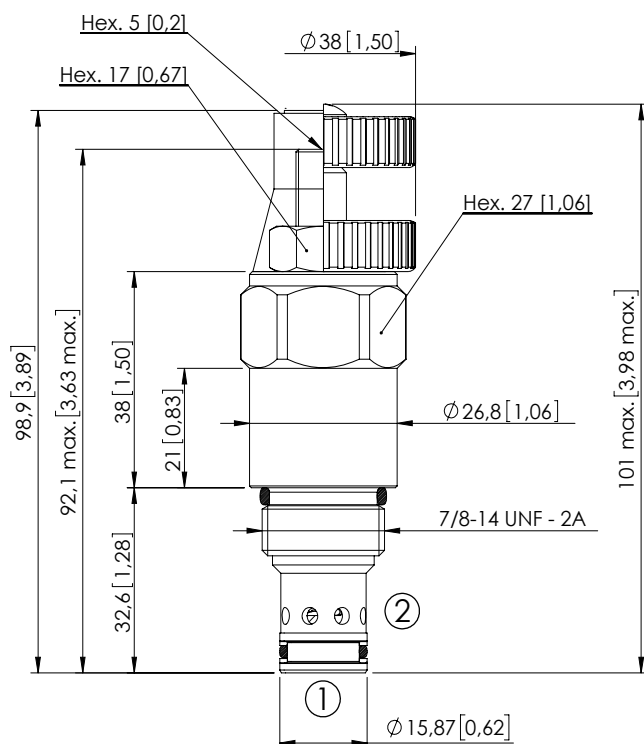
| Quick code | Description | Standard setting (cracking pressure) | Adjustment range | Pressure increase |
|------------|---------------------------|---|--------------------------------|------------------------------|
| CP000105 | CPLN-090-DHGA-HN-249-N380 | 380 bar (5400 psi) | 320-380 bar (4600-5500 psi) | 101 bar/turn (1500 psi/turn) |
| CP000101 | CPLN-090-DHGA-HN-249-N320 | 320 bar (4500 psi) | 270-320 bar (3900-4600 psi) | 67 bar/turn (950 psi/turn) |
| CP000104 | CPLN-090-DHGA-HN-249-N270 | 270 bar (3800 psi) | 200-270 bar (2900-3900 psi) | 44 bar/turn (650 psi/turn) |
| CP000103 | CPLN-090-DHGA-HN-249-N200 | 200 bar (2900 psi) | 120-200 bar (1700-2900) psi | 30 bar/turn (400 psi/turn) |
| CP000102 | CPLN-090-DHGA-HN-249-N120 | 120 bar (1700 psi) | 70-120 bar (1000-1700 psi) | 18 bar/turn (250 psi/turn) |
| CP000120 | CPLN-090-DHGA-HN-249-N070 | 70 bar (1000 psi) | 10-70 bar (150-1000 psi) | 8 bar/turn (100 psi/turn) |

Rev. 09/23

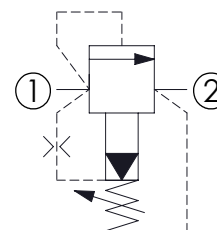
1.03.120

RELIEF VALVE

CPLN-120-PSNA

PILOT OPERATED
SPOOL TYPE

Dimensions: mm [inches]



SPECIFICATIONS

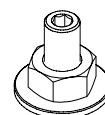
| | |
|----------------------------------|---|
| Max. operating pressure: | 350 bar (5000 psi) |
| Rated flow: | 120 l/min (32 gpm) |
| Cavity: | SAE-10-2N |
| Weight: | 0,24 kg (0,53 lbs) |
| Contamination class to ISO 4406: | See technical spec. |
| Seal kit: | RB700082 |
| Installation torque: | 55 - 62 Nm (40 - 46 ft-lb) |
| MTTF _d : | 150 - 1200 years: See technical spec. |
| Leakage: | 200 cm ³ /min @200 bar 12,2 in ³ /min @ 2800 psi |

NOTES

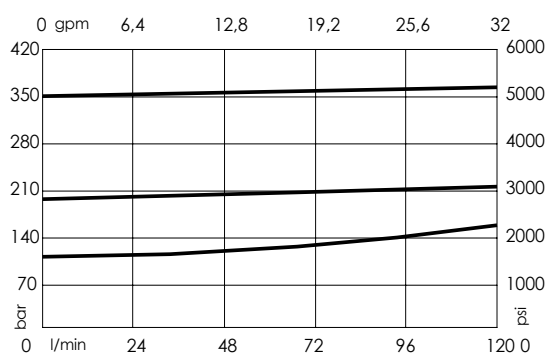
For other configurations/quick codes not available in this catalogue page please consult factory

OPTIONS

SEALING CAP

Adjustment
with
ScrewAdjustment
with
HandknobOrdering code:
AT000022

CURVES



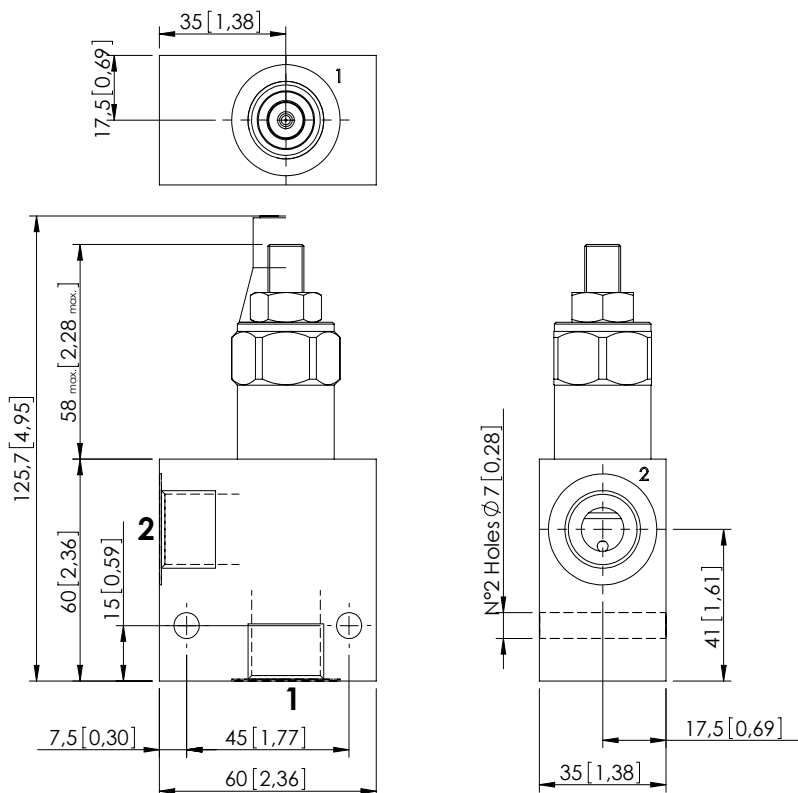
ORDERING CODES

| Quick code | Description | Standard setting Q=5 l/min (1,3 gpm) | Adjustment range | Pressure increase | Option |
|------------|---------------------------|---|-----------------------------|------------------------------|--------------------------|
| CP000009 | CPLN-120-PSNA-HN-S10-N350 | 350 bar (5000 psi) | 140-350 bar (2000-5000 psi) | 114 bar/turn (1700 psi/turn) | Adjustment with Screw |
| CP000060 | CPLN-120-PSNA-HN-S10-N200 | 200 bar (2900 psi) | 70-210 bar (1000-3000 psi) | 69 bar/turn (1000 psi/turn) | Adjustment with Screw |
| CP000059 | CPLN-120-PSNA-HN-S10-N100 | 100 bar (1400 psi) | 35-120 bar (500-1700 psi) | 37 bar/turn (550 psi/turn) | Adjustment with Screw |
| CP000064 | CPLN-120-PSNA-VN-S10-N350 | 350 bar (5000 psi) | 140-350 bar (2000-5000 psi) | 114 bar/turn (1700 psi/turn) | Adjustment with Handknob |
| CP000065 | CPLN-120-PSNA-VN-S10-N200 | 200 bar (2900 psi) | 70-210 bar (1000-3000 psi) | 69 bar/turn (1000 psi/turn) | Adjustment with Handknob |
| CP000066 | CPLN-120-PSNA-VN-S10-N100 | 100 bar (1400 psi) | 35-120 bar (500-1700 psi) | 37 bar/turn (550 psi/turn) | Adjustment with Handknob |

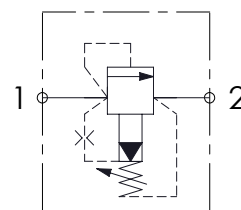
Revision B1

RELIEF VALVE IN BODY

KPLN-120-PSNA

PILOT OPERATED
SPOOL TYPE

Dimensions: mm [inches]



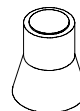
SPECIFICATIONS

| | |
|----------------------------------|---|
| Max. operating pressure: | 350 bar (5000 psi) |
| Rated flow: | 120 l/min (32 gpm) |
| Manifold: | Aluminium |
| Weight: | 0,49 kg (1,08 lbs) |
| Contamination class to ISO 4406: | See technical spec. |
| MTTFd: | 150 - 1200 years: See technical spec. |
| Leakage: | 200 cm ³ /min @200 bar 12,2 in ³ /min @ 2800 psi |

NOTES

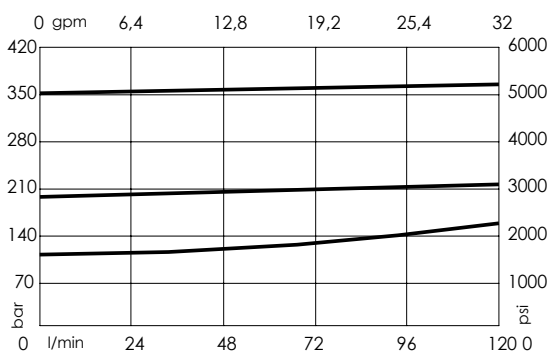
For other configurations/quick codes not available in this catalogue page please consult factory

SEALING CAP



Ordering code:
AT000022

CURVES



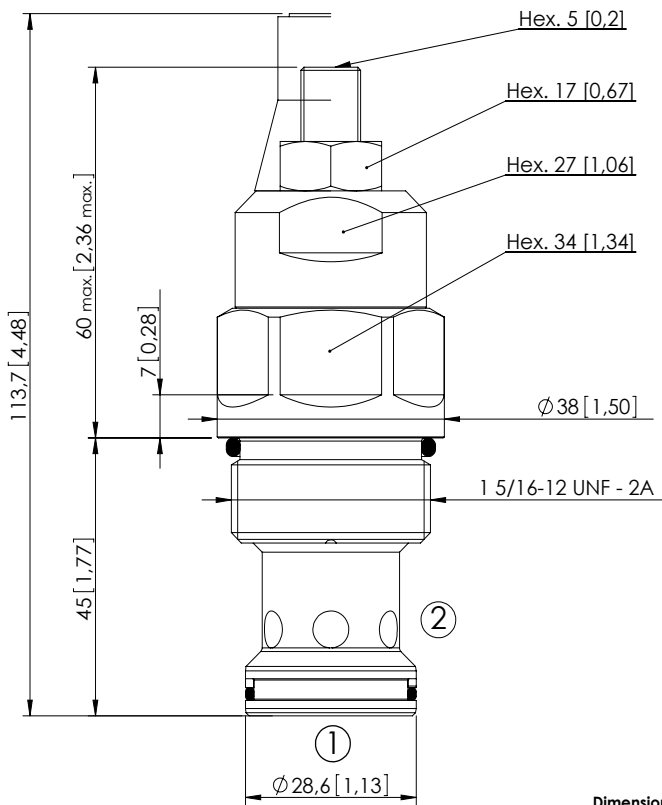
ORDERING CODES

| Quick code | Description | Main ports size | Standard setting Q=5 l/min (1,3 gpm) | Adjustment range | Pressure increase |
|------------|---------------------------|-----------------|---|-----------------------------|------------------------------|
| KP000014 | KPLN-120-PSNA-HN-G12-N350 | P,T : G1/2" | 350 bar (5000 psi) | 140-350 bar (2000-5000 psi) | 114 bar/turn (1600 psi/turn) |
| KP000048 | KPLN-120-PSNA-HN-G12-N200 | P,T : G1/2" | 200 bar (2900 psi) | 70-210 bar (1000-3000 psi) | 69 bar/turn (950 psi/turn) |
| KP000047 | KPLN-120-PSNA-HN-G12-N100 | P,T : G1/2" | 100 bar (1400 psi) | 35-120 bar (500-1700 psi) | 37 bar/turn (500 psi/turn) |
| KP000096 | KPLN-120-PSNA-HN-G34-N350 | P,T : G3/4" | 350 bar (5000 psi) | 140-350 bar (2000-5000 psi) | 114 bar/turn (1600 psi/turn) |
| KP000159 | KPLN-120-PSNA-HN-G34-N200 | P,T : G3/4" | 200 bar (2900 psi) | 70-210 bar (1000-3000 psi) | 69 bar/turn (950 psi/turn) |
| KP000160 | KPLN-120-PSNA-HN-G34-N100 | P,T : G3/4" | 100 bar (1400 psi) | 35-120 bar (500-1700 psi) | 37 bar/turn (500 psi/turn) |

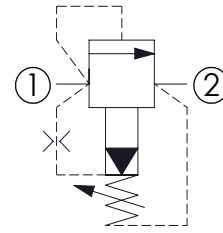
Revision A1

RELIEF VALVE

CPLN-300-PSNA

PILOT OPERATED
SPOOL TYPE

Dimensions: mm [inches]



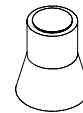
SPECIFICATIONS

| | |
|----------------------------------|--|
| Max. operating pressure: | 350 bar (5000 psi) |
| Rated flow: | 300 l/min (79 gpm) |
| Cavity: | SAE-16-2N |
| Weight: | 0,5 kg (1,1 lbs) |
| Contamination class to ISO 4406: | See technical spec. |
| Seal kit: | RA700084 |
| Installation torque: | 150 - 180 Nm (110 - 133 ft-lb) |
| MTTF _d : | 150 - 1200 years: See technical spec. |
| Leakage: | 350 cm ³ /min @200 bar 21,4 in ³ /min @2800 psi |

NOTES

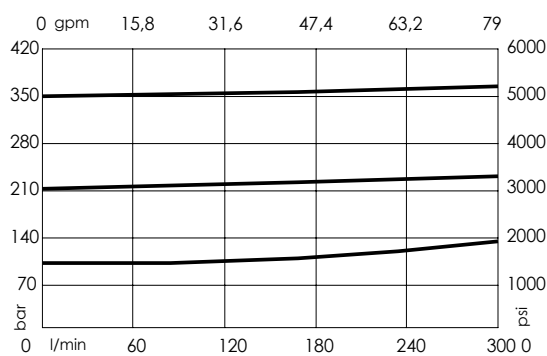
For other configurations/quick codes not available in this catalogue page please consult factory

SEALING CAP



Ordering code:
AT000022

CURVES



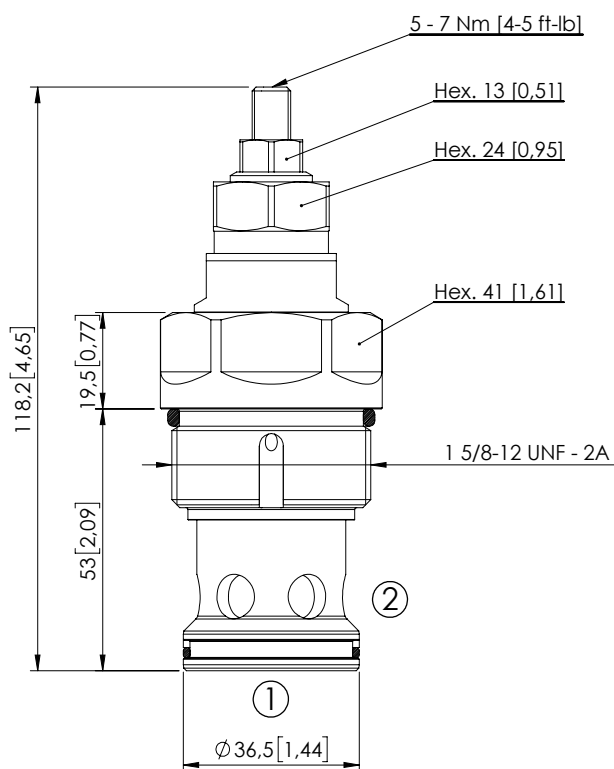
ORDERING CODES

| Quick code | Description | Standard setting (cracking pressure) | Adjustment range | Pressure increase |
|------------|---------------------------|--------------------------------------|-----------------------------|------------------------------|
| CP000188 | CPLN-300-PSNA-HN-S16-N350 | 350 bar (5000 psi) | 140-350 bar (2000-5000 psi) | 114 bar/turn (1600 psi/turn) |
| CP000177 | CPLN-300-PSNA-HN-S16-N200 | 200 bar (2900 psi) | 70-210 bar (1000-3000 psi) | 69 bar/turn (950 psi/turn) |
| CP000178 | CPLN-300-PSNA-HN-S16-N100 | 100 bar (1400 psi) | 35-120 bar (500-1700 psi) | 37 bar/turn (500 psi/turn) |
| | | | | |
| | | | | |
| | | | | |

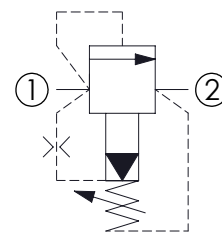
Revision B1

RELIEF VALVE

CPLN-500-PHNA

PILOTED OPERATED
SPOOL TYPE

Dimensions: mm [inches]



SPECIFICATIONS

| | |
|----------------------------------|---|
| Max. operating pressure: | 350 bar (5000 psi) |
| Rated flow: | 500 l/min (132 gpm) |
| Cavity: | SAE-20-2N |
| Weight: | 0,7 kg (1,54 lbs) |
| Contamination class to ISO 4406: | See technical spec. |
| Seal kit: | RA900085 |
| Installation torque: | 230 - 250 Nm (170 - 184 ft-lb) |
| MTF _a : | 150 - 1200 years: See technical spec. |
| Max. int. leakage: | 400 cm ³ /min (@46 cSt) 24,4 in ³ /min (@46 cSt) |

NOTES

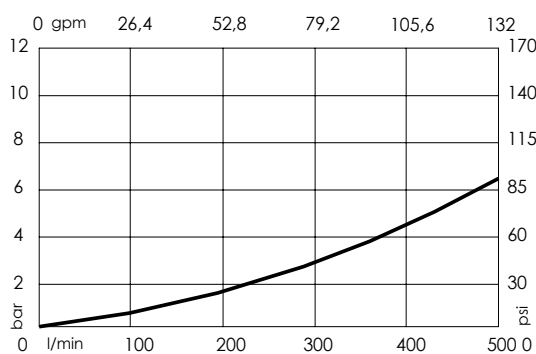
For other configurations/quick codes not available in this catalogue page please consult factory

SEALING CAP



Ordering code:
AT000020

CURVES



ORDERING CODES

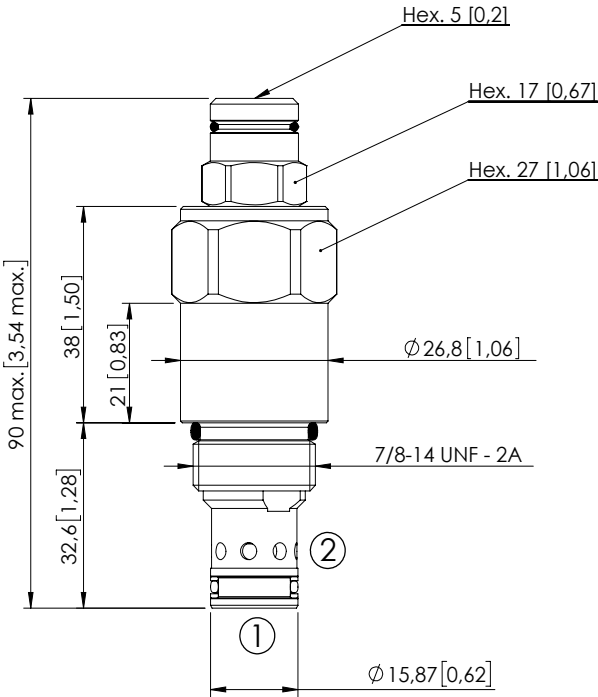
| Quick code | Description | Standard setting (cracking pressure) | Adjustment range | Pressure increase |
|------------|---------------------------|--------------------------------------|-----------------------------|------------------------------|
| CP000407 | CPLN-500-PHNA-SN-S20-N350 | 350 bar (5000 psi) | 140-350 bar (2000-5000 psi) | 142 bar/turn (2000 psi/turn) |
| CP000408 | CPLN-500-PHNA-SN-S20-N200 | 200 bar (2900 psi) | 90-210 bar (1300-3000 psi) | 87 bar/turn (1200 psi/turn) |
| CP000409 | CPLN-500-PHNA-SN-S20-N100 | 100 bar (1400 psi) | 35-110 bar (500-1600 psi) | 47 bar/turn (650 psi/turn) |
| | | | | |
| | | | | |
| | | | | |

Revision B1

RELIEF VALVE

CPLT-120-PSNA

PILOT OPERATED
SPOOL TYPE
COMPENSATED

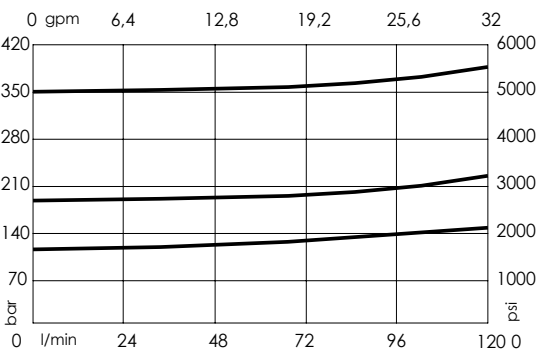


Dimensions: mm [inches]

NOTES

For other configurations/quick codes not available in this catalogue page please consult factory

CURVES



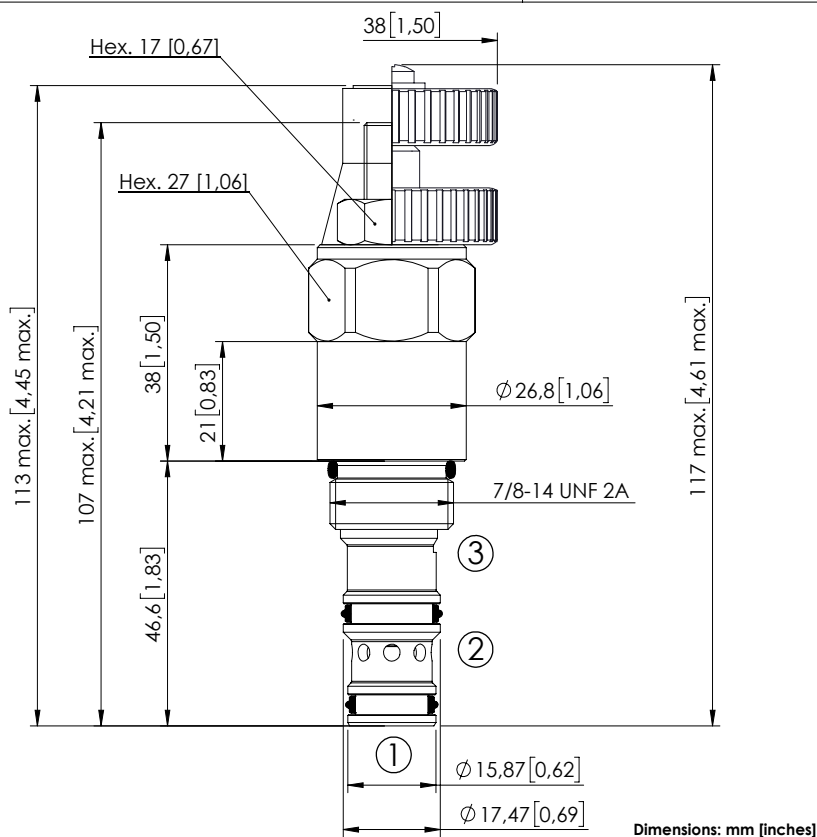
ORDERING CODES

| Quick code | Description | Standard setting (cracking pressure) | Adjustment range | Pressure increase |
|------------|---------------------------|---|--------------------------------|------------------------------|
| CP000070 | CPLT-120-PSNA-HN-S10-N350 | 350 bar (5000 psi) | 140-350 bar (2000-5000 psi) | 114 bar/turn (1600 psi/turn) |
| CP000071 | CPLT-120-PSNA-HN-S10-N200 | 200 bar (2900 psi) | 70-210 bar (1000-3000 psi) | 69 bar/turn (950 psi/turn) |
| CP000072 | CPLT-120-PSNA-HN-S10-N100 | 100 bar (1400 psi) | 35-120 bar (500-1700 psi) | 37 bar/turn (500 psi/turn) |
| | | | | |
| | | | | |
| | | | | |

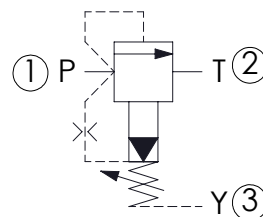
Revision C1

RELIEF VALVE

CPLV-120-PSNA

PILOT OPERATED
SPOOL TYPE
SEPARATE TANK LINE

Dimensions: mm [inches]



SPECIFICATIONS

| | |
|----------------------------------|--|
| Max. operating pressure: | 350 bar (5000 psi) |
| Rated flow: | 120 l/min (32 gpm) |
| Cavity: | SAE-10-3N |
| Weight: | 0,26 kg (0,57 lbs) |
| Contamination class to ISO 4406: | See technical spec. |
| Seal kit: | RB700092 |
| Installation torque: | 55 - 62 Nm (41 - 46 ft-lb) |
| MTF _d : | 150 - 1200 years: See technical spec. |
| Leakage (1>2): | 200 cm ³ /min @ 200 bar 12,2 in ³ /min @ 2800 psi |

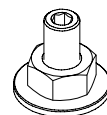
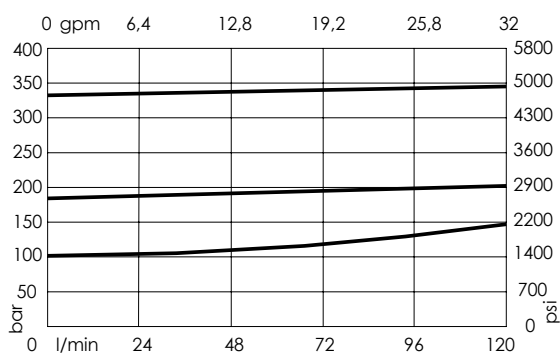
NOTES

For other configurations/quick codes not available in this catalogue page please consult factory

CURVES

OPTIONS

SEALING CAP

Adjustment
with
ScrewAdjustment
with
HandknobOrdering code:
AT000022

ORDERING CODES

| Quick code | Description | Standard setting Q=5 l/min (1,3 gpm) | Adjustment range | Pressure increase | Option |
|------------|---------------------------|---|-----------------------------|------------------------------|--------------------------|
| CP000228 | CPLV-120-PSNA-HN-S10-N350 | 350 bar (5000 psi) | 140-350 bar (2000-5000 psi) | 114 bar/turn (1700 psi/turn) | Adjustment with Screw |
| CP000427 | CPLV-120-PSNA-HN-S10-N200 | 200 bar (2900 psi) | 70-210 bar (1000-3000 psi) | 69 bar/turn (1000 psi/turn) | Adjustment with Screw |
| CP000428 | CPLV-120-PSNA-HN-S10-N100 | 100 bar (1400 psi) | 35-120 bar (500-1700 psi) | 37 bar/turn (550 psi/turn) | Adjustment with Screw |
| CP000429 | CPLV-120-PSNA-VN-S10-N350 | 350 bar (5000 psi) | 140-350 bar (2000-5000 psi) | 114 bar/turn (1700 psi/turn) | Adjustment with Handknob |
| CP000430 | CPLV-120-PSNA-VN-S10-N200 | 200 bar (2900 psi) | 70-210 bar (1000-3000 psi) | 69 bar/turn (1000 psi/turn) | Adjustment with Handknob |
| CP000431 | CPLV-120-PSNA-VN-S10-N100 | 100 bar (1400 psi) | 35-120 bar (500-1700 psi) | 37 bar/turn (550 psi/turn) | Adjustment with Handknob |

Revision A1