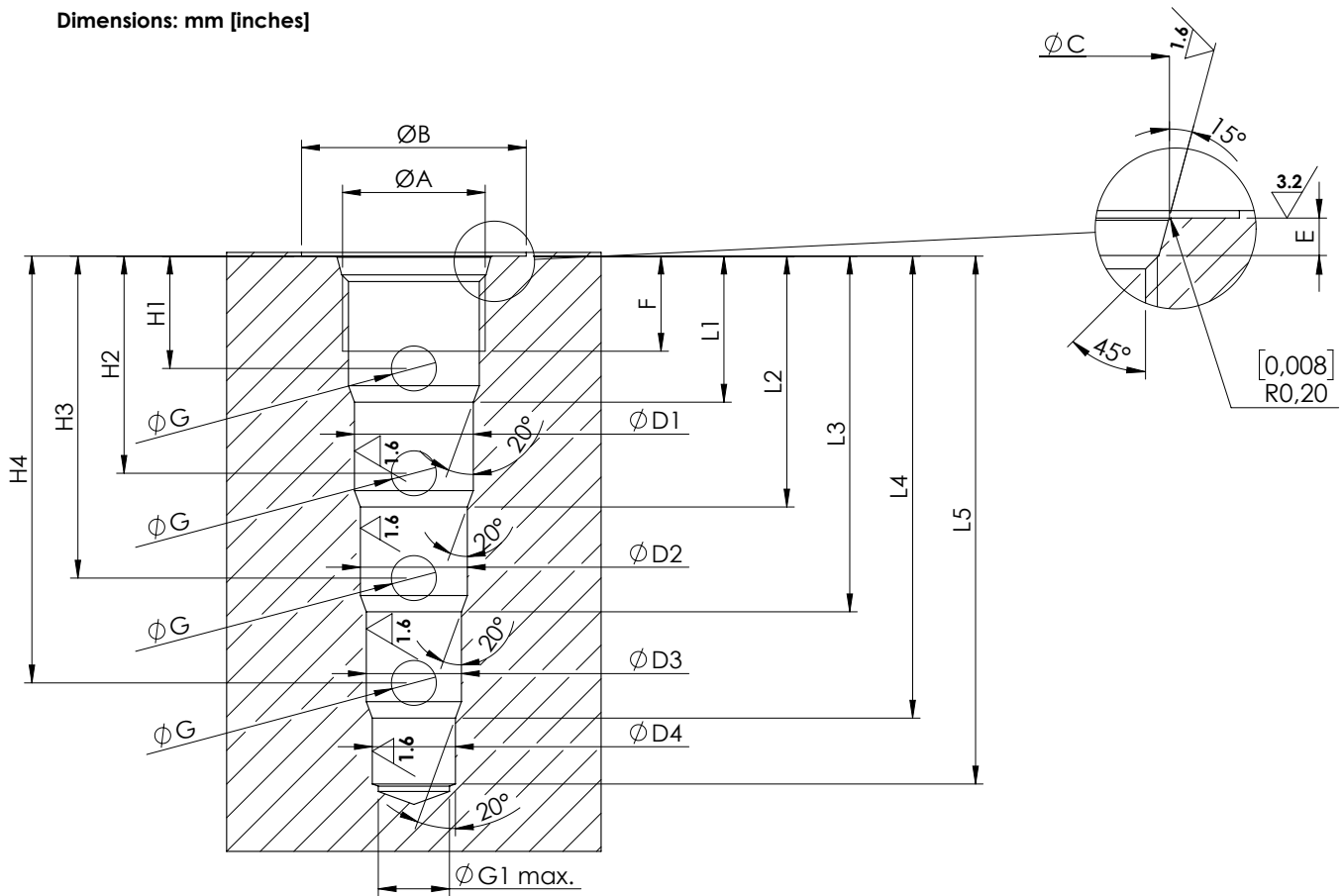


Dimensions: mm [inches]



General tolerances : 0.3 mm [0,012 inches]

⊙	0.03[0,0012]
⊥	0.02[0,0008]

	SAE-08-5N	SAE-10-5N	SAE-12-5N	SAE-16-5N
A	3/4-16 UNF	7/8-14 UNF	1-1/16 12 UN	1-5/16 12 UN
B	30 [1,181]	30 [1,181]	35 [1,378]	42 [1,653]
C	20.6 ^{+0,1} ₀ [0,811 ^{+0,004} ₀]	23.9 ^{+0,1} ₀ [0,941 ^{+0,004} ₀]	29.2 ^{+0,1} ₀ [1,15 ^{+0,004} ₀]	35.5 ^{+0,1} ₀ [1,398 ^{+0,004} ₀]
D1	15.87 ^{+0,05} ₀ [0,625 ^{+0,002} ₀]	19.05 ^{+0,05} ₀ [0,750 ^{+0,002} ₀]	23.80 ^{+0,05} ₀ [0,937 ^{+0,002} ₀]	28.60 ^{+0,05} ₀ [1,126 ^{+0,002} ₀]
D2	14.27 ^{+0,05} ₀ [0,562 ^{+0,002} ₀]	17.47 ^{+0,05} ₀ [0,688 ^{+0,002} ₀]	22.22 ^{+0,05} ₀ [0,875 ^{+0,002} ₀]	27.00 ^{+0,05} ₀ [1,063 ^{+0,002} ₀]
D3	12.70 ^{+0,05} ₀ [0,500 ^{+0,002} ₀]	15.87 ^{+0,05} ₀ [0,625 ^{+0,002} ₀]	20.62 ^{+0,05} ₀ [0,812 ^{+0,002} ₀]	25.42 ^{+0,05} ₀ [1 ^{+0,002} ₀]
D4	11.10 ^{+0,05} ₀ [0,437 ^{+0,002} ₀]	14.27 ^{+0,05} ₀ [0,562 ^{+0,002} ₀]	19.05 ^{+0,05} ₀ [0,750 ^{+0,002} ₀]	23.80 ^{+0,05} ₀ [0,937 ^{+0,002} ₀]
E	2.6 ^{+0,3} ₀ [0,102 ^{+0,012} ₀]	2.6 ^{+0,3} ₀ [0,102 ^{+0,012} ₀]	3.3 ^{+0,3} ₀ [0,130 ^{+0,012} ₀]	3.3 ^{+0,3} ₀ [0,130 ^{+0,012} ₀]
F	13 [0,512]	15 [0,591]	19 [0,748]	20 [0,787]
G	6 [0,236]	7 [0,276]	14 [0,551]	16 [0,630]
G1	10.5[0,413]	13.5 [0,531]	18 [0,708]	23 [0,905]
H1	14,7 [0,44]	18 [0,709]	27.5 [1,082]	24 [0,945]
H2	29 [1,142]	34 [1,339]	52.2 [2,055]	53.5 [2,106]
H3	43 [1,693]	50 [1,969]	78 [3,071]	82.5 [3,250]
H4	57 [2,244]	66 [2,598]	104 [4,094]	110.5 [4,350]
L1	19.50 [0,768]	23.6 [0,929]	36.5 [1,437]	35.5 [1,397]
L2	33.50 [1,319]	40.2 [1,583]	61.50 [2,421]	64 [2,520]
L3	47.5 [1,870]	56.1 [2,209]	87.5 [3,445]	92.5 [3,642]
L4	61.7 [2,429]	72 [2,835]	113.5 [4,468]	121 [4,763]
L5	70.5 [2,776]	79.4 [3,126]	125.2 [4,930]	132.8 [5,228]