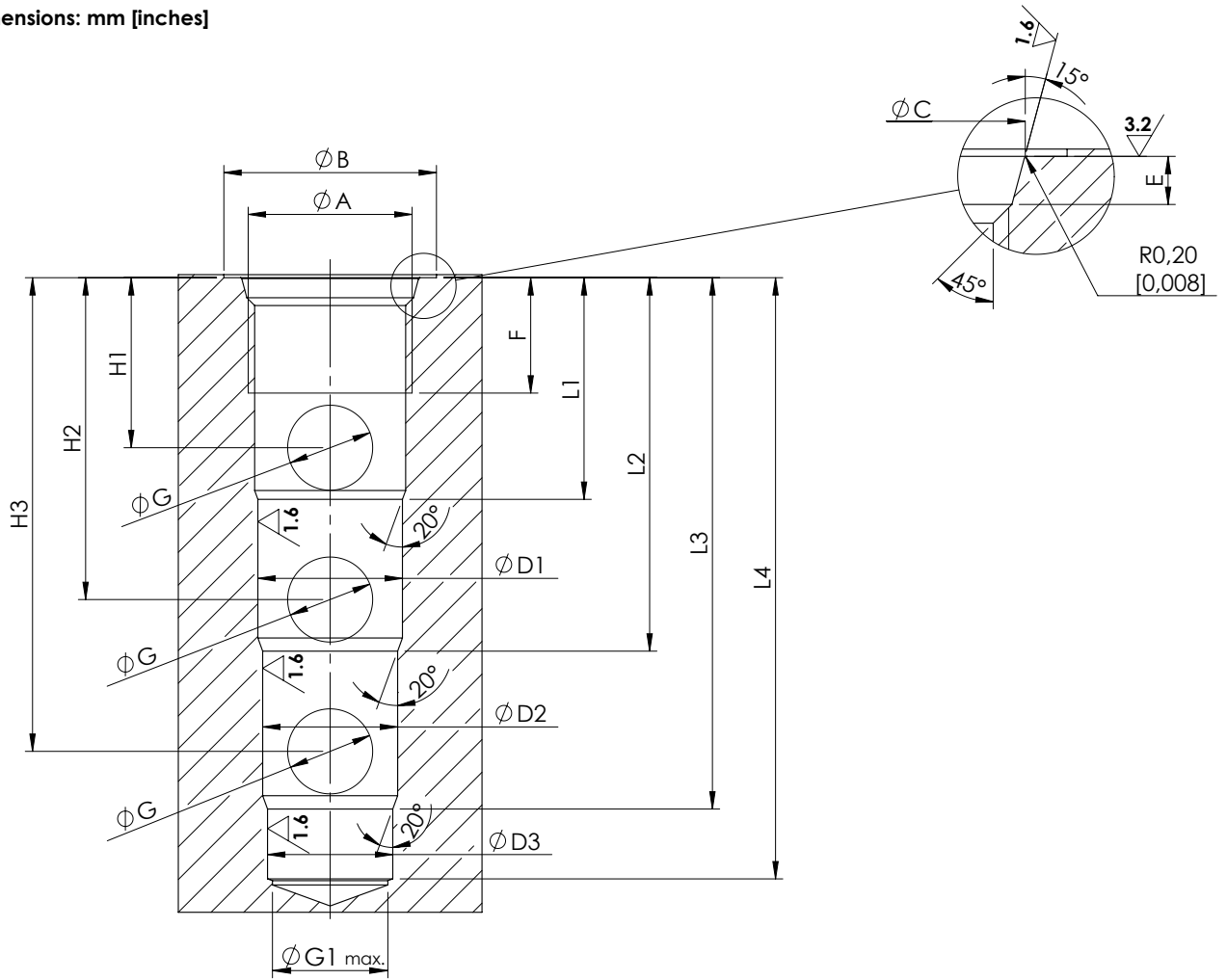


Dimensions: mm [inches]



General tolerances : 0.3 mm [0,012 inches]

⊙	0.03[0,0012]
⊥	0.02[0,0008]

	SAE-08-4N	SAE-10-4N	SAE-12-4N	SAE-16-4N	SAE-20-4N
A	3/4-16 UNF	7/8-14 UNF	1-1/16 12 UNF	1-5/16 12 UNF	1-5/8 12 UNF
B	26 [1,02]	30 [1,18]	35 [1,38]	42 [1,65]	48 [1,89]
C	20.6 ^{+0,1} ₀ [0,811 ^{+0,004} ₀]	23.9 ^{+0,1} ₀ [0,941 ^{+0,004} ₀]	29.2 ^{+0,1} ₀ [1,15 ^{+0,004} ₀]	35.5 ^{+0,1} ₀ [1,398 ^{+0,004} ₀]	43.5 ^{+0,1} ₀ [1,713 ^{+0,004} ₀]
D1	15.87 ^{+0,05} ₀ [0,625 ^{+0,002} ₀]	19.05 ^{+0,05} ₀ [0,750 ^{+0,002} ₀]	23.80 ^{+0,05} ₀ [0,937 ^{+0,002} ₀]	28.60 ^{+0,05} ₀ [1,126 ^{+0,002} ₀]	36.52 ^{+0,05} ₀ [1,438 ^{+0,002} ₀]
D2	14.27 ^{+0,05} ₀ [0,562 ^{+0,002} ₀]	17.47 ^{+0,05} ₀ [0,688 ^{+0,002} ₀]	22.22 ^{+0,05} ₀ [0,875 ^{+0,002} ₀]	27.00 ^{+0,05} ₀ [1,063 ^{+0,002} ₀]	33.35 ^{+0,05} ₀ [1,313 ^{+0,002} ₀]
D3	12.7 ^{+0,05} ₀ [0,500 ^{+0,002} ₀]	15.87 ^{+0,05} ₀ [0,625 ^{+0,002} ₀]	20.62 ^{+0,05} ₀ [0,812 ^{+0,002} ₀]	25.42 ^{+0,05} ₀ [1 ^{+0,002} ₀]	31.75 ^{+0,05} ₀ [1,250 ^{+0,002} ₀]
E	2.6 ^{+0,3} ₀ [0,102 ^{+0,012} ₀]	2.6 ^{+0,3} ₀ [0,102 ^{+0,012} ₀]	3.3 ^{+0,3} ₀ [0,130 ^{+0,012} ₀]	3.3 ^{+0,3} ₀ [0,130 ^{+0,012} ₀]	3.4 ^{+0,3} ₀ [0,134 ^{+0,012} ₀]
F	13 [0,512]	15 [0,591]	19 [0,748]	20 [0,787]	22 [0,866]
G	6 [0,236]	8 [0,315]	14 [0,551]	16 [0,630]	25 [0,984]
G1	12 [0,472]	15 [0,591]	19 [0,748]	24 [0,945]	30 [1,181]
H1	15 [0,591]	18 [0,709]	28 [1,102]	25 [0,984]	32 [1,260]
H2	29 [1,142]	34 [1,339]	53 [2,087]	53.5 [2,106]	72 [2,835]
H3	43 [1,693]	50 [1,969]	78 [3,071]	82 [3,228]	114 [4,488]
L1	19.50 [0,768]	23.5 [0,925]	36.5 [1,437]	35.5 [1,398]	46 [1,811]
L2	33.50 [1,319]	39.50 [1,555]	61.50 [2,421]	64 [2,520]	87 [3,425]
L3	47.5 [1,870]	55.5 [2,185]	87.5 [3,445]	92.5 [3,642]	128.5 [5,059]
L4	56 [2,205]	64.5 [2,539]	99 [3,898]	104 [4,095]	142 [5,591]