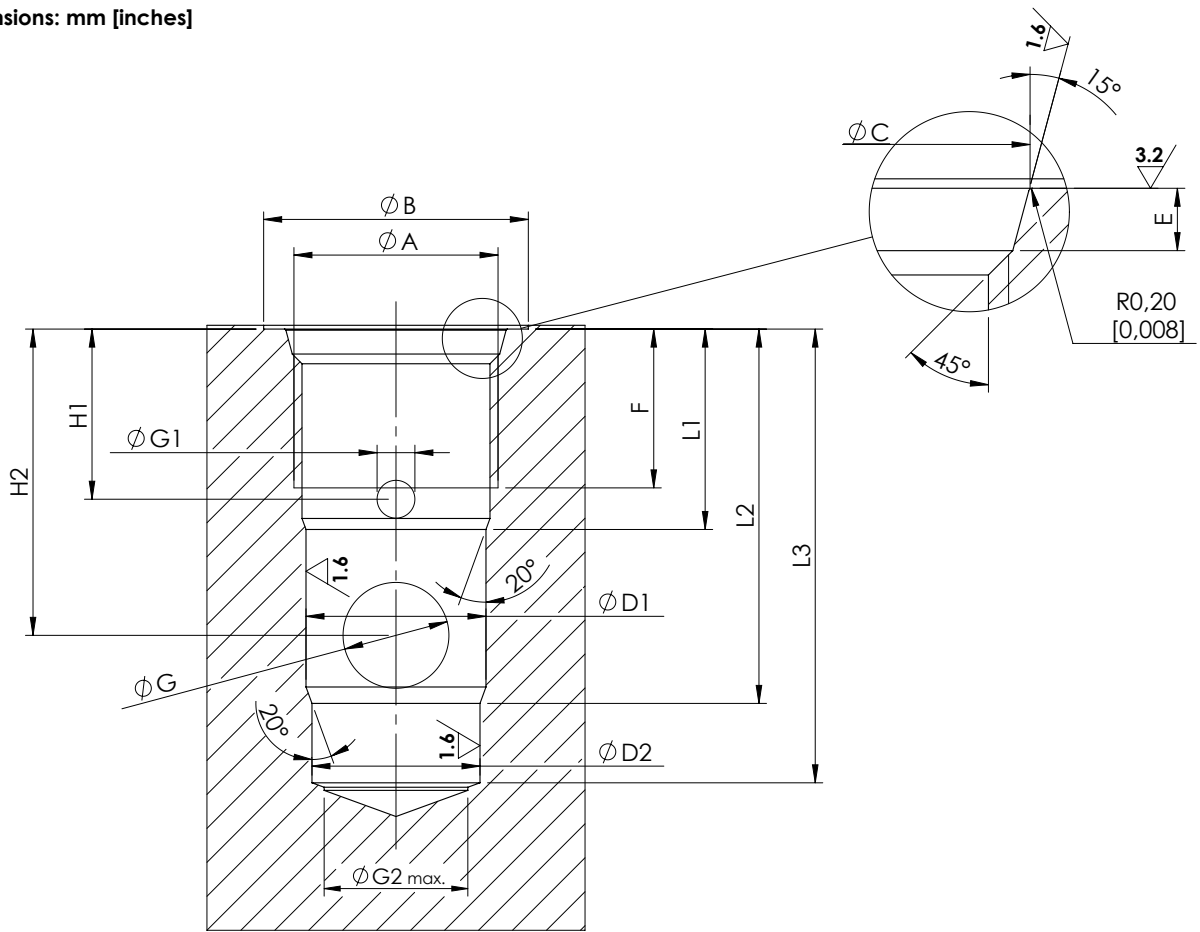


Dimensions: mm [inches]



General tolerances : 0.3 mm [0,012 inches] ◎ 0.03[0,0012]  
┌ 0.02[0,0008]

	SAE-08-3C	SAE-10-3C	SAE-12-3C	SAE-16-3C	SAE-20-3C
A	3/4-16 UNF	7/8-14 UNF	1-1/16 12 UNF	1-5/16 12 UNF	1-5/8 12 UNF
B	26 [1,024]	30 [1,18]	35 [1,38]	42 [1,65]	48 [1,89]
C	20.6 <sup>+0,1</sup> <sub>0</sub> [0,811 <sup>+0,004</sup> <sub>0</sub> ]	23.9 <sup>+0,1</sup> <sub>0</sub> [0,941 <sup>+0,004</sup> <sub>0</sub> ]	29.2 <sup>+0,1</sup> <sub>0</sub> [1,15 <sup>+0,004</sup> <sub>0</sub> ]	35.5 <sup>+0,1</sup> <sub>0</sub> [1,398 <sup>+0,004</sup> <sub>0</sub> ]	43.5 <sup>+0,1</sup> <sub>0</sub> [1,713 <sup>+0,004</sup> <sub>0</sub> ]
D1	15.87 <sup>+0,05</sup> <sub>0</sub> [0,625 <sup>+0,002</sup> <sub>0</sub> ]	19.05 <sup>+0,05</sup> <sub>0</sub> [0,750 <sup>+0,002</sup> <sub>0</sub> ]	23.80 <sup>+0,05</sup> <sub>0</sub> [0,937 <sup>+0,002</sup> <sub>0</sub> ]	28.60 <sup>+0,05</sup> <sub>0</sub> [1,126 <sup>+0,002</sup> <sub>0</sub> ]	36.52 <sup>+0,05</sup> <sub>0</sub> [1,438 <sup>+0,002</sup> <sub>0</sub> ]
D2	14.27 <sup>+0,05</sup> <sub>0</sub> [0,562 <sup>+0,002</sup> <sub>0</sub> ]	17.47 <sup>+0,05</sup> <sub>0</sub> [0,688 <sup>+0,002</sup> <sub>0</sub> ]	22.22 <sup>+0,05</sup> <sub>0</sub> [0,875 <sup>+0,002</sup> <sub>0</sub> ]	25.42 <sup>+0,05</sup> <sub>0</sub> [1 <sup>+0,002</sup> <sub>0</sub> ]	33.35 <sup>+0,05</sup> <sub>0</sub> [1,313 <sup>+0,002</sup> <sub>0</sub> ]
E	2.6 <sup>+0,3</sup> <sub>0</sub> [0,102 <sup>+0,012</sup> <sub>0</sub> ]	2.6 <sup>+0,3</sup> <sub>0</sub> [0,102 <sup>+0,012</sup> <sub>0</sub> ]	3.3 <sup>+0,3</sup> <sub>0</sub> [0,130 <sup>+0,012</sup> <sub>0</sub> ]	3.3 <sup>+0,3</sup> <sub>0</sub> [0,130 <sup>+0,012</sup> <sub>0</sub> ]	3.4 <sup>+0,3</sup> <sub>0</sub> [0,134 <sup>+0,012</sup> <sub>0</sub> ]
F	12 [0,472]	13 [0,512]	21 [0,827]	16.5 [0,650]	20 [0,787]
G	8 [0,315]	14 [0,551]	14 [0,551]	15 [0,591]	28 [1,102]
G1	3 [0,118]	4 [0,158]	5 [0,197]	5 [0,197]	7 [0,276]
G2	12 [0,475]	15 [0,591]	19 [0,748]	24 [0,945]	30 [1,181]
H1	12.5 [0,492]	14 [0,551]	22.5 [0,889]	17.5 [0,689]	20 [0,787]
H2	26.5 [0,807]	31.5 [1,240]	40.5 [1,595]	38 [1,496]	50 [1,969]
L1	16 [0,630]	18 [0,709]	26.5 [1,043]	22 [0,866]	25.5 [1,004]
L2	32 [1,260]	40 [1,575]	49.5 [1,949]	47.5 [1,870]	65.5 [2,579]
L3	40 [1,575]	49 [1,929]	60 [2,363]	58 [2,284]	78 [3,071]