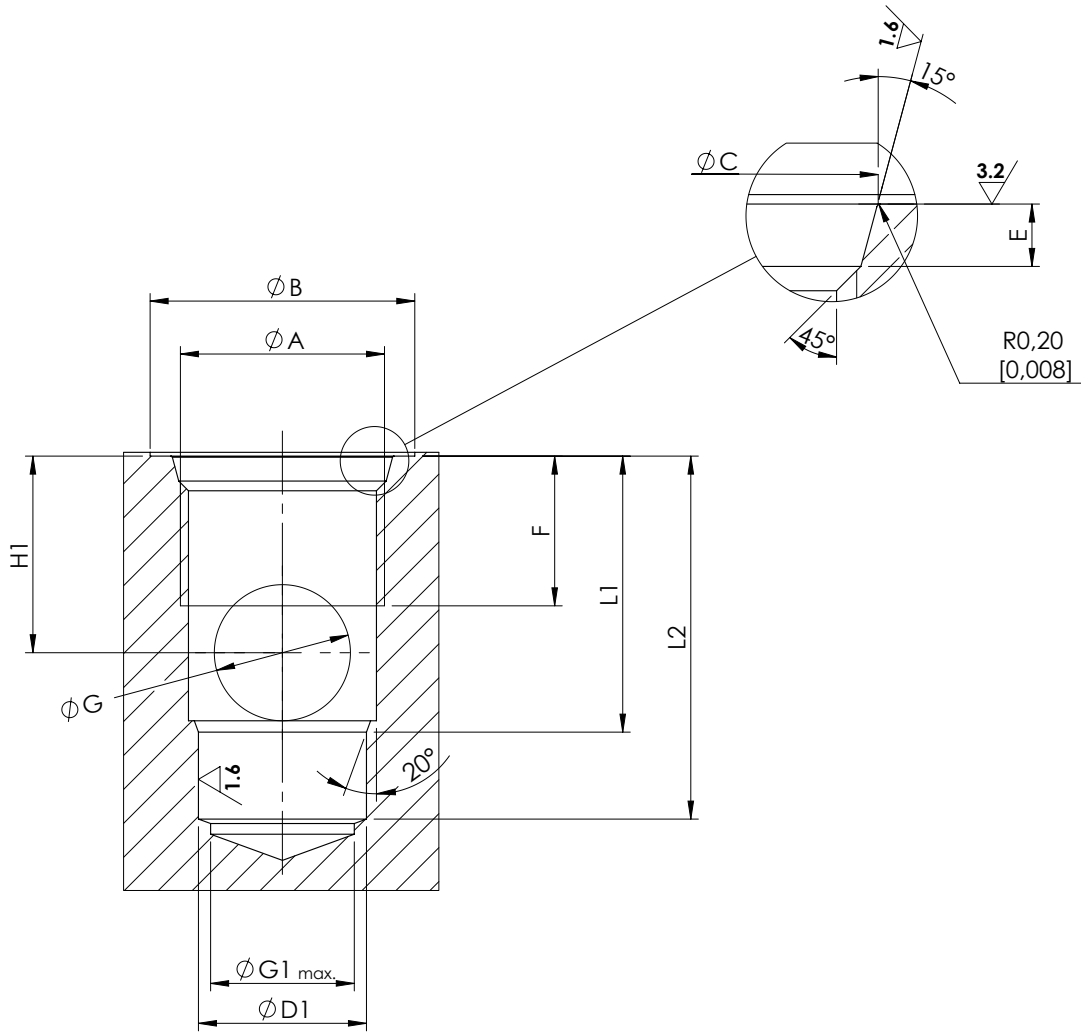


Dimensions: mm [inches]



General tolerances : 0.3 mm [0,012 inches]

Ⓢ	0.03[0,0012]
Ⓜ	0.02[0,0008]

	SAE-08-2N	SAE-10-2N	SAE-12-2N	SAE-16-2N	SAE-20-2N
A	3/4-16 UNF	7/8-14 UNF	1-1/16 12 UNF	1-5-16 12 UNF	1-5/8 12 UNF
B	26 [1,02]	30 [1,18]	35 [1,38]	42 [1,65]	48 [1,89]
C	20.6 $\begin{smallmatrix} +0,1 \\ 0 \end{smallmatrix}$ [0,811 $\begin{smallmatrix} +0,004 \\ 0 \end{smallmatrix}$]	23.9 $\begin{smallmatrix} +0,1 \\ 0 \end{smallmatrix}$ [0,941 $\begin{smallmatrix} +0,004 \\ 0 \end{smallmatrix}$]	29.2 $\begin{smallmatrix} +0,1 \\ 0 \end{smallmatrix}$ [1,15 $\begin{smallmatrix} +0,004 \\ 0 \end{smallmatrix}$]	35.5 $\begin{smallmatrix} +0,1 \\ 0 \end{smallmatrix}$ [1,398 $\begin{smallmatrix} +0,004 \\ 0 \end{smallmatrix}$]	43.5 $\begin{smallmatrix} +0,1 \\ 0 \end{smallmatrix}$ [1,713 $\begin{smallmatrix} +0,004 \\ 0 \end{smallmatrix}$]
D1	12.7 $\begin{smallmatrix} +0,05 \\ 0 \end{smallmatrix}$ [0,5 $\begin{smallmatrix} +0,002 \\ 0 \end{smallmatrix}$]	15.87 $\begin{smallmatrix} +0,05 \\ 0 \end{smallmatrix}$ [0,625 $\begin{smallmatrix} +0,002 \\ 0 \end{smallmatrix}$]	22.22 $\begin{smallmatrix} +0,05 \\ 0 \end{smallmatrix}$ [0,875 $\begin{smallmatrix} +0,002 \\ 0 \end{smallmatrix}$]	28.60 $\begin{smallmatrix} +0,05 \\ 0 \end{smallmatrix}$ [1,126 $\begin{smallmatrix} +0,002 \\ 0 \end{smallmatrix}$]	36.52 $\begin{smallmatrix} +0,05 \\ 0 \end{smallmatrix}$ [1,438 $\begin{smallmatrix} +0,002 \\ 0 \end{smallmatrix}$]
E	2.6 $\begin{smallmatrix} +0,3 \\ 0 \end{smallmatrix}$ [0,102 $\begin{smallmatrix} +0,012 \\ 0 \end{smallmatrix}$]	2.6 $\begin{smallmatrix} +0,3 \\ 0 \end{smallmatrix}$ [0,102 $\begin{smallmatrix} +0,012 \\ 0 \end{smallmatrix}$]	3.3 $\begin{smallmatrix} +0,3 \\ 0 \end{smallmatrix}$ [0,130 $\begin{smallmatrix} +0,012 \\ 0 \end{smallmatrix}$]	3.3 $\begin{smallmatrix} +0,3 \\ 0 \end{smallmatrix}$ [0,130 $\begin{smallmatrix} +0,012 \\ 0 \end{smallmatrix}$]	3.4 $\begin{smallmatrix} +0,3 \\ 0 \end{smallmatrix}$ [0,134 $\begin{smallmatrix} +0,012 \\ 0 \end{smallmatrix}$]
F	13 [0,512]	15 [0,591]	20 [0,787]	20 [0,787]	22 [0,866]
G	9 [0,354]	12 [0,472]	18 [0,709]	19 [0,748]	25 [0,984]
G1	12 [0,472]	15 [0,591]	19 [0,748]	24 [0,945]	30 [1,18]
H1	14 [0,551]	18 [0,709]	26 [1,024]	25 [0,984]	32 [1,260]
L1	20.5 [0,807]	25.5 [1,004]	36.5 [1,437]	36 [1,417]	44.5 [1,752]
L2	29 [1,142]	34.5 [1,358]	48 [1,890]	49 [1,929]	59 [2,323]