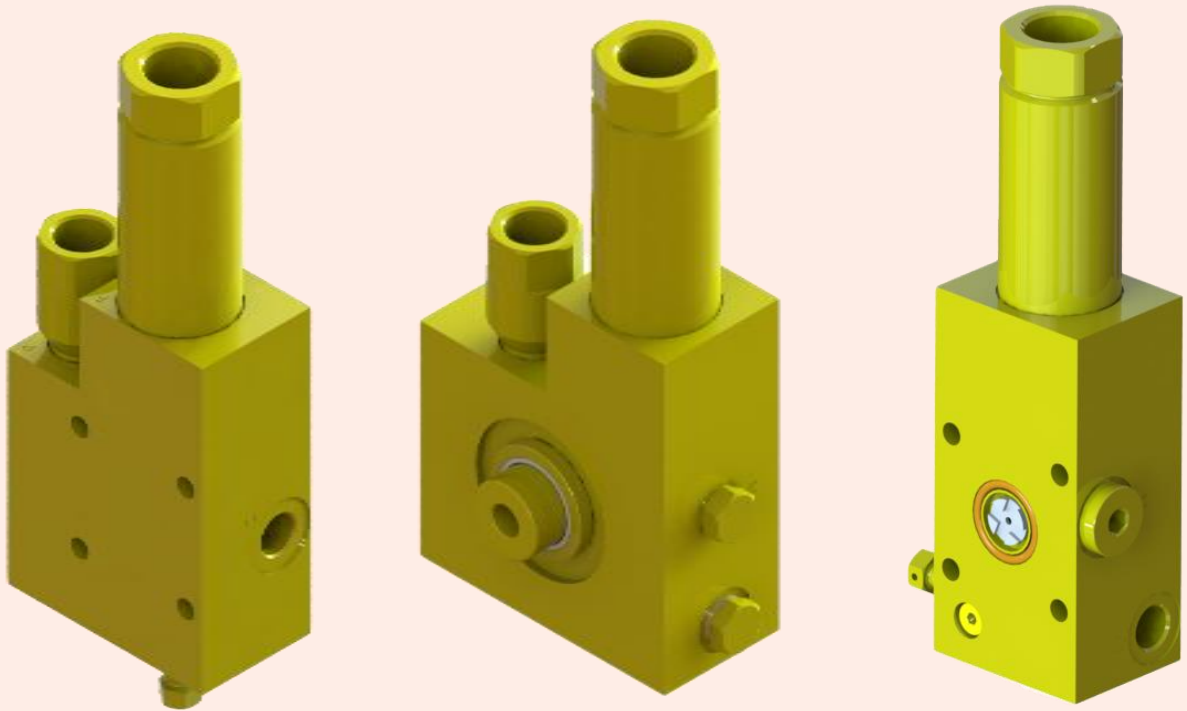
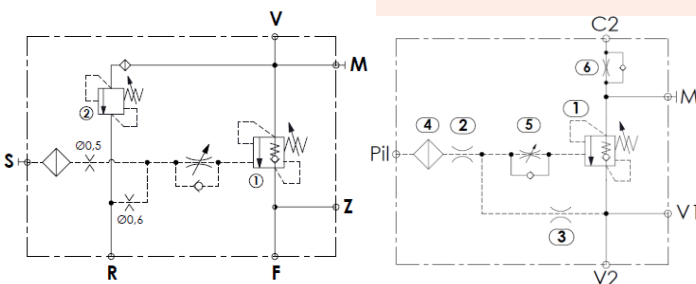


## OVERCENTRE VALVES



### TECHNICAL DATA:



<b>Maximum operating pressure:</b>	500 bar
<b>Rated flow:</b>	up 80 l/min
<b>Manifold material:</b>	Steel
<b>Surface treatment:</b>	Zinc plating
<b>Main ports:</b>	BSPP - JIS – SAE – Banjo
	mount
<b>Operating temperature:</b>	-20/+200°C (Viton seals)

### DESCRIPTION:

A new range of overcentre valves for concrete pump cranes is now available, allowing better control of machine movements, longer lifecycle and interchangeability with market standards, for easy application to existing machines and after sales service.

We offer standard BSPP, JIS, SAE threaded port connections and banjo mounting, as well as tailored solutions made on your special dimensional needs.

#### Main features:

- Minimal hysteresis, allowing lower pressure peaks and longer machine life
- Robust design, allowing reduced sensitivity to contamination
- Perfect movement control, with a wide range of available metering pistons
- Interchangeability with main market standards, allowing easy application to existing machines and after sales service.