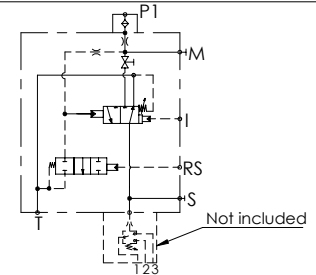
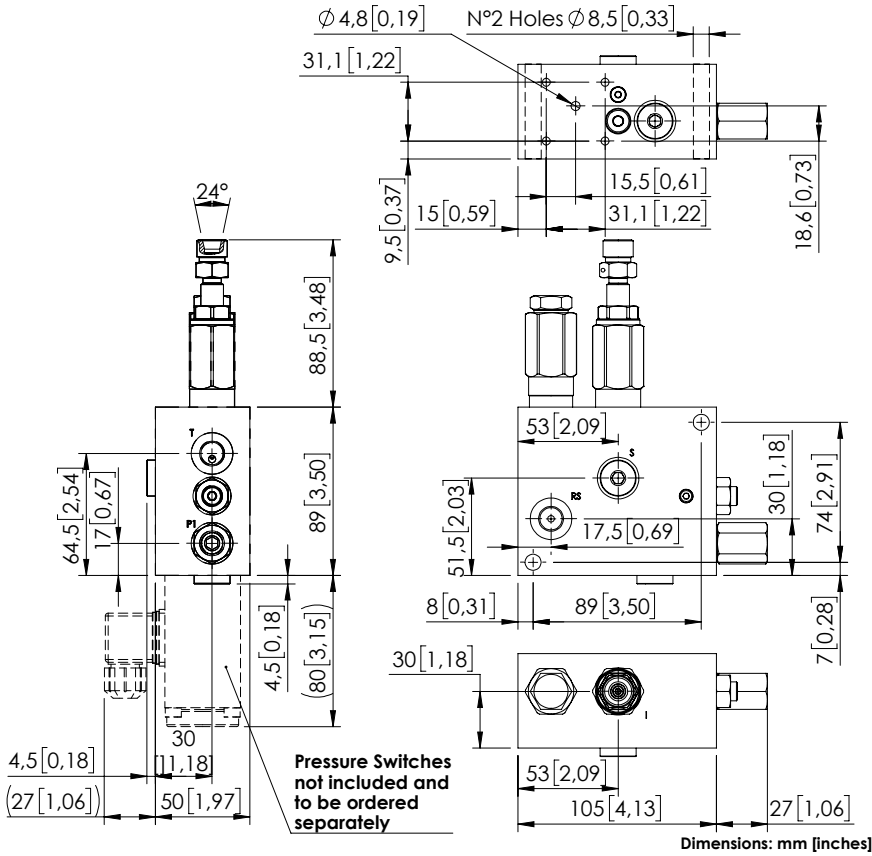


MTTR-005-TLSN

PILOT PRESSURE
UNLOADING
FLANGE FOR PRESSURE SWITCH



SPECIFICATIONS

Max. operating pressure:	350 bar (5000 psi)
Rated flow:	5 l/min (1,3 gpm)
Weight:	1,78 kg (3,9 lbs)
Manifold:	Aluminium
Contamination class to ISO 4406:	See technical spec.
MTTFd:	150 - 1200 years: See technical spec.

NOTES

For info or special version contact AFT sales network.
For other configurations/quick codes not available in this catalogue page please consult factory

CURVES

ORDERING CODES

Quick code	Description	Ports	Standard setting Q=5 l/min (1,3 gpm)	Setting range	Pressure increase
MT000031	MTTR-005-TLSN-NP-G14-N350	P1,M,PR1,RS,T,S: G 1/4" I: M16x1,5	280 bar (4000 psi)	100-350 bar (1500-5000 psi)	109 bar/turn (1600 psi/turn)