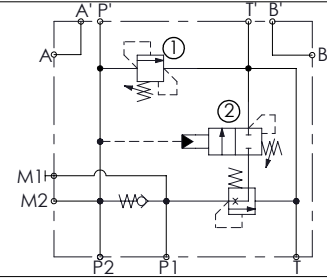
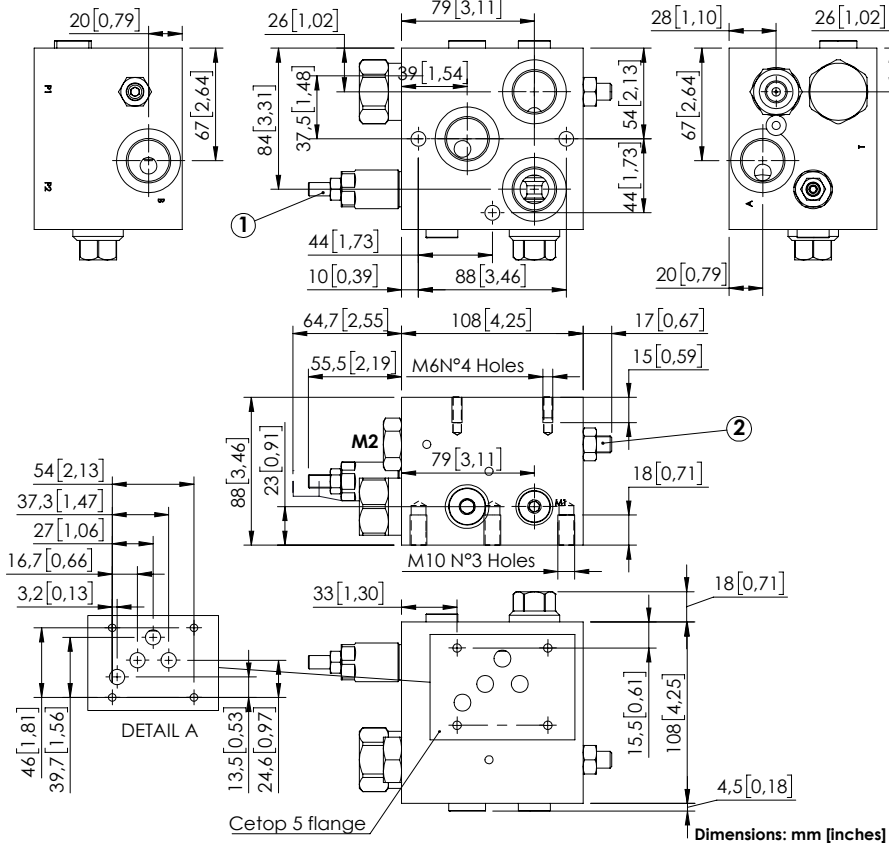


UNLOADING VALVE

MTSB-150-SDSN

CETOP 5



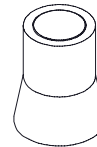
SPECIFICATIONS

Max. operating pressure:	350 bar (5000 psi)
Rated flow:	150 l/min (40 gpm)
Weight:	7,26 kg (16 lbs)
Contamination class to ISO 4406:	See technical spec.
MTF _d :	150 - 1200 years: See technical spec.

NOTES

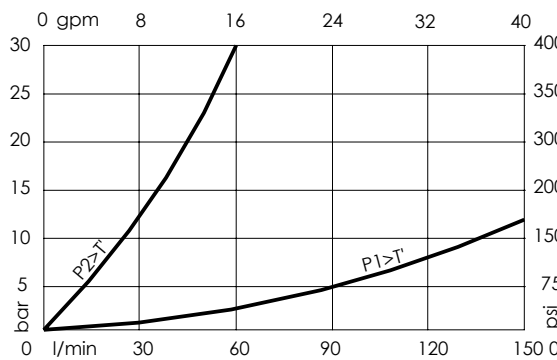
- P2 > P' → 50 l/min (13 gpm)
- P1 > P' → 100 l/min (26 gpm)
- Max flow valve 1: 30 l/min (8 gpm)
- For other configurations/quick codes not available in this catalogue page please consult factory

SEALING CAP



Ordering code:
AT000020

CURVES



ORDERING CODES

Quick code	Description	Ports	Standard setting Q=5 l/min (1,3 gpm)	Setting range	Pressure increase bar/turn (psi/turn)
MT000029	MTSB-150-SDSN-NP-G34-N350	A,B,P1,P2,T: G3/4" A',B',P',T': Cetop 5 M1,M2: G1/4"	① 200 bar (2900 psi) ② 50 bar (700 psi)	① 50-210 bar (700-2900 psi) ② 20-100 bar (300-1500 psi)	① 42 (600) ② 23 (350)