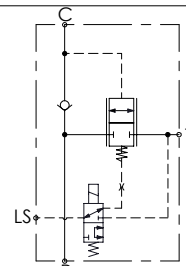
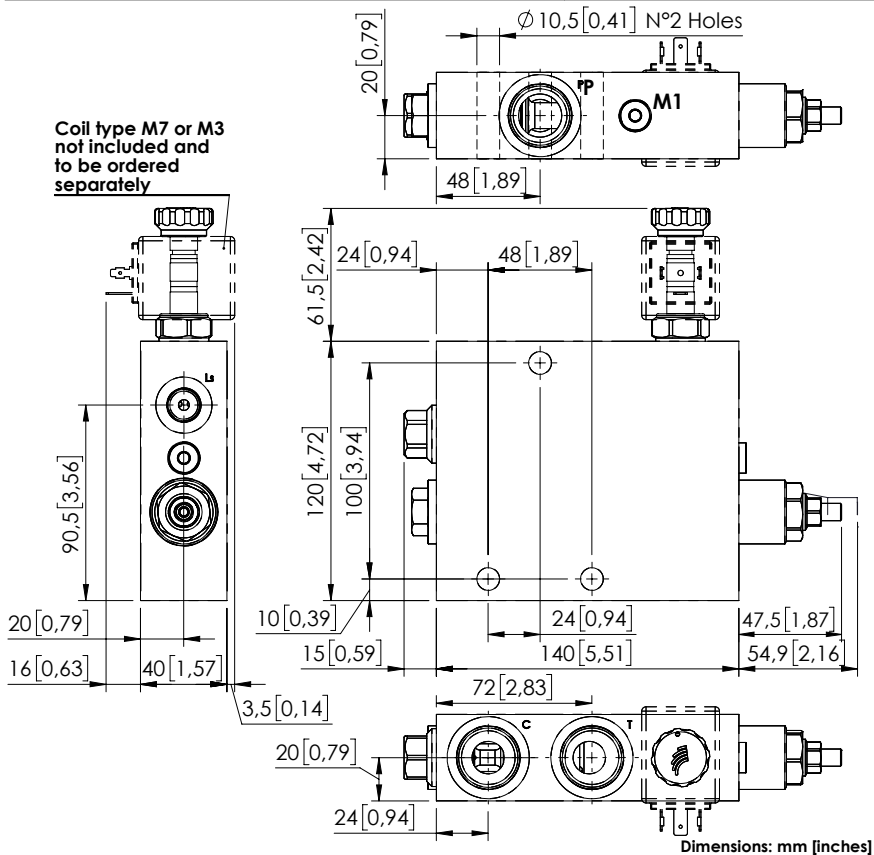


UNLOADING VALVE

MTTE-150-SLSN

PUMP UNLOADING
PILOTED



SPECIFICATIONS

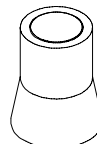
Max. operating pressure:	350 bar (5000 psi)
Rated flow:	150 l/min (40 gpm)
Manifold:	Steel
Weight:	4,68 kg (10,3 lbs)
Coil type:	M7 or M3 type
Contamination class to ISO 4406:	See technical spec.
MTTFd:	150 - 1200 years: See technical spec.

NOTES

See chapter 21.00.000 for coil.

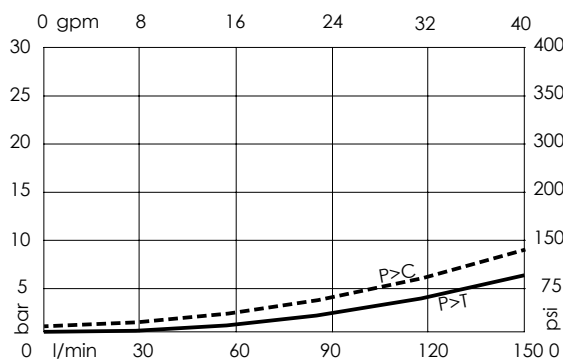
For other configurations/quick codes not available in this catalogue page please consult factory

SEALING CAP



Ordering code:
AT000020

CURVES



ORDERING CODES

Quick code	Description	Ports	
MT000028	MTTE-150-SLSN-NP-U11-N350	P,C,T: 1 1/16" UNF - 2B LS: 9/16" UNF - 2B	