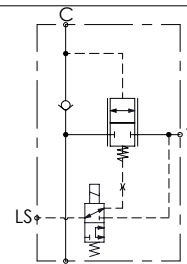
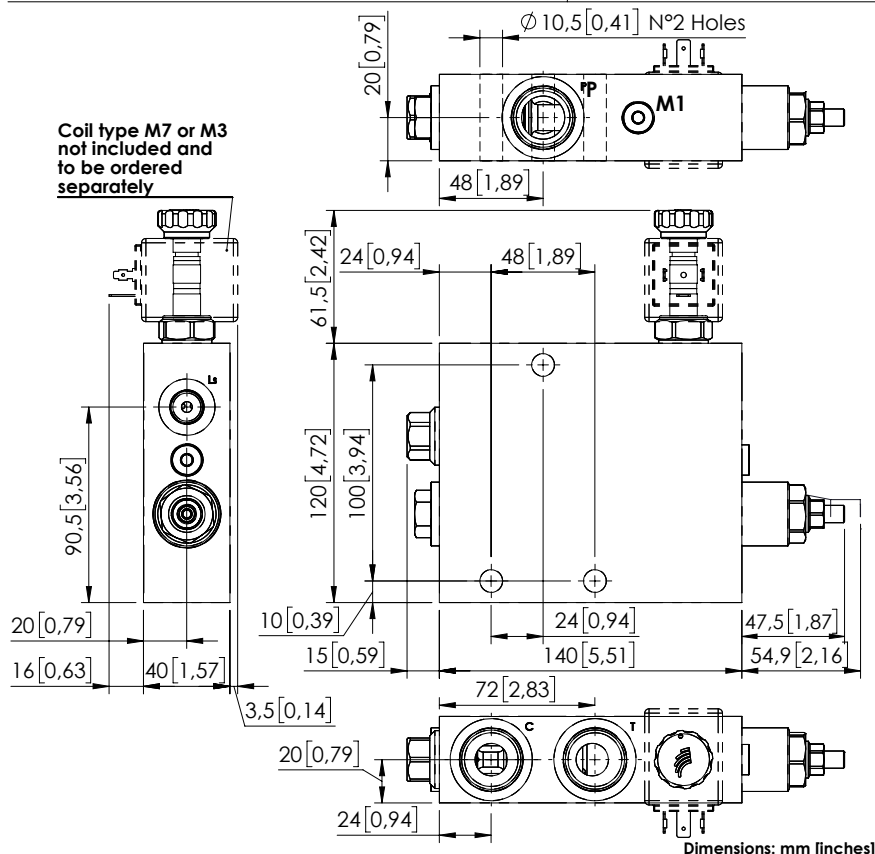


## UNLOADING VALVE

# MTTE-150-SLSN

PUMP UNLOADING  
PILOTED



## SPECIFICATIONS

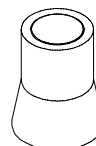
|                                  |                     |
|----------------------------------|---------------------|
| Max. operating pressure:         | 350 bar (5000 psi)  |
| Rated flow:                      | 150 l/min (40 gpm)  |
| Manifold:                        | Steel               |
| Weight:                          | 4,68 kg (10,3 lbs)  |
| Coil type:                       | M7 or M3 type       |
| Contamination class to ISO 4406: | See technical spec. |
| MTTFd:                           | 150 years           |

## NOTES

See chapter 21.00.000 for coil.

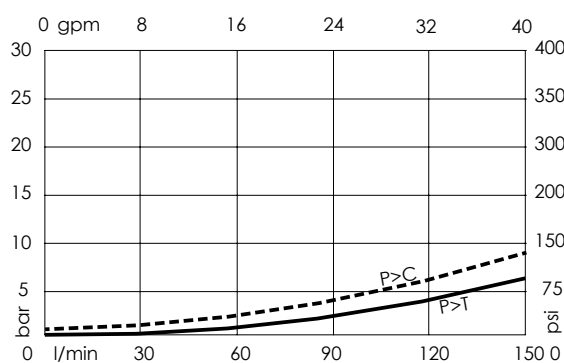
For other configurations/quick codes not available in this catalogue page please consult factory

## SEALING CAP



Ordering code:  
AT000020

## CURVES



## ORDERING CODES

| Quick code | Description               | Ports   |  |
|------------|---------------------------|---|--|
| MT000028   | MTTE-150-SLSN-NP-U11-N350 | P,C,T: 1 1/16" UNF - 2B<br>LS: 9/16" UNF - 2B |  |
|            |                           |   |  |
|            |                           |   |  |
|            |                           |   |  |
|            |                           |   |  |
|            |                           |   |  |