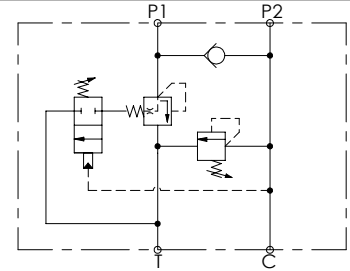
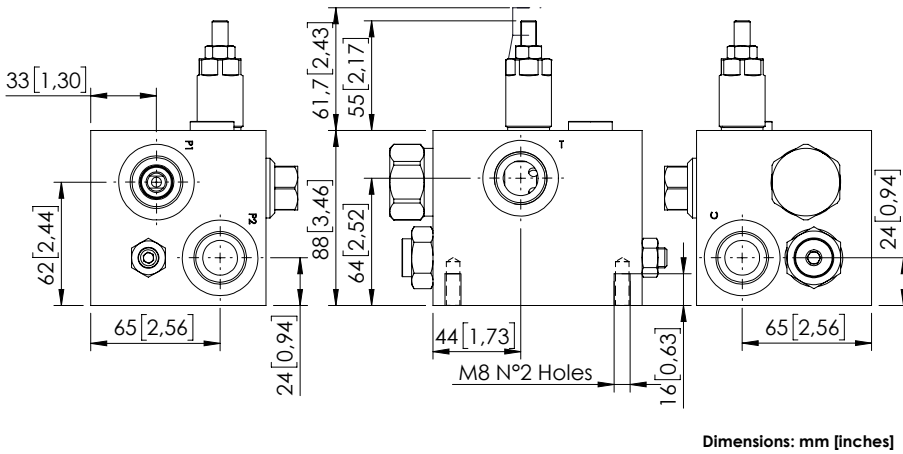
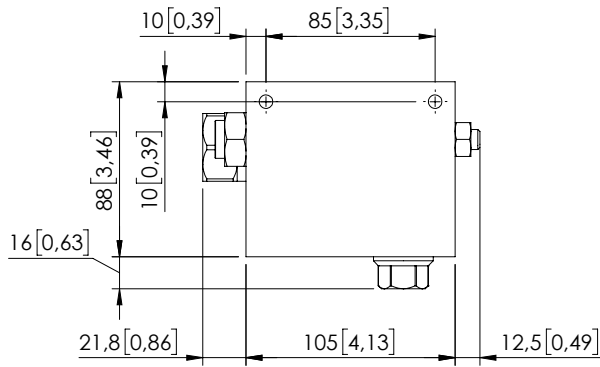


UNLOADING VALVE

# MTSD-150-TLSN



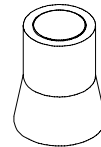
**SPECIFICATIONS**

Max. operating pressure:	<b>300 bar (4300 psi)</b>
Rated flow:	<b>150 l/min (40 gpm)</b>
Weight:	<b>2,54 kg (5,6 lbs)</b>
Manifold:	<b>See table</b>
Contamination class to ISO 4406:	<b>See technical spec.</b>
MTFd:	<b>150 - 1200 years: See technical spec.</b>

**NOTES**

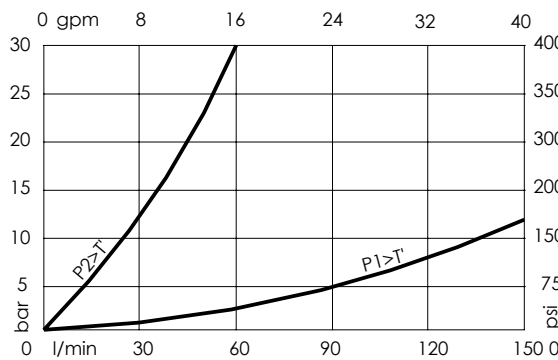
For other configurations/quick codes not available in this catalogue page please consult factory

**SEALING CAP**



Ordering code:  
AT000020

**CURVES**



**ORDERING CODES**

Quick code	Description	Manifold	Ports	Standard setting Q=5 l/min (1,3 gpm)	Setting range	Pressure increase bar/turn (psi/turn)
MT000012	MTSD-150-TLSN-00-G34-N300	Aluminium	P1,P2,C,T: G3/4"	① 50 bar (700 psi) ② 300 bar (4300 psi)	① 15-100 bar (200-1500 psi) ② 100-350 bar (1500-5000 psi)	① 23 (350) ② 91 (1300)
MT000016	MTSD-150-SLSN-00-G34-N300	Steel	P1,P2,C,T: G3/4"	① 50 bar (700 psi) ② 300 bar (4300 psi)	① 15-100 bar (200-1500 psi) ② 100-350 bar (1500-5000 psi)	① 23 (350) ② 91 (1300)