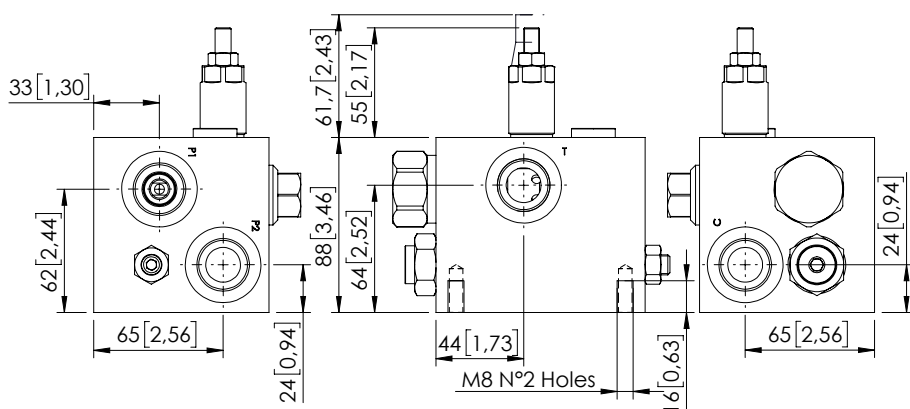
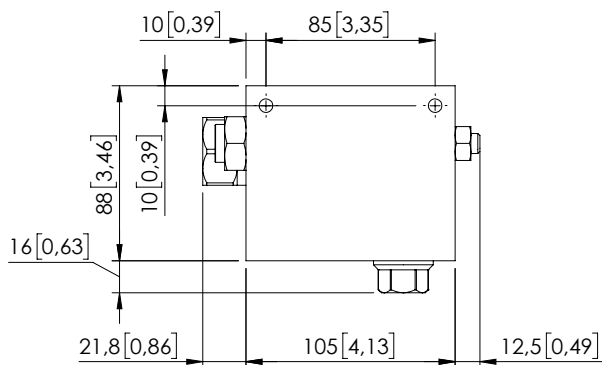
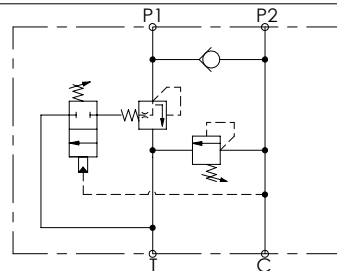


UNLOADING VALVE

MTSD-150-TLSN



Dimensions: mm [inches]



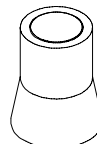
SPECIFICATIONS

Max. operating pressure:	300 bar (4300 psi)
Rated flow:	150 l/min (40 gpm)
Weight:	2,54 kg (5,6 lbs)
Manifold:	See table
Contamination class to ISO 4406:	See technical spec.
MTTFd:	150 years

NOTES

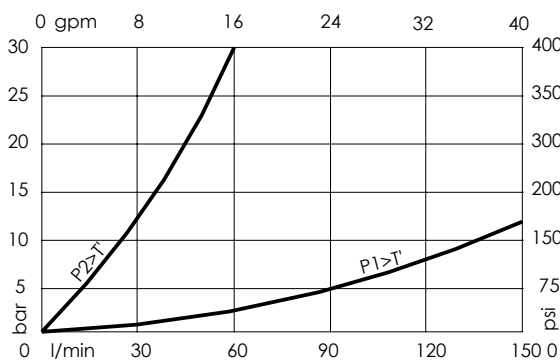
For other configurations/quick codes not available in this catalogue page please consult factory

SEALING CAP



Ordering code:
AT000020

CURVES



ORDERING CODES

Quick code	Description	Manifold	Ports	Standard setting Q=5 l/min (1,3 gpm)	Setting range	Pressure increase bar/turn (psi/turn)
MT000012	MTSD-150-TLSN-00-G34-N300	Aluminium	P1,P2,C,T: G3/4"	① 50 bar (700 psi) ② 300 bar (4300 psi)	① 15-100 bar (200-1500 psi) ② 100-350 bar (1500-5000 psi)	① 23 (350) ② 91 (1300)
MT000016	MTSD-150-SLSN-00-G34-N300	Steel	P1,P2,C,T: G3/4"	① 50 bar (700 psi) ② 300 bar (4300 psi)	① 15-100 bar (200-1500 psi) ② 100-350 bar (1500-5000 psi)	① 23 (350) ② 91 (1300)