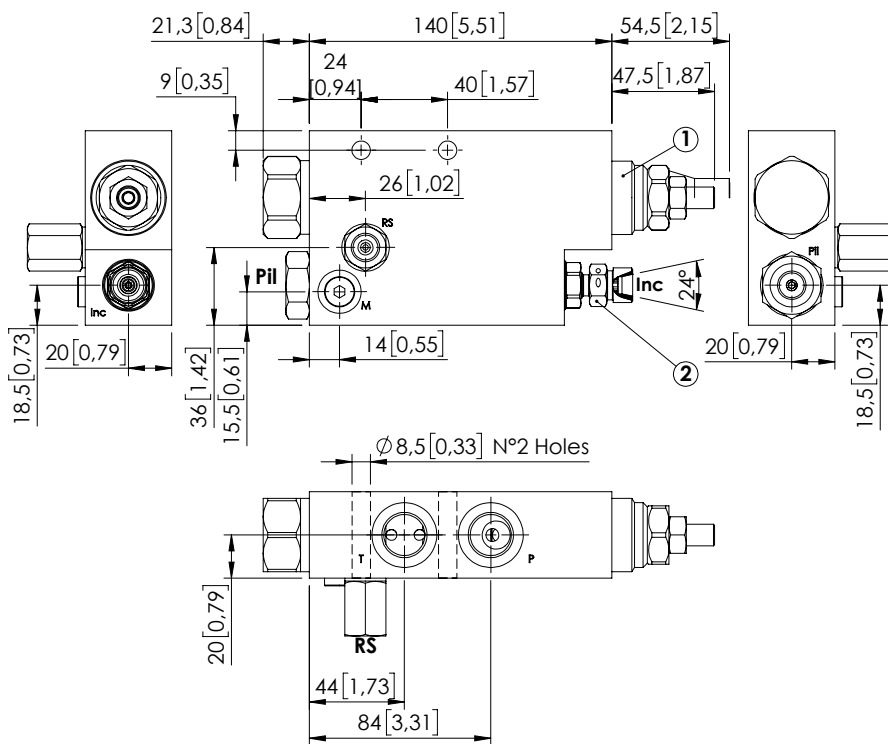
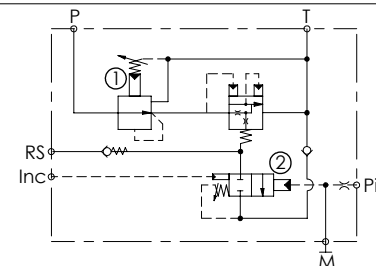


LOAD LIMITING DEVICE

MTSN-120-TLNR

HYDRAULIC PRESSURE
UNLOADING
KICK DOWN SYSTEM

Dimensions: mm [inches]



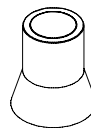
SPECIFICATIONS

Max. operating pressure:	350 bar (5000 psi)
Rated flow:	120 l/min (32 gpm)
Weight:	1,94 kg (4,2 lbs)
Manifold:	Aluminium
Contamination class to ISO 4406:	See technical spec.
MTTFd:	150 years

NOTES

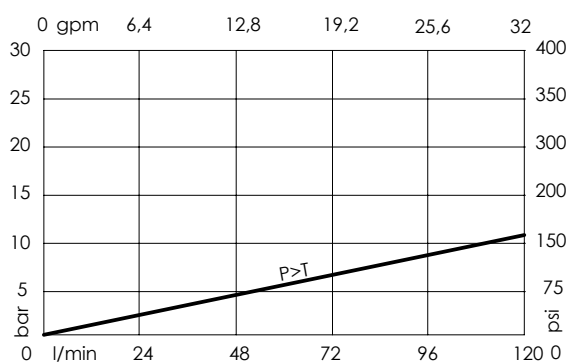
For other configurations/quick codes not available in this catalogue page please consult factory

SEALING CAP



Ordering code:
AT000021

CURVES



ORDERING CODES

Quick code	Description	Ports	Standard setting Q=5 l/min (1,3 gpm)	Setting range	Pressure increase bar/turn (psi/turn)
MT000010	MTSN-120-TLNR-NP-G12-N350	P,T: G 1/2", RS,Pil: G 1/4" Inc: M16x1,5, M: M10x1	① 35 bar (350 psi) ② 350 bar (5000 psi)	① 10-120 bar (150-1700 psi) ② 70-210 bar (1000-3000 psi)	① 37 (550) ② 92 (1300)