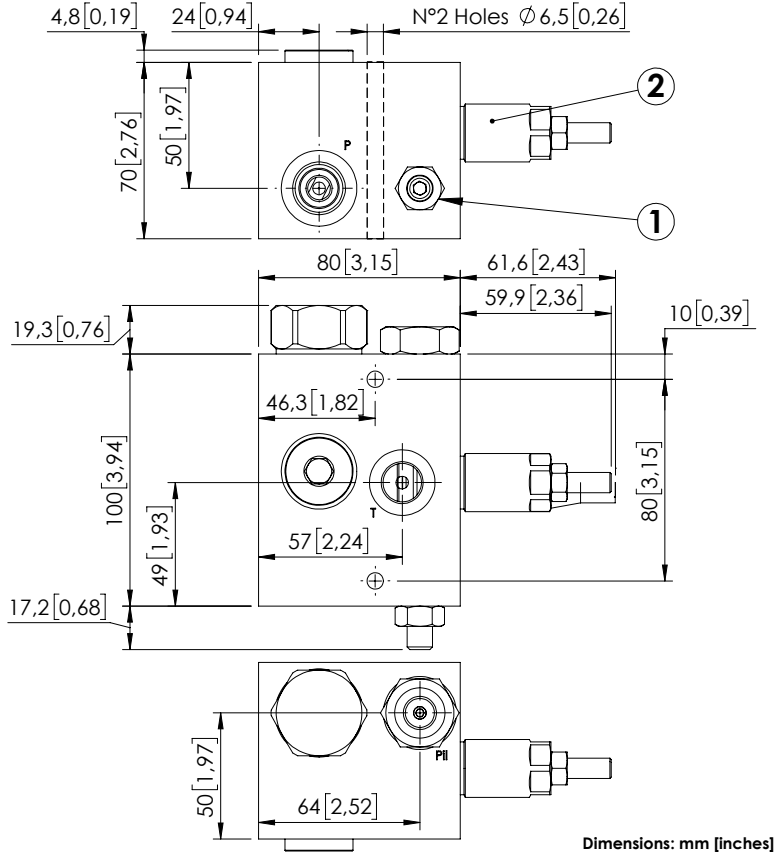
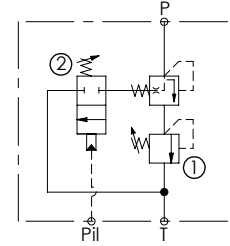


MTLN-030-TLSL



Dimensions: mm [inches]



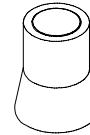
SPECIFICATIONS

Max. operating pressure:	210 bar (3000 psi)
Rated flow:	30 l/min (8 gpm)
Manifold:	Aluminium
Weight:	1,91 kg (4,1 lbs)
Contamination class to ISO 4406:	See technical spec.
MTTfa:	150 - 1200 years: See technical spec.

NOTES

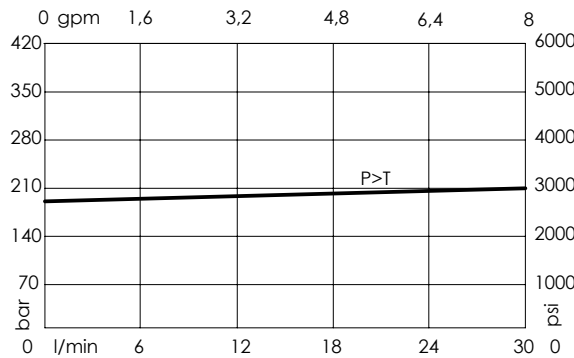
For other configurations/quick codes not available in this catalogue page please consult factory

SEALING CAP



Ordering code:
AT000020

CURVES



ORDERING CODES

Quick code	Description	Ports	Standard setting Q=5 l/min (1,3 gpm)	Adjustment range	Pressure increase bar/turn (psi/turn)
MT000008	MTLN-030-TLSL-NP-G12-N180	P,T: G 1/2" M: G1/4"	① 180 bar (2600 psi) ② 40 bar (600 psi)	① 40-200 bar (600-2900 psi) ② 10-50 bar (150-700 psi)	① 49 (700) ② 10 (150)