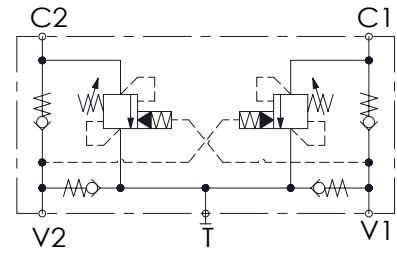
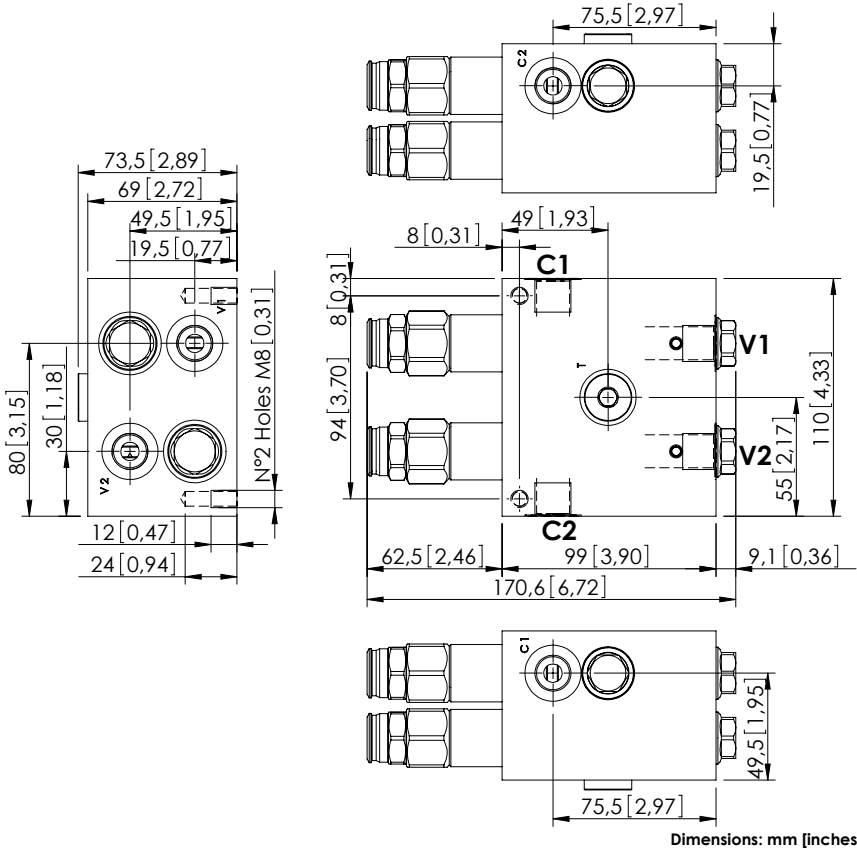


MNDN-040-LLST

STABILIZED



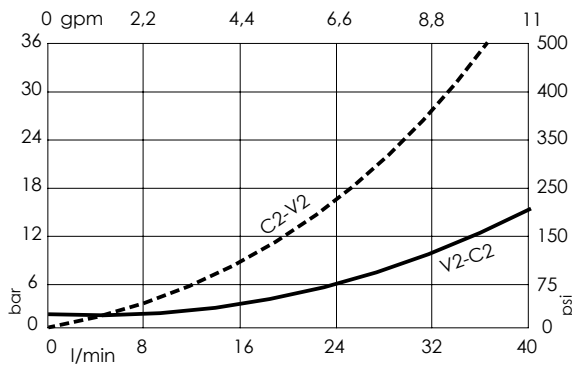
SPECIFICATIONS

Max. operating pressure:	300 bar (4300 psi)
Rated flow:	40 l/min (11 gpm)
Manifold:	Aluminium
Weight:	2,65 kg (5,84 lbs)
Contamination class to ISO 4406:	See technical spec.
MTF _d :	150 - 1200 years: See technical spec.

NOTES

Setting: at least 1.3 times the load induced pressure.
 For other configurations/quick codes not available in this catalogue page please consult factory

CURVES



ORDERING CODES

Quick code	Description	Pilot ratio	Main ports size	Standard setting Q=5 l/min (1,3 gpm)	Adjustment range	Pressure increase
MN000023	MNDN-040-LLST-09-G38-N300	9:1	V1,V2,C1,C2: G 3/8" T: G 3/8"	150 bar (2200 psi)	100-300 bar (1400-4300 psi)	119 bar/turn (1700 psi/turn)
MN000029	MNDN-040-LLST-03-G38-N300	3:1	V1,V2,C1,C2: G 3/8" T: G 3/8"	150 bar (2200 psi)	100-300 bar (1400-4300 psi)	119 bar/turn (1700 psi/turn)