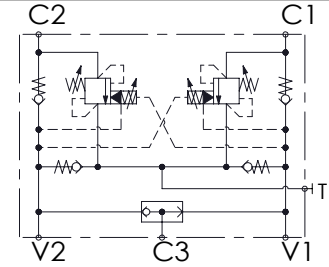
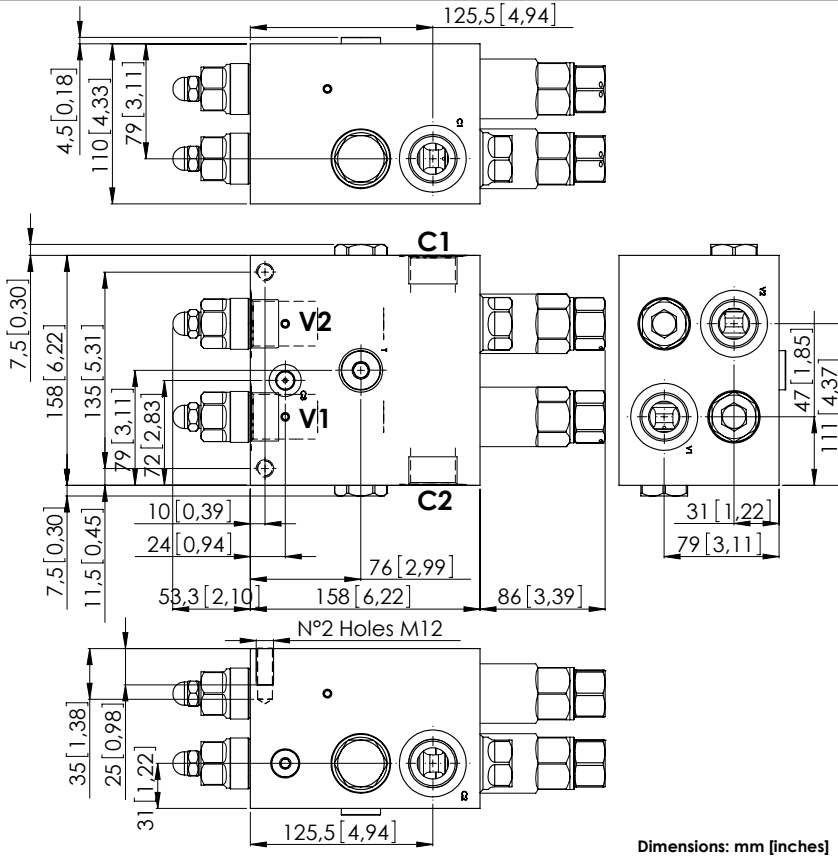


# MNDN-200-LLPV

SOFT STOP  
DUAL SETTING  
WITH BRAKE RELEASE



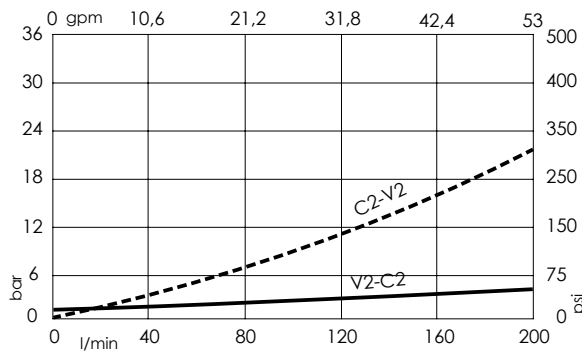
## SPECIFICATIONS

Max. operating pressure:	300 bar (4300 psi)
Rated flow:	200 l/min (53 gpm)
Manifold:	Aluminium
Weight:	9,81 kg (21,63 lbs)
Contamination class to ISO 4406:	See technical spec.
MTF <sub>a</sub> :	150 - 1200 years: See technical spec.

## NOTES

Setting: at least 1.3 times the load induced pressure.  
For other configurations/quick codes not available in this catalogue page please consult factory

## CURVES



## ORDERING CODES

Quick code	Description	Pilot ratio	Main ports size	Standard setting Q=5 l/min (1,3 gpm)	Adjustment range	Pressure increase
MN000022	MNDN-200-LLPV-08-G10-N300	8:1	V1,V2,C1,C2: G1" T: G1/2"; C3: G 1/4"	Start: 300 bar (4300 psi) Brake: 120 bar (1700 psi)	100-300 bar (1400-4300 psi)	65 bar/turn (900 psi/turn)