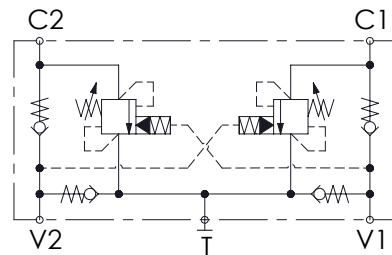


Dimensions: mm [inches]



## SPECIFICATIONS

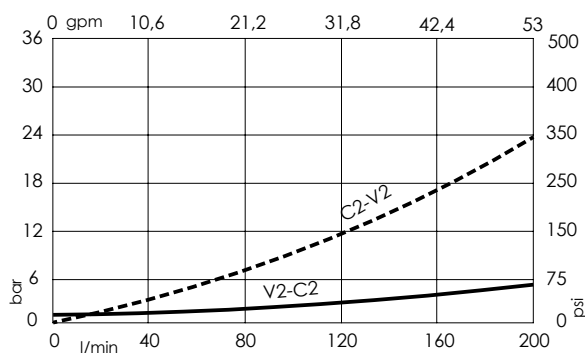
Max. operating pressure:	300 bar (4300 psi)
Rated flow:	200 l/min (53 gpm)
Manifold:	Aluminium
Weight:	9,51 kg (20,97 lbs)
Contamination class to ISO 4406:	See technical spec.
MTFa:	150 years

## NOTES

Setting: at least 1.3 times the load induced pressure.

For other configurations/quick codes not available in this catalogue page please consult factory

## CURVES



## ORDERING CODES

Quick code	Description	Pilot ratio	Main ports size	Standard setting Q=5 l/min (1,3 gpm)	Adjustment range	Pressure increase
MN000020	MNDN-200-LLST-08-G10-N300	8:1	V1,V2,C1,C2: G1" T: G1/2"	150 bar (2200 psi)	120-300 bar (1700-4300 psi)	65 bar/turn (900 psi/turn)