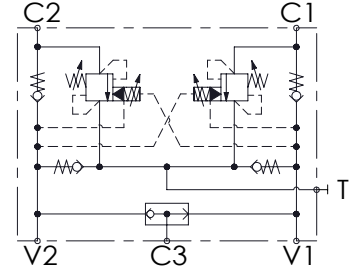
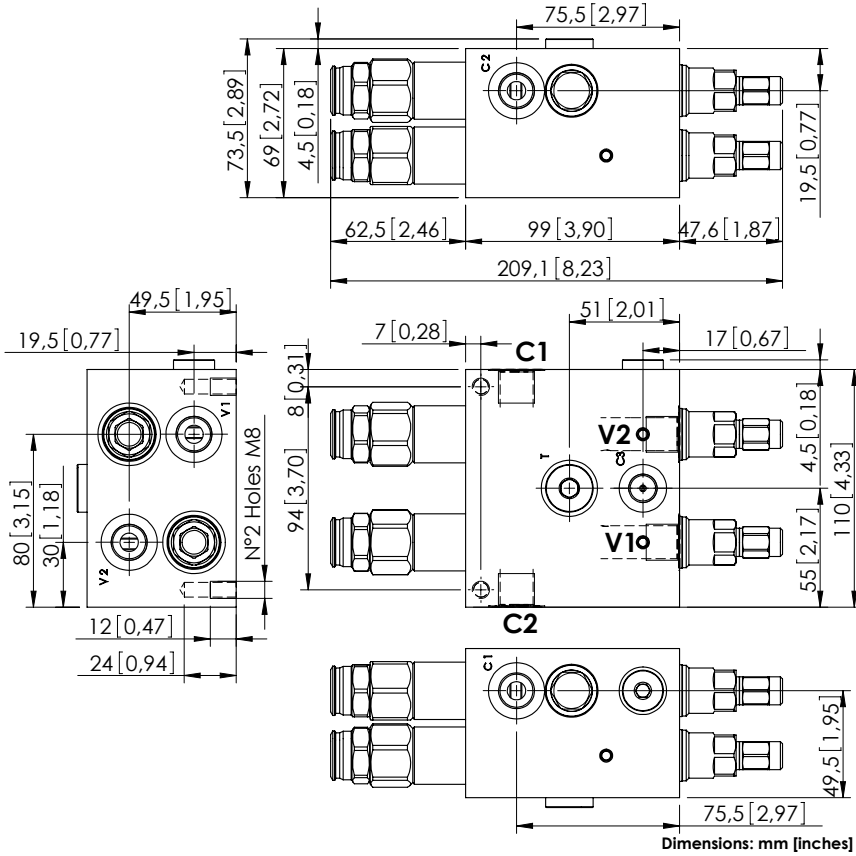


MNDN-040-LLPV

SOFT STOP
DUAL SETTING
WITH BRAKE RELEASE



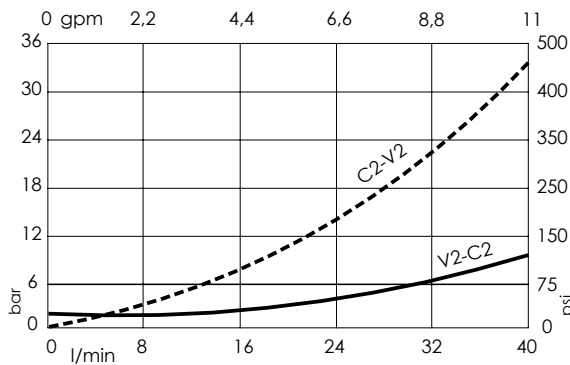
SPECIFICATIONS

Max. operating pressure:	300 bar (4300 psi)
Rated flow:	40 l/min (11 gpm)
Manifold:	Aluminium
Weight:	2,76 kg (6,09 lbs)
Contamination class to ISO 4406:	See technical spec.
MTF _d :	150 - 1200 years: See technical spec.

NOTES

Setting: at least 1.3 times the load induced pressure.
For other configurations/quick codes not available in this catalogue page please consult factory

CURVES



ORDERING CODES

Quick code	Description	Pilot ratio	Main ports size	Standard setting Q=5 l/min (1,3 gpm)	Adjustment range	Pressure increase
MN000019	MNDN-040-LLPV-09-G38-N300	9:1	V1,V2,C1,C2,T: G 3/8" C3 : G 1/4"	Start: 300 bar (4300 psi) Brake: 120 bar (1700 psi)	100-300 bar (1400-4300 psi)	119 bar/turn (1700 psi/turn)
MN000028	MNDN-040-LLPV-09-G38-N200	9:1	V1,V2,C1,C2,T: G 3/8" C3 : G 1/4"	Start: 300 bar (4300 psi) Brake: 90 bar (1300 psi)	60-210 bar (850-3000 psi)	63 bar/turn (900 psi/turn)