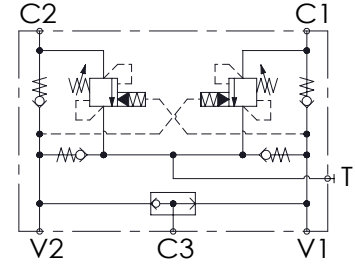
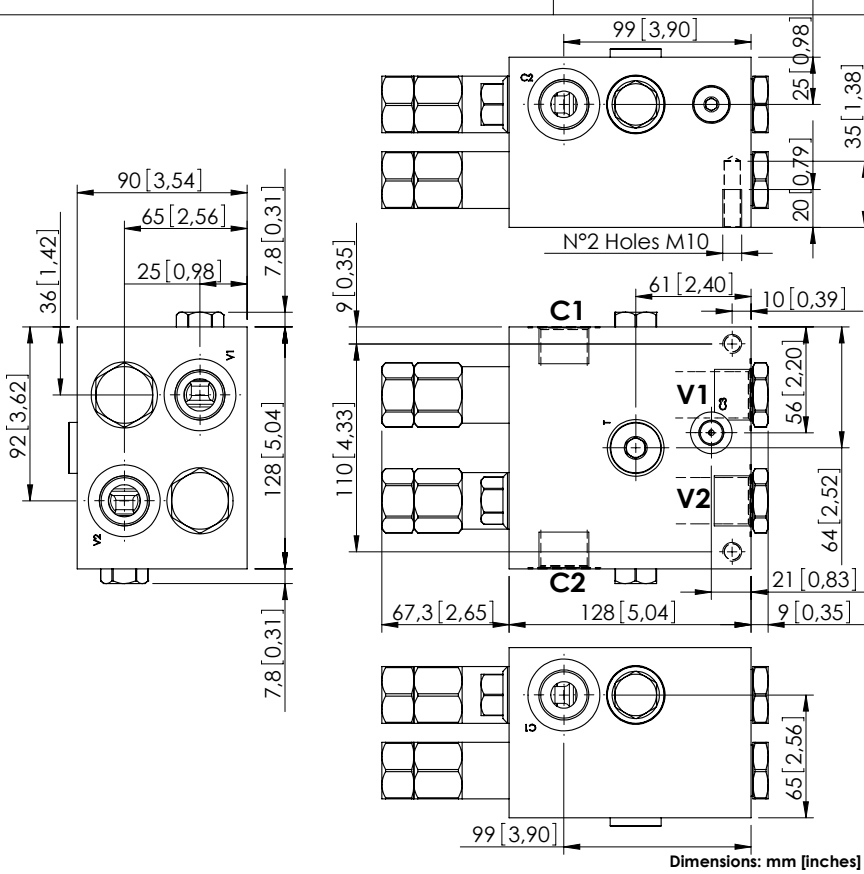


MNDN-120-LLSV

STABILIZED
WITH BRAKE RELEASE



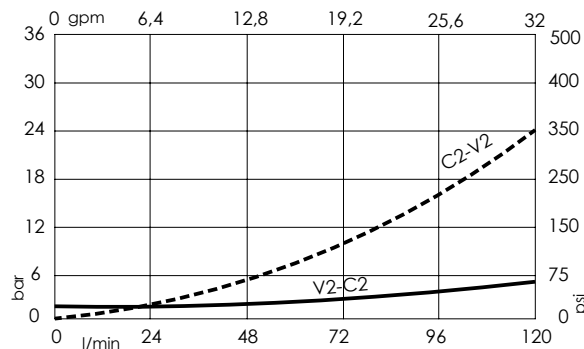
SPECIFICATIONS

Max. operating pressure:	300 bar (4300 psi)
Rated flow:	120 l/min (32 gpm)
Manifold:	Aluminium
Weight:	5,03 kg (11,09 lbs)
Contamination class to ISO 4406:	See technical spec.
MTTF _a :	150 - 1200 years: See technical spec.

NOTES

Setting: at least 1.3 times the load induced pressure.
For other configurations/quick codes not available in this catalogue page please consult factory

CURVES



ORDERING CODES

Quick code	Description	Pilot ratio	Main ports size	Standard setting Q=5 l/min (1,3 gpm)	Adjustment range	Pressure increase
MN000014	MNDN-120-LLSV-08-G34-N300	8:1	V1,V2,C1,C2: G 3/4" T: G 1/2"; C3: G 1/4"	150 bar (2200 psi)	100-300 bar (1400-4300 psi)	111 bar/turn (1600 psi/turn)
MN000015	MNDN-120-LLSV-03-G34-N300	3:1	V1,V2,C1,C2: G 3/4" T: G 1/2"; C3: G 1/4"	150 bar (2200 psi)	100-300 bar (1400-4300 psi)	111 bar/turn (1600 psi/turn)