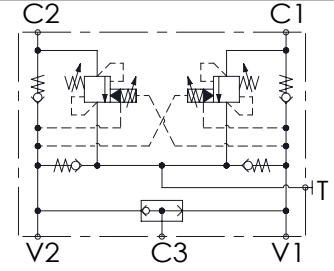
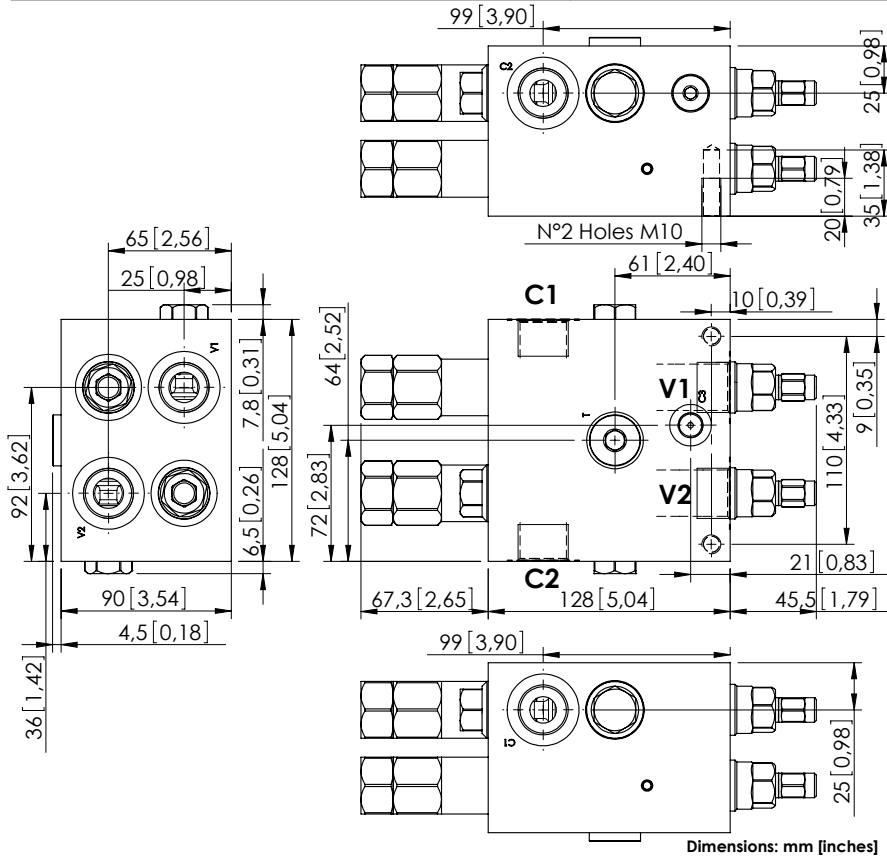


# MNDN-120-LLPV

SOFT STOP  
DUAL SETTING  
WITH BRAKE RELEASE



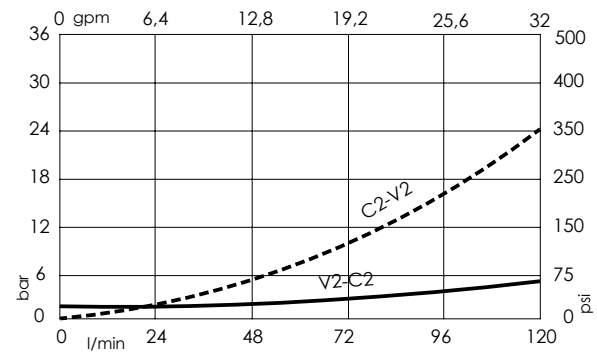
## SPECIFICATIONS

Max. operating pressure:	300 bar (4300 psi)
Rated flow:	120 l/min (32 gpm)
Manifold:	Aluminium
Weight:	5,12 kg (11,29 lbs)
Contamination class to ISO 4406:	See technical spec.
MTF <sub>d</sub> :	150 - 1200 years: See technical spec.

## NOTES

Setting: at least 1.3 times the load induced pressure.  
For other configurations/quick codes not available in this catalogue page please consult factory

## CURVES



## ORDERING CODES

Quick code	Description	Pilot ratio	Main ports size	Standard setting Q=5 l/min (1,3 gpm)	Adjustment range	Pressure increase
MN000010	MNDN-120-LLPV-08-G34-N300	8:1	V1,V2,C1,C2: G 3/4" T: G 1/2"; C3: G 1/4"	Start: 300 bar (4300 psi) Brake: 120 bar (1700 psi)	100-300 bar (1400-4300 psi)	111 bar/turn (1600 psi/turn)
MN000001	MNDN-120-LLPV-08-G34-N200	8:1	V1,V2,C1,C2: G 3/4" T: G 1/2"; C3: G 1/4"	Start: 180 bar (2600 psi) Brake: 90 bar (1300 psi)	70-210 bar (1000-3000 psi)	73 bar/turn (1000 psi/turn)
MN000018	MNDN-120-LLPV-03-G34-N300	3:1	V1,V2,C1,C2: G 3/4" T: G 1/2"; C3: G 1/4"	Start: 300 bar (4300 psi) Brake: 120 bar (1700 psi)	100-300 bar (1400-4300 psi)	111 bar/turn (1600 psi/turn)
MN000048	MNDN-120-LLPV-03-G34-N200	3:1	V1,V2,C1,C2: G 3/4" T: G 1/2"; C3: G 1/4"	Start: 180 bar (2600 psi) Brake: 90 bar (1300 psi)	70-210 bar (1000-3000 psi)	73 bar/turn (1000 psi/turn)