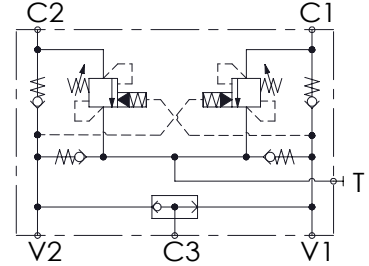
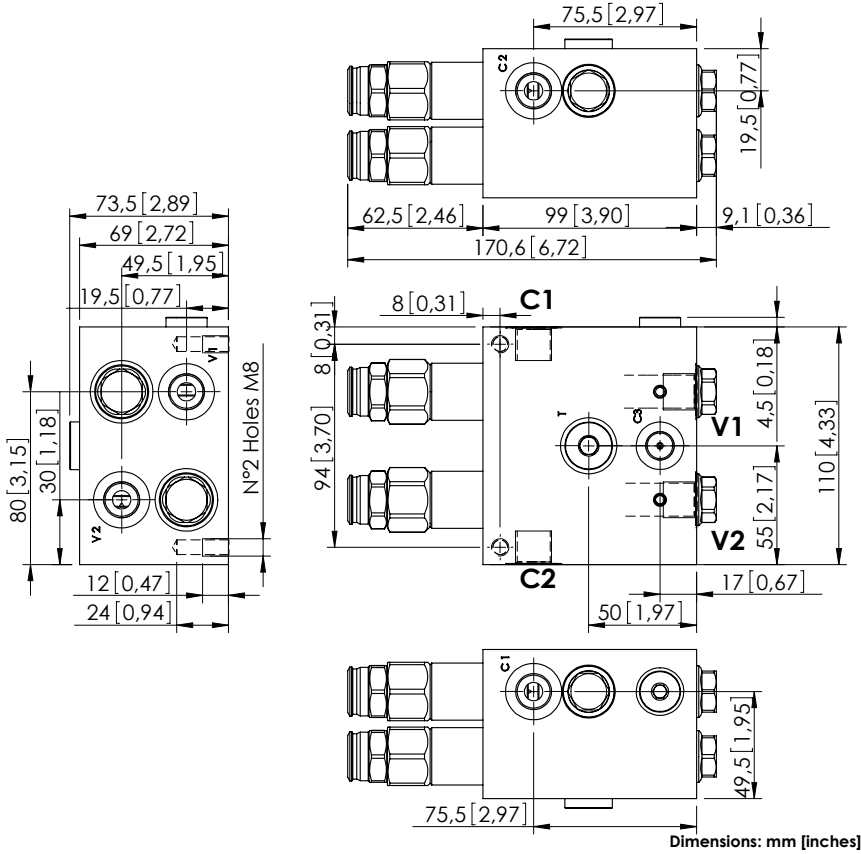


MNDN-040-LLSV

STABILIZED
WITH BRAKE RELEASE



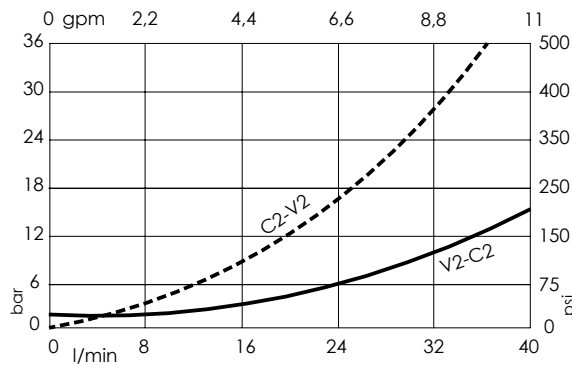
SPECIFICATIONS

Max. operating pressure:	300 bar (4300 psi)
Rated flow:	40 l/min (11 gpm)
Manifold:	Aluminium
Weight:	2,66 kg (5,86 lbs)
Contamination class to ISO 4406:	See technical spec.
MTF _a :	150 - 1200 years: See technical spec.

NOTES

Setting: at least 1.3 times the load induced pressure.
For other configurations/quick codes not available in this catalogue page please consult factory

CURVES



ORDERING CODES

Quick code	Description	Pilot ratio	Main ports size	Standard setting Q=5 l/min (1,3 gpm)	Adjustment range	Pressure increase
MN000008	MNDN-040-LLSV-09-G38-N300	9:1	V1,V2,C1,C2,T: G 3/8" C3: G 1/4"	150 bar (2200 psi)	100-300 bar (1400-4300 psi)	119 bar/turn (1700 psi/turn)
MN000032	MNDN-040-LLSV-09-G38-N200	9:1	V1,V2,C1,C2,T: G 3/8" C3: G 1/4"	150 bar (2200 psi)	70-150 bar (1000-2200 psi)	63 bar/turn (900 psi/turn)
MN000033	MNDN-040-LLSV-03-G38-N300	3:1	V1,V2,C1,C2,T: G 3/8" C3: G 1/4"	150 bar (2200 psi)	100-300 bar (1400-4300 psi)	119 bar/turn (1700 psi/turn)
MN000034	MNDN-040-LLSV-03-G38-N200	3:1	V1,V2,C1,C2,T: G 3/8" C3: G 1/4"	150 bar (2200 psi)	70-150 bar (1000-2200 psi)	63 bar/turn (900 psi/turn)