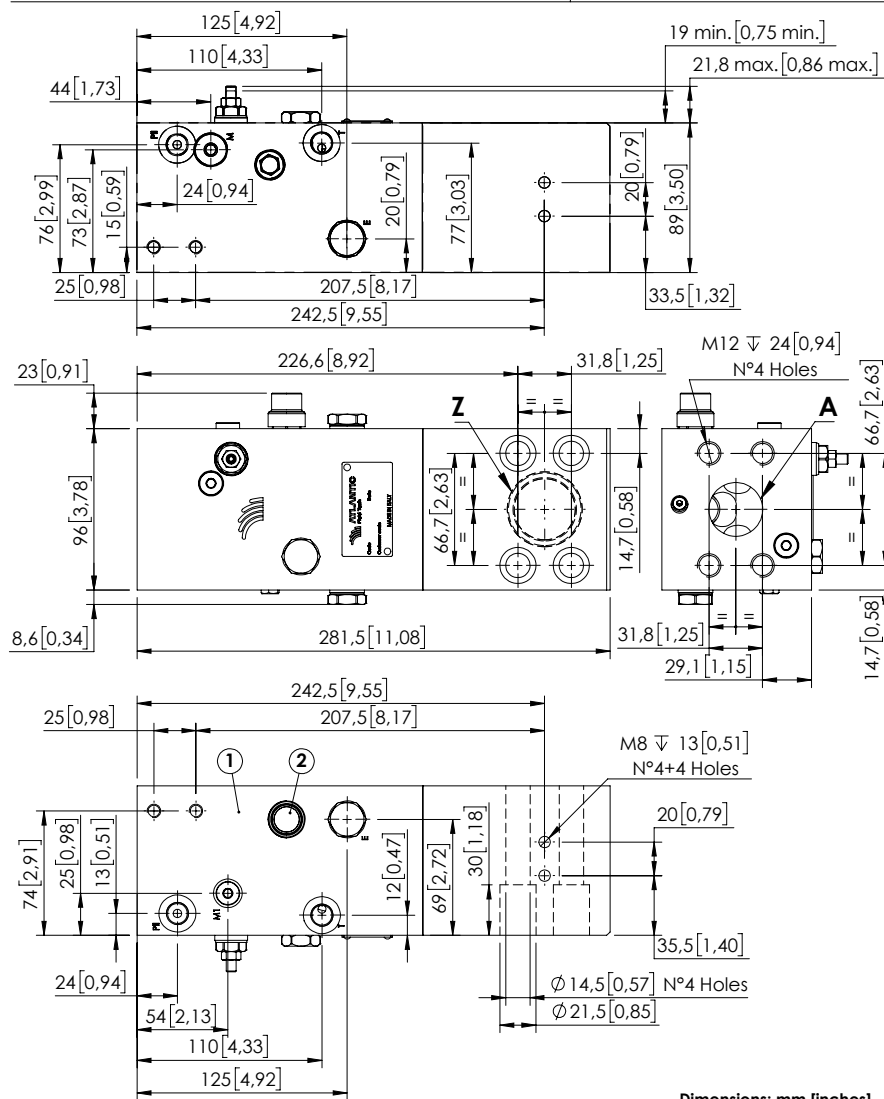
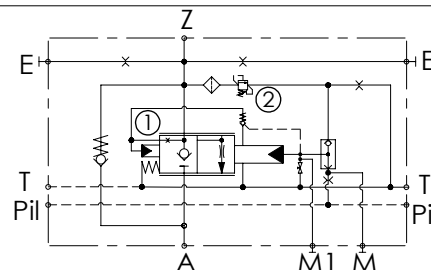


## CHECK AND METERING VALVE

## MLNT-500-AAGN

FLANGED TYPE  
1" - 1/4 SAE 6000

Dimensions: mm [inches]



## SPECIFICATIONS

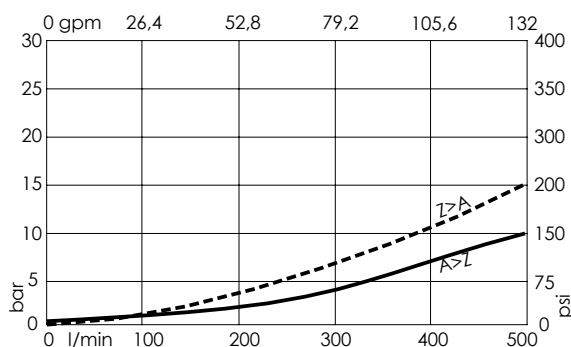
Max. operating pressure:	420 bar (6000 psi)
Rated flow:	500 l/min (132 gpm)
Manifold:	Steel
Weight:	14,92 kg (32,87 lbs)
Contamination class to ISO 4406:	See technical spec.
MTFa:	150 - 1200 years: See technical spec.

## NOTES

When correctly adjusted for the specific excavator installation, these valves meet the requirement of ISO 8643.

For other configurations/quick codes not available in this catalogue page please consult factory

## CURVES



## ORDERING CODES

Quick code	Description	Main ports size	Standard setting	Adjustment range	Pressure increase
ML000333	MLNT-500-AAGN-00-S11-N420	Z,A: 1"-1/4 SAE 6000 E,T,Pil,M: G1/4" M1: G1/8"	① 5,5 bar Cracking press. (75 psi Cracking press.) ② 420 bar @5 l/min (6000 psi @1,3 gpm)	① 2-10 bar (25-150 psi) ② 200-420 bar (2900-6000 psi)	① 2 bar/turn (25 psi/turn) ② 236 bar/turn (3400 psi/turn)

Revision B1