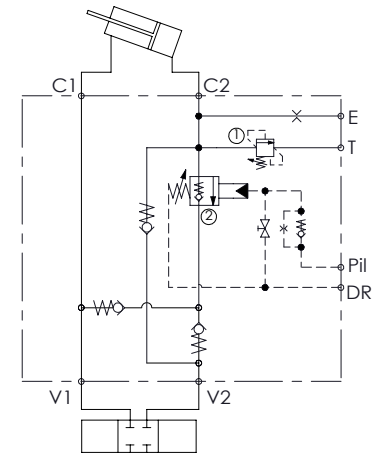
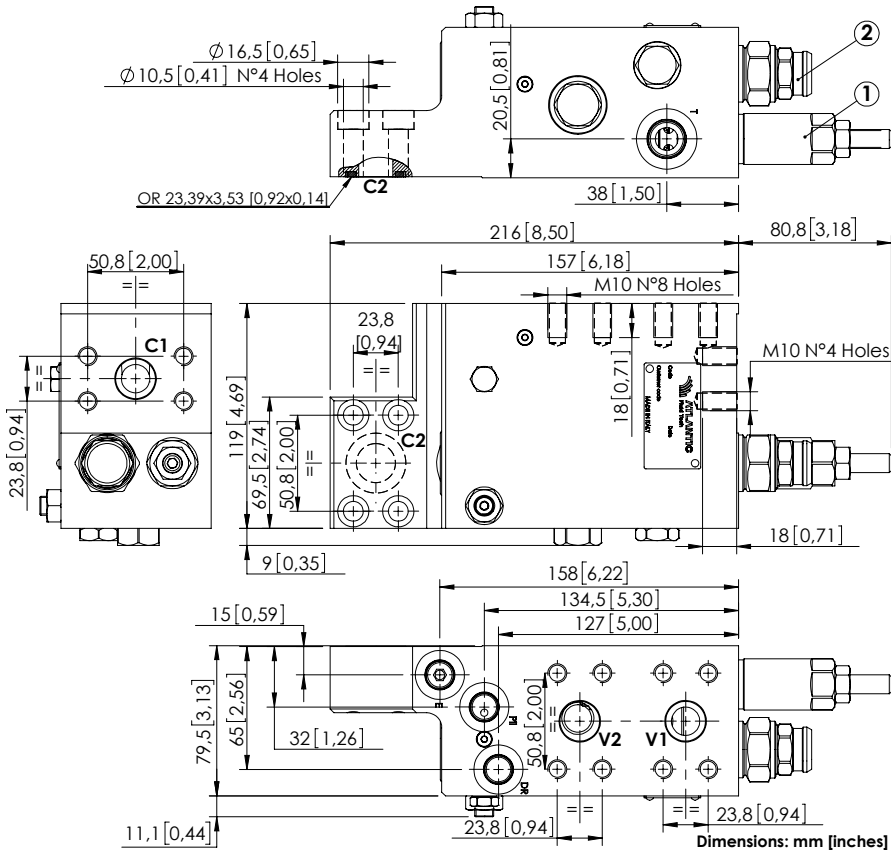


# MLST-250-RAUL

FLANGED TYPE  
3/4" SAE 6000  
WITH OIL RECOVERY



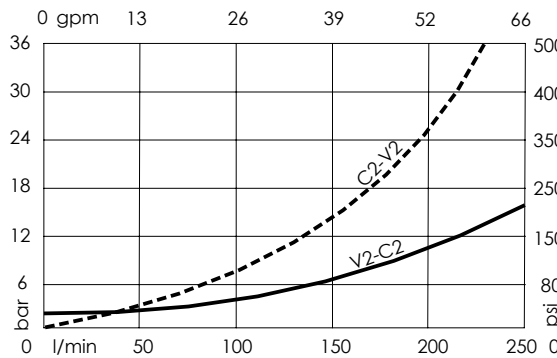
## SPECIFICATIONS

Max. operating pressure:	420 bar (6000 psi)
Rated flow:	250 l/min (66 gpm)
Manifold:	Steel
Weight:	11,72 kg (25,7 lbs)
Contamination class to ISO 4406:	See technical spec.
MTF <sub>a</sub> :	150 - 1200 years: See technical spec.

## NOTES

When correctly adjusted for the specific excavator installation, these valves meet the requirement of ISO 8643.  
For other configurations/quick codes not available in this catalogue page please consult factory

## CURVES



## ORDERING CODES

Quick code	Description	Ports	Standard setting Q=5 l/min (1,3 gpm)	Adjustment range	Pressure increase bar/turn (psi/turn)
ML000266	MLST-250-RAUL-00-S34-N420	V2,V2,C1,C2: 3/4" SAE 6000 E,Pil,Dr: 9/16-18 UNF T: 3/4-16 UNF	① 395 bar @ 5 l/min (5700 psi @ 1,3 gpm) ② 7,9 bar C.P. (120 psi)	① 150-420 bar (2200-6000 psi) ② 3-15 bar (50-200 psi)	① 53 (700) ② 6 (90)