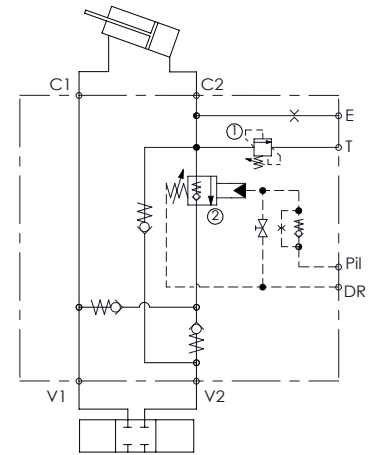
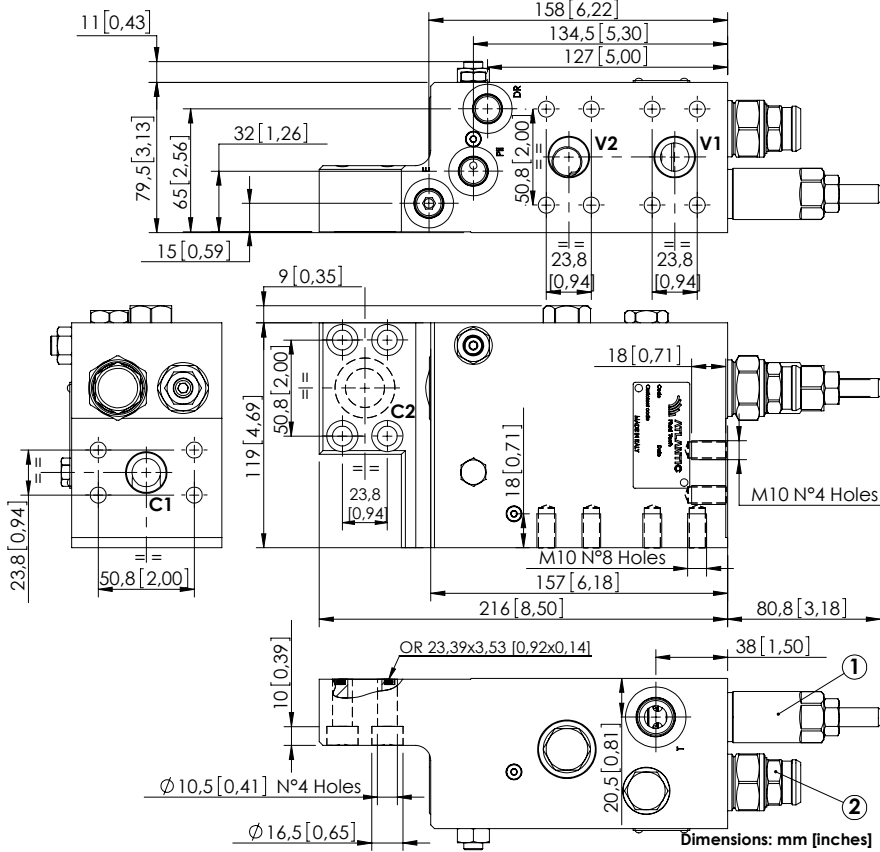


MLST-250-RAUR

FLANGED TYPE
3/4" SAE 6000
WITH OIL RECOVERY



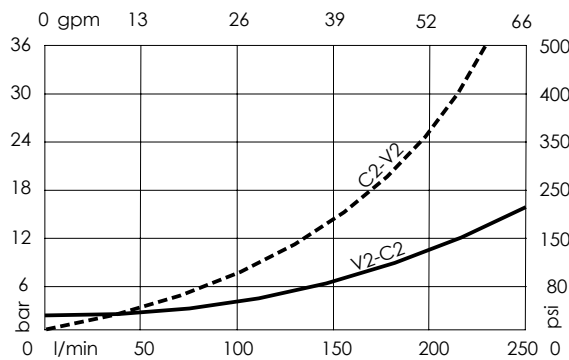
SPECIFICATIONS

Max. operating pressure:	420 bar (6000 psi)
Rated flow:	250 l/min (66 gpm)
Manifold:	Steel
Weight:	11,7 kg (25,7 lbs)
Contamination class to ISO 4406:	See technical spec.
MTF _a :	150 - 1200 years: See technical spec.

NOTES

When correctly adjusted for the specific excavator installation, these valves meet the requirement of ISO 8643.
For other configurations/quick codes not available in this catalogue page please consult factory

CURVES



ORDERING CODES

Quick code	Description	Ports	Standard setting Q=5 l/min (1.3 gpm)	Adjustment range	Pressure increase bar/turn (psi/turn)
ML000265	MLST-250-RAUR-00-S34-N420	V2, V2, C1, C2: 3/4" SAE 6000 E, Pil, Dr: 9/16-18 UNF T: 3/4-16 UNF	① 395 bar @ 5 l/min (5700 psi @ 1.3 gpm) ② 7,9 bar C.P. (120 psi)	① 150-420 bar (2200-6000 psi) ② 3-15 bar (50-200 psi)	① 53 (700) ② 6 (90)