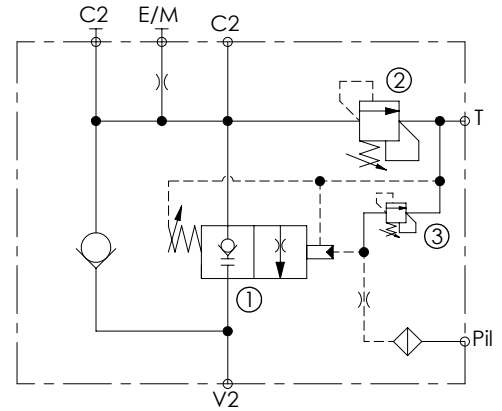
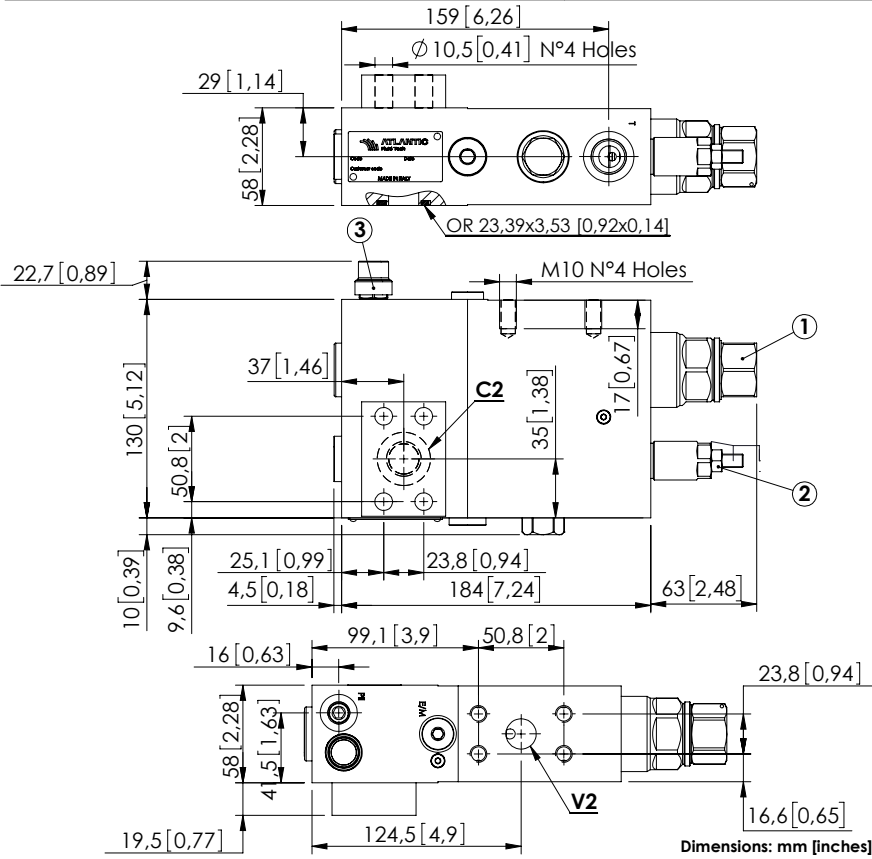


# MLST-250-AAGN



## SPECIFICATIONS

Max. operating pressure:	350 bar (5000 psi)
Rated flow:	250 l/min (66 gpm)
Manifold:	Steel
Weight:	10,56 kg (23,3 lbs)
Contamination class to ISO 4406:	See technical spec.
MTF <sub>d</sub> :	150 - 1200 years: See technical spec.

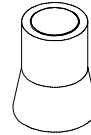
## NOTES

When correctly adjusted for the specific excavator installation, these valves meet the requirement of ISO 8643.

Piston with grooves.

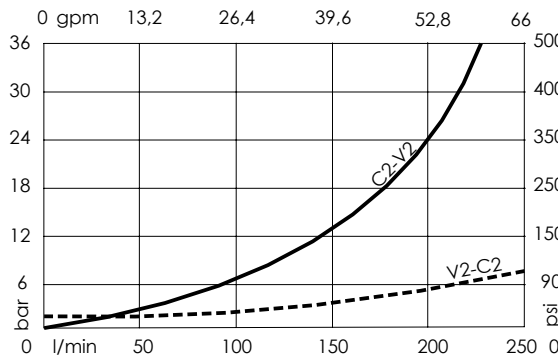
For other configurations/quick codes not available in this catalogue page please consult factory

## SEALING CAP



Ordering code:  
AT000020

## CURVES



## ORDERING CODES

Quick code	Description	Ports	Standard setting Q=5 l/min (1,3 gpm)	Adjustment range	Pressure increase bar/turn (psi/turn)
ML000212	MLST-250-AAGN-00-S34-N350	V2,C2: 3/4" SAE 6000 Pii,E/M: G 1/4" T: G 1/2"	① 9 bar (130 psi) ② 350 bar (5000 psi) ③ 20 bar C.P. (100 psi)	① 2-15 bar (30-200 psi) ② 100-350 bar (1500-5000 psi) ③ 10-40 bar (150-600 psi)	① 1,6 (20) ② 91 bar (1300) ③ 22 bar (300)