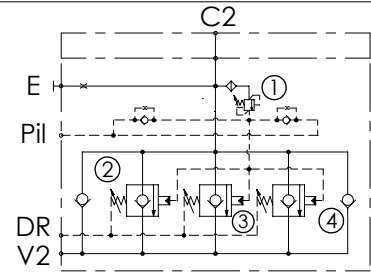
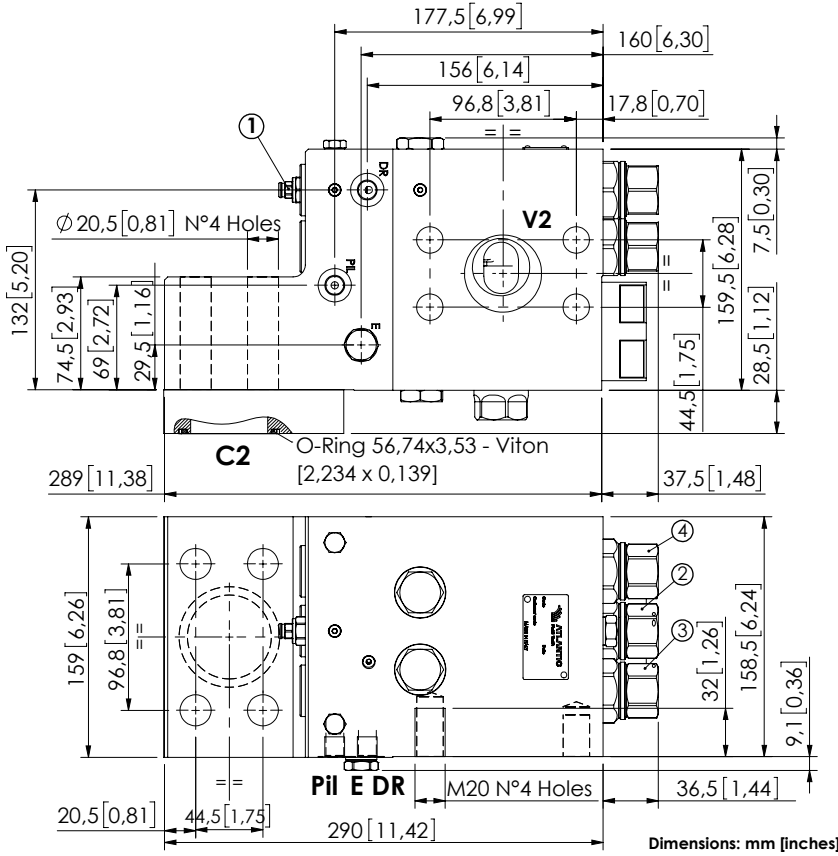


CHECK AND METERING VALVE

MLST-1400-AAGR

FLANGED TYPE
2" SAE 6000
RIGHT VERSION



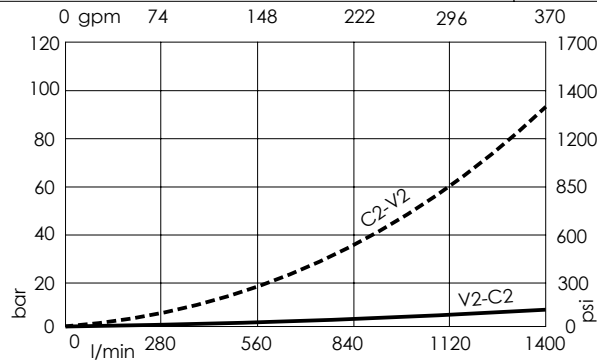
SPECIFICATIONS

Max. operating pressure:	420 bar (6000 psi)
Rated flow:	1400 l/min (370 gpm)
Manifold:	Steel
Weight:	45,75 kg (100,93 lbs)
Contamination class to ISO 4406:	See technical spec.
MTTFa:	150 - 1200 years: See technical spec.

NOTES

When correctly adjusted for the specific excavator installation, these valves meet the requirement of ISO 8643.
For other configurations/quick codes not available in this catalogue page please consult factory

CURVES



ORDERING CODES

Quick code	Description	Main ports size	Standard setting	Adjustment range	Pressure increase
ML000167	MLST-1400-AAGR-00-S20-N420	V2,C2: 2" SAE 6000 E,Pil,DR: G 1/4"	① 400 bar @5 l/min (5800 psi @1,3 gpm) ② 7.5 bar Crack. pr. (100 psi) ③④ 8.5 bar Crack.pr. (120 psi)	① 150-420 bar (2100-6000 psi) ②③④ 3-15 bar (50-200 psi)	① 236 bar/turn (3400 psi/turn) ②③④ 3,4 bar/turn (50 psi/turn)