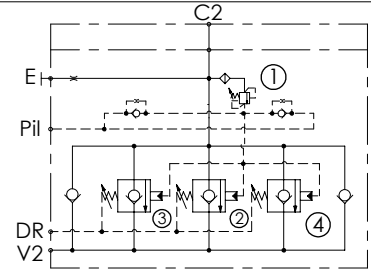
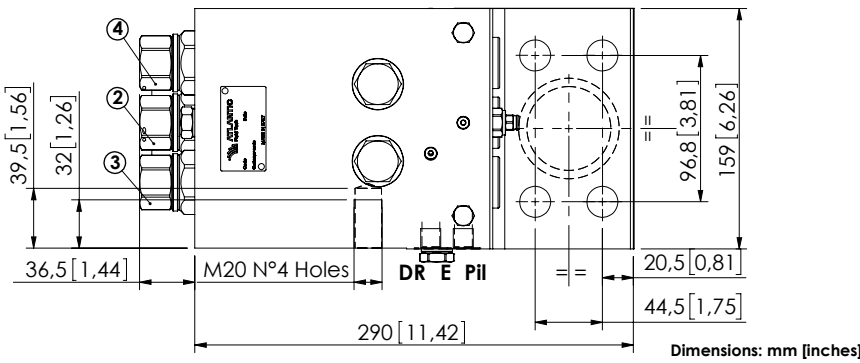
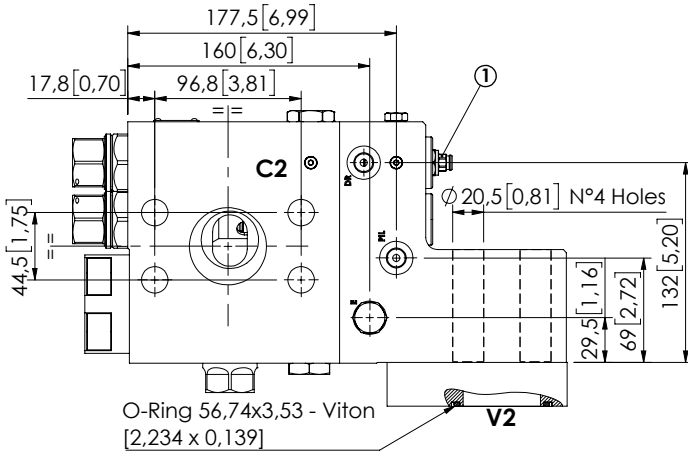


CHECK AND METERING VALVE

# MLST-1400-AAGL

FLANGED TYPE  
2" SAE 6000  
LEFT VERSION



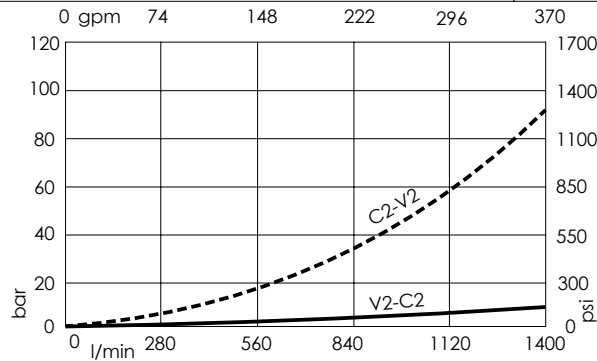
## SPECIFICATIONS

Max. operating pressure:	<b>420 bar</b> (6000 psi)
Rated flow:	<b>1400 l/min</b> (370 gpm)
Manifold:	<b>Steel</b>
Weight:	<b>45,77 kg</b> (100,97 lbs)
Contamination class to ISO 4406:	See technical spec.
MTFa:	<b>150 - 1200 years:</b> See technical spec.

## NOTES

When correctly adjusted for the specific excavator installation, these valves meet the requirement of ISO 8643.  
For other configurations/quick codes not available in this catalogue page please consult factory

## CURVES



## ORDERING CODES

Quick code	Description	Main ports size	Standard setting	Adjustment range	Pressure increase
ML000166	MLST-1400-AAGL-00-S20-N420	V2,C2:2" SAE 6000 E,Pil,T:G 1/4"	① 400 bar @5 l/min (5700 psi @1,3 gpm) ② 7.5 bar Crack. pr. (100 psi) ③④ 8.5 bar Crack.pr. (120 psi)	① 150-420 bar (5000-6000 psi) ②③④ 3-15 bar (50-200 psi)	① 236 bar/turn (3400 psi/turn) ②③④ 3,4 bar/turn (50 psi/turn)