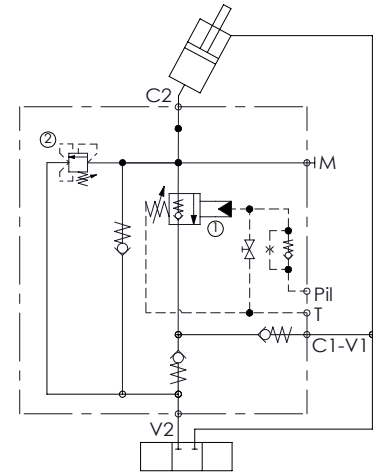
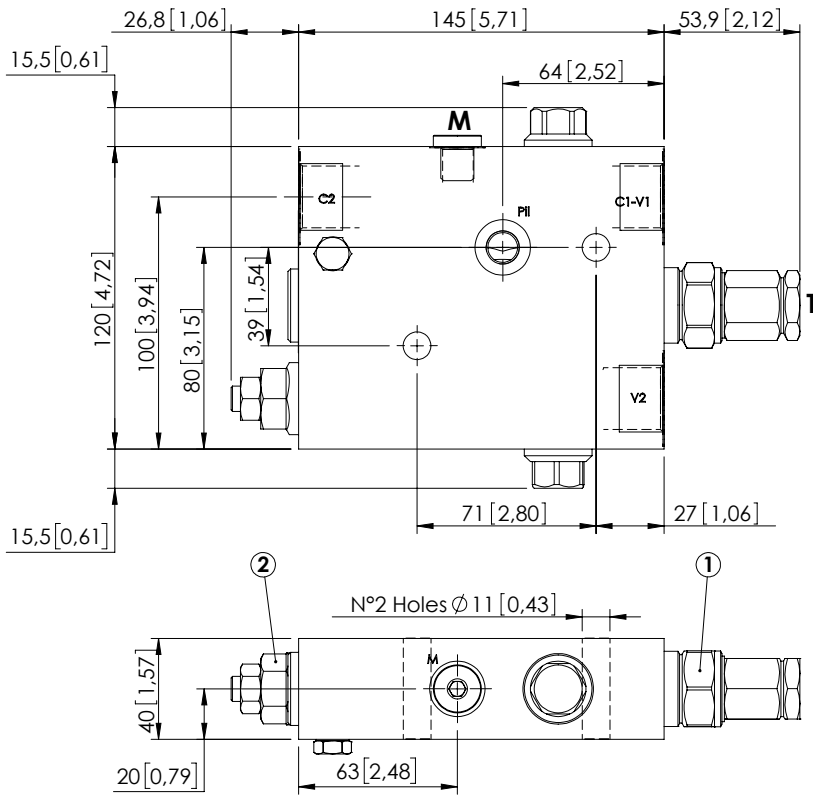


MLST-160-RLGR

WITH OIL RECOVERY



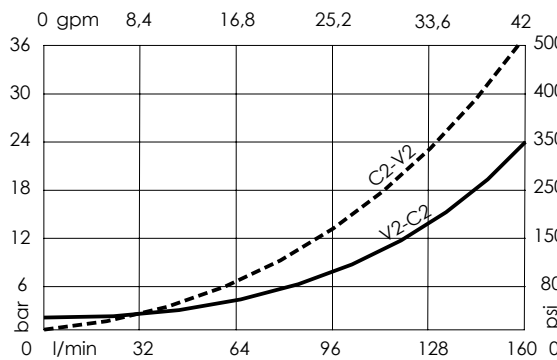
SPECIFICATIONS

Max. operating pressure:	420 bar (6000 psi)
Rated flow:	160 l/min (42 gpm)
Manifold:	Steel
Weight:	5,01 kg (11 lbs)
Contamination class to ISO 4406:	See technical spec.
MTF _a :	150 - 1200 years: See technical spec.

NOTES

When correctly adjusted for the specific excavator installation, these valves meet the requirement of ISO 8643.
For other configurations/quick codes not available in this catalogue page please consult factory

CURVES



ORDERING CODES

Quick code	Description	Ports	Standard setting Q=5 l/min (1,3 gpm)	Adjustment range	Pressure increase
ML000165	MLST-160-RLGR-00-G34-N420	V2,V2: G 3/4" P11,T,M: G 1/4"	① 350 bar @ 5 l/min (5000 psi @ 1,3 gpm) ② 7,5 bar C.P. (100 psi)	① 350-400 bar (5000-5800 psi) ② 3-15 bar (50-200 psi)	① 72 bar/turn (1000 psi/turn) ② 8 bar/turn (120 psi/turn)