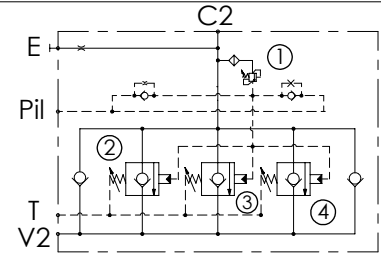
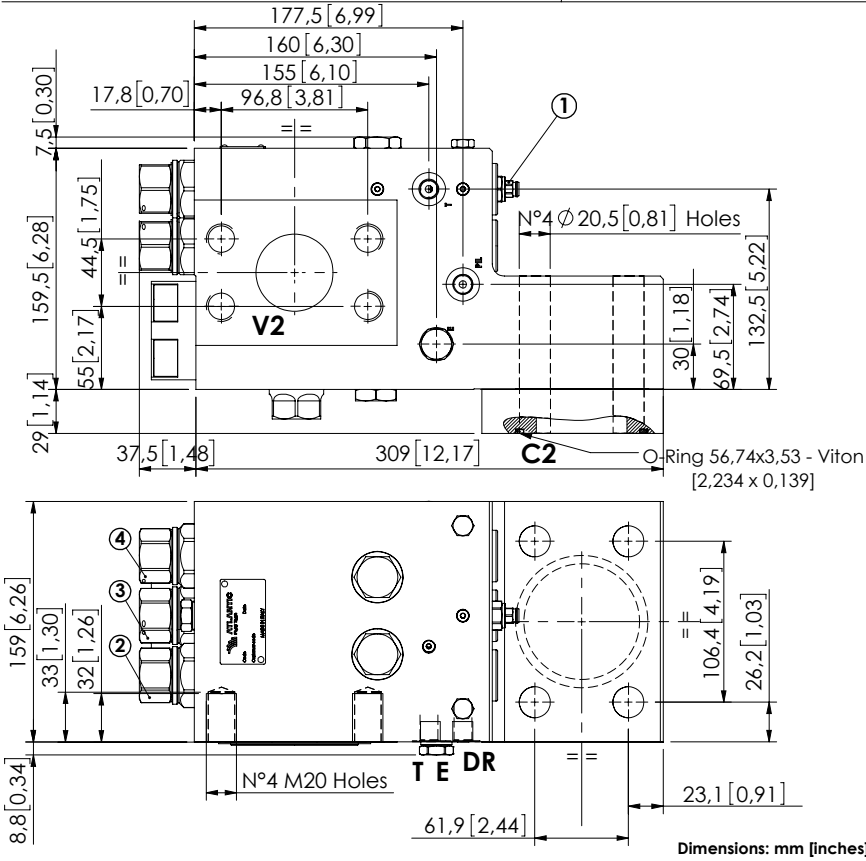


CHECK AND METERING VALVE

# MLST-1500-AAGL

FLANGED TYPE  
3" SAE 3000 / 2" SAE 6000  
LEFT VERSION



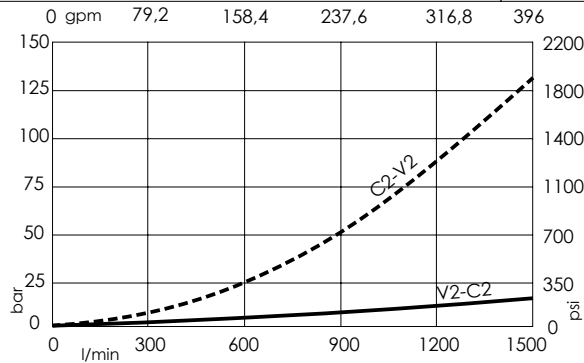
## SPECIFICATIONS

Max. operating pressure:	<b>420 bar (6000 psi)</b>
Rated flow:	<b>1500 l/min (396 gpm)</b>
Manifold:	<b>Steel</b>
Weight:	<b>47,13 kg (103,9 lbs)</b>
Contamination class to ISO 4406:	See technical spec.
MTF <sub>a</sub> :	150 - 1200 years: See technical spec.

## NOTES

When correctly adjusted for the specific excavator installation, these valves meet the requirement of ISO 8643.  
For other configurations/quick codes not available in this catalogue page please consult factory

## CURVES



## ORDERING CODES

Quick code	Description	Main ports size	Standard setting	Adjustment range	Pressure increase
ML000163	MLST-1500-AAGL-00-S30-N420	V2: 2" SAE 6000 C2: 3" SAE 3000 E, Pil, T: G 1/4"	① 400 bar @5 l/min (5800 psi @1,3 gpm) ② ④ 8,5 bar Crack. pr. (120 psi) ③ 7,5 bar Crack. pr. (100 psi)	① 200-420 bar (2800-6000 psi) ② ③ ④ 3-15 bar (50-200 psi)	① 236 bar/turn (3400 psi/turn) ② ③ ④ 3,4 bar/turn (50 psi/turn)