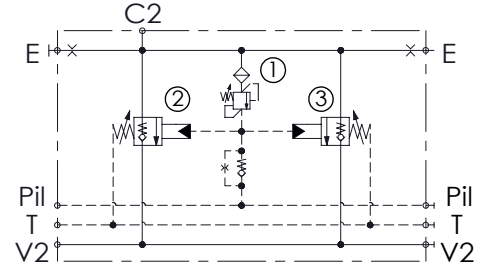
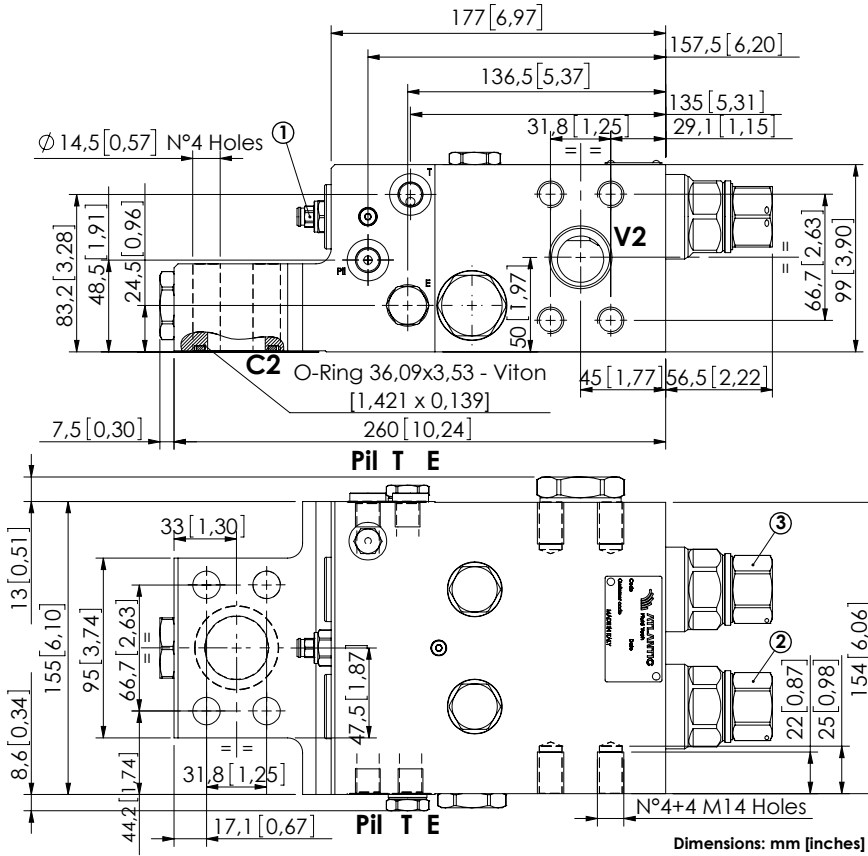


CHECK AND METERING VALVE

MLST-550-AAGN

FLANGED TYPE
1" 1/4 SAE 6000



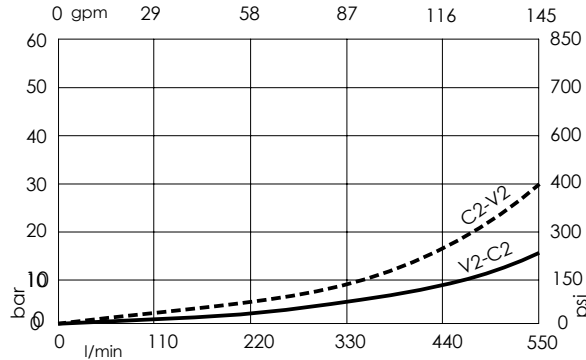
SPECIFICATIONS

Max. operating pressure:	420 bar (6000 psi)
Rated flow:	550 l/min (145 gpm)
Manifold:	Steel
Weight:	22,66 kg (49,96 lbs)
Contamination class to ISO 4406:	See technical spec.
MTF _a :	150 - 1200 years: See technical spec.

NOTES

When correctly adjusted for the specific excavator installation, these valves meet the requirement of ISO 8643.
For other configurations/quick codes not available in this catalogue page please consult factory

CURVES



ORDERING CODES

Quick code	Description	Main ports size	Standard setting	Adjustment range	Pressure increase
ML000161	MLST-500-AAGN-00-S11-N420	V2,C2:1" 1/4 SAE 6000 E,Pil,T:G 1/4"	① 350 bar @5 l/min (5000 psi @1,3 gpm) ②③ 7.5 bar (100 psi) Crack. pr.	① 150-420 bar (2100-6000 psi) ②③ 3-15 bar (50-200 psi)	① 236 bar/turn (3400 psi/turn) ②③ 3,4 bar/turn (50 psi/turn)