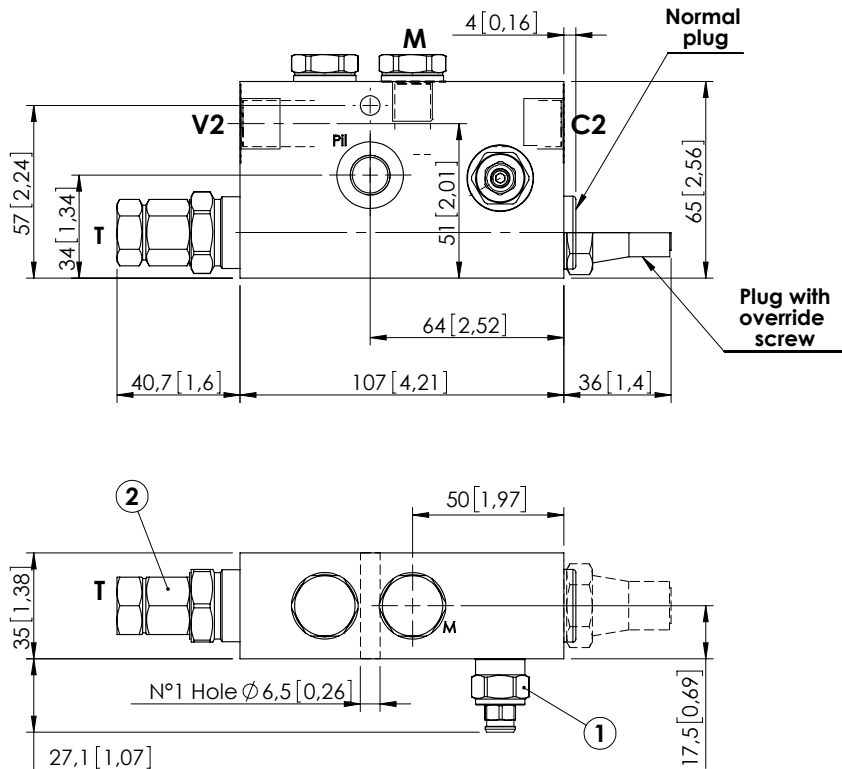


CHECK AND METERING VALVE

MLST-040-ALGL

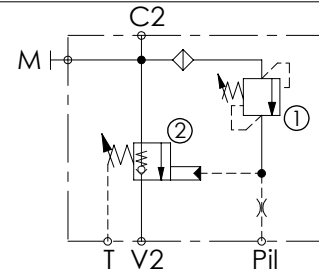
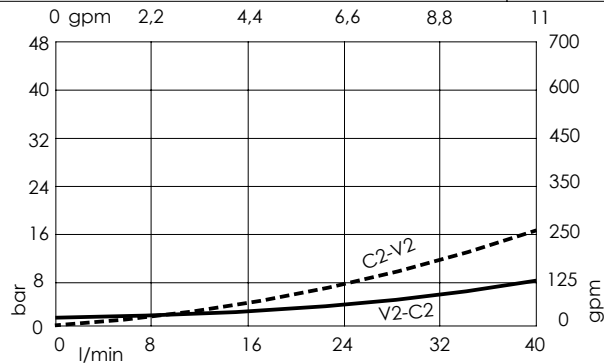
IN LINE VERSION
LEFT VERSION

Dimensions: mm [inches]

NOTES

When correctly adjusted for the specific excavator installation, these valves meet the requirement of ISO 8643.
For other configurations/quick codes not available in this catalogue page please consult factory

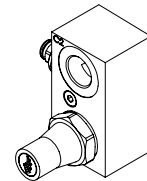
CURVES



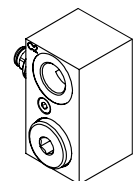
SPECIFICATIONS

| | |
|----------------------------------|---------------------|
| Max. operating pressure: | 420 bar (6000 psi) |
| Rated flow: | 40 l/min (11 gpm) |
| Manifold: | Steel |
| Weight: | 1,86 kg (4,1 lbs) |
| Contamination class to ISO 4406: | See technical spec. |
| MTTFa: | 150 years |

OPTIONS



Plug with override screw



Normal plug

ORDERING CODES

| Quick code | Description | Main ports size | Plug with override screw | Standard setting | Adjustment range | Pressure increase |
|------------|---------------------------|--------------------------------------|--------------------------|--|--|---|
| ML000145 | MLST-040-ALGL-00-G38-N420 | V2,C2: G 3/8" P11,T,M: G 1/4" | No | ① 350 bar @5 l/min (5000 psi @1,3 gpm) ② 7.5 bar (100 psi) Crack. pr. | ① 150-420 bar (2100-6000 psi) ② 3-15 bar (50-200 psi) | ① 236 bar/turn (3400 psi/turn) ② 6.7 bar/turn (100 psi/turn) |
| ML000146 | MLST-040-ALGL-00-G38-E420 | V2,C2: G 3/8" P11,T,M: G 1/4" | Yes | ① 350 bar @5 l/min (5000 psi @1,3 gpm) ② 7.5 bar (100 psi) Crack. pr. | ① 150-420 bar (2100-6000 psi) ② 3-15 bar (50-200 psi) | ① 236 bar/turn (3400 psi/turn) ② 6.7 bar/turn (100 psi/turn) |
| ML000187 | MLST-040-ALJL-00-J38-N420 | V2,C2: JIS 3/8" P11,T,M: JIS 1/4" | No | ① 350 bar @5 l/min (5000 psi @1,3 gpm) ② 7.5 bar (100 psi) Crack. pr. | ① 150-420 bar (2100-6000 psi) ② 3-15 bar (50-200 psi) | ① 236 bar/turn (3400 psi/turn) ② 6.7 bar/turn (100 psi/turn) |
| ML000188 | MLST-040-ALJL-00-J38-E420 | V2,C2: JIS 3/8" P11,T,M: JIS 1/4" | Yes | ① 350 bar @5 l/min (5000 psi @1,3 gpm) ② 7.5 bar (100 psi) Crack. pr. | ① 150-420 bar (2100-6000 psi) ② 3-15 bar (50-200 psi) | ① 236 bar/turn (3400 psi/turn) ② 6.7 bar/turn (100 psi/turn) |
| | | | | | | |
| | | | | | | |