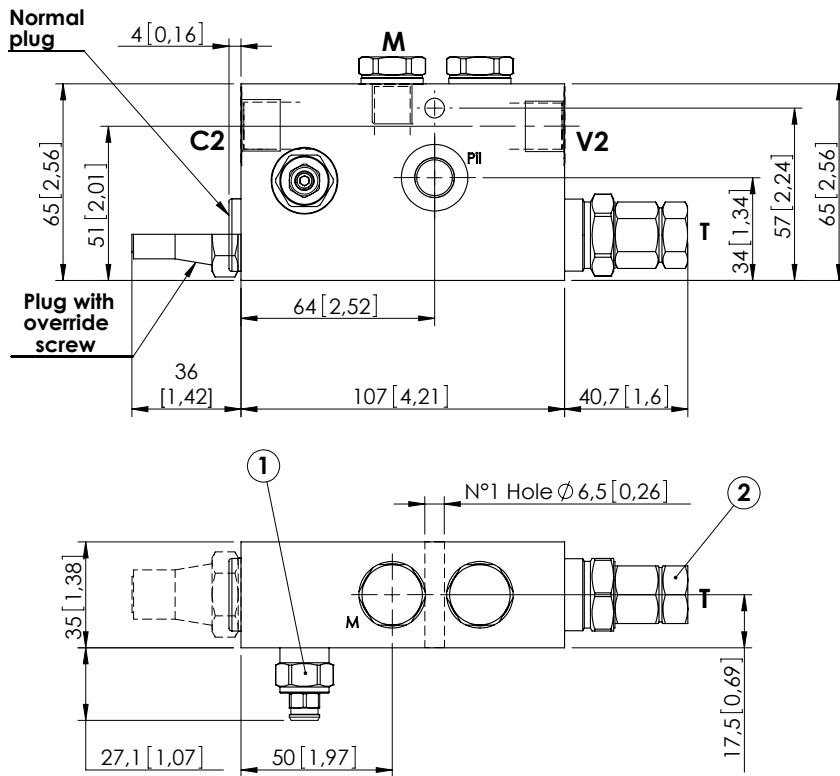


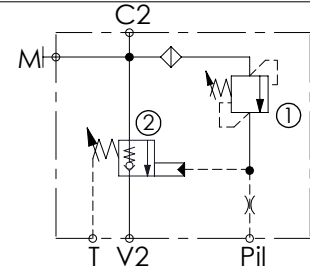
CHECK AND METERING VALVE

MLST-040-ALGR

IN LINE VERSION
RIGHT VERSION



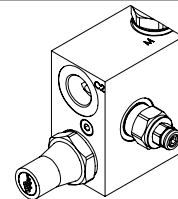
Dimensions: mm [inches]



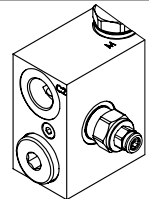
SPECIFICATIONS

Max. operating pressure:	420 bar (6000 psi)
Rated flow:	40 l/min (11 gpm)
Manifold:	Steel
Weight:	1,86 kg (4,1 lbs)
Contamination class to ISO 4406:	See technical spec.
MTF _a :	150 - 1200 years: See technical spec.

OPTIONS



Plug with override screw

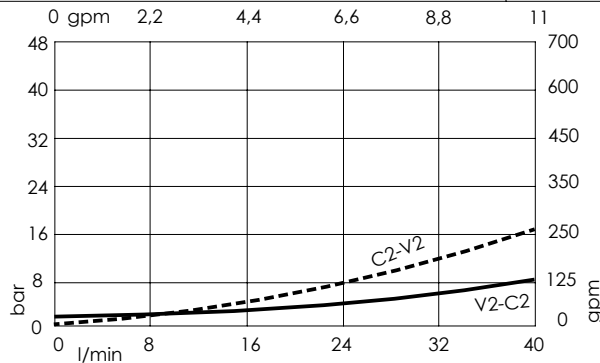


Normal plug

NOTES

When correctly adjusted for the specific excavator installation, these valves meet the requirement of ISO 8643.
For other configurations/quick codes not available in this catalogue page please consult factory

CURVES



ORDERING CODES

Quick code	Description	Main ports size	Plug with override screw	Standard setting	Adjustment range	Pressure increase
ML000143	MLST-040-ALGR-00-G38-N420	V2,C2: G 3/8" Pil,T,M: G 1/4"	No	① 350 bar @5 l/min (5000 psi @1,3 gpm) ② 7.5 bar (100 psi) Crack. pr.	① 150-420 bar (2100-6000 psi) ③ 3-15 bar (50-200 psi)	① 236 bar/turn (3400 psi/turn) ② 6.7 bar/turn (100 psi/turn)
ML000144	MLST-040-ALGR-00-G38-E420	V2,C2: G 3/8" Pil,T,M: G 1/4"	Yes	① 350 bar @5 l/min (5000 psi @1,3 gpm) ② 7.5 bar (100 psi) Crack. pr.	① 150-420 bar (2100-6000 psi) ③ 3-15 bar (50-200 psi)	① 236 bar/turn (3400 psi/turn) ② 6.7 bar/turn (100 psi/turn)
ML000185	MLST-040-ALJR-00-J38-N420	V2,C2: JIS 3/8" Pil,T,M: JIS 1/4"	No	① 350 bar @5 l/min (5000 psi @1,3 gpm) ② 7.5 bar (100 psi) Crack. pr.	① 150-420 bar (2100-6000 psi) ③ 3-15 bar (50-200 psi)	① 236 bar/turn (3400 psi/turn) ② 6.7 bar/turn (100 psi/turn)
ML000186	MLST-040-ALJR-00-J38-E420	V2,C2: JIS 3/8" Pil,T,M: JIS 1/4"	Yes	① 350 bar @5 l/min (5000 psi @1,3 gpm) ② 7.5 bar (100 psi) Crack. pr.	① 150-420 bar (2100-6000 psi) ③ 3-15 bar (50-200 psi)	① 236 bar/turn (3400 psi/turn) ② 6.7 bar/turn (100 psi/turn)