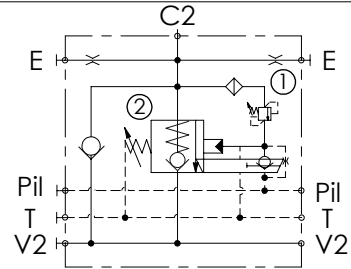
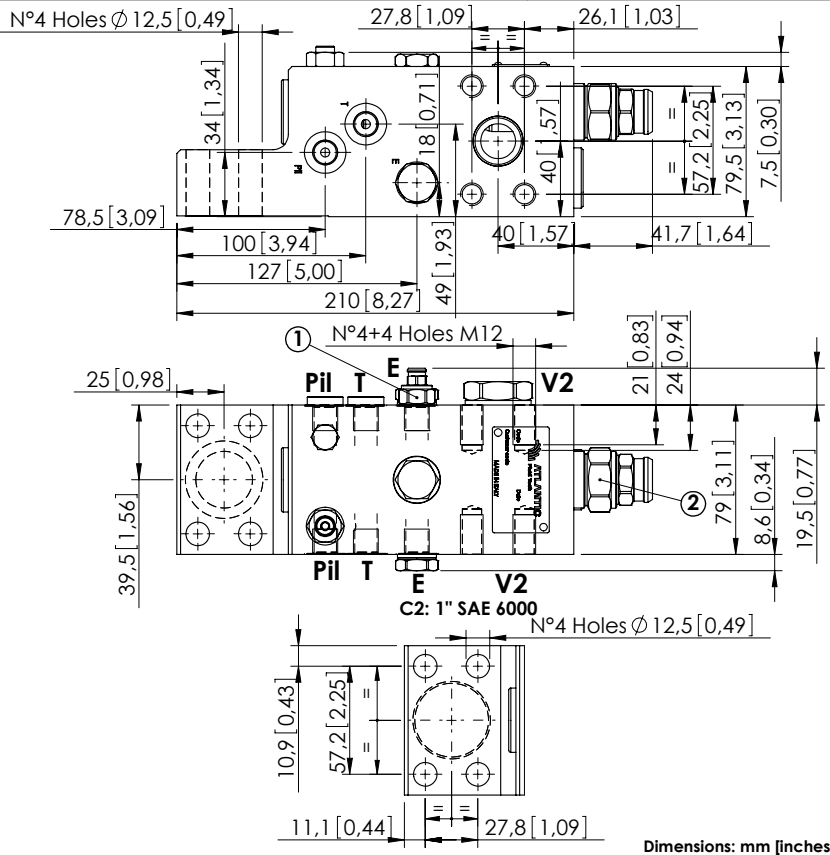


CHECK AND METERING VALVE

# MLST-200-AAGN

FLANGED TYPE  
1" SAE 6000



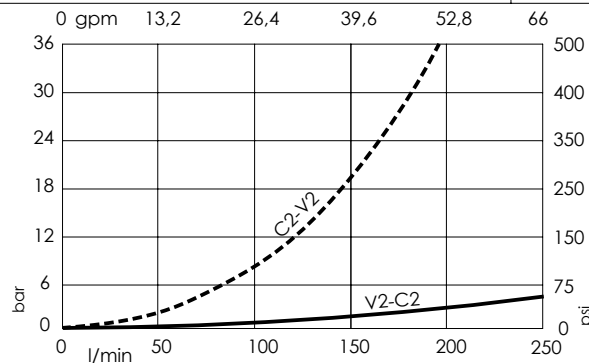
## SPECIFICATIONS

Max. operating pressure:	420 bar (6000 psi)
Rated flow:	250 l/min (66 gpm)
Manifold:	Steel
Weight:	8,01 kg (17,66 lbs)
Contamination class to ISO 4406:	See technical spec.
MTF <sub>a</sub> :	150 - 1200 years: See technical spec.

## NOTES

When correctly adjusted for the specific excavator installation, these valves meet the requirement of ISO 8643.  
For other configurations/quick codes not available in this catalogue page please consult factory

## CURVES



## ORDERING CODES

Quick code	Description	Main ports size	Standard setting	Adjustment range	Pressure increase
ML000138	MLLT-200-AAGR-00-S10-N420	V2,C2: 1" SAE 6000 E,P11,T: G 1/4"	① 350 bar @5 l/min (5000 psi @1,3 gpm) ② 7.5 bar (100 psi) Crack. pr.	① 150-420 bar (2100-6000 psi) ② 3-15 bar (50-200 psi)	① 236 bar/turn (3400 psi/turn) ② 5 bar/turn (70 psi/turn)