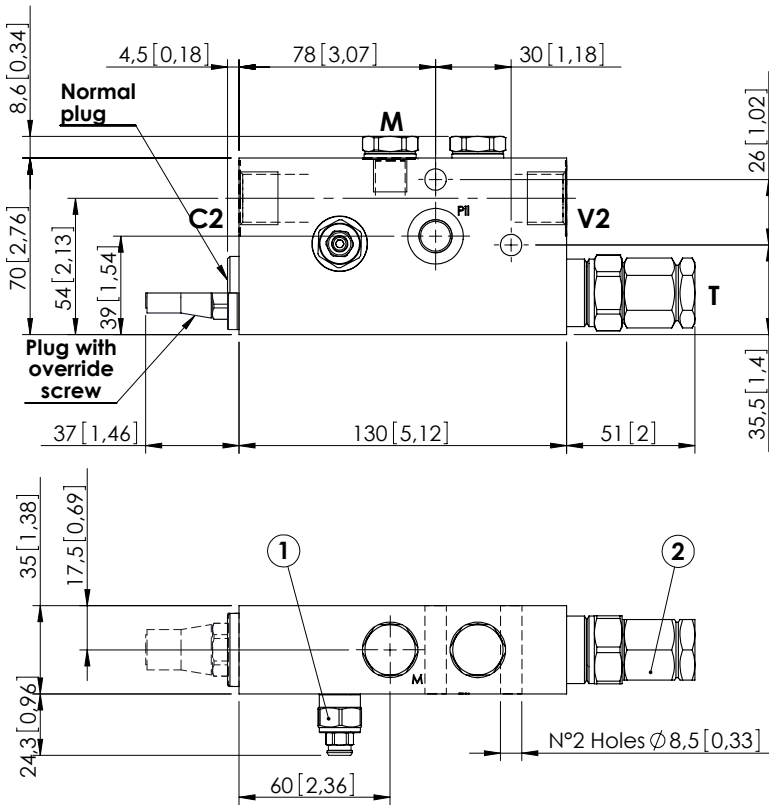


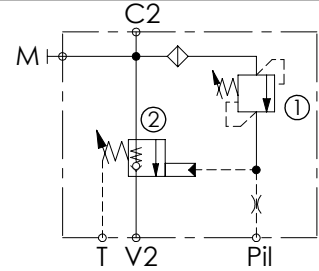
CHECK AND METERING VALVE

# MLST-100-ALGR

IN LINE VERSION  
RIGHT VERSION



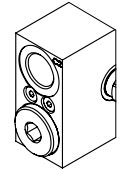
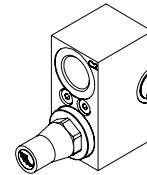
Dimensions: mm [inches]



## SPECIFICATIONS

Max. operating pressure:	420 bar (6000 psi)
Rated flow:	100 l/min (26 gpm)
Manifold:	Steel
Weight:	2,41 kg (5,27 lbs)
Contamination class to ISO 4406:	See technical spec.
MTF <sub>a</sub> :	150 - 1200 years: See technical spec.

## OPTIONS



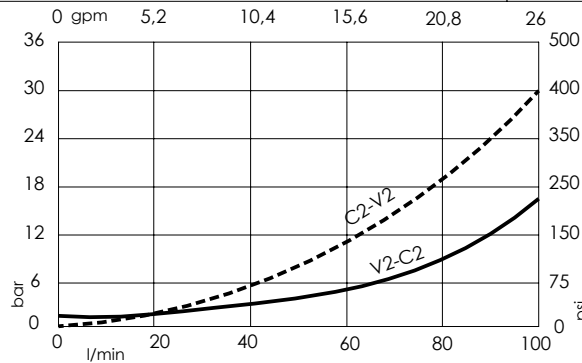
Plug with override screw

Normal plug

## NOTES

When correctly adjusted for the specific excavator installation, these valves meet the requirement of ISO 8643.  
For other configurations/quick codes not available in this catalogue page please consult factory

## CURVES



## ORDERING CODES

Quick code	Description	Main ports size	Plug with override screw	Standard setting	Adjustment range	Pressure increase
ML000134	MLST-100-ALGR-00-G12-N420	V2,C2: G 1/2" Pil, T, M: G 1/4"	No	① 350 bar @5 l/min (5000 psi @1,3 gpm) ② 7.5 bar (100 psi) Crack. pr.	① 150-420 bar (2100-6000 psi) ② 3-15 bar (50-200 psi)	① 236 bar/turn (3400 psi/turn) ② 7 bar/turn (100 psi/turn)
ML000147	MLST-100-ALGR-00-G12-E420	V2,C2: G 1/2" Pil, T, M: G 1/4"	Yes	① 350 bar @5 l/min (5000 psi @1,3 gpm) ② 7.5 bar (100 psi) Crack. pr.	① 150-420 bar (2100-6000 psi) ② 3-15 bar (50-200 psi)	① 236 bar/turn (3400 psi/turn) ② 7 bar/turn (100 psi/turn)
ML000135	MLST-100-ALGR-00-J12-N420	V2,C2: JIS 1/2" Pil, T, M: JIS 1/4"	No	① 350 bar @5 l/min (5000 psi @1,3 gpm) ② 7.5 bar (100 psi) Crack. pr.	① 150-420 bar (2100-6000 psi) ② 3-15 bar (50-200 psi)	① 236 bar/turn (3400 psi/turn) ② 7 bar/turn (100 psi/turn)
ML000148	MLST-100-ALGR-00-J12-E420	V2,C2: JIS 1/2" Pil, T, M: JIS 1/4"	Yes	① 350 bar @5 l/min (5000 psi @1,3 gpm) ② 7.5 bar (100 psi) Crack. pr.	① 150-420 bar (2100-6000 psi) ② 3-15 bar (50-200 psi)	① 236 bar/turn (3400 psi/turn) ② 7 bar/turn (100 psi/turn)