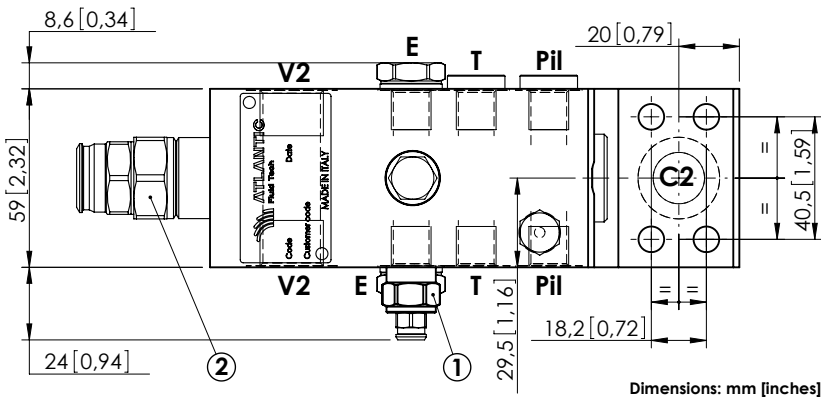
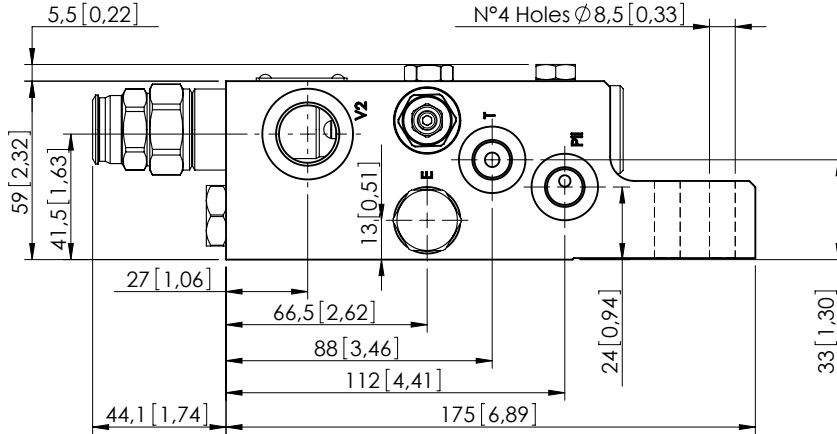


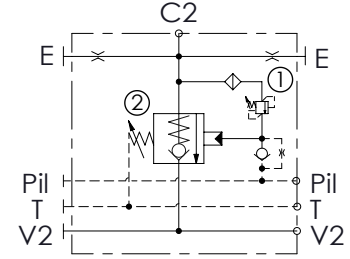
CHECK AND METERING VALVE

MLLT-100-AAGN

FLANGED TYPE
1/2" SAE 6000



Dimensions: mm [inches]



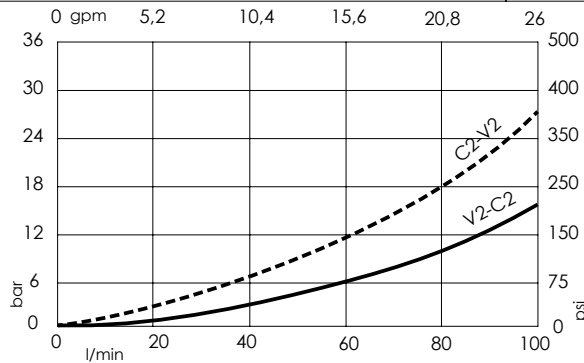
SPECIFICATIONS

Max. operating pressure:	420 bar (6000 psi)
Rated flow:	100 l/min (26 gpm)
Manifold:	Steel
Weight:	3.87 kg (8.53 lbs)
Contamination class to ISO 4406:	See technical spec.
MTF _a :	150 - 1200 years: See technical spec.

NOTES

When correctly adjusted for the specific excavator installation, these valves meet the requirement of ISO 8643.
For other configurations/quick codes not available in this catalogue page please consult factory

CURVES



ORDERING CODES

Quick code	Description	Main ports size	Standard setting	Adjustment range	Pressure increase
ML000130	MLLT-100-AAGN-00-S12-N420	C2: 1/2" SAE 6000 V2: G 1/2" E,Pil,T: G 1/4	① 350 bar @5 l/min (5000 psi @1.3 gpm) ② 7.5 bar (100 psi) Crack. pr.	① 150-420 bar (2100-6000 psi) ② 3-15 bar (50-200 psi)	① 236 bar/turn (3400 psi/turn) ② 6 bar/turn (85 psi/turn)