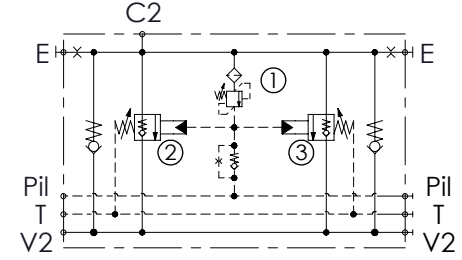
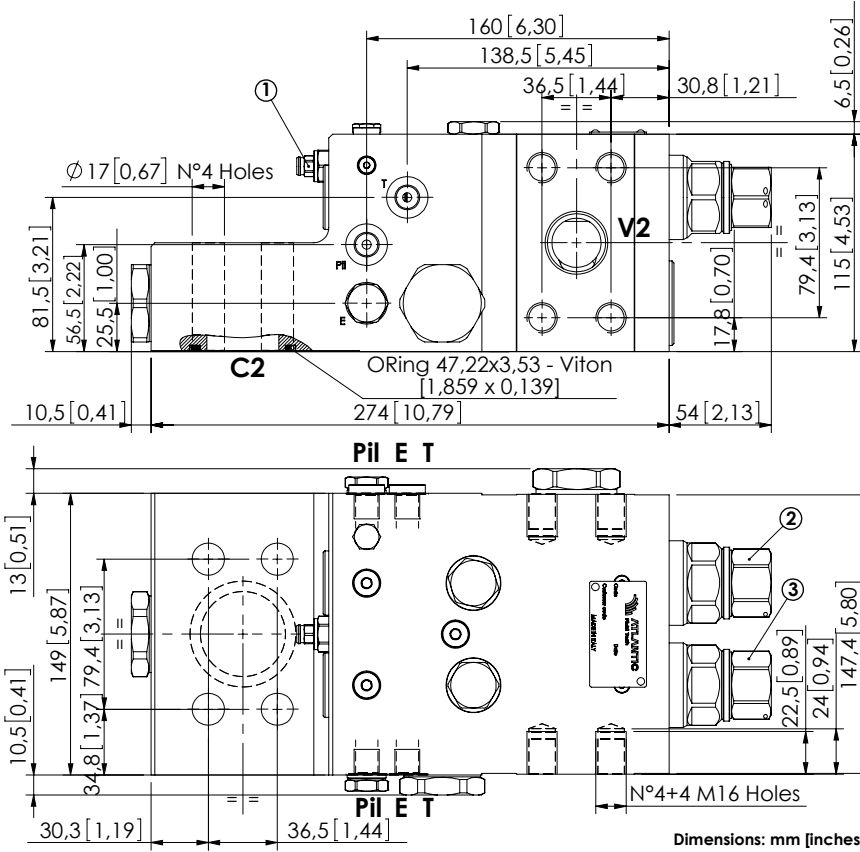


CHECK AND METERING VALVE

# MLST-700-AAGN

FLANGED TYPE  
1" 1/2 SAE 6000



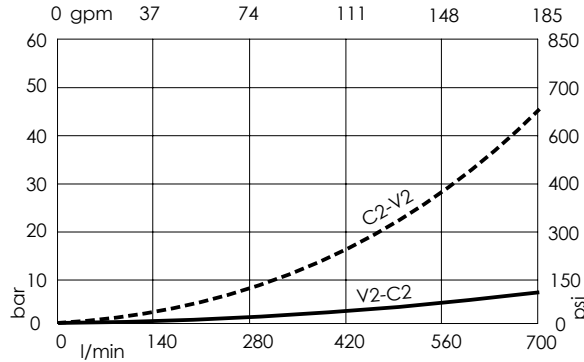
## SPECIFICATIONS

Max. operating pressure:	420 bar (6000 psi)
Rated flow:	700 l/min (185 gpm)
Manifold:	Steel
Weight:	27,27 kg(60,19 lbs)
Contamination class to ISO 4406:	See technical spec.
MTTFa:	150 - 1200 years: See technical spec.

## NOTES

When correctly adjusted for the specific excavator installation, these valves meet the requirement of ISO 8643.  
For other configurations/quick codes not available in this catalogue page please consult factory

## CURVES



## ORDERING CODES

Quick code	Description	Main ports size	Standard setting	Adjustment range	Pressure increase
ML000098	MLST-700-AAGN-00-S22-N420	V2,C2:1" 1/2 SAE 6000 E,Pil,T:G 1/4"	① 400 bar @5 l/min(5800 psi @1.3 gpm) ② 10.5 bar (150 psi) Crack. pr. ③ 7.5 bar (100 psi) Crack. pr.	① 150-420 bar (2100-6000 psi) ② ③ 3-15 bar (50-200 psi)	① 236 bar/turn (3400 psi/turn) ② ③ 3,4 bar/turn (50 psi/turn)
ML000094	MLST-700-AAJN-00-S22-N420	V2,C2:1" 1/2 SAE 6000 E,Pil,T:1/4" JIS	① 400 bar @5 l/min(5800 psi @1.3 gpm) ② 10.5 bar (150 psi) Crack. pr. ③ 7.5 bar (100 psi) Crack. pr.	① 150-420 bar (2100-6000 psi) ② ③ 3-15 bar (50-200 psi)	① 236 bar/turn (3400 psi/turn) ② ③ 3,4 bar/turn (50 psi/turn)