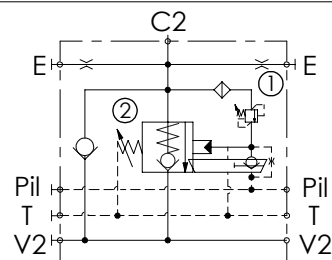
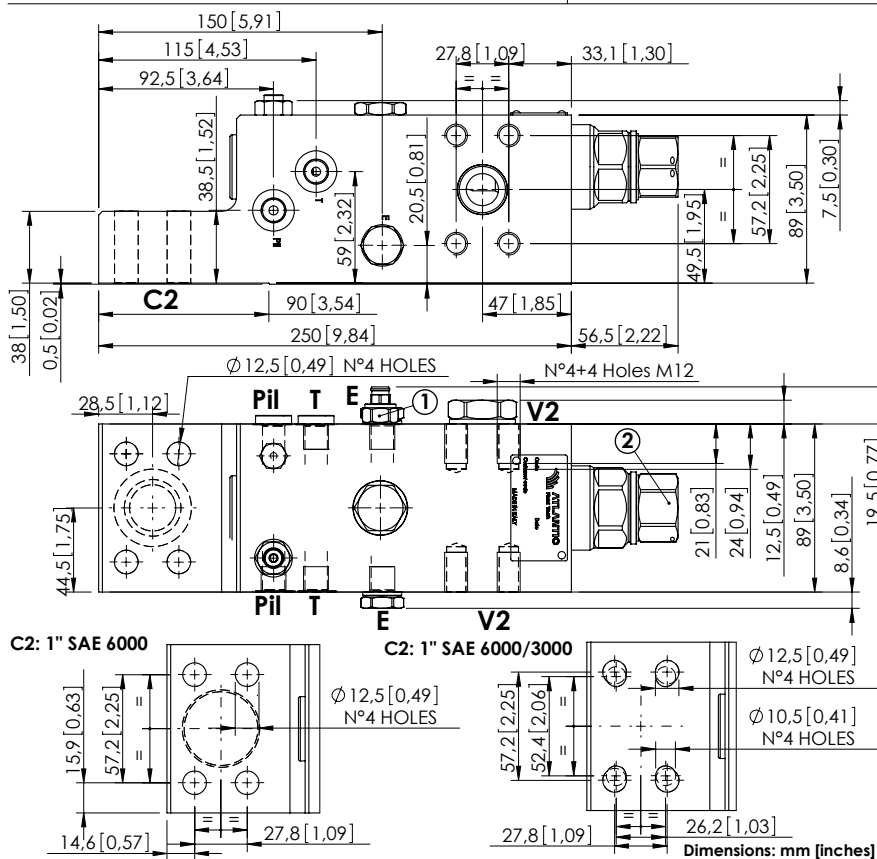


## CHECK AND METERING VALVE

## MLST-300-AAGN

FLANGED TYPE  
1" SAE 6000

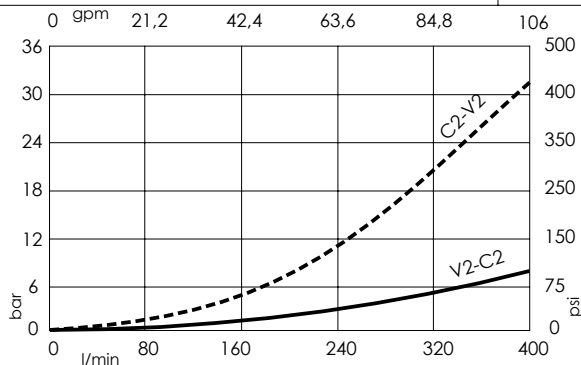
## SPECIFICATIONS

Max. operating pressure:	420 bar (6000 psi)
Rated flow:	400 l/min (106 gpm)
Manifold:	Steel
Weight:	12,14 kg (26,76 lbs)
Contamination class to ISO 4406:	See technical spec.
MTTFa:	150 years

## NOTES

When correctly adjusted for the specific excavator installation, these valves meet the requirement of ISO 8643.  
For other configurations/quick codes not available in this catalogue page please consult factory

## CURVES



## ORDERING CODES

Quick code	Description	Main ports size	Standard setting	Adjustment range	Pressure increase
ML000079	MLLT-300-AAGR-00-S10-N420	V2,C2: 1" SAE 6000 E,Pil,T: G 1/4"	① 350 bar @5 l/min (5000 psi @1,3 gpm) ② 7.5 bar (100 psi) Crack. pr.	① 150-420 bar (2100-6000 psi) ② 3-15 bar (50-200 psi)	① 236 bar/turn (3400 psi/turn) ② 3,4 bar/turn (50 psi/turn)
ML000080	MLLT-300-AAUR-00-S10-N420	V2,C2: 1" SAE 6000 E,Pil,T: 9/16-18 UNF-2B	① 350 bar @5 l/min (5000 psi @1,3 gpm) ② 7.5 bar (100 psi) Crack. pr.	① 150-420 bar (2100-6000 psi) ② 3-15 bar (50-200 psi)	① 236 bar/turn (3400 psi/turn) ② 3,4 bar/turn (50 psi/turn)
ML000081	MLLT-300-ASGR-00-S10-N420	V2: 1" SAE 6000 C2: 1" SAE 6000/3000 E, Pil, T: G 1/4"	① 350 bar @5 l/min (5000 psi @1,3 gpm) ② 7.5 bar (100 psi) Crack. pr.	① 150-420 bar (2100-6000 psi) ② 3-15 bar (50-200 psi)	① 236 bar/turn (3400 psi/turn) ② 3,4 bar/turn (50 psi/turn)
ML000177	MLLT-300-ASJR-00-S10-N420	V2,C2: 1" SAE 6000 E, Pil, T: JIS 1/4"	① 350 bar @5 l/min (5000 psi @1,3 gpm) ② 7.5 bar (100 psi) Crack. pr.	① 150-420 bar (2100-6000 psi) ② 3-15 bar (50-200 psi)	① 236 bar/turn (3400 psi/turn) ② 3,4 bar/turn (50 psi/turn)