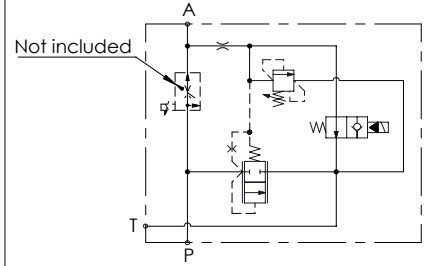
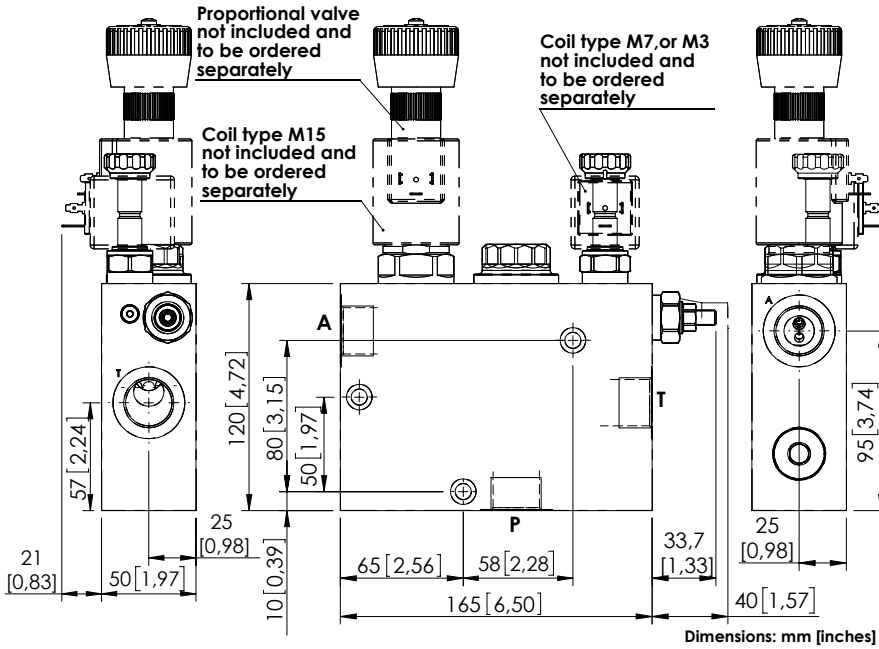
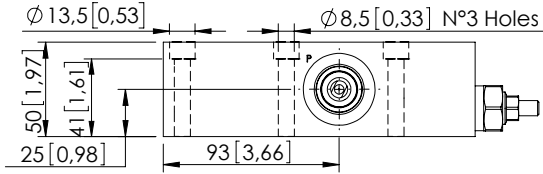


MFPC-200-MMAR

PROPORTIONAL VALVES
WITH UNLOADING
WITH RELIEF



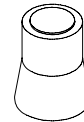
SPECIFICATIONS

Max. operating pressure:	320 bar (4600 psi)
Rated flow:	200 l/min (53 gpm)
Regulated flow:	0-80 l/min (0-21 gpm)
Manifold:	Steel
Weight:	6,73 kg (14,8 lbs)
Coil type:	M7 or M3 and M15 type
Cavity type:	SAE-16-3N
Contamination class to ISO 4406:	See technical spec.
MTTFd:	150 - 1200 years: See technical spec.

NOTES

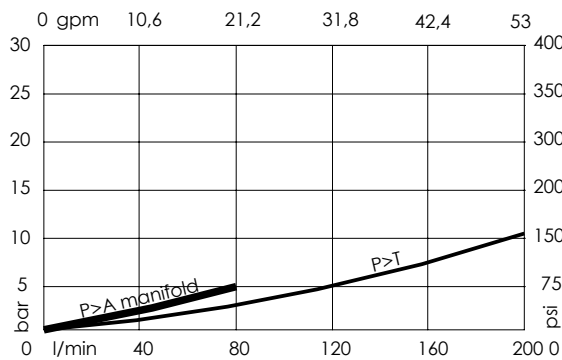
See chapter 21.00.000 for coils.
See chapter 16.00.000 for proportional valve info.
For other configurations/quick codes not available in this catalogue page please consult factory

SEALING CAP



Ordering code:
AT000020

CURVES



ORDERING CODES

Quick code	Description	Ports	Standard setting Q=5 l/min (1,3 gpm)	Adjustment range	Pressure increase
MF000352	MFPC-200-MMAR-80-G12-N320	P,T,R: G 3/4"	220 bar (3200 psi)	140-350 bar (2000-5000 psi)	142 bar/turn (2000 psi/turn)